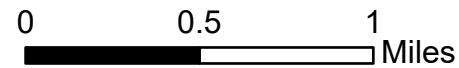


# Pilot Map

Saint Charles  
CO-PSF-001717  
10/29/2023

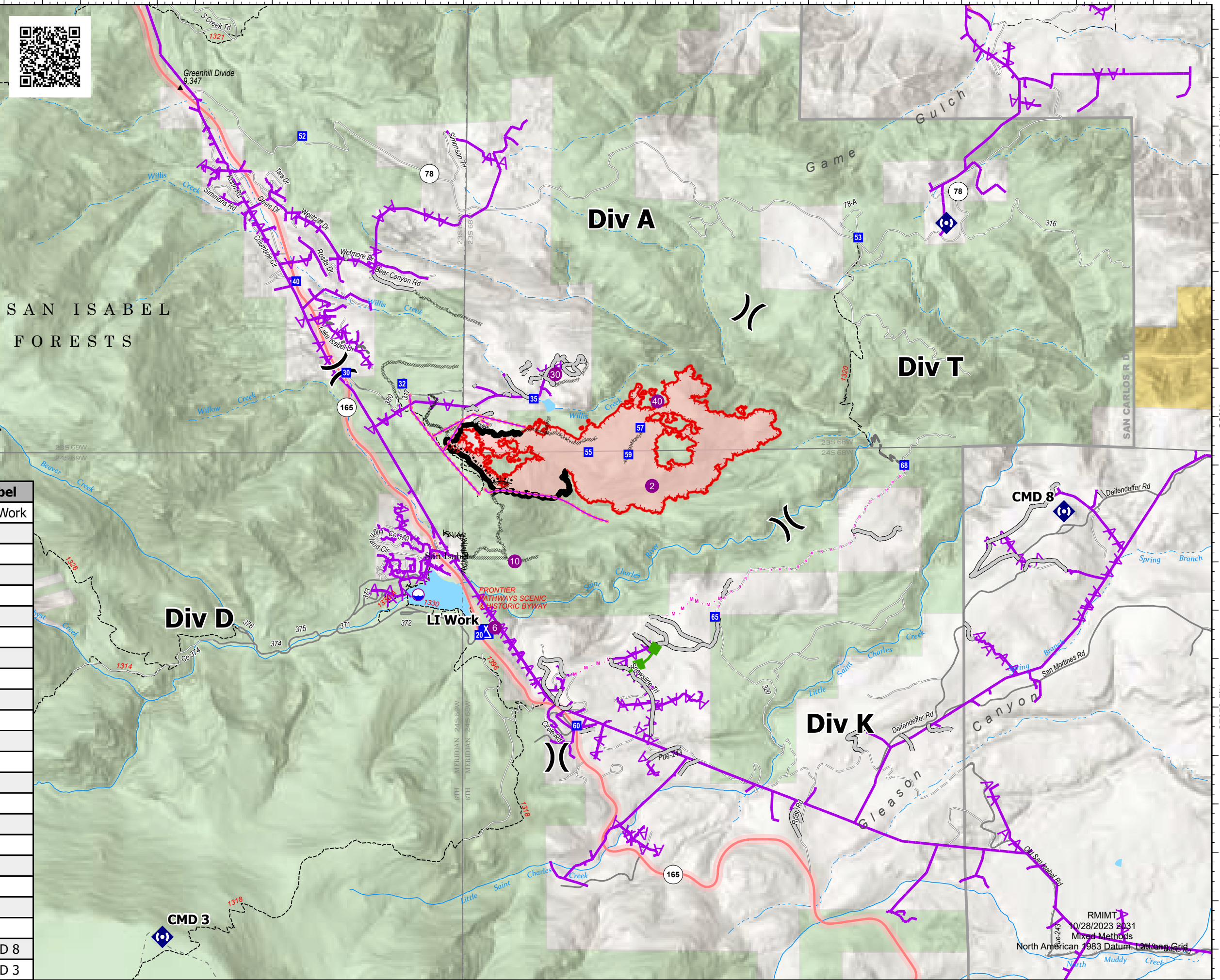


456 acres at 1800hrs 10/28/2023



- Dip Site
- Helispot
- Division Break
- Drop Point
- Camp
- Repeater
- Wildfire Daily Fire Perimeter
- Completed Burnout
- Completed Dozer Line
- Completed Fuel Break
- Planned Mixed Construction Line
- Planned Road as Line
- Access or Improved Road
- Other
- Escape Route
- Retardant Drop
- Contained
- Uncontained
- Bureau of Land Management
- US Forest Service
- Private
- Electric Transmission Lines

SAN ISABEL  
FORESTS



FC Point Type	Latitude	Longitude	Label
Camp	37° 58.890' N	105° 02.853' W	LI Work
Dip Site	37° 59.080' N	105° 03.295' W	
Drop Point	37° 58.873' N	105° 02.896' W	20
Drop Point	38° 00.226' N	105° 03.765' W	30
Drop Point	38° 00.169' N	105° 03.400' W	32
Drop Point	38° 01.448' N	105° 04.053' W	52
Drop Point	38° 00.093' N	105° 02.542' W	35
Drop Point	37° 58.404' N	105° 02.262' W	60
Drop Point	37° 58.967' N	105° 01.360' W	65
Drop Point	37° 59.751' N	105° 00.125' W	68
Drop Point	38° 00.926' N	105° 00.426' W	53
Drop Point	38° 00.698' N	105° 04.093' W	40
Drop Point	37° 59.817' N	105° 02.185' W	55
Drop Point	37° 59.805' N	105° 01.925' W	59
Drop Point	37° 59.943' N	105° 01.846' W	57
Helispot	37° 58.910' N	105° 02.795' W	6
Helispot	37° 59.642' N	105° 01.770' W	2
Helispot	38° 00.218' N	105° 02.402' W	30
Helispot	37° 59.252' N	105° 02.665' W	10
Helispot	38° 00.079' N	105° 01.736' W	40
Repeater	38° 01.000' N	104° 59.851' W	
Repeater	37° 59.511' N	104° 59.084' W	CMD 8
Repeater	37° 57.312' N	105° 04.962' W	CMD 3

RMIMT  
10/28/2023 2031  
Mixed Methods  
North American 1983 Datum, Lot Long Grid