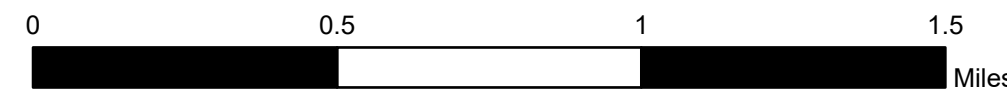
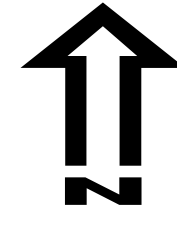




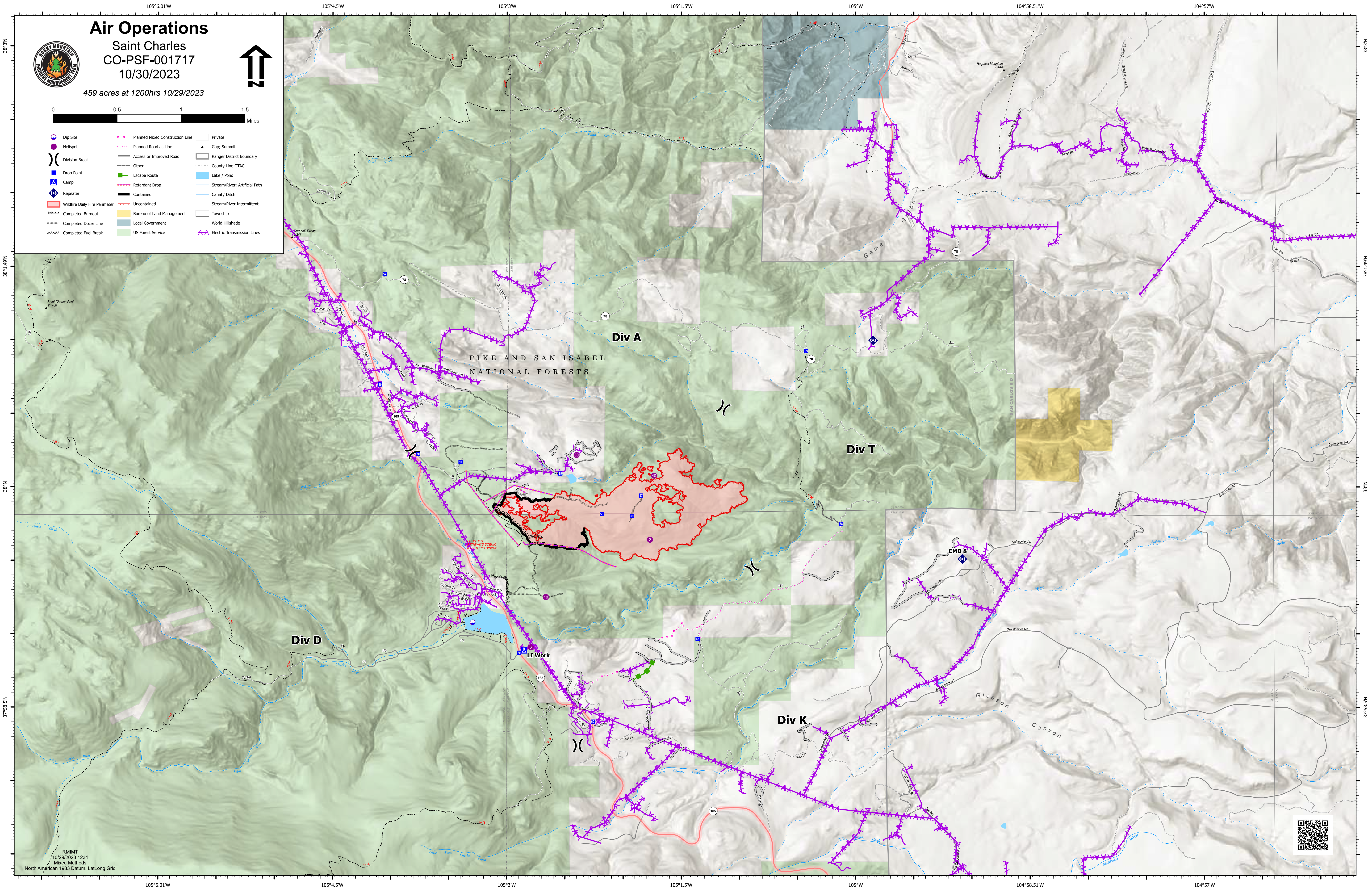
# Air Operations

Saint Charles  
CO-PSF-001717  
10/30/2023

459 acres at 1200hrs 10/29/2023



- |  |  |  |
|--|--|--|
|  |  |  |
|  |  |  |
|  |  |  |
|  |  |  |
|  |  |  |
|  |  |  |
|  |  |  |
|  |  |  |
|  |  |  |
|  |  |  |
|  |  |  |



Div D

Div A

Div T

Div K

PIKE AND SAN ISABEL  
NATIONAL FORESTS

CMD 8

LI Work

Gleason  
Canyon

