

Logistical Locations Map Index

Potential Sites (Logistics)

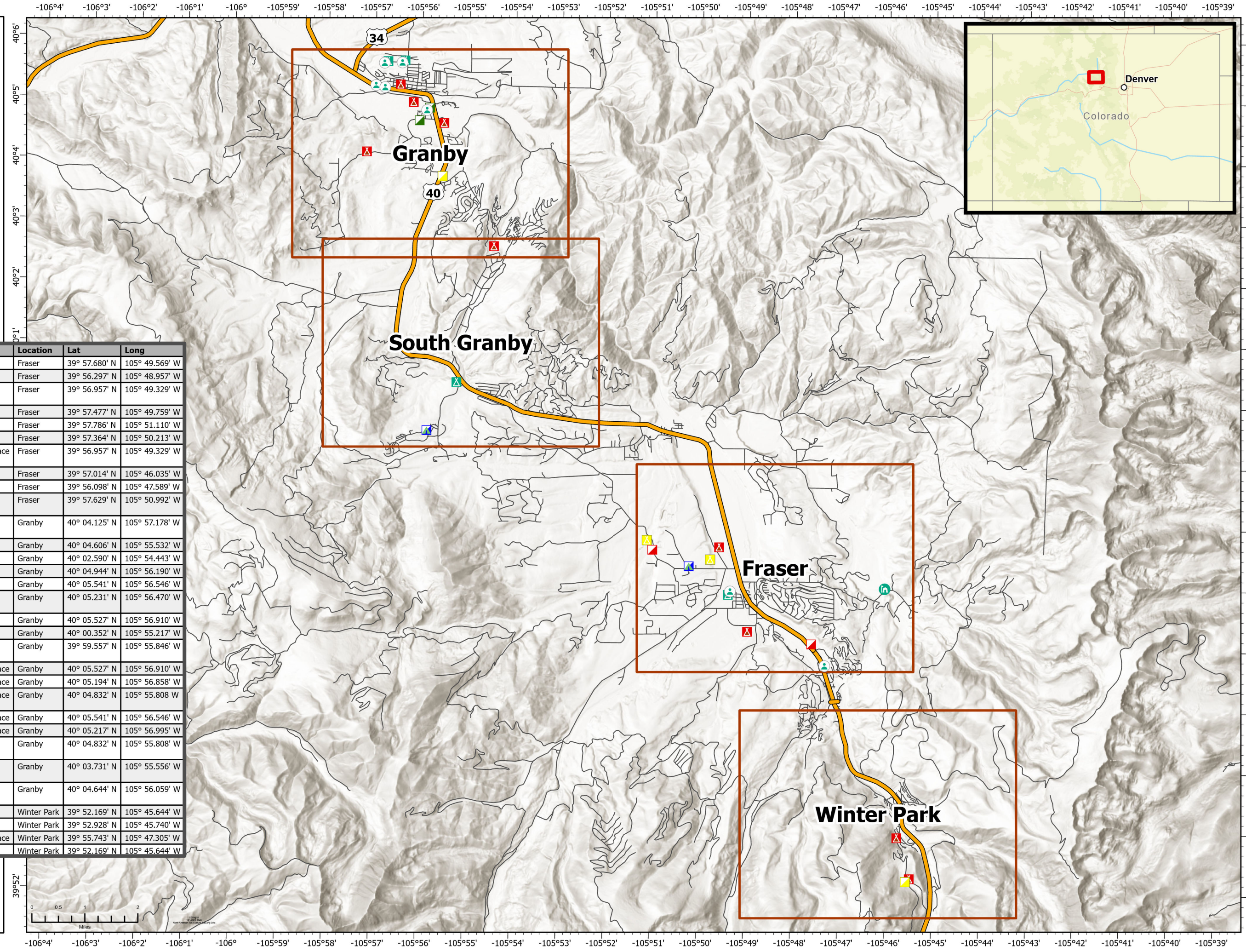
Type - Suitability

-  Camp - Suitable
-  Camp - Marginal
-  Camp - Not Suitable
-  Camp/ICP - Suitable
-  Cooperators Meeting Place - Suitable
-  FOB - Suitable
-  ICP - Suitable
-  ICP - Marginal
-  ICP - Not Suitable



SiteName	Type	Location	Lat	Long
Denver Water Board Property	Camp	Fraser	39° 57.680' N	105° 49.569' W
Fraser Tubing Hill	Camp	Fraser	39° 56.297' N	105° 48.957' W
Fraser Valley Elementary School	Camp	Fraser	39° 56.957' N	105° 49.329' W
Fraser Valley Sports Complex	Camp	Fraser	39° 57.477' N	105° 49.759' W
Murphy Ranches	Camp	Fraser	39° 57.786' N	105° 51.110' W
Dashing Thru the Snow	Camp/ICP	Fraser	39° 57.364' N	105° 50.213' W
Fraser Valley Elementary School	Cooperators Meeting Place	Fraser	39° 56.957' N	105° 49.329' W
Devil's Thumb Ranch Property	FOB	Fraser	39° 57.014' N	105° 46.035' W
East Grand Fire HQ	ICP	Fraser	39° 56.098' N	105° 47.589' W
Grand County EOC/SAR/Road and Bridge Building	ICP	Fraser	39° 57.629' N	105° 50.992' W
BLM Property (West of Sulphur District Office)	Camp	Granby	40° 04.125' N	105° 57.178' W
Granby Ranch Property	Camp	Granby	40° 04.606' N	105° 55.532' W
Granby Ranch Ski Area	Camp	Granby	40° 02.590' N	105° 54.443' W
Kaibab Park Ballfields	Camp	Granby	40° 04.944' N	105° 56.190' W
Middle Park High School	Camp	Granby	40° 05.541' N	105° 56.546' W
Polhamus Park/Little League Field	Camp	Granby	40° 05.231' N	105° 56.470' W
East Grand Middle School	Camp	Granby	40° 05.527' N	105° 56.910' W
Red Dirt Fire Station	Camp	Granby	40° 00.352' N	105° 55.217' W
Snow Mountain Ranch (YMCA of the Rockies)	Camp/ICP	Granby	39° 59.557' N	105° 55.846' W
East Grand Middle School	Cooperators Meeting Place	Granby	40° 05.527' N	105° 56.910' W
Grand County Library	Cooperators Meeting Place	Granby	40° 05.194' N	105° 56.858' W
Grand Fire Protection District #1 Station Training Room	Cooperators Meeting Place	Granby	40° 04.832' N	105° 55.808' W
Middle Park High School	Cooperators Meeting Place	Granby	40° 05.541' N	105° 56.546' W
Mountain Parks Electric	Cooperators Meeting Place	Granby	40° 05.217' N	105° 56.995' W
Grand Fire Protection District #1 Station	ICP	Granby	40° 04.832' N	105° 55.808' W
Inn at Silver Creek Conference Facility	ICP	Granby	40° 03.731' N	105° 55.556' W
USFS Sulphur Range District Office	ICP	Granby	40° 04.644' N	105° 56.059' W
Mary Jane Ski Area	Camp	Winter Park	39° 52.169' N	105° 45.644' W
Winter Park Ski Area	Camp	Winter Park	39° 52.928' N	105° 45.740' W
Headwaters Center	Cooperators Meeting Place	Winter Park	39° 55.743' N	105° 47.305' W
Mary Jane Ski Area	ICP	Winter Park	39° 52.169' N	105° 45.644' W






*Sites identified during the 2023 Devil's Thumb Fire for future incident use. Identified by John A. Bohn (LOFR)



Logistical Locations Granby

Potential Sites (Logistics)

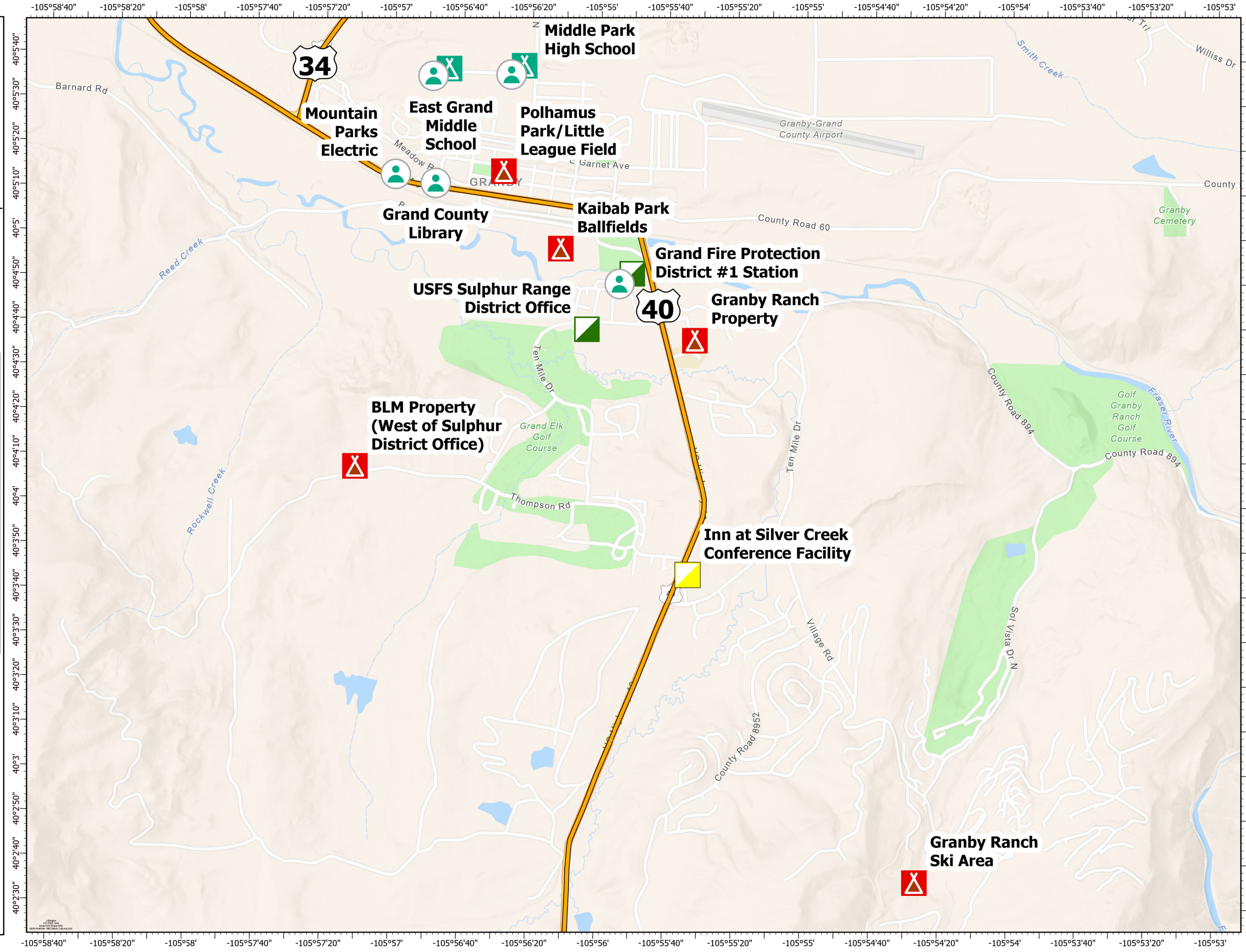
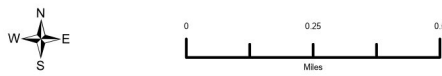
Type - Suitability

-  Camp - Suitable
-  Camp - Not Suitable
-  Cooperators Meeting Place Suitable
-  ICP - Suitable
-  ICP - Marginal

SiteName	Comments
Middle Park High School	Best for CIMT
East Grand Middle School	
BLM Property (West of Sulphur District Office)	Off of Ten Mile Drive - too hilly with no parking
Granby Ranch Property	Near Medical Center. Not suitable due to road noise, public view, and train noise.
Granby Ranch Ski Area	Not suitable due to long drive through residential area and limited level camping area.
Polhamus Park/Little League Field	Not suitable due to being in the center of town, limited off-street parking, and public view.
Kaibab Park Ballfields	Not suitable due to public view and next to train tracks.
Grand Fire Protection District #1 Station	Room for CIMT and separate board room plus other fire amenities - used for 2023 Devil's Thumb 2nd ICP.
USFS Sulphur Range District Office	Suitable for a small Type 3 team - limited technology for anyone who is not a USDA employee.
Inn at Silver Creek Conference Facility	Would be expensive, public facing, property is very run down and they are booked for many events through fall.
Mountain Parks Electric	
Grand County Library	
Grand Fire Protection District #1 Station Training Room	If not being used as ICP
Middle Park High School	
East Grand Middle School	

SiteName	Lat	Long
Middle Park High School	40° 05.541' N	105° 56.546' W
East Grand Middle School	40° 05.527' N	105° 56.910' W
BLM Property (West of Sulphur District Office)	40° 04.125' N	105° 57.178' W
Granby Ranch Property	40° 04.606' N	105° 55.532' W
Granby Ranch Ski Area	40° 02.590' N	105° 54.443' W
Polhamus Park/Little League Field	40° 05.231' N	105° 56.478' W
Kaibab Park Ballfields	40° 04.944' N	105° 56.190' W
Grand Fire Protection District #1 Station	40° 04.832' N	105° 55.808' W
USFS Sulphur Range District Office	40° 04.644' N	105° 56.059' W
Inn at Silver Creek Conference Facility	40° 03.731' N	105° 55.556' W
Mountain Parks Electric	40° 05.217' N	105° 56.995' W
Grand County Library	40° 05.194' N	105° 56.858' W
Grand Fire Protection District #1 Station Training Room	40° 04.832' N	105° 55.808' W
Middle Park High School	40° 05.541' N	105° 56.546' W
East Grand Middle School	40° 05.527' N	105° 56.910' W




*Sites identified during the 2023 Devil's Thumb Fire for future incident use. Identified by John A. Bohn (LOFR)



Logistical Locations South Granby

Potential Sites (Logistics)

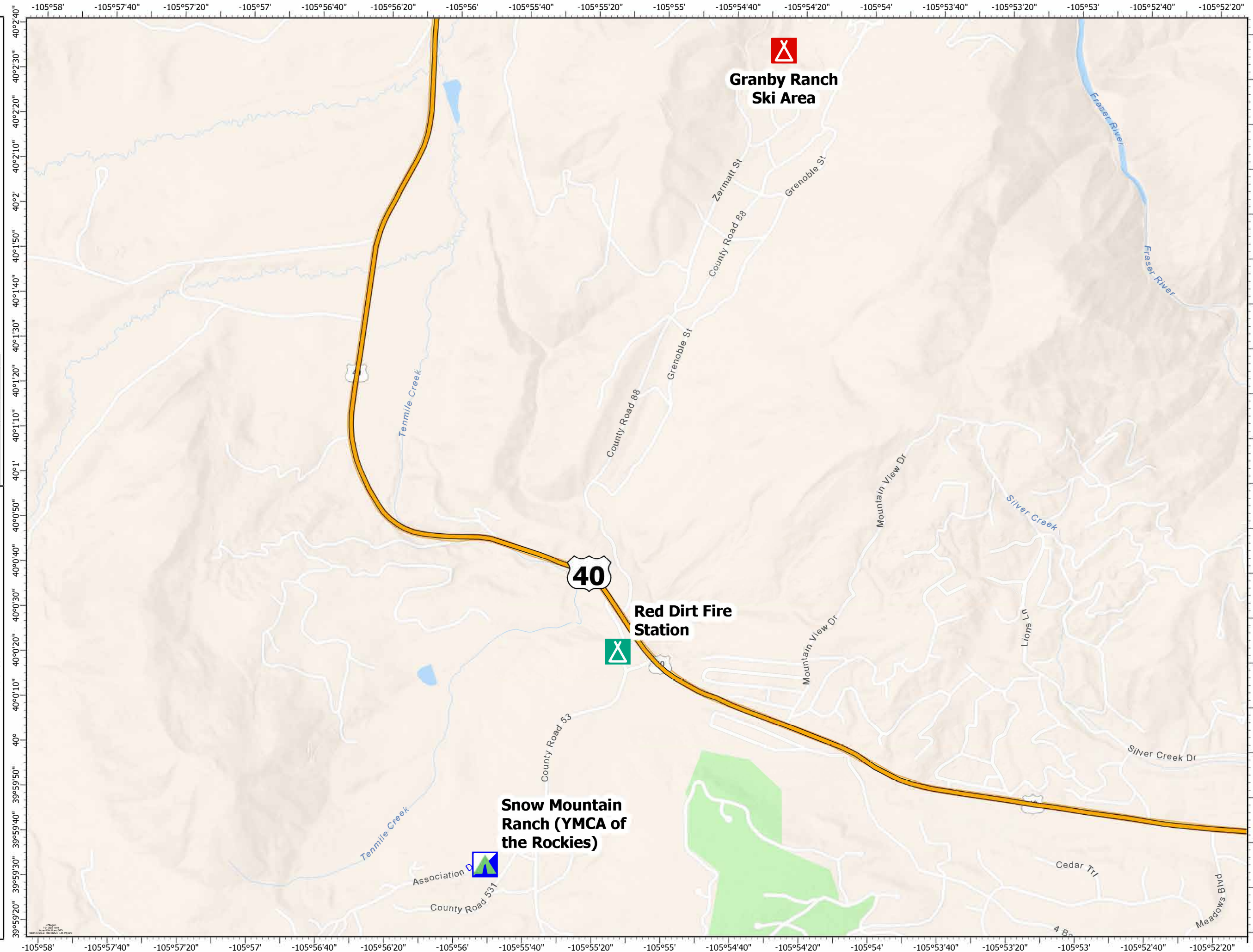
Type - Suitability

-  Camp - Suitable
-  Camp - Not Suitable
-  Camp/ICP - Suitable

SiteName	Comments
Red Dirt Fire Station	For both Grand and East Grand FPD; out of public view but road noise is high. Up to 100 - used for 2023 Devil's Thumb Camp 2.
Granby Ranch Ski Area	Not suitable due to long drive through residential area and limited level camping area.
Snow Mountain Ranch (YMCA of the Rockies)	Used in 2020 by many crews - generally booked for the summer - they might be amenable to camping later in the season (they allowed us to intrude on their land that abuts the Red Dirt Station) but only in large open areas; public facing view (ranch guests)

SiteName	Lat	Long
Red Dirt Fire Station	40° 00.352' N	105° 55.217' W
Granby Ranch Ski Area	40° 02.590' N	105° 54.443' W
Snow Mountain Ranch (YMCA of the Rockies)	39° 59.557' N	105° 55.846' W

*Sites identified during the 2023 Devil's Thumb Fire for future incident use. Identified by John A. Bohn (LOFR)



Logistical Locations Fraser

Potential Sites (Logistics)

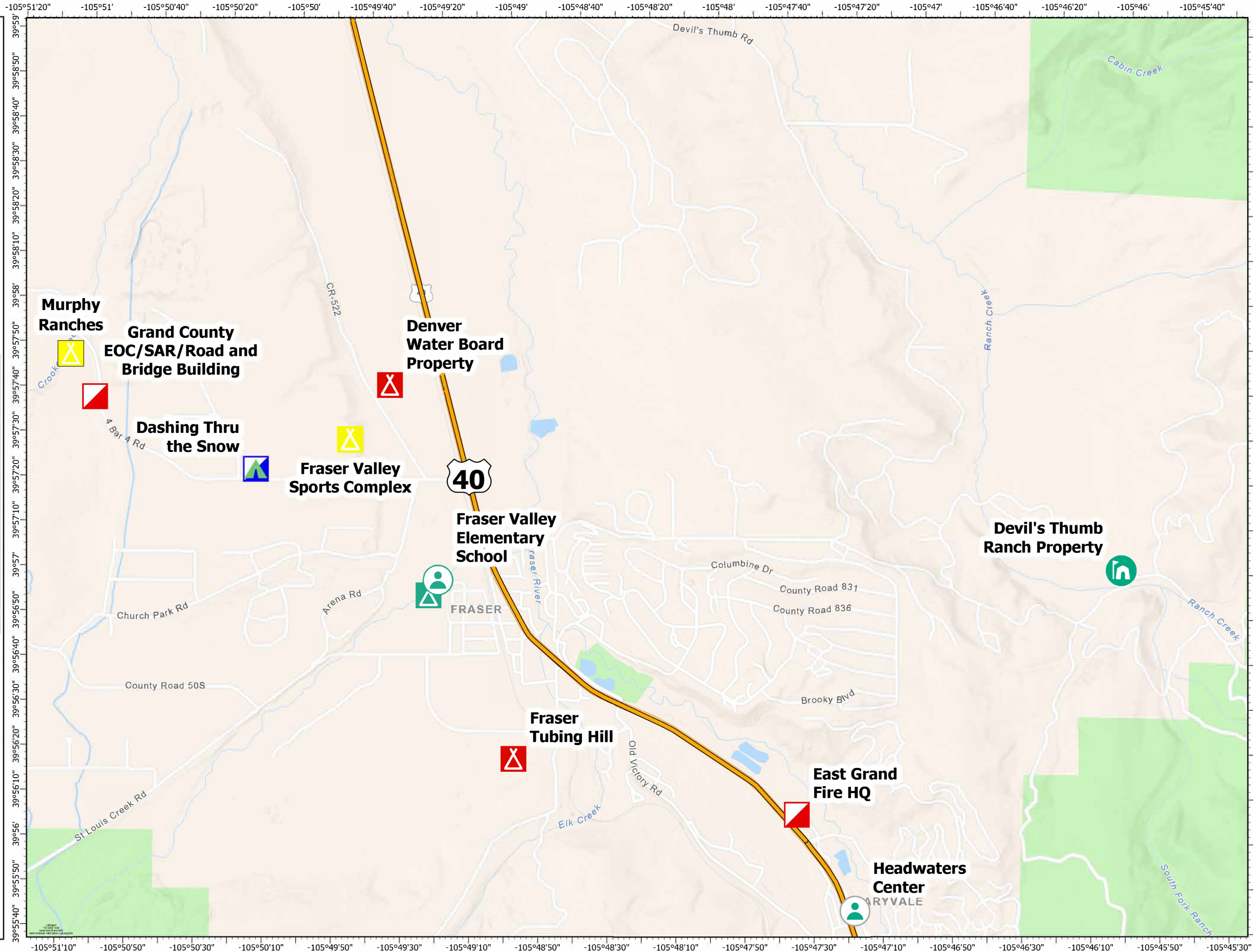
Type - Suitability

-  Camp - Suitable
-  Camp - Marginal
-  Camp - Not Suitable
-  Camp/ICP - Suitable
-  Cooperators Meeting Place - Suitable
-  FOB - Suitable
-  ICP - Not Suitable

SiteName	Comments
Fraser Valley Elementary School	
Dashing Thru the Snow	Mostly out of public view, large open space, suitable for 250 with full support using yurts. Owned by Denver Water. Used for 2023 Devil's Thumb Fire. Cell tower next door.
Fraser Valley Sports Complex	Train noise, public use and view, the need to water the fields makes this a poor site. Used for 2023 Devil's Camp 1.
Murphy Ranches	Marginal area due to lack of level ground and entrance on a corner near gravel pit and concrete plant
Denver Water Board Property	North of Fraser Sports Complex. Not suitable due to road noise, train noise, public view, and potentially wet ground.
Fraser Tubing Hill	Not suitable due to train noise and public view.
Devil's Thumb Ranch Property	Ranch owner likely would not charge; very nice meadow.
East Grand Fire HQ	Not suitable as their training room is used often for the FD and community events.
Grand County EOC/SAR/Road and Bridge Building	Not suitable because in the event of major fire growth, they would need their facility for emergency purposes and team would be out at the worst possible time.
Headwaters Center	
Fraser Valley Elementary School	

SiteName	Lat	Long
Fraser Valley Elementary School	39° 56.957' N	105° 49.329' W
Dashing Thru the Snow	39° 57.364' N	105° 50.213' W
Fraser Valley Sports Complex	39° 57.477' N	105° 49.759' W
Murphy Ranches	39° 57.786' N	105° 51.110' W
Denver Water Board Property	39° 57.680' N	105° 49.569' W
Fraser Tubing Hill	39° 56.297' N	105° 48.957' W
Devil's Thumb Ranch Property	39° 57.014' N	105° 46.035' W
East Grand Fire HQ	39° 56.098' N	105° 47.589' W
Grand County EOC/SAR/Road and Bridge Building	39° 57.629' N	105° 50.992' W
Headwaters Center	39° 55.743' N	105° 47.305' W
Fraser Valley Elementary School	39° 56.957' N	105° 49.329' W


*Sites identified during the 2023 Devil's Thumb Fire for future incident use. Identified by John A. Bohn (LOFR)



Logistical Locations Winter Park

Potential Sites (Logistics)

Type - Suitability

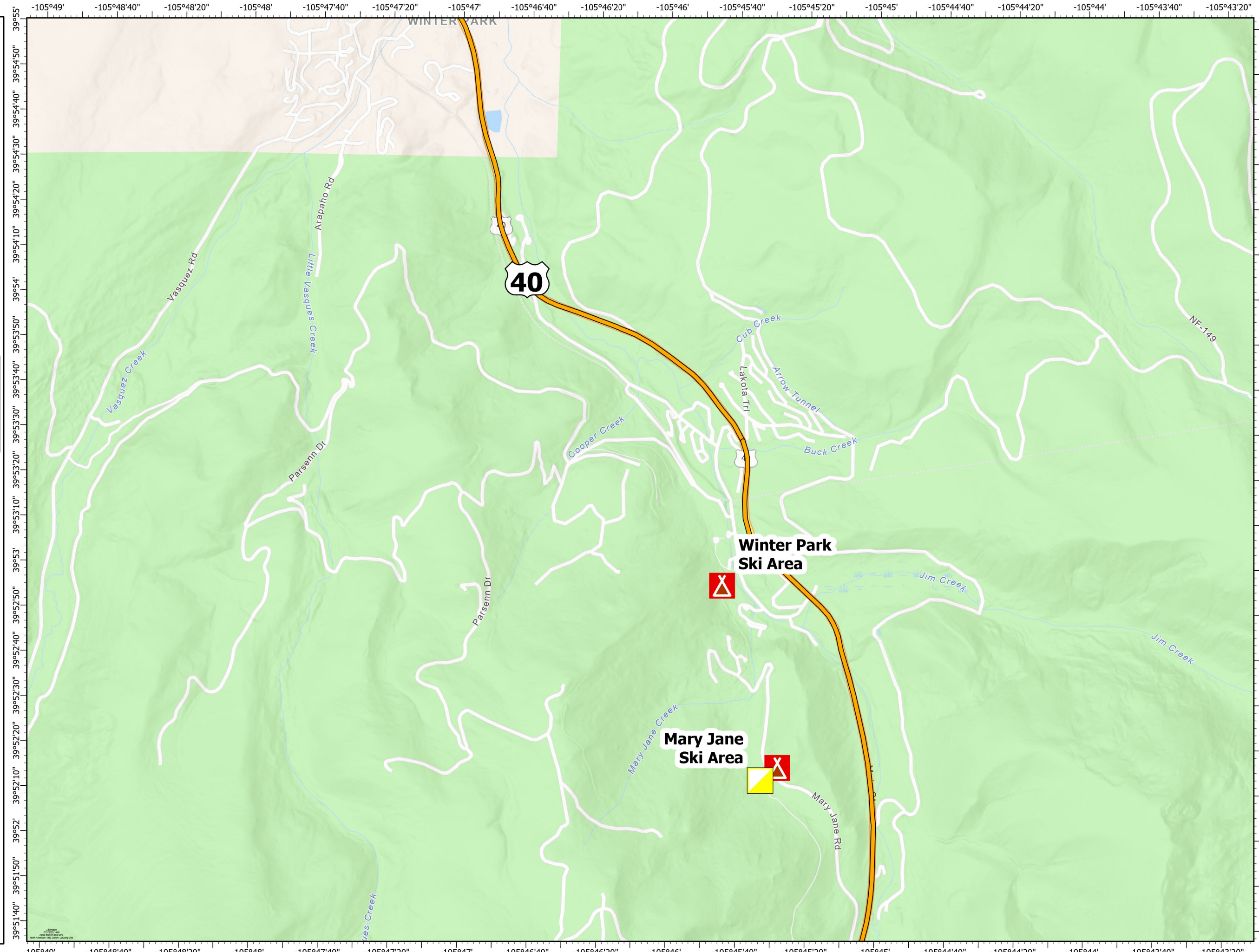
 Camp - Not Suitable

 ICP - Marginal

SiteName	Comments
Winter Park Ski Area	Not suitable as the resort is open year round for various activities.
Mary Jane Ski Area	Very large paved parking lot but not suitable for camping due to lack of level ground and the need to drive through 2 congested tourist towns everyday.
Mary Jane Ski Area	Very large paved parking lot - would necessitate driving through 2 congested tourist towns everyday.

SiteName	Lat	Long
Winter Park Ski Area	39° 52.928' N	105° 45.740' W
Mary Jane Ski Area	39° 52.169' N	105° 45.644' W
Mary Jane Ski Area	39° 52.169' N	105° 45.644' W

*Sites identified during the 2023 Devil's Thumb Fire for future incident use. Identified by John A. Bohn (LOFR)



SiteName	Type	Location	Suitability	Comments	Lat	Long
Denver Water Board Property	Camp	Fraser	Not Suitable	North of Fraser Sports Complex. Not suitable due to road noise, train noise, public view, and potentially wet ground.	39° 57.680' N	105° 49.569' W
Fraser Tubing Hill	Camp	Fraser	Not Suitable	Not suitable due to train noise and public view.	39° 56.297' N	105° 48.957' W
Fraser Valley Elementary School	Camp	Fraser	Suitable		39° 56.957' N	105° 49.329' W
Fraser Valley Sports Complex	Camp	Fraser	Marginal	Train noise, public use and view, the need to water the fields makes this a poor site. Used for 2023 Devil's Camp 1.	39° 57.477' N	105° 49.759' W
Murphy Ranches	Camp	Fraser	Marginal	Marginal area due to lack of level ground and entrance on a corner near gravel pit and concrete plant	39° 57.786' N	105° 51.110' W
Dashing Thru the Snow	Camp/ICP	Fraser	Suitable	Mostly out of public view, large open space, suitable for 250 with full support using yurts. Owned by Denver Water. Used for 2023 Devil's Thumb Fire. Cell tower next door.	39° 57.364' N	105° 50.213' W
Fraser Valley Elementary School	Cooperators Meeting Place	Fraser	Suitable		39° 56.957' N	105° 49.329' W
Devil's Thumb Ranch Property	FOB	Fraser	Suitable	Ranch owner likely would not charge; very nice meadow.	39° 57.014' N	105° 46.035' W
East Grand Fire HQ	ICP	Fraser	Not Suitable	Not suitable as their training room is used often for the FD and community events.	39° 56.098' N	105° 47.589' W
Grand County EOC/SAR/Road and Bridge Building	ICP	Fraser	Not Suitable	Not suitable because in the event of major fire growth, they would need their facility for emergency purposes and team would be out at the worst possible time.	39° 57.629' N	105° 50.992' W
BLM Property (West of Sulphur District Office)	Camp	Granby	Not Suitable	Off of Ten Mile Drive - too hilly with no parking	40° 04.125' N	105° 57.178' W
Granby Ranch Property	Camp	Granby	Not Suitable	Near Medical Center. Not suitable due to road noise, public view, and train noise.	40° 04.606' N	105° 55.532' W
Granby Ranch Ski Area	Camp	Granby	Not Suitable	Not suitable due to long drive through residential area and limited level camping area.	40° 02.590' N	105° 54.443' W
Kaibab Park Ballfields	Camp	Granby	Not Suitable	Not suitable due to public view and next to train tracks.	40° 04.944' N	105° 56.190' W
Middle Park High School	Camp	Granby	Suitable	Best for CIMT	40° 05.541' N	105° 56.546' W
Polhamus Park/Little League Field	Camp	Granby	Not Suitable	Not suitable due to being in the center of town, limited off-street parking, and public view.	40° 05.231' N	105° 56.470' W
East Grand Middle School	Camp	Granby	Suitable		40° 05.527' N	105° 56.910' W
Red Dirt Fire Station	Camp	Granby	Suitable	For both Grand and East Grand FPD; out of public view but road noise is high. Up to 100 - used for 2023 Devil's Thumb Camp 2.	40° 00.352' N	105° 55.217' W
Snow Mountain Ranch (YMCA of the Rockies)	Camp/ICP	Granby	Suitable	Used in 2020 by many crews - generally booked for the summer - they might be amenable to camping later in the season (they allowed us to intrude on their land that abuts the Red Dirt Station) but only in large open areas; public facing view (ranch guests)	39° 59.557' N	105° 55.846' W
East Grand Middle School	Cooperators Meeting Place	Granby	Suitable		40° 05.527' N	105° 56.910' W
Grand County Library	Cooperators Meeting Place	Granby	Suitable		40° 05.194' N	105° 56.858' W
Grand Fire Protection District #1 Station Training Room	Cooperators Meeting Place	Granby	Suitable	If not being used as ICP	40° 04.832' N	105° 55.808' W
Middle Park High School	Cooperators Meeting Place	Granby	Suitable		40° 05.541' N	105° 56.546' W
Mountain Parks Electric	Cooperators Meeting Place	Granby	Suitable		40° 05.217' N	105° 56.995' W
Grand Fire Protection District #1 Station	ICP	Granby	Suitable	Room for CIMT and separate board room plus other fire amenities - used for 2023 Devil's Thumb 2nd ICP.	40° 04.832' N	105° 55.808' W
Inn at Silver Creek Conference Facility	ICP	Granby	Marginal	Would be expensive, public facing, property is very run down and they are booked for many events through fall.	40° 03.731' N	105° 55.556' W
USFS Sulphur Range District Office	ICP	Granby	Suitable	Suitable for a small Type 3 team - limited technology for anyone who is not a USDA employee.	40° 04.644' N	105° 56.059' W
Mary Jane Ski Area	Camp	Winter Park	Not Suitable	Very large paved parking lot but not suitable for camping due to lack of level ground and the need to drive through 2 congested tourist towns everyday.	39° 52.169' N	105° 45.644' W
Winter Park Ski Area	Camp	Winter Park	Not Suitable	Not suitable as the resort is open year round for various activities.	39° 52.928' N	105° 45.740' W
Headwaters Center	Cooperators Meeting Place	Winter Park	Suitable		39° 55.743' N	105° 47.305' W
Mary Jane Ski Area	ICP	Winter Park	Marginal	Very large paved parking lot - would necessitate driving through 2 congested tourist towns everyday.	39° 52.169' N	105° 45.644' W