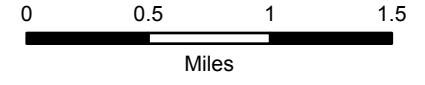


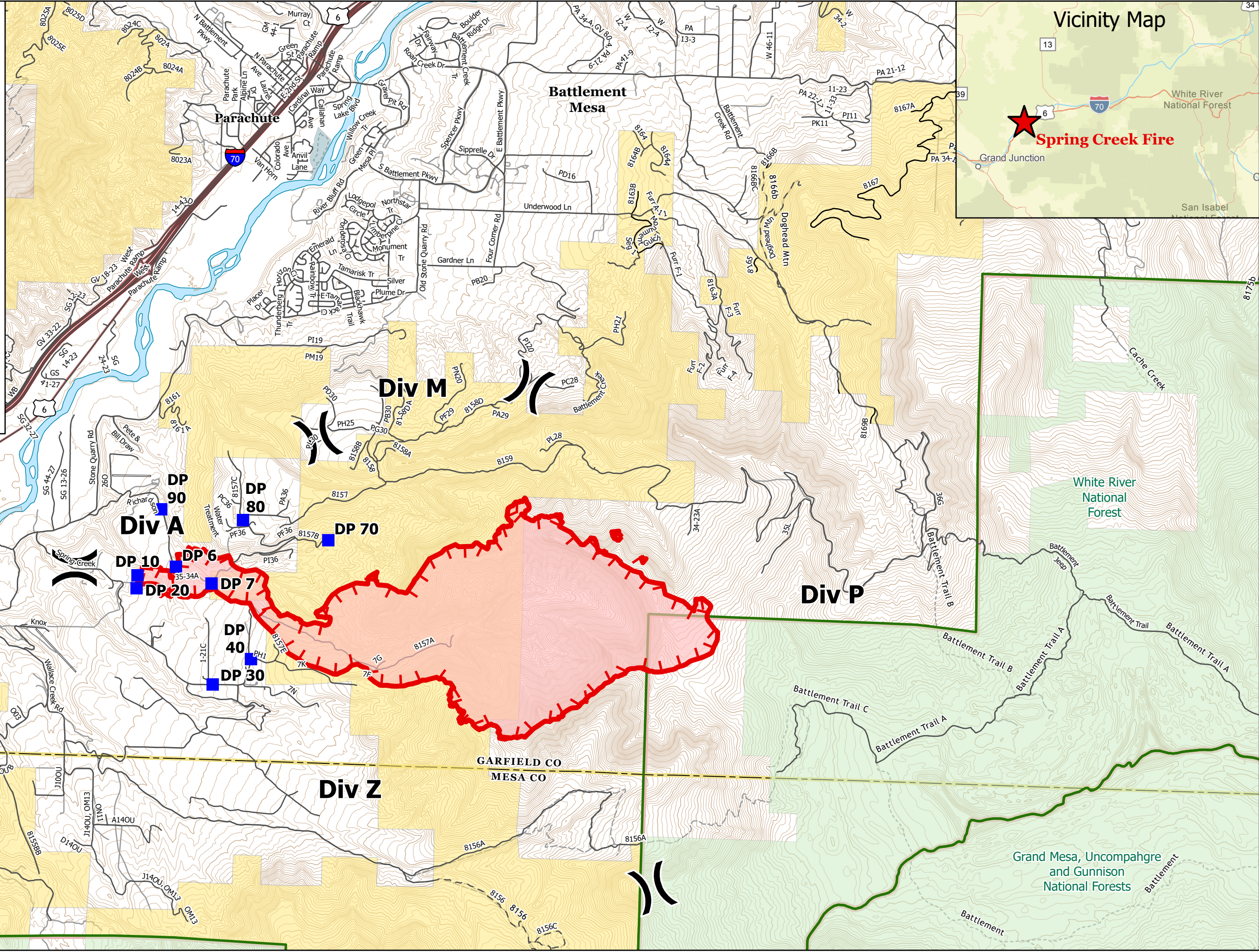
Transportation

Spring Creek
CO-GFX-230097
06/28/2023

2848 acres at 06/27/2023 1338 hrs



- () Division Break
- Drop Point
- Unknown Road Type
- - Trails
- Open to full-size vehicles
- ▭ Uncontained
- ▭ Wildfire Daily Fire Perimeter
- ▭ Bureau of Land Management
- ▭ State, County, City: Recreation Areas
- ▭ Private
- ▭ US Forest Service
- ▭ Administrative Forest



6/27/2023 2105
Acres from MMA
North American 1983 Datum