

Briefing

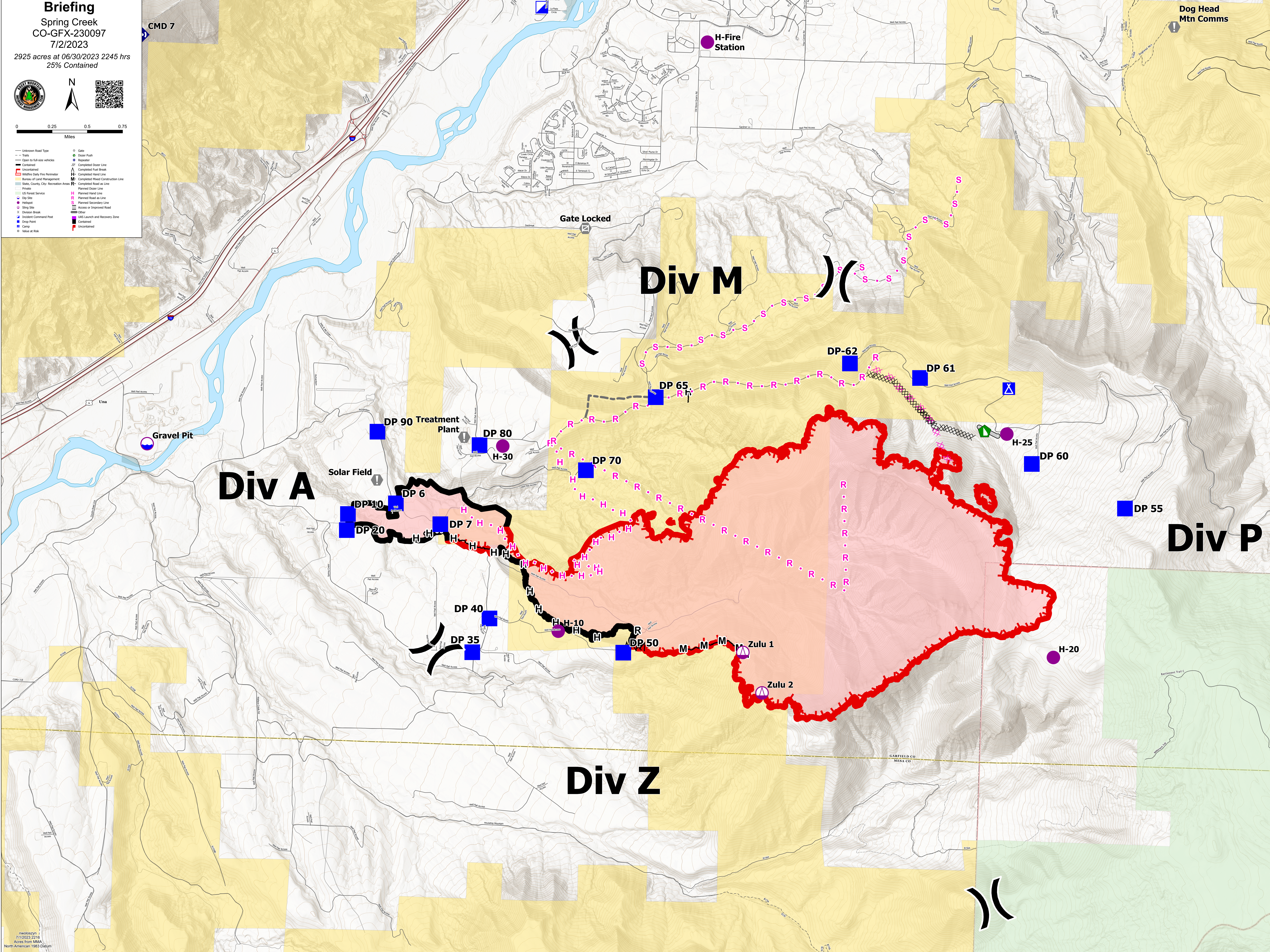
Spring Creek
CO-GFX-230097
7/2/2023

2925 acres at 06/30/2023 2245 hrs
25% Contained



0 0.25 0.5 0.75
Miles

- Unknown Road Type
- Trail
- Open to full-size vehicles
- Contaminated
- Wildfire Daily Fire Perimeter
- Boundary of Land Management
- State, County, City, Recreation Area
- Private
- US Forest Service
- Dip Site
- Hotspot
- Sleep Site
- Division Break
- Incident Command Post
- Camp
- Value at Risk
- Gate
- Doser Push
- Receptor
- Completed Dozer Line
- Completed Fuel Break
- Completed Hand Line
- Completed Hand Construction Line
- Completed Road as Line
- Planned Dozer Line
- Planned Hand Line
- Planned Road as Line
- Planned Secondary Line
- Access or Improved Road
- Other
- USG Launch and Recovery Zone
- Completed
- Uncertain



Div A

Div M

Div P

Div Z