

Pilot Map

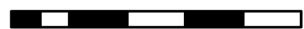
Spring Creek
CO-GFX-230097
07/03/2023

37% Contained

2932 IR acres at 07/02/2023 0015 hrs

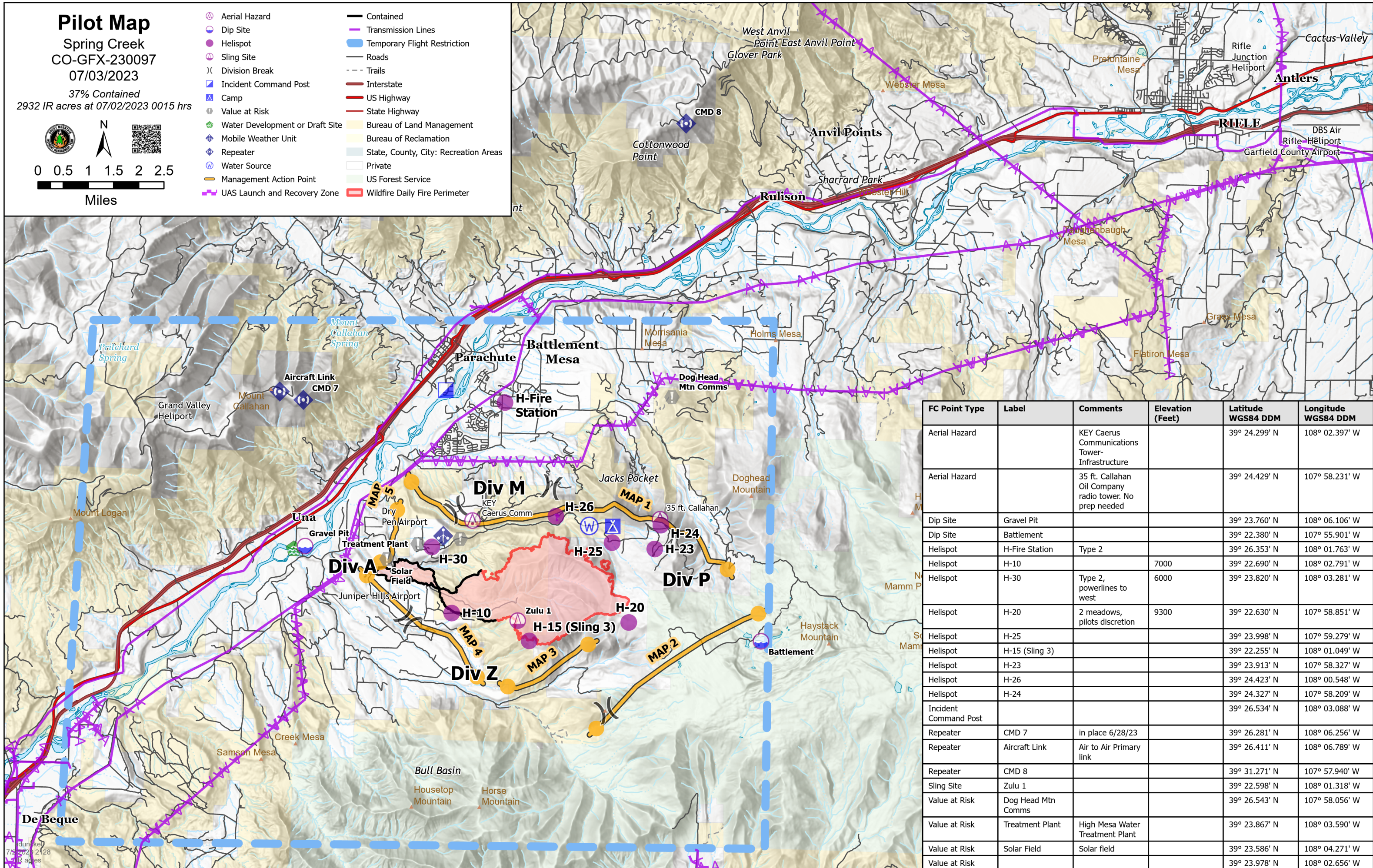


0 0.5 1 1.5 2 2.5



Miles

- Aerial Hazard
- Dip Site
- Helispot
- Sling Site
- Division Break
- Incident Command Post
- Camp
- Value at Risk
- Water Development or Draft Site
- Mobile Weather Unit
- Repeater
- Water Source
- Management Action Point
- UAS Launch and Recovery Zone
- Contained
- Transmission Lines
- Temporary Flight Restriction
- Roads
- Trails
- Interstate
- US Highway
- State Highway
- Bureau of Land Management
- Bureau of Reclamation
- State, County, City: Recreation Areas
- Private
- US Forest Service
- Wildfire Daily Fire Perimeter



FC Point Type	Label	Comments	Elevation (Feet)	Latitude WGS84 DDM	Longitude WGS84 DDM
Aerial Hazard		KEY Caerus Communications Tower-Infrastructure		39° 24.299' N	108° 02.397' W
Aerial Hazard		35 ft. Callahan Oil Company radio tower. No prep needed		39° 24.429' N	107° 58.231' W
Dip Site	Gravel Pit			39° 23.760' N	108° 06.106' W
Dip Site	Battlement			39° 22.380' N	107° 55.901' W
Helispot	H-Fire Station	Type 2		39° 26.353' N	108° 01.763' W
Helispot	H-10		7000	39° 22.690' N	108° 02.791' W
Helispot	H-30	Type 2, powerlines to west	6000	39° 23.820' N	108° 03.281' W
Helispot	H-20	2 meadows, pilots discretion	9300	39° 22.630' N	107° 58.851' W
Helispot	H-25			39° 23.998' N	107° 59.279' W
Helispot	H-15 (Sling 3)			39° 22.255' N	108° 01.049' W
Helispot	H-23			39° 23.913' N	107° 58.327' W
Helispot	H-26			39° 24.423' N	108° 00.548' W
Helispot	H-24			39° 24.327' N	107° 58.209' W
Incident Command Post				39° 26.534' N	108° 03.088' W
Repeater	CMD 7	in place 6/28/23		39° 26.281' N	108° 06.256' W
Repeater	Aircraft Link	Air to Air Primary link		39° 26.411' N	108° 06.789' W
Repeater	CMD 8			39° 31.271' N	107° 57.940' W
Sling Site	Zulu 1			39° 22.598' N	108° 01.318' W
Value at Risk	Dog Head Mtn Comms			39° 26.543' N	107° 58.056' W
Value at Risk	Treatment Plant	High Mesa Water Treatment Plant		39° 23.867' N	108° 03.590' W
Value at Risk	Solar Field	Solar field		39° 23.586' N	108° 04.271' W
Value at Risk				39° 23.978' N	108° 02.656' W

7/2/2023 2:128
IR acres