

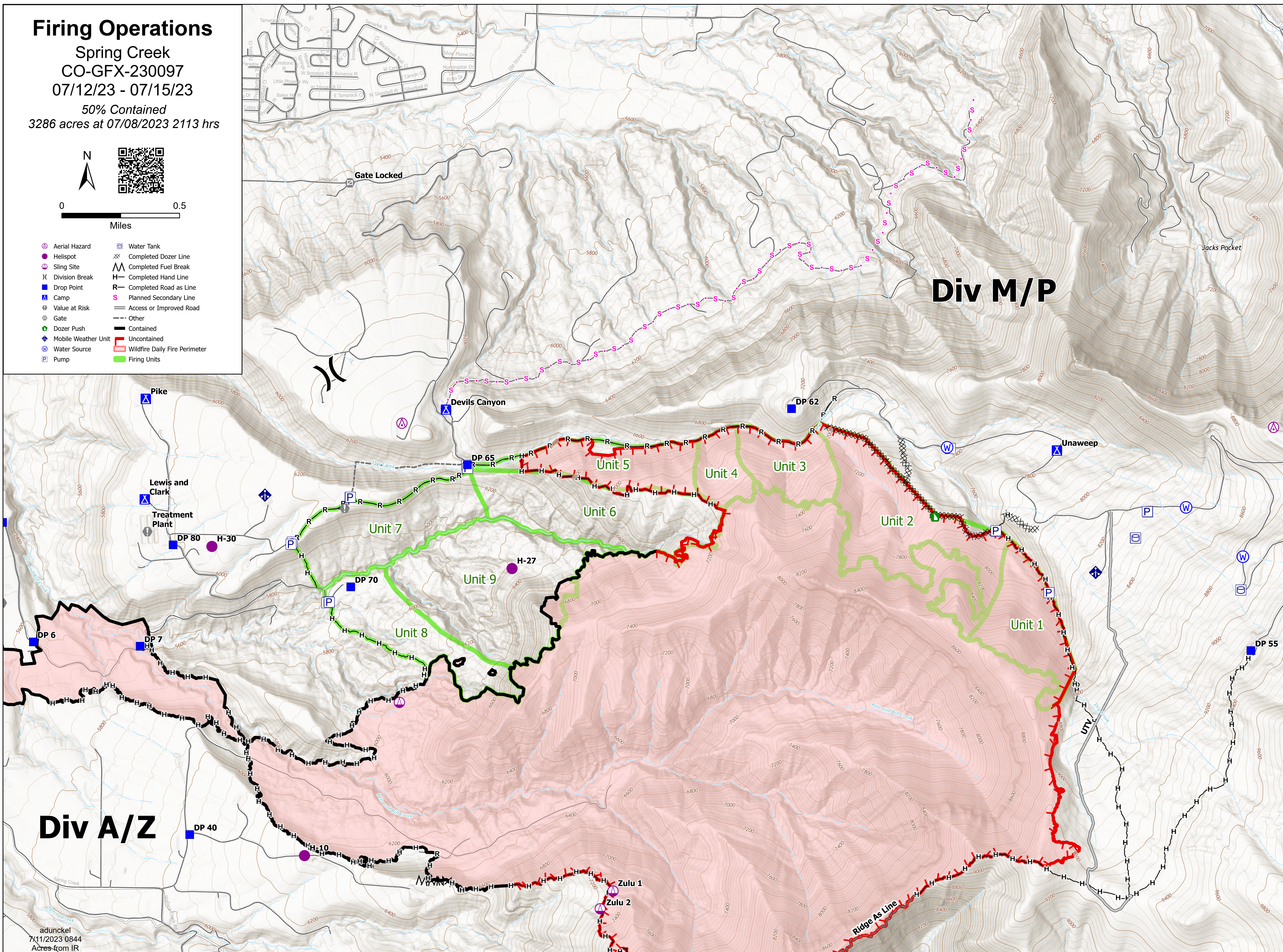
# Firing Operations

Spring Creek  
CO-GFX-230097  
07/12/23 - 07/15/23  
50% Contained  
3286 acres at 07/08/2023 2113 hrs



0 0.5  
Miles

- |                       |                                 |
|-----------------------|---------------------------------|
| ⊕ Aerial Hazard       | ⊕ Water Tank                    |
| ⊙ Helispot            | ⊗ Completed Dozer Line          |
| ⊙ Sling Site          | ⊗ Completed Fuel Break          |
| ⊗ Division Break      | H Completed Hand Line           |
| ⊕ Drop Point          | R Completed Road as Line        |
| ⊕ Camp                | S Planned Secondary Line        |
| ⊕ Value at Risk       | — Access or Improved Road       |
| ⊕ Gate                | — Other                         |
| ⊕ Dozer Push          | — Contained                     |
| ⊕ Mobile Weather Unit | — Uncontained                   |
| ⊕ Water Source        | — Wildfire Daily Fire Perimeter |
| ⊕ Pump                | — Firing Units                  |



## Div M/P

## Div A/Z