

BAER

Spring Creek
CO-GFX-230097

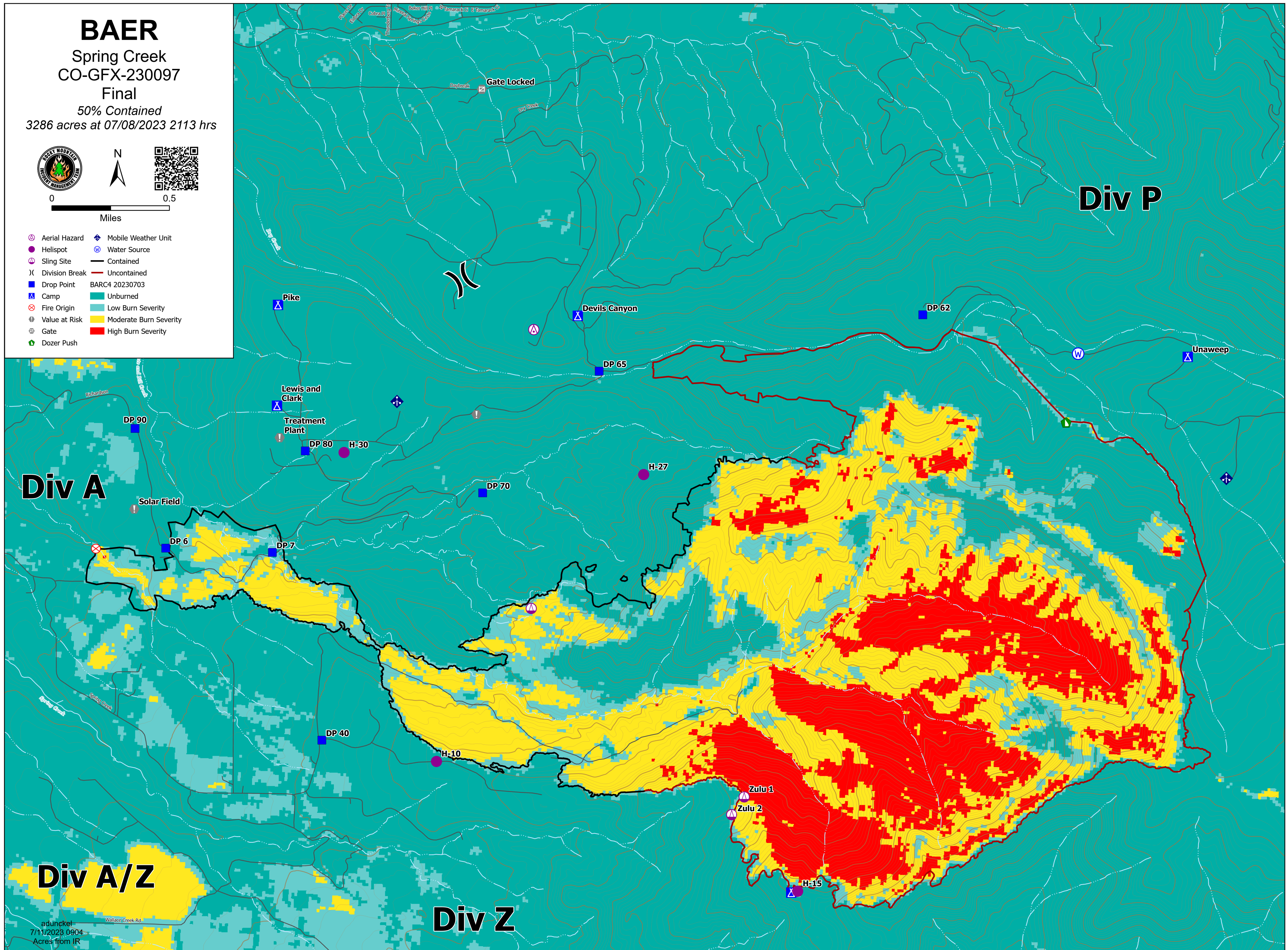
Final

50% Contained

3286 acres at 07/08/2023 2113 hrs



- Aerial Hazard
- Helispot
- Sling Site
- Division Break
- Drop Point
- Camp
- Fire Origin
- Value at Risk
- Gate
- Dozer Push
- Mobile Weather Unit
- Water Source
- Contained
- Uncontained
- BARC4 20230703
- Unburned
- Low Burn Severity
- Moderate Burn Severity
- High Burn Severity



Div A

Div P

Div A/Z

Div Z