

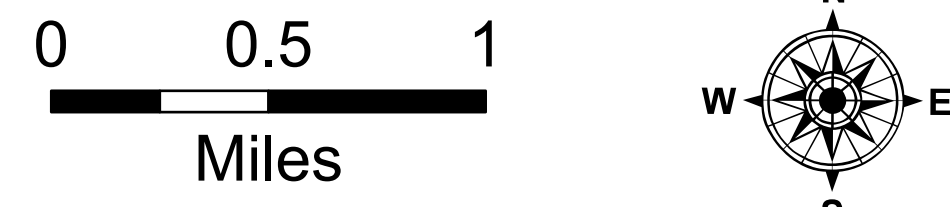
Ops

Bucktail

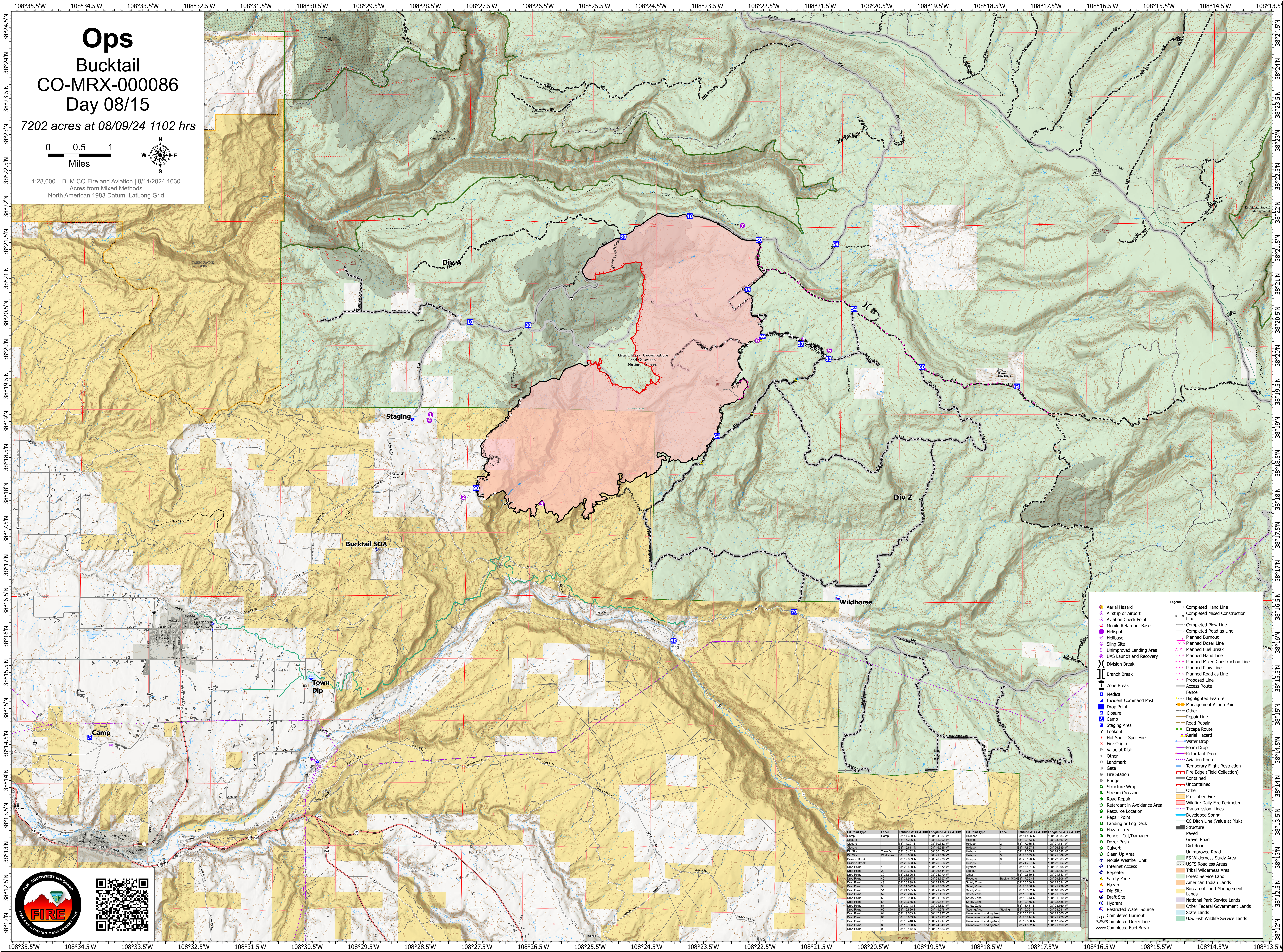
CO-MRX-000086

Day 08/15

7202 acres at 08/09/24 1102 hrs



1:28,000 | BLM CO Fire and Aviation | 8/14/2024 1630
Acres from Mixed Methods
North American 1983 Datum, LatLong Grid



FC Point Type	Label	Latitude N	Longitude W	FC Point Type	Label	Latitude N	Longitude W
Camp	18 009 N	108° 34.507 W	Helibase	14 009 N	108° 33.957 W		
Closure	18 208 N	108° 32.289 W	Helibase	15 009 N	108° 33.289 W		
Closure	18 201 N	108° 30.357 W	Helibase	15 009 N	108° 33.289 W		
Closure	18 111 N	108° 30.880 W	Helibase	15 009 N	108° 33.289 W		
Closure	18 002 N	108° 30.459 W	Helibase	15 009 N	108° 33.289 W		
Dig Site	18 008 N	108° 31.139 W	Helibase	15 009 N	108° 33.289 W		
Division Break	18 002 N	108° 30.656 W	Helibase	15 009 N	108° 33.289 W		
Drop Point	20	108° 30.889 N	108° 30.644 W	Lookout	18 20 761 N	108° 28.861 W	
Drop Point	20	108° 31.026 N	108° 27.872 W	Other	18 20 660 N	108° 22.547 W	
Drop Point	40	108° 31.317 N	108° 23.797 W	Repeater	Bucktail SOA 17 250 N	108° 29.209 W	
Drop Point	40	108° 31.096 N	108° 22.949 W	Safety Zone	Bucktail SOA 17 250 N	108° 29.209 W	
Drop Point	60	108° 31.562 N	108° 22.549 W	Safety Zone	Bucktail SOA 17 250 N	108° 29.209 W	
Drop Point	60	108° 31.539 N	108° 22.949 W	Safety Zone	Bucktail SOA 17 250 N	108° 29.209 W	
Drop Point	80	108° 30.245 N	108° 22.449 W	Safety Zone	Bucktail SOA 17 250 N	108° 29.209 W	
Drop Point	80	108° 31.039 N	108° 21.139 W	Safety Zone	Bucktail SOA 17 250 N	108° 29.209 W	
Drop Point	84	108° 30.839 N	108° 20.881 W	Safety Zone	Bucktail SOA 17 250 N	108° 29.209 W	
Drop Point	84	108° 31.143 N	108° 21.139 W	Safety Zone	Bucktail SOA 17 250 N	108° 29.209 W	
Drop Point	88	108° 30.828 N	108° 19.679 W	Staging Area	18 18 081 N	108° 28.881 W	
Drop Point	88	108° 31.053 N	108° 17.997 W	Unimproved Landing Area	18 18 081 N	108° 28.881 W	
Drop Point	88	108° 30.883 N	108° 23.297 W	Unimproved Landing Area	18 20 214 N	108° 21.719 W	
Drop Point	90	108° 31.026 N	108° 21.139 W	Unimproved Landing Area	18 19 809 N	108° 21.268 W	
Drop Point	90	108° 30.998 N	108° 20.649 W	Unimproved Landing Area	18 19 809 N	108° 21.268 W	
Drop Point	90	108° 30.110 N	108° 27.850 W	Unimproved Landing Area	18 19 809 N	108° 21.268 W	

Legend

- Aerial Hazard
- Airstrip or Airport
- Aviation Check Point
- Mobile Retardant Base
- Helibase
- Sling Site
- Unimproved Landing Area
- UAS Launch and Recovery
- Division Break
- Zone Break
- Medical
- Incident Command Post
- Drop Point
- Closure
- Camp
- Staging Area
- Hot Spot - Spot Fire
- Fire Origin
- Value at Risk
- Other
- Landmark
- Gate
- Fire Station
- Bridge
- Structure Wrap
- Stream Crossing
- Road Repair
- Retardant in Avoidance Area
- Resource Location
- Repair Point
- Landing or Log Deck
- Hazard Tree
- Fence - Cut/Damaged
- Dozer Push
- Culvert
- Clean Up Area
- Mobile Weather Unit
- Internet Access
- Repeater
- Safety Zone
- Hazard
- Dig Site
- Draft Site
- Hydrant
- Restricted Water Source
- Completed Burnout
- Completed Dozer Line
- Completed Fuel Break
- Completed Hand Line
- Completed Mixed Construction Line
- Completed Plow Line
- Completed Road as Line
- Planned Burnout
- Planned Dozer Line
- Planned Fuel Break
- Planned Hand Line
- Planned Mixed Construction Line
- Planned Plow Line
- Planned Road as Line
- Proposed Line
- Access Route
- Fence
- Highlighted Feature
- Management Action Point
- Other
- Repair Line
- Road Repair
- Escape Route
- Aerial Hazard
- Water Drop
- Foam Drop
- Retardant Drop
- Aviation Route
- Temporary Flight Restriction
- Fire Edge (Field Collection)
- Contained
- Uncontained
- Stream Crossing
- Prescribed Fire
- Wildfire Daily Fire Perimeter
- Transmission Lines
- Developed Spring
- Repair Point
- Landing or Log Deck
- Hazard Tree
- Raved
- Gravel Road
- Dirt Road
- Unimproved Road
- FS Wilderness Study Area
- Forest Service Land
- American Indian Lands
- Bureau of Land Management Lands
- National Park Service Lands
- Other Federal Government Lands
- State Lands
- U.S. Fish Wildlife Service Lands