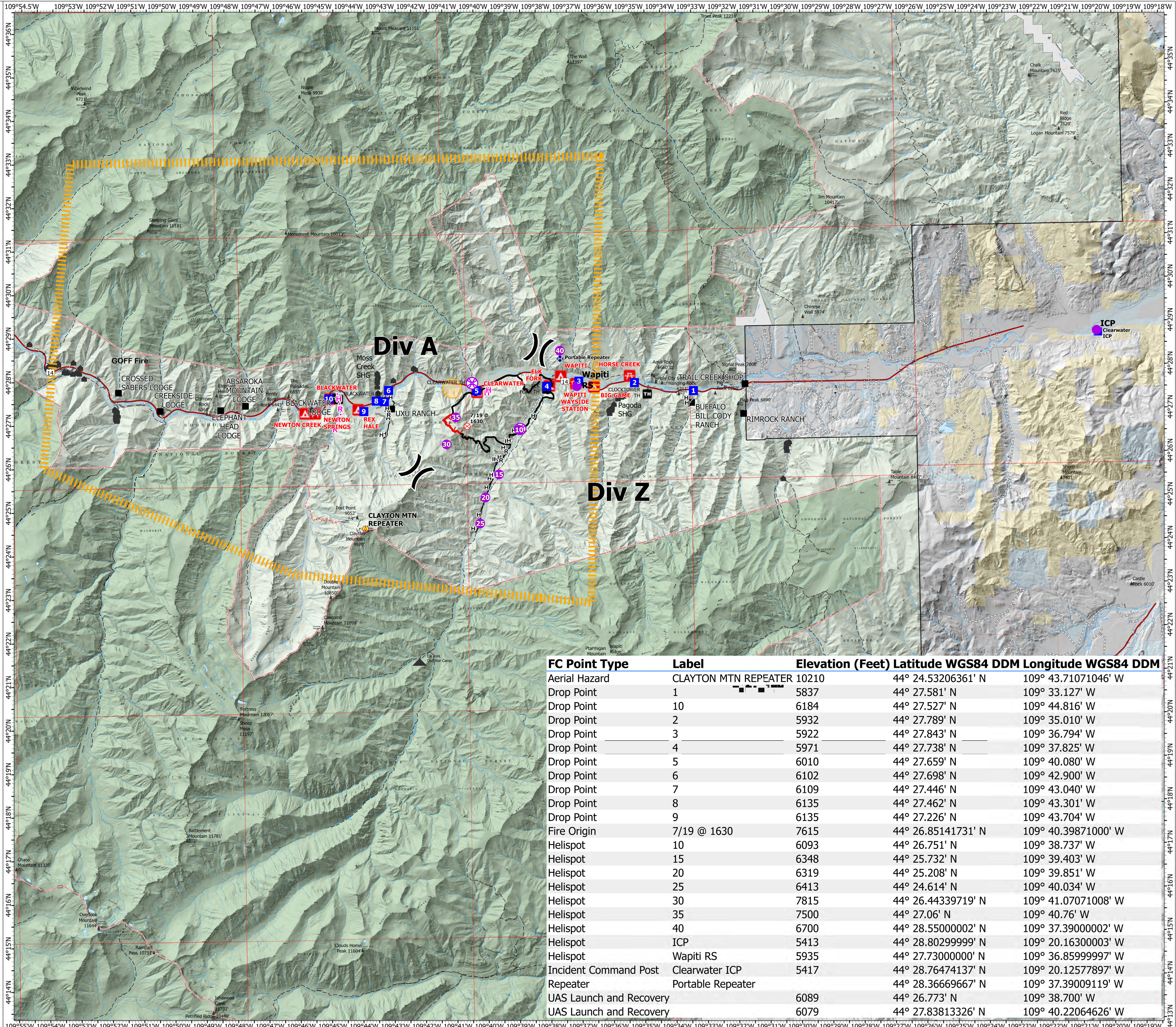


# Air Ops Map

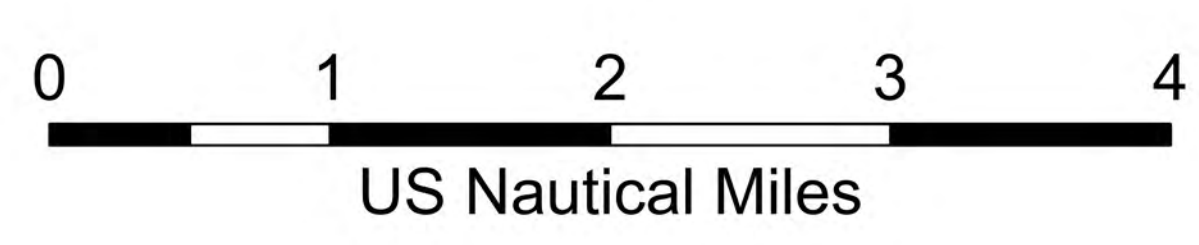
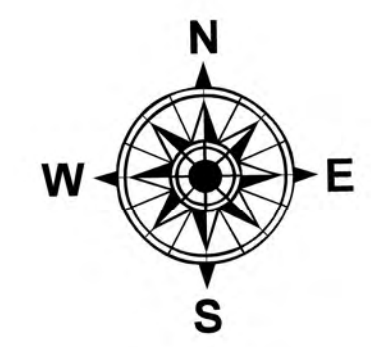
Clearwater  
WY-SHF-225  
August 27, 2024

1,966 acres 8/16/2024 @ 1151

- Area of eagle nest
- ▲ Rec Residences
- Ranch/Lodge
- ▲ Outfitter
- ▲ Campground
- Visitor Center
- Picnic Site
- Trailhead
- ⊗ Fire Origin
- X Division Break
- Aerial Hazard
- Helispot
- ⊗ UAS Launch and Recovery
- Incident Command Post
- Drop Point
- ◆ Repeater
- H Planned Hand Line
- R Planned Road as Line
- H Completed Hand Line
- R Completed Road as Line
- Access Route
- ||| Temporary Flight Restriction
- Contained
- Uncontained
- Wildfire Daily Fire Perimeter
- Bureau of Land Management (BLM)
- Local Government
- State
- US Forest Service (USFS)
- USFS Wilderness Area
- Township/Range - Protracted
- Township/Range - Surveyed



FC Point Type	Label	Elevation (Feet)	Latitude WGS84 DDM	Longitude WGS84 DDM
Aerial Hazard	CLAYTON MTN REPEATER	10210	44° 24.53206361' N	109° 43.71071046' W
Drop Point	1	5837	44° 27.581' N	109° 33.127' W
Drop Point	10	6184	44° 27.527' N	109° 44.816' W
Drop Point	2	5932	44° 27.789' N	109° 35.010' W
Drop Point	3	5922	44° 27.843' N	109° 36.794' W
Drop Point	4	5971	44° 27.738' N	109° 37.825' W
Drop Point	5	6010	44° 27.659' N	109° 40.080' W
Drop Point	6	6102	44° 27.698' N	109° 42.900' W
Drop Point	7	6109	44° 27.446' N	109° 43.040' W
Drop Point	8	6135	44° 27.462' N	109° 43.301' W
Drop Point	9	6135	44° 27.226' N	109° 43.704' W
Fire Origin	7/19 @ 1630	7615	44° 26.85141731' N	109° 40.39871000' W
Helispot	10	6093	44° 26.751' N	109° 38.737' W
Helispot	15	6348	44° 25.732' N	109° 39.403' W
Helispot	20	6319	44° 25.208' N	109° 39.851' W
Helispot	25	6413	44° 24.614' N	109° 40.034' W
Helispot	30	7815	44° 26.44339719' N	109° 41.07071008' W
Helispot	35	7500	44° 27.06' N	109° 40.76' W
Helispot	40	6700	44° 28.55000002' N	109° 37.39000002' W
Helispot	ICP	5413	44° 28.80299999' N	109° 20.16300003' W
Helispot	Wapiti RS	5935	44° 27.73000000' N	109° 36.85999997' W
Incident Command Post	Clearwater ICP	5417	44° 28.76474137' N	109° 20.12577897' W
Repeater	Portable Repeater		44° 28.36669667' N	109° 37.39009119' W
UAS Launch and Recovery		6089	44° 26.773' N	109° 38.700' W
UAS Launch and Recovery		6079	44° 27.83813326' N	109° 40.22064626' W



1:50,000 | jre | 8/26/2024 1719  
Acres from GPS, UAS, and MMA  
North American 1983 Datum, Lat/Long Grid