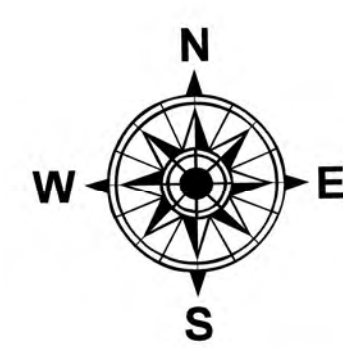


Briefing Map

Clearwater
WY-SHF-225
August 27, 2024

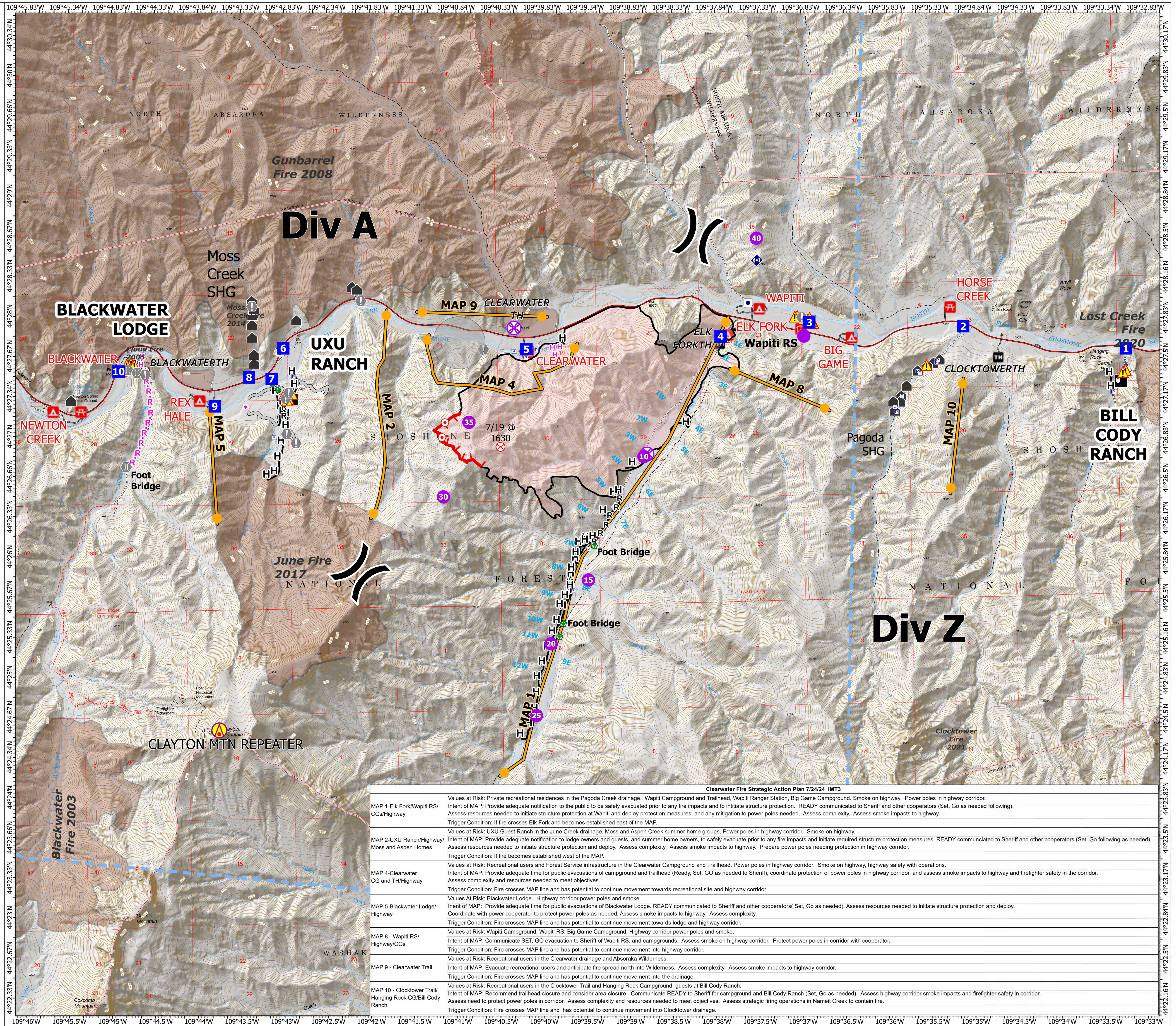
1,966 acres at 8/16/2024 @ 1151

- Area of eagle nest
- ▲ Rec Residences
- Ranch/Lodge
- ▲ Campground
- 🏠 Visitor Center
- 🏡 Picnic Site
- 🚶 Trailhead
- 🏠 Other Property
- 🚰 Pump
- 🛢 Water Tank
- 🔥 Fire Origin
- 🔥 Hot Spot - Spot Fire
- ⌘ Division Break
- 🚁 Aerial Hazard
- 🚁 Helispot
- 🚁 UAS Launch and Recovery
- 📡 Drop Point
- ⚠ Hazard
- 🏠 Value at Risk
- 🌉 Bridge
- 🌿 Stream Crossing
- 🌿 Resource Location
- 📡 Repeater
- Planned Hand Line
- Planned Road as Line
- Proposed Line
- Completed Hand Line
- Completed Road as Line
- Access Route
- Management Action Point
- Other
- Temporary Flight Restriction
- Contained
- Uncontained
- Wildfire Daily Fire Perimeter
- Historic Fires (since 2000)



0 1
Miles

1:18,000 | jre | 8/26/2024 1741
Acres from GPS, UAS, and MMA
North American 1983 Datum, Lat/Long Grid



Clearwater Fire Strategic Action Plan 7/24/24 IMT3	
MAP 1-Elk Fork/Wapiti RS/CGs/Highway	Values at Risk: Private recreational residences in the Pagoda Creek drainage. Wapiti Campground and Trailhead, Wapiti Ranger Station, Big Game Campground. Smoke on highway. Power poles in highway corridor. Intent of MAP: Provide adequate notification to the public to be safely evacuated prior to any fire impacts and to initiate structure protection. READY communicated to Sheriff and other cooperators (Set, Go as needed following). Assess resources needed to initiate structure protection at Wapiti and deploy protection measures, and any mitigation to power poles needed. Assess complexity. Assess smoke impacts to highway. Trigger Condition: If fire crosses Elk Fork and becomes established east of the MAP.
MAP 2-Uxu Ranch/Highway/Moss and Aspen Homes	Values at Risk: UXU Guest Ranch in the June Creek drainage. Moss and Aspen Creek summer home groups. Power poles in highway corridor. Smoke on highway. Intent of MAP: Provide adequate notification to lodge owners and guests, and summer home owners, to safely evacuate prior to any fire impacts and initiate required structure protection measures. READY communicated to Sheriff and other cooperators (Set, Go following as needed). Assess resources needed to initiate structure protection and deploy. Assess complexity. Assess smoke impacts to highway. Prepare power poles needing protection in highway corridor. Trigger Condition: If fire becomes established west of the MAP.
MAP 4-Clearwater CG and TH/Highway	Values at Risk: Recreational users and Forest Service infrastructure in the Clearwater Campground and Trailhead. Power poles in highway corridor. Smoke on highway, highway safety with operations. Intent of MAP: Provide adequate time for public evacuations of campground and trailhead (Ready, Set, GO as needed to Sheriff), coordinate protection of power poles in highway corridor, and assess smoke impacts to highway and firefighter safety in the corridor. Assess complexity and resources needed to meet objectives. Trigger Condition: Fire crosses MAP line and has potential to continue movement towards recreational site and highway corridor.
MAP 5-Blackwater Lodge/Highway	Values At Risk: Blackwater Lodge. Highway corridor power poles and smoke. Intent of MAP: Provide adequate time for public evacuations of Blackwater Lodge. READY communicated to Sheriff and other cooperators (Set, Go as needed). Assess resources needed to initiate structure protection and deploy. Coordinate with power cooperator to protect power poles as needed. Assess smoke impacts to highway. Assess complexity. Trigger Condition: Fire crosses MAP line and has potential to continue movement towards lodge and highway corridor.
MAP 8 - Wapiti RS/Highway/CGs	Values at Risk: Wapiti Campground, Wapiti RS, Big Game Campground, Highway corridor power poles and smoke. Intent of MAP: Communicate SET, GO evacuation to Sheriff of Wapiti RS, and campgrounds. Assess smoke on highway corridor. Protect power poles in corridor with cooperator. Trigger Condition: Fire crosses MAP line and has potential to continue movement into highway corridor.
MAP 9 - Clearwater Trail	Values at Risk: Recreational users in the Clearwater drainage and Absaroka Wilderness. Intent of MAP: Evacuate recreational users and anticipate fire spread north into Wilderness. Assess complexity. Assess smoke impacts to highway corridor. Trigger Condition: Fire crosses MAP line and has potential to continue movement into the drainage.
MAP 10 - Clocktower Trail/Hanging Rock CG/Bill Cody Ranch	Values at Risk: Recreational users in the Clocktower Trail and Hanging Rock Campground, guests at Bill Cody Ranch. Intent of MAP: Recommend trailhead closure and consider area closure. Communicate READY to Sheriff for campground and Bill Cody Ranch (Set, Go as needed). Assess highway corridor smoke impacts and firefighter safety in corridor. Assess need to protect power poles in corridor. Assess complexity and resources needed to meet objectives. Assess strategic firing operations in Nannet Creek to contain fire. Trigger Condition: Fire crosses MAP line and has potential to continue movement into Clocktower drainage.