

Elk

INCIDENT ACTION PLAN

September 30, 2024

0730-2000



Matt Weakland – IC

Janos Czaban – IC (t)

WY-BHF-000399 P2 R82Z (0202)



IAPs, Check-in, Maps

ORGANIZATION ASSIGNMENT LIST (ICS 203)

1. Incident Name: Elk		2. Operational Period: Date From: 9/29/2024 Time From: 0700		Date To: 9/29/2024 Time To: 2000	
3. Incident Commander(s) and Command Staff:			7. Operations Section:		
IC/UCs	Matt Weakland	Chief	Don Hammack		
IC(t)	Janos Czaban	Deputy	Ryan Joseph (t)		
		Planning			
Deputy		Staging Area			
Safety Officer		Branch			
Public Info. Officer	Sara Kirol	Branch Director			
Liaison Officer	Cordell Perkins	Deputy			
4. Agency/Organization Representatives:			Division/Group	Gary Hobbs	Low Country (Down)
Agency/Organization	Name	Division/Group	Andrew Parker		High Country (Up)
Bighorns National Forest	Andrew Johnson	Division/Group			
Wyoming State Forestry	Jacob McCarthy	Division/Group			
Sheridan County	Chris Thomas	Division/Group			
		Branch			
		Branch Director			
		Deputy			
5. Planning Section:			Division/Group		
Chief	Travis Pardue (v)	Division/Group			
Deputy		Division/Group			
Resources Unit		Division/Group			
Situation Unit		Division/Group			
Documentation Unit		Branch			
Demobilization Unit		Branch Director			
Technical Specialists		Deputy			
GISS	Jennifer Baxter	Division/Group			
READ	Casey Barby	Division/Group			
		Division/Group			
6. Logistics Section:			Division/Group		
Chief	Steve Watkins	Division/Group			
Deputy	Jackie Roduner	Air Operations Branch			
Support Branch			Air Ops Branch Dir.		
Base Camp	Terra Thomas				
Supply Unit					
Facilities Unit		8. Finance/Administration Section:			
Ground Support Unit		Chief	Darla Pindell		
Service Branch			Deputy		
Director		Time Unit			
Communications Unit		Procurement Unit			
Medical Unit		Comp/Claims Unit			
Food Unit		Cost Unit			
9. Prepared by: Name: <u>Travis Pardue</u> Position/Title: <u>PSC3</u> Signature: _____					
ICS 203		IAP Page _____		Date/Time: _____	

Spot Forecast for Elk Fire...USFS
National Weather Service Billings MT
713 PM MDT Sun Sep 29 2024

Forecast is based on forecast start time of 1900 MDT on September 29.
If conditions become unrepresentative...contact the National Weather
Service.

Please contact our office if you have questions
or concerns with this forecast.

.DISCUSSION...

A cold front will quickly shift winds out of the northwest late
this evening around 11 PM MDT. With this, gusts of 30 to 35 mph
are possible with the initial frontal passage. Expect ridgetop
winds to be strong this evening before decreasing by midnight.
Otherwise, breezy northwesterly surface winds will continue behind
the front tonight through Monday before light winds return Monday
evening and night. Winds will turn back out of the southwest
Tuesday. Relative humidities will temporarily increase behind the
front tonight, but will decrease again early Monday morning with
only moderate recoveries again Monday night.

.TONIGHT...

Sky/weather.....Mostly clear.
CWR.....0 percent.
LAL.....1...no thunderstorms.
Min temperature.....33-36.
Max humidity.....40-44 percent.
Wind (20 ft).....
Slope/valley.....West 10 to 15 mph early becoming northwest
10 to 15 mph with gusts to 25 mph by 11 PM MDT.
Ridgetop.....West 30 to 40 mph early decreasing to west to
northwest around 15 to 20 mph by midnight.
Mixing height.....Decreasing to 800 ft AGL.
Transport winds.....Northwest around 20 mph.

.MONDAY...

Sky/weather.....Sunny.
CWR.....0 percent.
LAL.....1...no thunderstorms.
Max temperature.....44-48.
Min humidity.....26-30 percent.
Wind (20 ft).....
Slope/valley.....Northwest 9 to 14 mph with gusts to
around 25 mph.
Ridgetop.....West around 20 mph.
Mixing height.....Increasing to 4500 ft AGL.
Transport winds.....Northwest around 20 mph.
Haines index.....3.

.MONDAY NIGHT...

Sky/weather.....Mostly clear.

CWR.....0 percent.
LAL.....1...no thunderstorms.
Min temperature.....30-34.
Max humidity.....36-40 percent.
Wind (20 ft).....
Slope/valley.....Downslope/valley 4 to 7 mph.
Ridgetop.....West around 15 mph.
Mixing height.....Decreasing to 700 ft AGL.
Transport winds.....West around 15 mph.

.TUESDAY...

Sky/weather.....Mostly sunny.
CWR.....0 percent.
LAL.....1...no thunderstorms.
Max temperature.....60-64.
Min humidity.....15-19 percent.
Wind (20 ft).....
Slope/valley.....Southwest 9 to 13 mph.
Ridgetop.....West around 15 mph.
Mixing height.....Increasing to 4000 ft AGL.
Transport winds.....West around 15 mph.
Haines index.....4.

DIVISION/GROUP ASSIGNMENT LIST (ICS 204 WF)

Controlled Unclassified Information//Basic

1. Incident Name				3.			
Elk				Branch	Division High County (Up)		
2. Operational Period Day							
Date/Time From: 9/30/2024		Date/Time To: 9/30/2024					
4. Operations Personnel							
Operations Chief		Don Hammack/Ryan Joseph (t)		Division/Group Supervisor		Andrew Parker	
Branch Director				Air Attack Supervisor			
5. Resources Assigned this Period							
Strike Team/Task Force/ Resource Designator		EMT	LWD	Leader	Number Persons	Drop Off PT./Time	Pick Up PT./Time
C-1 CR2I Fort Apache		1		Skyler Stanley	20	0700 Burgess	2000 Burgess
C- CRW1 Wyoming IHC						0700 Burgess	2000 Burgess
C-3 CRW1 Logan IHC						0700 Burgess	2000 Burgess
E-1 DZR3 Park County Dozer						0700 Burgess	2000 Burgess
E- Bighorn Dozer						0700 Burgess	2000 Burgess
E- Bighorn Blade						0700 Burgess	2000 Burgess
O- Black Tooth						0700 Burgess	2000 Burgess
Ambulance						0700 Burgess	2000 Burgess
6. Control Operations/Work Assignments:" Scout and identify indirect/direct control features.							
7. Special Instructions: Northeast Portable Repeater: 170.4750 (110.9), 164.1500 (103.5)							
8. Division/Group Communication Summary							
Function	Channel	RX Frequency N/W	RX Tone/NAC	TX Frequency N/W	TX Tone/NAC	Mode	
Command	Dome Peak (pri)	170.475	110.9	164.15	167.9	A	
Tactical Div/Group	R2 Tac	168.675		168.675		A	
Logistics							
Air to Ground	A/G Primary	166.6125		166.6125		A	
9. Prepared by (Resource Unit Leader)				Approved by (Planning Section Chief) Travis Pardue PSC3		Date 9/29/24	Time 2100

DIVISION/GROUP ASSIGNMENT LIST (ICS 204 WF)

Controlled Unclassified Information//Basic

1. Incident Name				3.			
Elk				Branch	Division Low Country (Down)		
2. Operational Period Day							
Date/Time From: 9/30/2024		Date/Time To: 9/30/2024					
4. Operations Personnel							
Operations Chief		Don Hammack/Ryan Joseph (t)		Division/Group Supervisor		Gary Hobbs	
Branch Director				Air Attack Supervisor			
5. Resources Assigned this Period							
Strike Team/Task Force/ Resource Designator		EMT	LWD	Leader	Number Persons	Drop Off PT./Time	Pick Up PT./Time
C-7 CRW1 Tatanka IHC					20	0700	2000
C-4 CRW1 Flathead IHC		3		Matt Delaney	22	0700	2000
C-2 CRW1 Entiat IHC					22	0700	2000
E-7 Worland Eng 62						0700	2000
E-8 Fremont Eng 142				Rich Rogers	3	0700	2000
E-9 Fremont Eng 143				Chaz Brown	3	0700	2000
6. Control Operations/Work Assignments:" Scout and identify indirect/direct control features.							
7. Special Instructions: Northeast Portable Repeater: 170.4750 (110.9), 164.1500 (103.5)							
8. Division/Group Communication Summary							
Function	Channel	RX Frequency N/W	RX Tone/NAC	TX Frequency N/W	TX Tone/NAC	Mode	
Command	Dome Peak (pri)	170.475	110.9	164.15	167.9	A	
Tactical Div/Group	BH Tac	166.55		166.56		A	
Logistics							
Air to Ground	A/G Primary	166.6125		166.6125		A	
9. Prepared by (Resource Unit Leader)				Approved by (Planning Section Chief) Travis Pardue PSC3		Date 9/29/24	Time 2100

HEALTH AND SAFETY MESSAGE

SAFETY starts with ***YOU***

We are **ALL** accountable for **SAFE** behaviors

For Day Operations: 9/30/2024

INCIDENT: Elk | DATE: 9/30/2024 | TIME:

Major Hazards and Risks:

- **DRIVING:** Speed, distractions, not paying attention.
- **HAZARD TREES....**Look up.....Look down.....Look around!!!

MANAGE FATIGUE

REMEMBER -- FATIGUE IS CUMULATIVE!!!

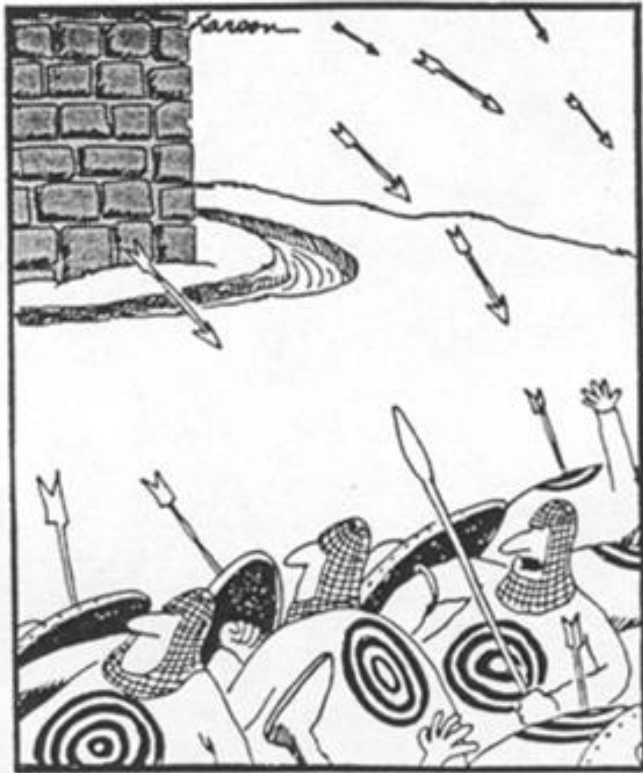
- | | |
|---|---|
| <input type="checkbox"/> Adequate Rest? | <input type="checkbox"/> Driving too far? |
| <input type="checkbox"/> Overwhelmed (in over your head)? | <input type="checkbox"/> Personal Hygiene? |
| <input type="checkbox"/> Proper Nutrition? | <input type="checkbox"/> Been out to many days? |

Complete the checklist for yourself.

**** Check out Today's 6 Minutes for Safety ****

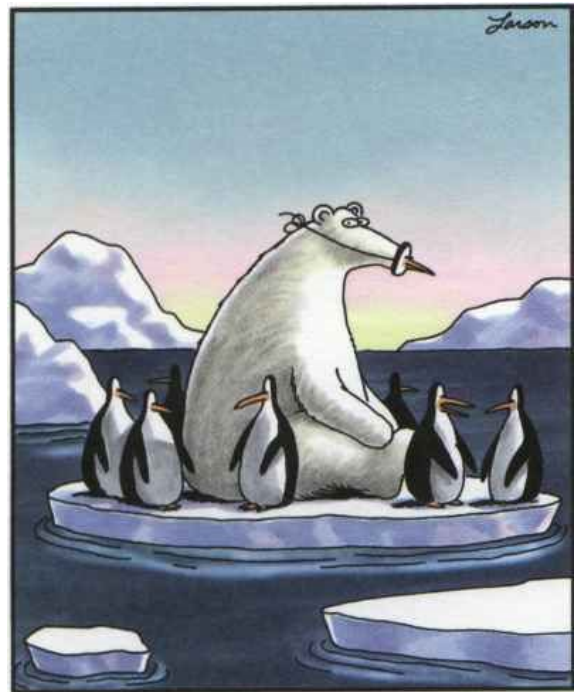
STANDARD FIREFIGHTING ORDERS

Give clear instructions and be sure they are understood.



"What did I say, Jay?...These new uniforms are a crock!"

How's your Situational Awareness Today???



"And now Edgar's gone. ...
Something's going on around here."

Don't let the mop up and gridding fool you...

Safety Officer Yourself

MEDICAL PLAN (ICS 206 WF)

Controlled Unclassified Information//Basic

1. Incident/Project Name	2. Operational Period
Elk Fire	Date/Time 9/29/2024

3. Ambulance Services				
Name	Complete Address	Phone & EMS Frequency	Advanced Life Support (ALS)	
			Yes	No
WY Regional EMS – Sheridan County	Sheriff Dispatched	307-672-3453	Y	
Johnson County Ambulance - Buffalo	Sheriff Dispatched	307-684-5581		N
Washakie County Ambulance	Sheriff Dispatched	307-347-2242		N
Big Horn County Ambulance	Sheriff Dispatched	307-568-2035		N
VFD ambulances located in Shell, Tensleep, Dayton	Sheriff Dispatched	See Sheriff Above		N
EMPF Ross Byrd	FOB	307-399-2319	Y	
Pueblo Ambulance				

4. Air Ambulance Services	Air to Ground for Life Flight in WY is VMed28	RX/TX 155.3400, TX tone 156.7
----------------------------------	--	--------------------------------------

Name	Phone	Type of Aircraft & Capability
Riverton Classic Life Guard (LifeGuard 4)	800-444-9223	Bell 407 (115 knots/ 132 mph) 24 hr
Cody Eagle Med (EagleMed 34)	800-525-5220	AS350B3 "A-Star" (120 knots/ 138 mph) 24 hr
St. Vincent's Helpflight (HelpFlight 1) Billings	800-538-4357	EC 135 (119 knots/ 137 mph) 24 hr 15,000' max
Wyoming Medical Center Casper - Air Methods (WYO Life 1)	800-806-9158	Bell 407 (115 knots/ 132 mph) 24 hr
Billings Clinic Med Flight	800-325-1774	EC 145E
Incident Helicopter Designated as Medevac		

5. Hospitals – If using agency/incident helicopter to transport, CALL FIRST to inform hospital of pad needed.
--

Name Complete Address	GPS Datum – WGS 84 Coordinate Standard Degrees Decimal Minutes DD° MM.MMM' N - Lat DD° MM.MMM' W - Long		Travel Time Air Gnd		Phone	Helipad Yes No		Level of Care Facility
	Lat:	Long:						
Johnson County Memorial (Buffalo) 497 W. Lott St., 82834	Lat:	N 44 21.050'			307-684-5521 FAX 684-5385	<input checked="" type="checkbox"/>	<input type="checkbox"/>	Helipad in parking lot west side of facility Level V - Trauma Receiving Facility
	Long:	W 106 42.434'						
	VHF:	155.265						
Sheridan County Memorial (Sheridan) 1401 W. 5 th St. 82801	Lat:	N 44 48.450'			307-672-1000 FAX 672-1112	<input checked="" type="checkbox"/>	<input type="checkbox"/>	Helipad south side of facility. Level III - Area Trauma Hospital
	Long:	W 106 58.517'						
	VHF:	155.340						
North Big Horn Hospital, Lovell 1115 Lane 12, 82431	Lat:	N 44 49.578'			307-548-5200 FAX 548-5205	<input checked="" type="checkbox"/>	<input type="checkbox"/>	Helipad E of hospital - front lawn Level V - Trauma Receiving Facility
	Long:	W 108 23.337'						
	VHF:	155.280						

MEDICAL PLAN (ICS 206 WF)

Controlled Unclassified Information//Basic

1. Incident/Project Name			2. Operational Period					
West Park Hospital – Cody 707 Sheridan Ave. 82414	Lat:	N 44 31.353'			307-527-7501 FAX 578-2289	X		Helipad N Side of hospital Level III Area Trauma Hospital
	Long:	W 109 4.009'						
	VHF:	155.280						
Three Rivers Health 388 Hwy 20 South, Basin WY 82410	Lat:	N 44 26.030'			307-568-3311 FAX 568-2139	☒	☐	Land on lawn adjacent to hospital Level V – Trauma Receiving Facility
	Long:	W 108 3.002'						
	VHF:	155.280						
Washakie Medical Center Worland 400 S. 15 th St., Worland, WY 82401	Lat:	N 44 0.733'			307-347-3221 FAX 347-6971	X		Helipad SW Corner of Hospital Level IV Community Trauma Hospital
	Long:	W 107 56.965'						
	VHF:	150.00						
Wyoming Medical Center Casper 1233 East 2 nd St, 82601	Lat:	N 42 50.86°			307-577-7201 FAX 577-7862	X		Helipad on roof Level II Regional Trauma Center
	Long:	W 106 18.50°						
	VHF:	155.340						
St. Vincent's HealthCare Billings MT 1233 North 30 th , 59107	Lat:	N 45 47.629'			406-657-7000 FAX 406-237-4125	X		Helipad on roof Level II Regional Trauma Center
	Long:	W 108 31.123'						
	VHF:	155.340						
Billings Clinic 801 N. 29 th St Billings MT 59107	Lat:	45 47.372'			406-238-2500	x		Level 1 Trauma Center
	Long:	108 30.6797'						
	VHF:							
Western States Burn Center					970-810-6075			Burn Center
6. Division Branch Group			Area Location Capability					
Click or tap here to enter text.	EMS Responders & Capability:		Click or tap here to enter text.					
	Equipment Available on Scene:		Click or tap here to enter text.					
	Medical Emergency Channel:		Click or tap here to enter text.					
	ETA for Ambulance to Scene:		Click or tap here to enter text.					
	Air:		Click or tap here to enter text.					
	Ground:		Click or tap here to enter text.					
	Approved Helispot:		Click or tap here to enter text.					
	Lat:		Click or tap here to enter text.					
Long:		Click or tap here to enter text.						
Click or tap here to enter text.	EMS Responders & Capability:		Click or tap here to enter text.					
	Equipment Available on Scene:		Click or tap here to enter text.					
	Medical Emergency Channel:		Click or tap here to enter text.					
	ETA for Ambulance to Scene:		Click or tap here to enter text.					
	Air:		Click or tap here to enter text.					
	Ground:		Click or tap here to enter text.					
	Approved Helispot:		Click or tap here to enter text.					
	Lat:		Click or tap here to enter text.					
Long:		Click or tap here to enter text.						

AIR OPERATIONS SUMMARY

Prepared By: Gabe Vera

Prepared Date: 09/29/24

Prepared Time: 1700

1. INCIDENT NAME: ELK	2. OPS PERIOD DATE: 09/30/24	START TIME: 0800	END TIME: 1900	SUNRISE: 0705	SUNSET: 1848	PUMPKIN: 1918
3. REMARKS (Safety Notes, Hazards, and Air Operations Special Equipment, etc.): All missions require Risk Analysis, and documentation of Risk Management Process		4. READY ALERT AIRCRAFT MEDEVAC: Order through Cody Dispatch		5. TFR #: 4/1704 Surface to 12,500' MSL 7NM Radius 44 54.00N/ 107 34.00W **New TFR on order, will update 9/30		
FOLLOW WIND LIMITATION PROTOCOLS WHEN CONDUCTING AIR OPERATIONS ** LOW VISIBILITY, HIGH WINDS, AND SMOKE have been safety issues**						
Email Cost to 2024.elk.finance@firenet.gov and cc.hgillilia@blm.gov						

6. PERSONNEL	NAME	PHONE #	7. FREQUENCIES	AM	FM	8. FIXED-WING- Type/ Make-Model/ N#/ Base
	Henry Gilliland	307-349-6823	A/A Primary - TFR A/A Secondary	123.5750 118.6000		Order through proper channels Air Attack: N325FS (IR, Mapping) Relief Air Attack: Order as needed Lead Plane: Order as needed
			A/G - Primary		166.6125	SEATS/Air Tankers/Scoopers: Order as needed
	8HW Kira Gilman	307-330-3186	A/G Secondary		167.9500	Cody Dispatch: 307-578-5740
	5PT Gabe Vera	505-780-1320	Deck		163.1000	
	2AC Jerrid Silva	406-381-5963				
	5AJ Eli Ramirez	530-251-7871				

9. HELICOPTERS/UAS

FAA N#	TY	MAKE/ MODEL	BASE	AVAIL	REMARKS	FAA N#	TY	MAKE/ MODEL	BASE	AVAIL	REMARKS
N328HW	3	AS-350 B3	KSHR	0900	Recon, H2O	N172AC	1	Sky Crane S64	KCOD	0900	Tanked
N205PT	2	Bell 205 A1++	KSHR	0900	H2O, Cargo, Shuttle	N405AJ	1	CH-47D	KSHR	0900	Tanked

10. Aviation Location Summary, See current Maps for additional locations

FC Point Type	Elevation	Latitude	Longitude
Staging Area	7,690	44 50.163N	107 30.227W

Elk Fire Logistic Message 9/30/2029

Meals:

- Dinner service will be provided with serving hours between 1900 and 2030 at the Base Camp located at Burgess Ranger Station

Showers:

- There are showers at the Burgess Ranger Station, please contact BCMG Tera Thomas for details.

Supplies:

- Any supply needs shall be submitted to BCMG, Tera Thomas.

Make sure tents are secured and can withstand strong wind gusts over the next few days.

Finance

Please send all pay and cost documents to

2024.elk.finance@firenet.gov

with your RO# in the subject line.

You should receive a confirmation reply if it is your first email to us that day. If you do not, please check the address used before calling us.

Checking in – send Resource order, contract agreement, crew manifest, casual hire form, travel time, or other required documents to the finance email address. Include your on-fire cell phone number on your first shift ticket or CTR so we can call/text if there are questions.

Submit Shift Tickets or CTRs every day or two.

If you have any Finance questions, please email and we will answer as soon as possible.

Plans

Remote check-in can be found on the linktree website, please use the QR code on the front of the IAP to check-in. It's even a shorter form, try it.

Any questions, comments or concerns can be submitted to for review.

2024.elk.plans@firenet.gov

IAP Map

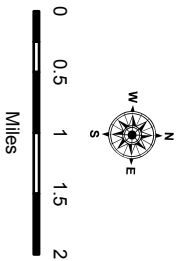
ELK

WY-BHF-000399

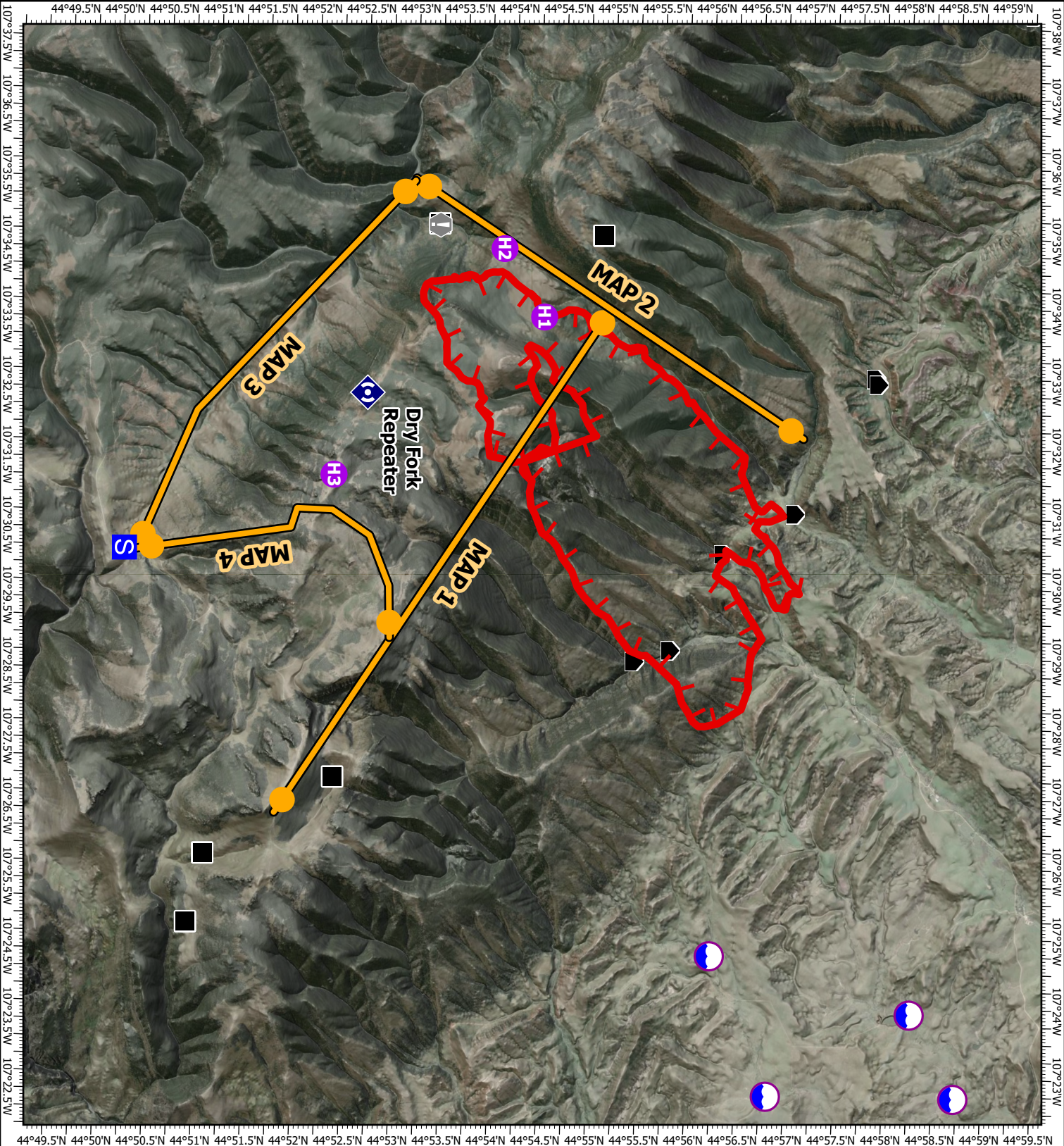
September 30, 2024

6,312 acres at 9/29/2024 @ 1703 MST

- Residence
- cow camp
- Helispot
- Staging Area
- Value at Risk
- Repeater
- Dip Site
- Management Action Point
- Uncontained



1:100,000 | Job: 9/29/2024_1915
Acres from IR and GPS
North American 1983 Datum, Laitlong Grid



MEDICAL PLAN (ICS 206 WF)

Controlled Unclassified Information//Basic

Medical Incident Report

FOR A NON-EMERGENCY INCIDENT, WORK THROUGH CHAIN OF COMMAND TO REPORT AND TRANSPORT INJURED PERSONNEL AS NECESSARY.

FOR A MEDICAL EMERGENCY: IDENTIFY ON-SCENE INCIDENT COMMANDER BY NAME AND POSITION AND ANNOUNCE "MEDICAL EMERGENCY" TO INITIATE RESPONSE FROM IMT COMMUNICATIONS/DISPATCH.

Use the following items to communicate situation to communications/dispatch.

1. CONTACT COMMUNICATIONS / DISPATCH (Verify correct frequency prior to starting report)

Ex: "Communications, Div. Alpha. Stand-by for Emergency Traffic."

2. INCIDENT STATUS: Provide incident summary (including number of patients) and command structure.

Ex: "Communications, I have a Red priority patient, unconscious, struck by a falling tree. Requesting air ambulance to Forest Road 1 at (Lat./Long.) This will be the Trout Meadow Medical, IC is TFLD Jones. EMT Smith is providing medical care."

Severity of Emergency / Transport Priority	<input type="checkbox"/> RED / PRIORITY 1 Life or limb threatening injury or illness. Evacuation need is IMMEDIATE <i>Ex: Unconscious, difficulty breathing, bleeding severely, 2° – 3° burns more than 4 palm sizes, heat stroke, disoriented.</i> <input type="checkbox"/> YELLOW / PRIORITY 2 Serious Injury or illness. Evacuation may be DELAYED if necessary. <i>Ex: Significant trauma, unable to walk, 2° – 3° burns not more than 1-3 palm sizes.</i> <input type="checkbox"/> GREEN / PRIORITY 3 Minor Injury or illness. Non-Emergency transport <i>Ex: Sprains, strains, minor heat-related illness.</i>	
Nature of Injury or Illness & Mechanism of Injury		<i>Brief Summary of Injury or Illness (Ex: Unconscious, Struck by Falling Tree)</i>
Evacuation Request		<i>Air Ambulance / Short Haul/Hoist Ground Ambulance / Other</i>
Patient Location		<i>Descriptive Location & Lat. / Long. (WGS84)</i>
Incident Name		<i>Geographic Name + Medical (Ex: Trout Meadow Medical)</i>
On-Scene Incident Commander		<i>Name of on-scene IC of Incident within an Incident (Ex: TFLD Jones)</i>
Patient Care		<i>Name of Care Provider (Ex: EMT Smith)</i>

3. INITIAL PATIENT ASSESSMENT: Complete this section for each patient as applicable (start with the most severe patient)

Patient Assessment: See IRPG PAGE 106

Treatment:

4. EVACUATION PLAN:

Evacuation Location (if different): (Descriptive Location (drop point, intersection, etc.) or Lat. / Long.) Patient's ETA to Evacuation Location:

Helispot / Extraction Site Size and Hazards:

5. ADDITIONAL RESOURCES / EQUIPMENT NEEDS:

Example: Paramedic/EMT, crews, immobilization devices, AED, oxygen, trauma bag, IV/fluid(s), splints, rope rescue, wheeled litter, HAZMAT, extrication

6. COMMUNICATIONS: Identify State Air/Ground EMS Frequencies and Hospital Contacts as applicable

Function	Channel Name/Number	Receive (RX)	Tone/NAC *	Transmit (TX)	Tone/NAC *
COMMAND					
AIR-TO-GRND					
TACTICAL					

7. CONTINGENCY: Considerations: If primary options fail, what actions can be implemented in conjunction with primary evacuation method? Be thinking ahead..

8. ADDITIONAL INFORMATION: Updates/Changes, etc.

REMEMBER: Confirm ETAs of resources ordered. Act according to your level of training. Be Alert. Keep Calm. Think Clearly. Act Decisively.