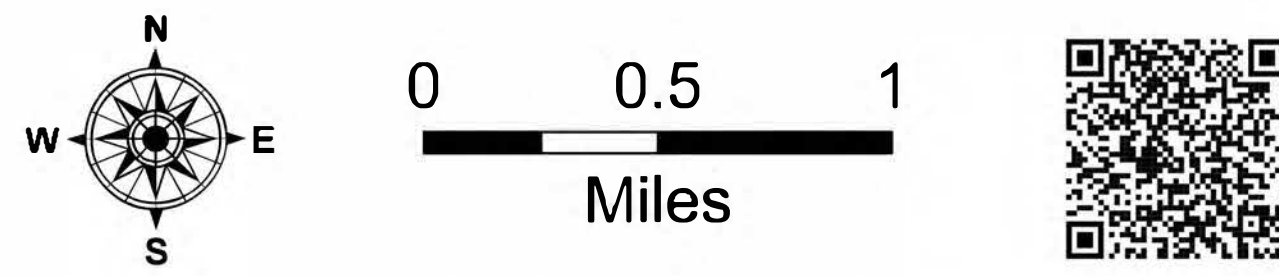


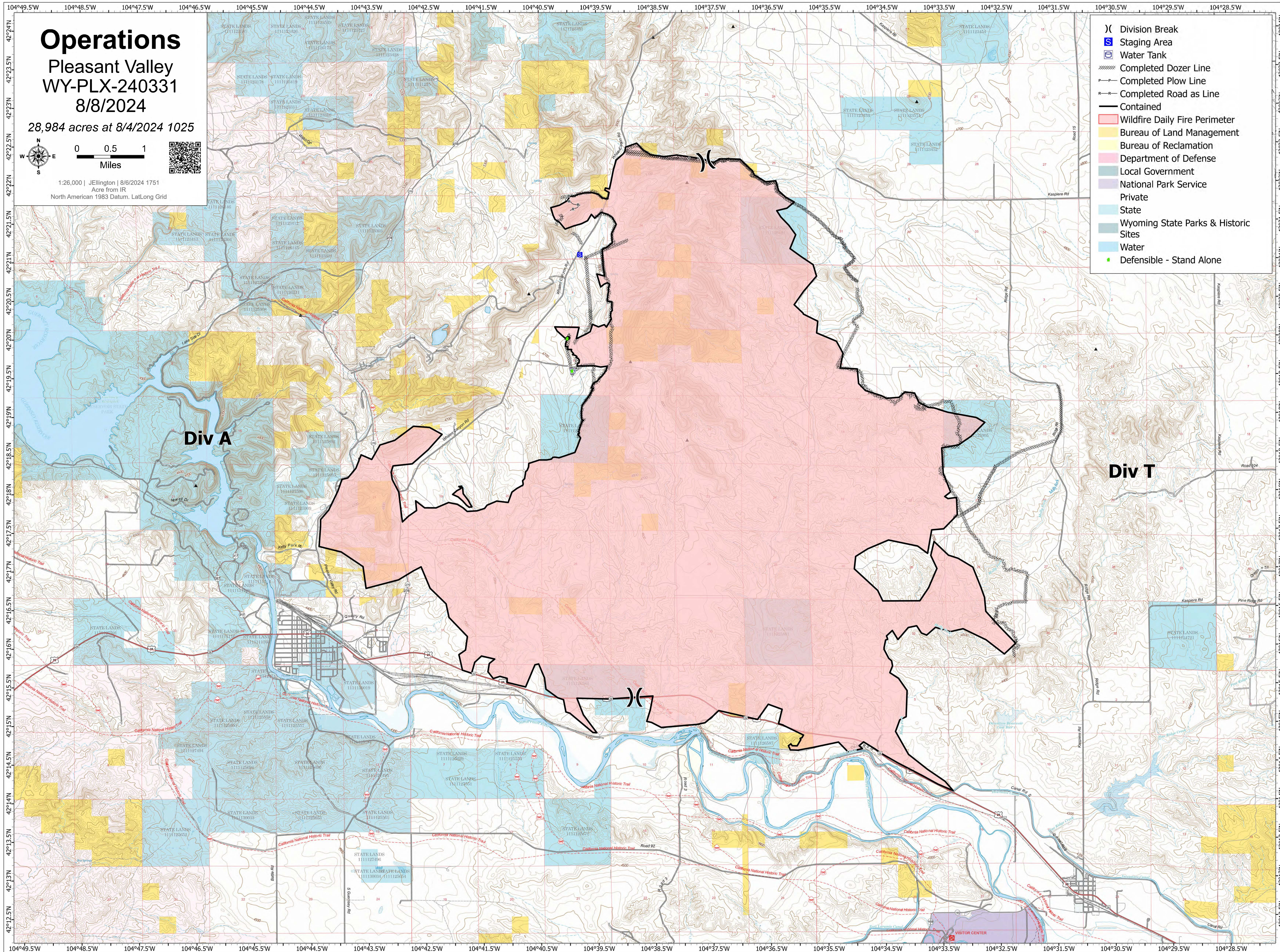
Operations

Pleasant Valley
WY-PLX-240331
8/8/2024

28,984 acres at 8/4/2024 1025



1:26,000 | Jellington | 8/6/2024 1751
Acre from IR
North American 1983 Datum, LatLong Grid



- () Division Break
- 📍 Staging Area
- 🚰 Water Tank
- 🚧 Completed Dozer Line
- 🛤️ Completed Plow Line
- 🛣️ Completed Road as Line
- Contained
- 🔴 Wildfire Daily Fire Perimeter
- 🟡 Bureau of Land Management
- 🟠 Bureau of Reclamation
- 🟡 Department of Defense
- 🟢 Local Government
- 🟣 National Park Service
- ⬜ Private
- 🟦 State
- 🟦 Wyoming State Parks & Historic Sites
- 🟦 Water
- 🟢 Defensible - Stand Alone

Div A

Div T