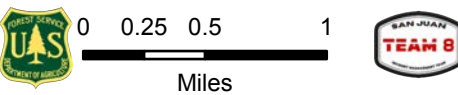


Air Operations

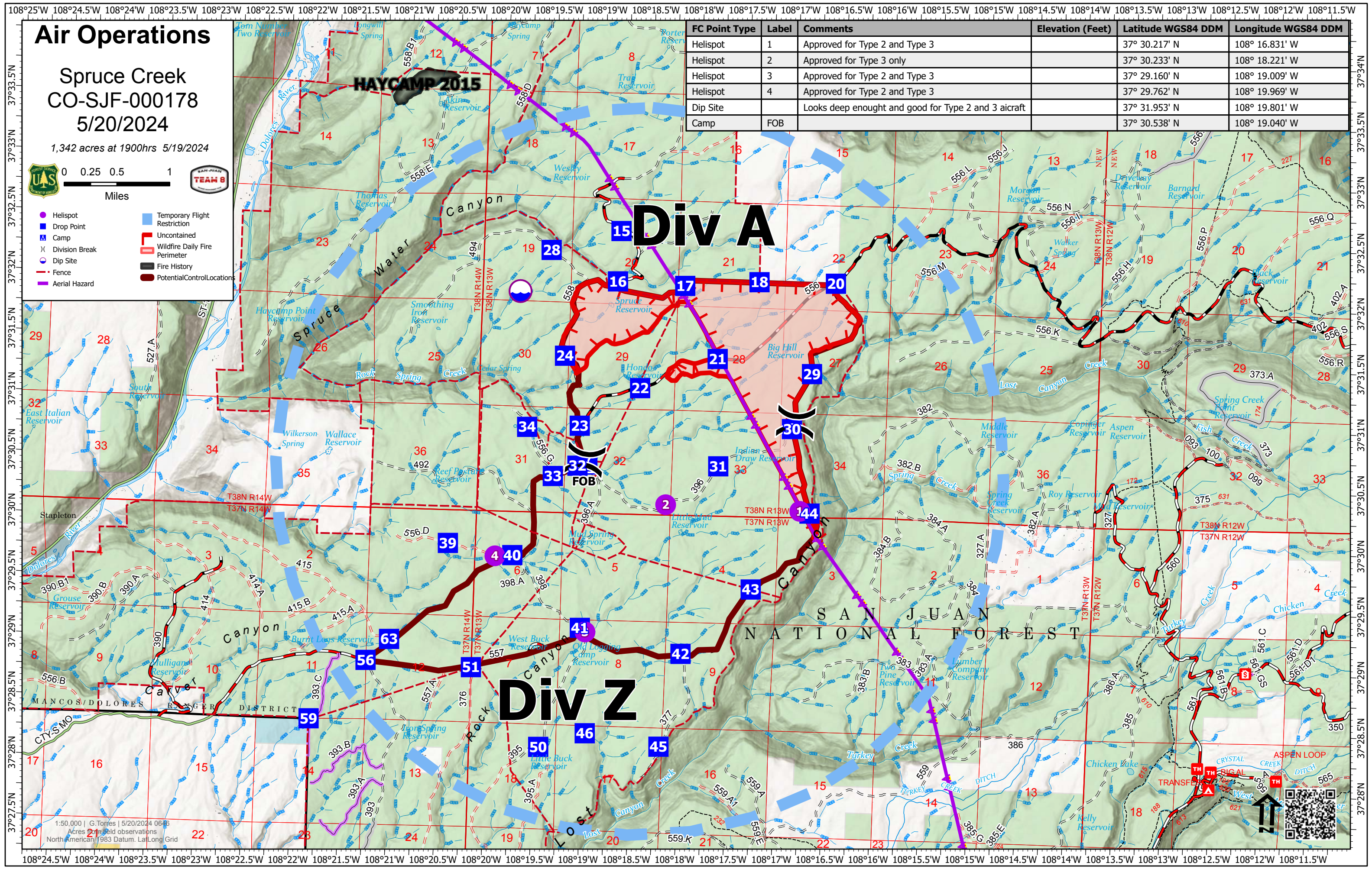
Spruce Creek
CO-SJF-000178
5/20/2024

1,342 acres at 1900hrs 5/19/2024



- Helispot
- Drop Point
- ▲ Camp
- X Division Break
- Dip Site
- Fence
- Aerial Hazard
- ▭ Temporary Flight Restriction
- ▭ Uncontained
- ▭ Wildfire Daily Fire Perimeter
- ▭ Fire History
- ▭ Potential Control Location

FC Point Type	Label	Comments	Elevation (Feet)	Latitude WGS84 DDM	Longitude WGS84 DDM
Helispot	1	Approved for Type 2 and Type 3		37° 30.217' N	108° 16.831' W
Helispot	2	Approved for Type 3 only		37° 30.233' N	108° 18.221' W
Helispot	3	Approved for Type 2 and Type 3		37° 29.160' N	108° 19.009' W
Helispot	4	Approved for Type 2 and Type 3		37° 29.762' N	108° 19.969' W
Dip Site		Looks deep enough and good for Type 2 and 3 aircraft		37° 31.953' N	108° 19.801' W
Camp	FOB			37° 30.538' N	108° 19.040' W



1:50,000 | G. Torres | 5/20/2024 06:43
Acres from field observations
North American 1983 Datum, Lat/Long Grid

