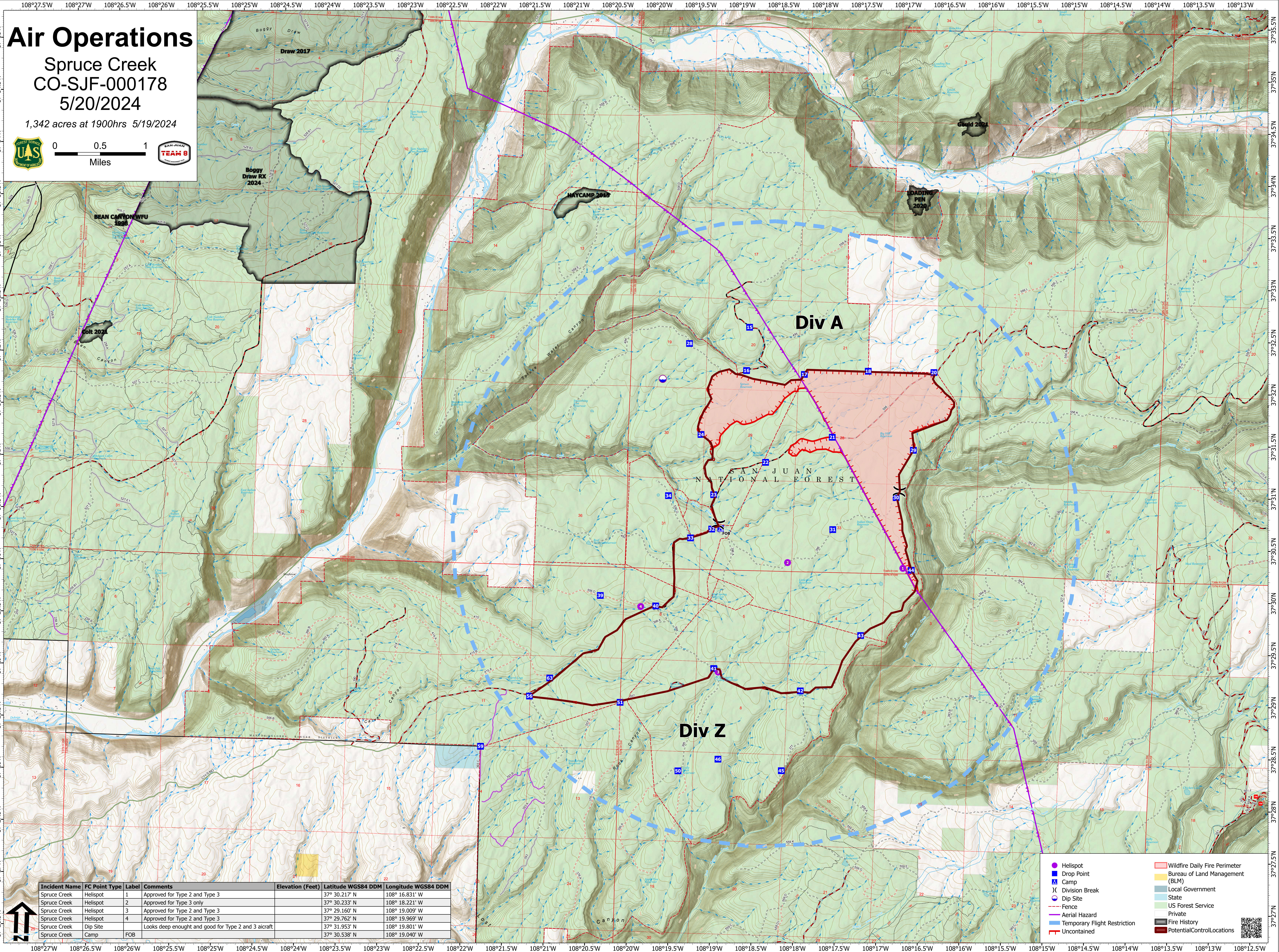
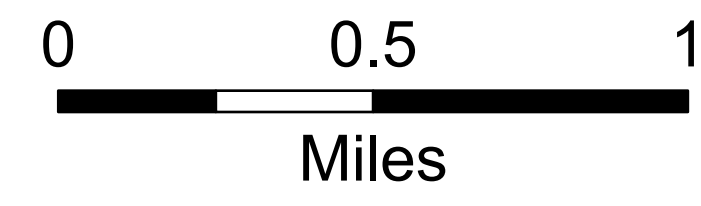


Air Operations

Spruce Creek
CO-SJF-000178
5/20/2024

1,342 acres at 1900hrs 5/19/2024



Incident Name	FC Point Type	Label	Comments	Elevation (Feet)	Latitude WGS84 DDM	Longitude WGS84 DDM
Spruce Creek	Helispot	1	Approved for Type 2 and Type 3		37° 30.217' N	108° 16.831' W
Spruce Creek	Helispot	2	Approved for Type 3 only		37° 30.233' N	108° 18.221' W
Spruce Creek	Helispot	3	Approved for Type 2 and Type 3		37° 29.160' N	108° 19.009' W
Spruce Creek	Helispot	4	Approved for Type 2 and Type 3		37° 29.762' N	108° 19.969' W
Spruce Creek	Dip Site		Looks deep enough and good for Type 2 and 3 aircraft		37° 31.953' N	108° 19.801' W
Spruce Creek	Camp	FOB			37° 30.538' N	108° 19.040' W

- Helispot
- Drop Point
- ▲ Camp
- ⊗ Division Break
- Dip Site
- Fence
- Aerial Hazard
- Temporary Flight Restriction
- Uncontained
- Wildfire Daily Fire Perimeter
- Bureau of Land Management (BLM)
- Local Government
- State
- US Forest Service
- Private
- Fire History
- Potential Control Locations

