

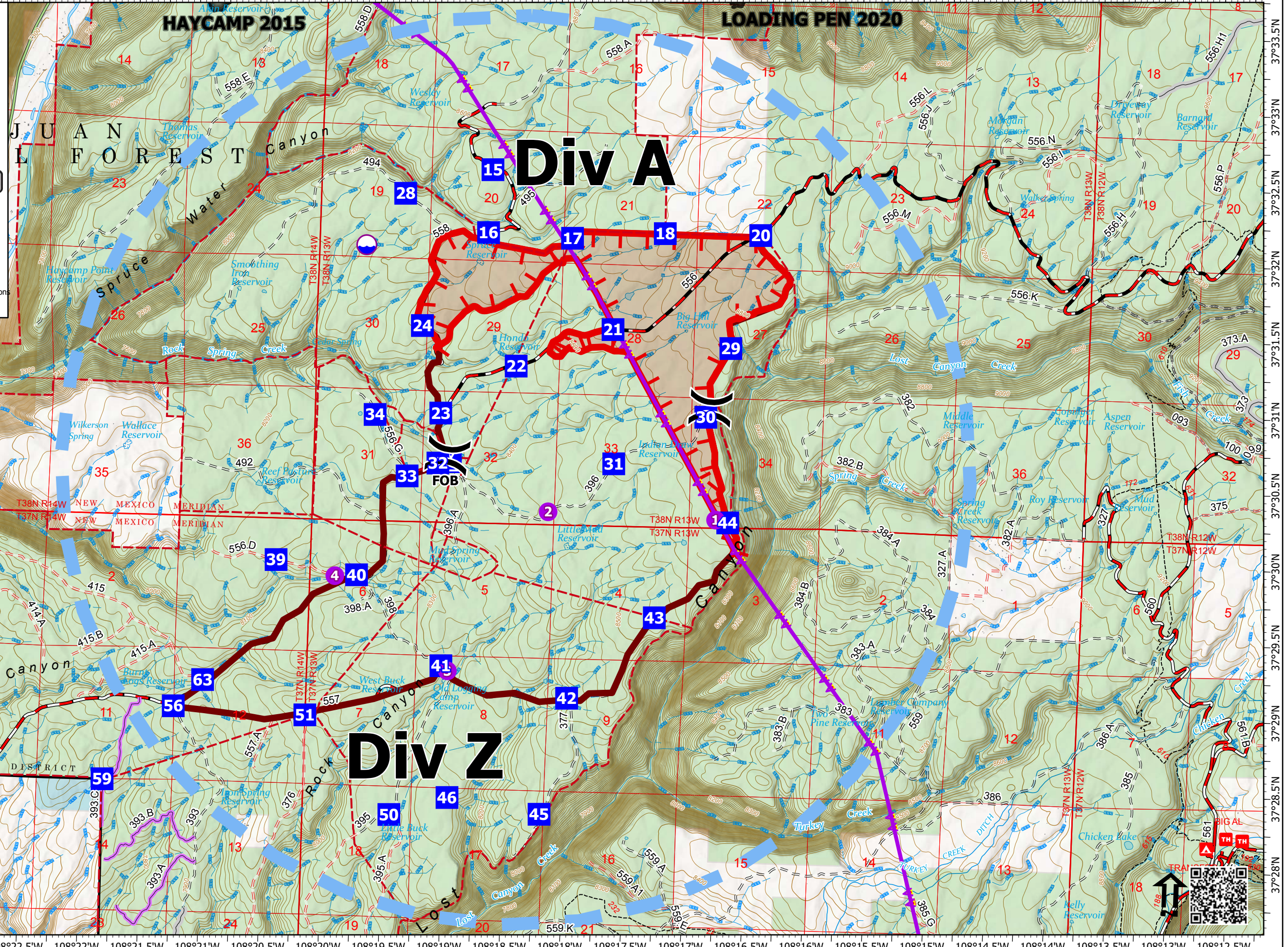
108°24.5'W 108°24'W 108°23.5'W 108°23'W 108°22.5'W 108°22'W 108°21.5'W 108°21'W 108°20.5'W 108°20'W 108°19.5'W 108°19'W 108°18.5'W 108°18'W 108°17.5'W 108°17'W 108°16.5'W 108°16'W 108°15.5'W 108°15'W 108°14.5'W 108°14'W 108°13.5'W 108°13'W 108°12.5'W

Operations

Spruce Creek
CO-SJF-000178
5/20/2024

1,342 acres at 1900hrs 5/19/2024

Helispot	Temporary Flight Restriction
Drop Point	Uncontained
Camp	Wildfire Daily Fire Perimeter
Division Break	Fire History
Dip Site	Potential Control Locations
Fence	
Aerial Hazard	



108°24.5'W 108°24'W 108°23.5'W 108°23'W 108°22.5'W 108°22'W 108°21.5'W 108°21'W 108°20.5'W 108°20'W 108°19.5'W 108°19'W 108°18.5'W 108°18'W 108°17.5'W 108°17'W 108°16.5'W 108°16'W 108°15.5'W 108°15'W 108°14.5'W 108°14'W 108°13.5'W 108°13'W 108°12.5'W