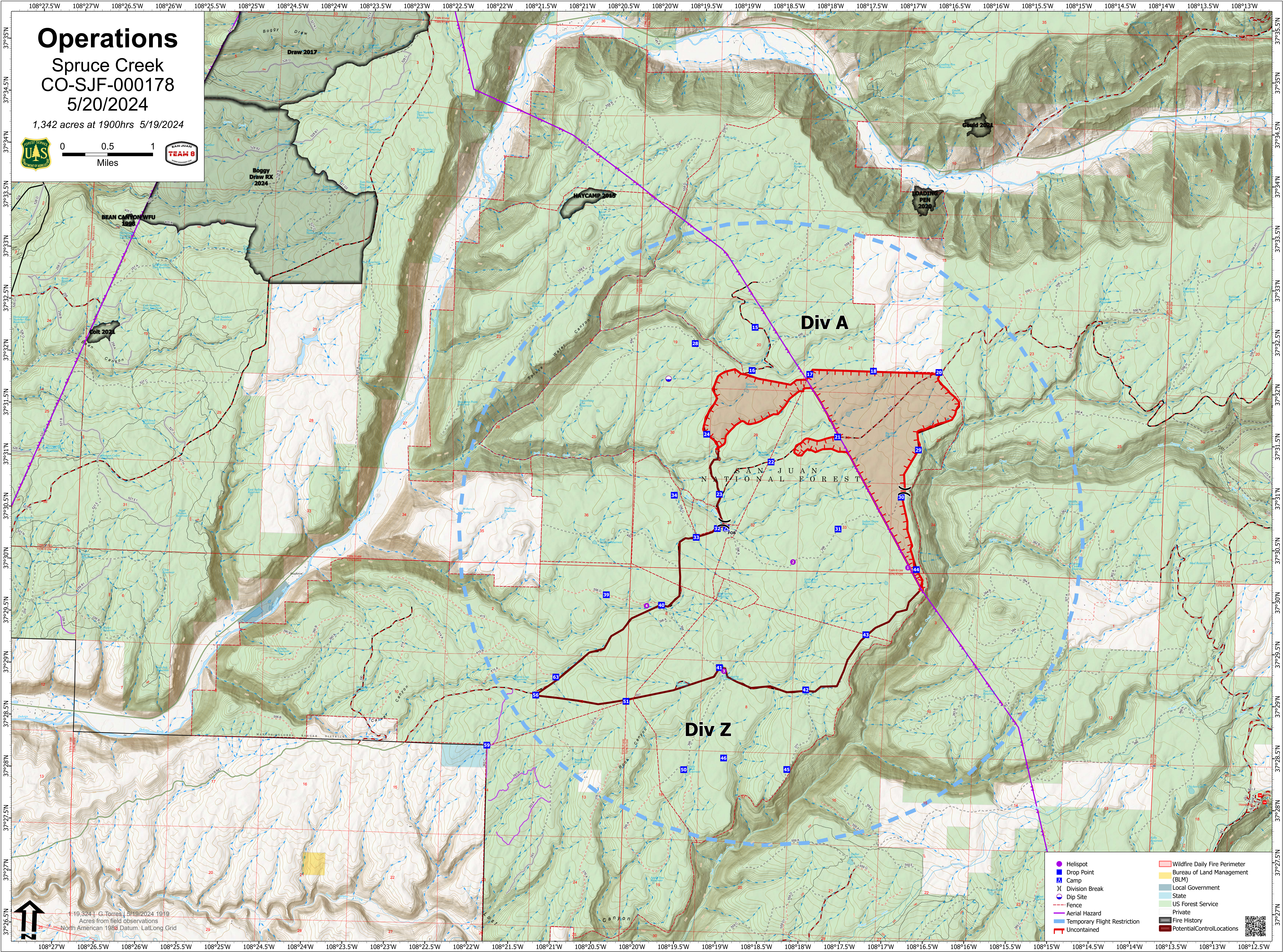
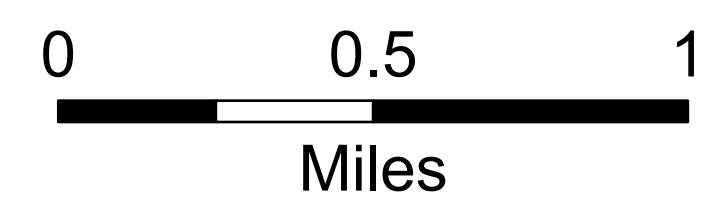


Operations

Spruce Creek
CO-SJF-000178
5/20/2024

1,342 acres at 1900hrs 5/19/2024



- Helispot
- Drop Point
- ▲ Camp
- ⌵ Division Break
- Dip Site
- Fence
- Aerial Hazard
- Temporary Flight Restriction
- Uncontained
- ▭ Wildfire Daily Fire Perimeter
- ▭ Bureau of Land Management (BLM)
- ▭ Local Government
- ▭ State
- ▭ US Forest Service
- ▭ Private
- ▭ Fire History
- ▭ Potential Control Locations

49.324 | G.Torres | 5/19/2024 19:19
Acres from field observations
North American 1983 Datum, LatLong Grid

