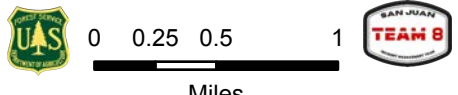


# Air Operations

## Spruce Creek CO-SJF-000178

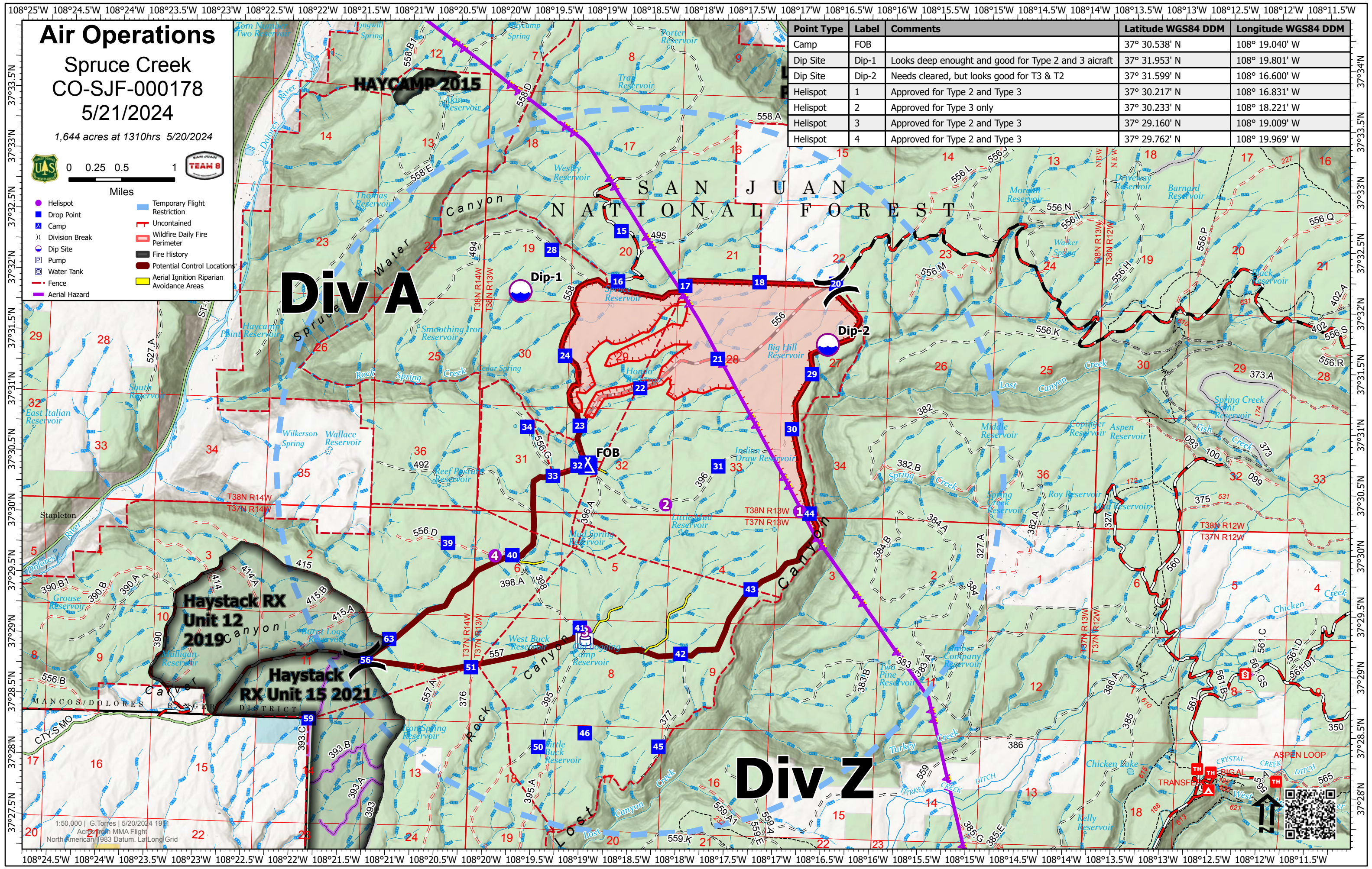
### 5/21/2024

1,644 acres at 1310hrs 5/20/2024



- Helispot
- Drop Point
- ✕ Camp
- ⌘ Division Break
- Dip Site
- ⊕ Pump
- ⊗ Water Tank
- Fence
- Aerial Hazard
- Temporary Flight Restriction
- Uncontained
- Wildfire Daily Fire Perimeter
- Fire History
- Potential Control Locations
- Aerial Ignition Riparian Avoidance Areas

Point Type	Label	Comments	Latitude WGS84 DDM	Longitude WGS84 DDM
Camp	FOB		37° 30.538' N	108° 19.040' W
Dip Site	Dip-1	Looks deep enough and good for Type 2 and 3 aircraft	37° 31.953' N	108° 19.801' W
Dip Site	Dip-2	Needs cleared, but looks good for T3 & T2	37° 31.599' N	108° 16.600' W
Helispot	1	Approved for Type 2 and Type 3	37° 30.217' N	108° 16.831' W
Helispot	2	Approved for Type 3 only	37° 30.233' N	108° 18.221' W
Helispot	3	Approved for Type 2 and Type 3	37° 29.160' N	108° 19.009' W
Helispot	4	Approved for Type 2 and Type 3	37° 29.762' N	108° 19.969' W



1:50,000 | G. Torres | 5/20/2024 19:31  
 Acres from MMA Flight  
 North American 1983 Datum, Lat/Long Grid

