

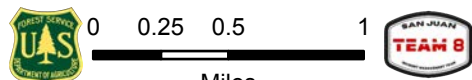
108°24.5'W 108°24'W 108°23.5'W 108°23'W 108°22.5'W 108°22'W 108°21.5'W 108°21'W 108°20.5'W 108°20'W 108°19.5'W 108°19'W 108°18.5'W 108°18'W 108°17.5'W 108°17'W 108°16.5'W 108°16'W 108°15.5'W 108°15'W 108°14.5'W 108°14'W 108°13.5'W 108°13'W 108°12.5'W

Operations

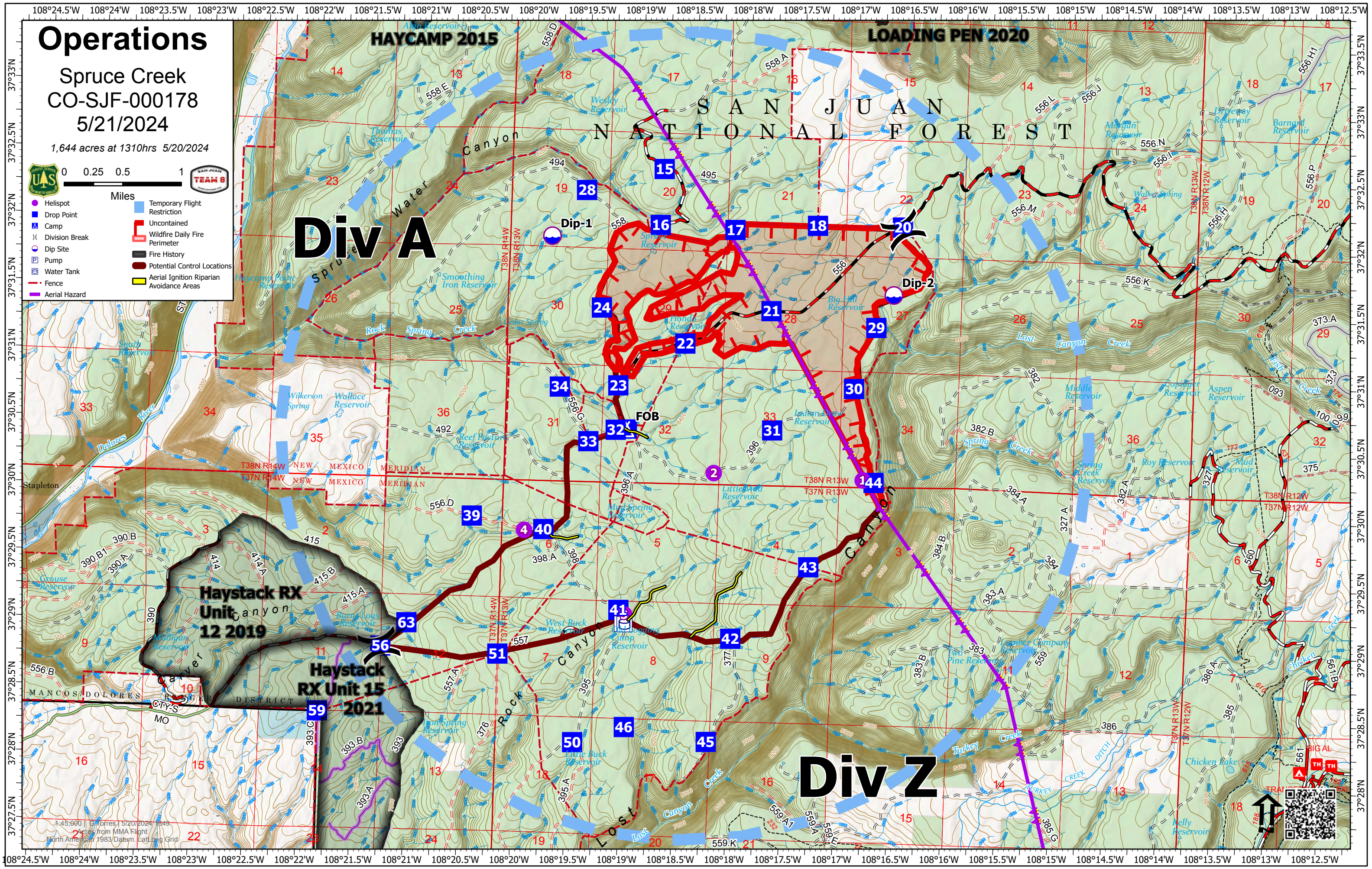
Spruce Creek
CO-SJF-000178

5/21/2024

1,644 acres at 1310hrs 5/20/2024



- Miles
- Helispot
 - Drop Point
 - Camp
 - Division Break
 - Dip Site
 - Pump
 - Water Tank
 - Fence
 - Aerial Hazard
 - Temporary Flight Restriction
 - Uncontained Wildfire Daily Fire Perimeter
 - Fire History
 - Potential Control Locations
 - Aerial Ignition Riparian Avoidance Areas



Div A

Div Z

Haystack RX Unit 12 2019

Haystack RX Unit 15 2021

1:45,000
1,644 acres at 1310hrs 5/20/2024
North American 1983 Datum, Lat/Long Grid

