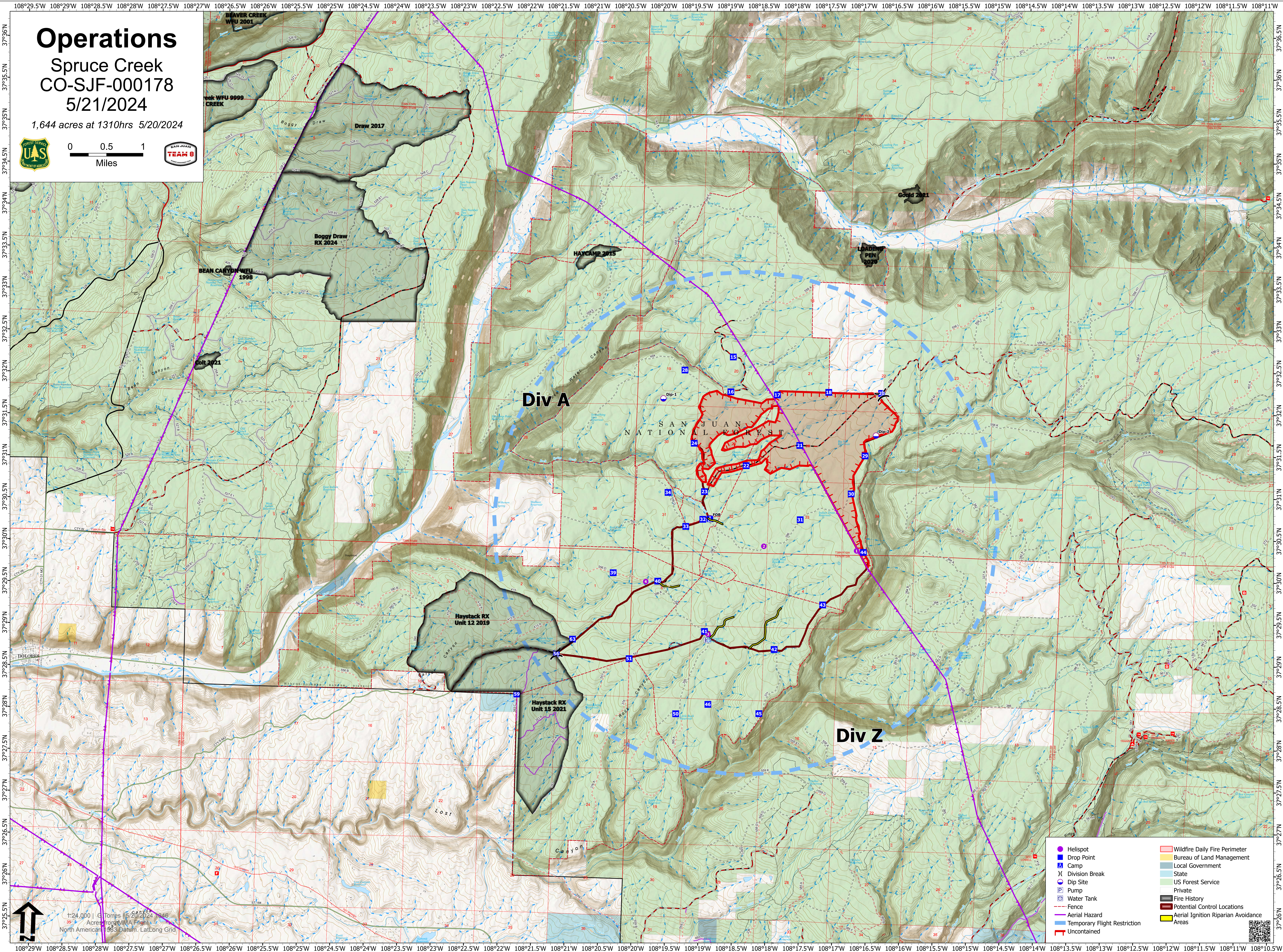
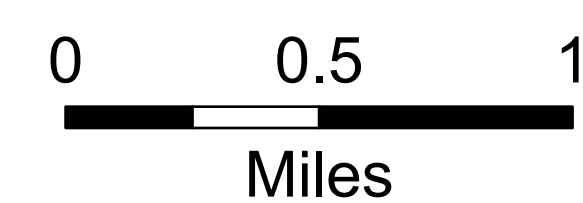


Operations

Spruce Creek
CO-SJF-000178
5/21/2024

1,644 acres at 1310hrs 5/20/2024



- Helispot
- Drop Point
- Camp
- ⌵ Division Break
- Dip Site
- ⊕ Pump
- ⊕ Water Tank
- Fence
- Aerial Hazard
- Temporary Flight Restriction
- Uncontained
- ▭ Wildfire Daily Fire Perimeter
- ▭ Bureau of Land Management
- ▭ Local Government
- ▭ State
- ▭ US Forest Service
- ▭ Private
- ▭ Fire History
- ▭ Potential Control Locations
- ▭ Aerial Ignition Riparian Avoidance Areas

1:24,000 | G. Torres | 5/20/2024 10:16
38 Acres from MMA Flight
North American 1983 Datum, LatLong Grid

