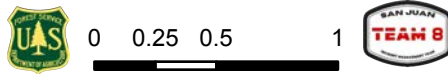


# Air Operations

Spruce Creek  
CO-SJF-000178

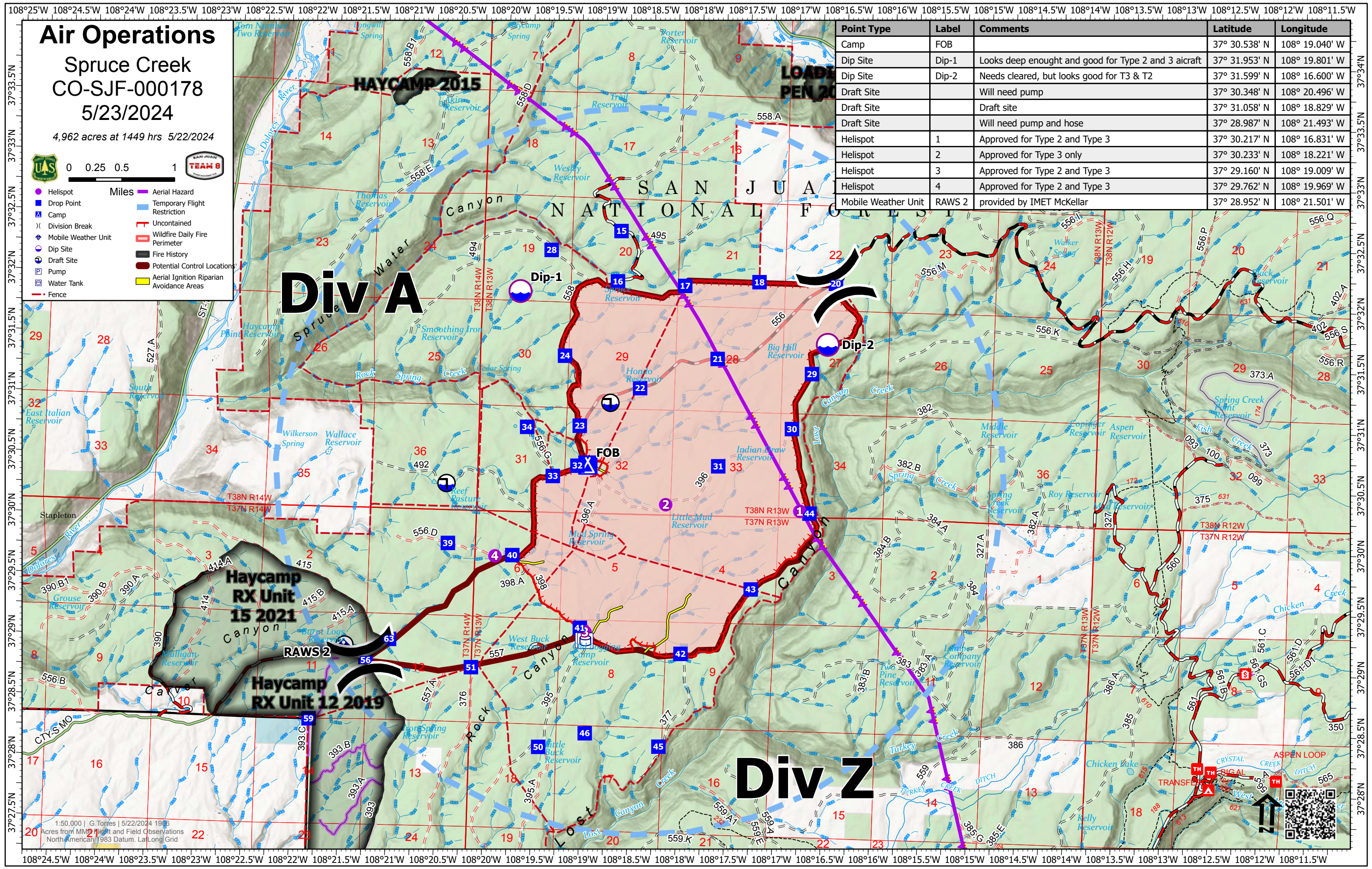
5/23/2024

4,962 acres at 1449 hrs 5/22/2024



- Helispot
- Drop Point
- ✕ Camp
- ⋈ Division Break
- ⬇ Mobile Weather Unit
- ⊕ Dip Site
- ⊖ Draft Site
- ⊗ Pump
- ⊙ Water Tank
- Fence
- Aerial Hazard
- Temporary Flight Restriction
- Uncontained
- Wildfire Daily Fire Perimeter
- Fire History
- Potential Control Locations
- Aerial Ignition Riparian Avoidance Areas

Point Type	Label	Comments	Latitude	Longitude
Camp	FOB		37° 30.538' N	108° 19.040' W
Dip Site	Dip-1	Looks deep enough and good for Type 2 and 3 aircraft	37° 31.953' N	108° 19.801' W
Dip Site	Dip-2	Needs cleared, but looks good for T3 & T2	37° 31.599' N	108° 16.600' W
Draft Site		Will need pump	37° 30.348' N	108° 20.496' W
Draft Site		Draft site	37° 31.058' N	108° 18.829' W
Draft Site		Will need pump and hose	37° 28.987' N	108° 21.493' W
Helispot	1	Approved for Type 2 and Type 3	37° 30.217' N	108° 16.831' W
Helispot	2	Approved for Type 3 only	37° 30.233' N	108° 18.221' W
Helispot	3	Approved for Type 2 and Type 3	37° 29.160' N	108° 19.009' W
Helispot	4	Approved for Type 2 and Type 3	37° 29.762' N	108° 19.969' W
Mobile Weather Unit	RAWS 2	provided by IMET McKellar	37° 28.952' N	108° 21.501' W



1:50,000 | G.Torres | 5/22/2024 19:03  
Acres from MM2 Flight and Field Observations  
North American 1983 Datum, Lat/Long Grid

