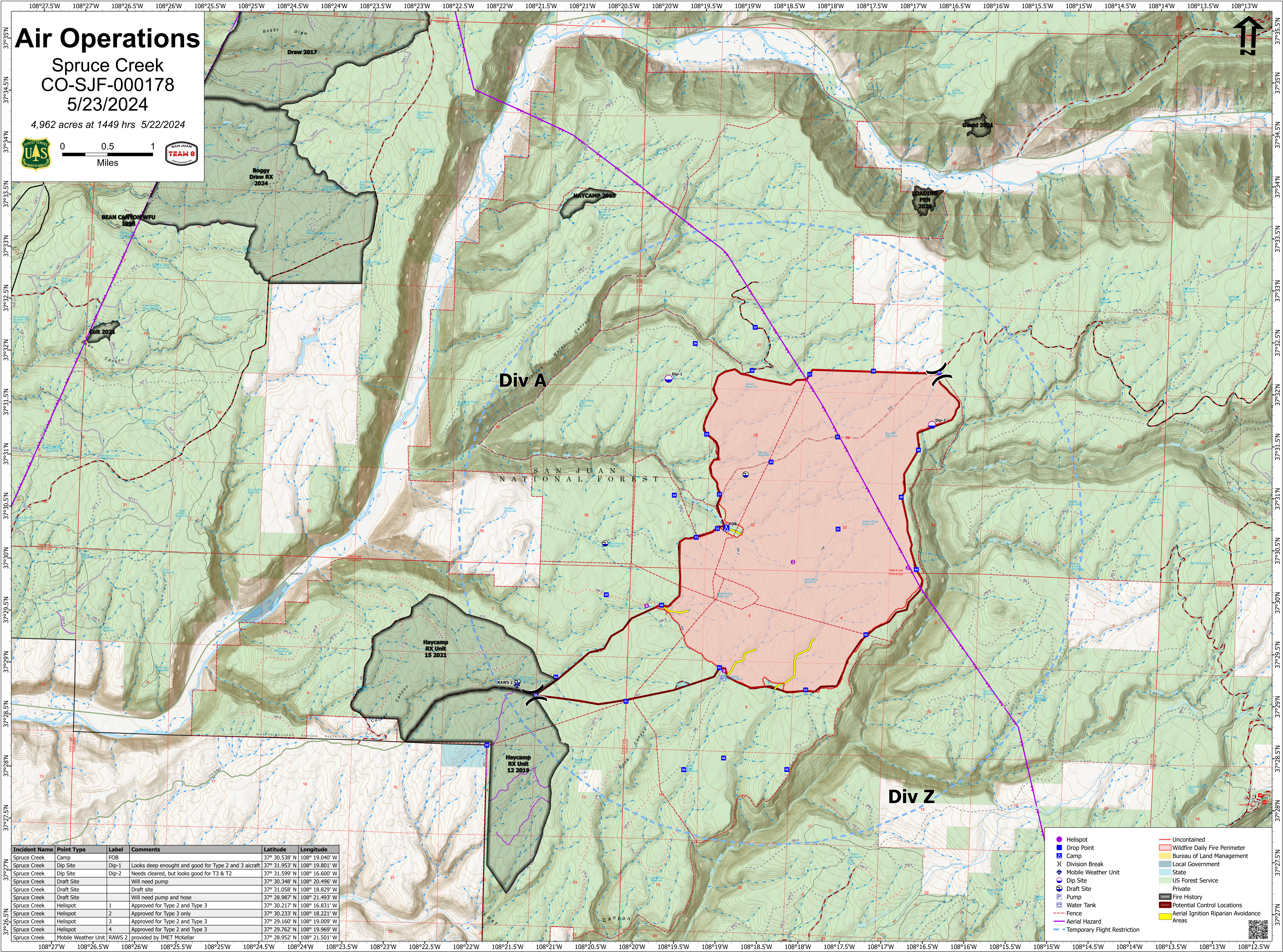
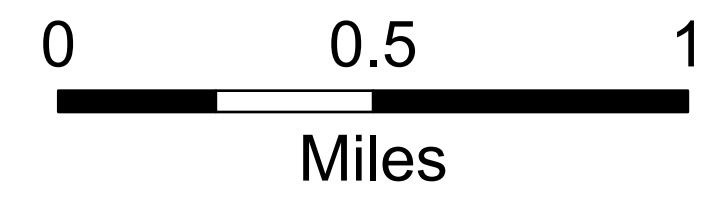


# Air Operations

Spruce Creek  
CO-SJF-000178  
5/23/2024

4,962 acres at 1449 hrs 5/22/2024



Incident Name	Point Type	Label	Comments	Latitude	Longitude
Spruce Creek	Camp	FOB		37° 30.538' N	108° 19.040' W
Spruce Creek	Dip Site	Dip-1	Looks deep enough and good for Type 2 and 3 aircraft	37° 31.953' N	108° 19.801' W
Spruce Creek	Dip Site	Dip-2	Needs cleared, but looks good for T3 & T2	37° 31.599' N	108° 16.600' W
Spruce Creek	Draft Site		Will need pump	37° 30.348' N	108° 20.496' W
Spruce Creek	Draft Site		Draft site	37° 31.058' N	108° 18.829' W
Spruce Creek	Draft Site		Will need pump and hose	37° 28.987' N	108° 21.493' W
Spruce Creek	Helispot	1	Approved for Type 2 and Type 3	37° 30.217' N	108° 16.831' W
Spruce Creek	Helispot	2	Approved for Type 3 only	37° 30.233' N	108° 18.221' W
Spruce Creek	Helispot	3	Approved for Type 2 and Type 3	37° 29.160' N	108° 19.009' W
Spruce Creek	Helispot	4	Approved for Type 2 and Type 3	37° 29.762' N	108° 19.969' W
Spruce Creek	Mobile Weather Unit	RAWS 2	provided by IMET McKellar	37° 28.952' N	108° 21.501' W

- Helispot
- Drop Point
- Camp
- Division Break
- Mobile Weather Unit
- Dip Site
- Draft Site
- Pump
- Water Tank
- Fence
- Aerial Hazard
- Temporary Flight Restriction
- Uncontained
- Wildfire Daily Fire Perimeter
- Bureau of Land Management
- Local Government
- State
- US Forest Service
- Private
- Fire History
- Potential Control Locations
- Aerial Ignition Riparian Avoidance Areas

