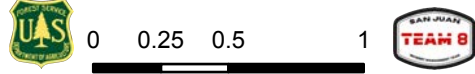


108°24.5'W 108°24'W 108°23.5'W 108°23'W 108°22.5'W 108°22'W 108°21.5'W 108°21'W 108°20.5'W 108°20'W 108°19.5'W 108°19'W 108°18.5'W 108°18'W 108°17.5'W 108°17'W 108°16.5'W 108°16'W 108°15.5'W 108°15'W 108°14.5'W 108°14'W 108°13.5'W 108°13'W 108°12.5'W

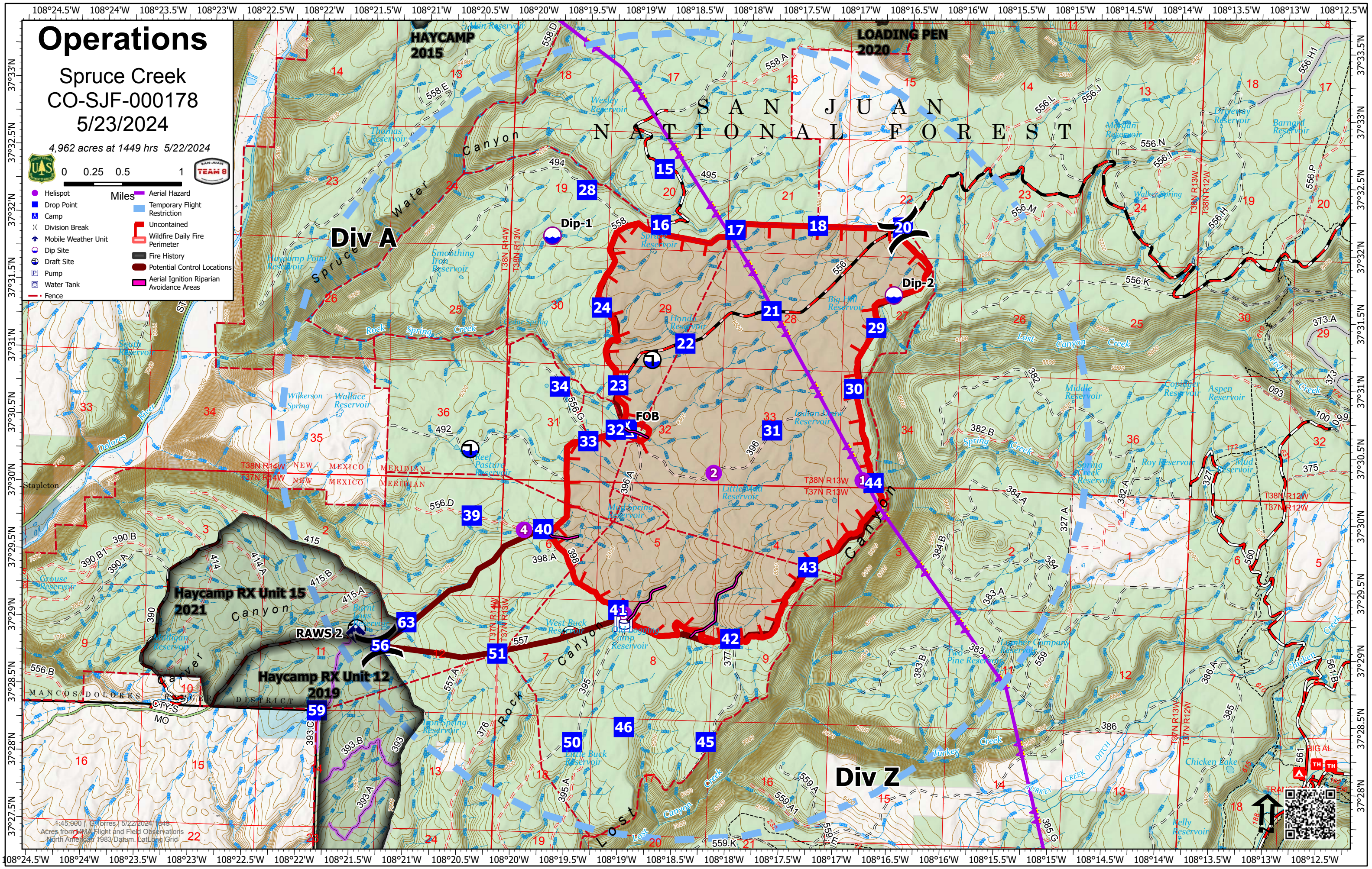
Operations

Spruce Creek
CO-SJF-000178
5/23/2024

4,962 acres at 1449 hrs 5/22/2024



- Miles 0 0.25 0.5 1
- Helispot
 - Drop Point
 - ▲ Camp
 - ⌋ Division Break
 - Dip Site
 - ⊕ Draft Site
 - ⊞ Pump
 - ⊞ Water Tank
 - Fence
 - Aerial Hazard
 - Temporary Flight Restriction
 - Uncontained
 - Wildfire Daily Fire Perimeter
 - Fire History
 - Potential Control Locations
 - Aerial Ignition Riparian Avoidance Areas



1:45,000 (Color) 5/22/2024 1:43
Acres from 1:100,000 Flight and Field Observations
North American 1983 Datum, Lat/Long Grid

108°24.5'W 108°24'W 108°23.5'W 108°23'W 108°22.5'W 108°22'W 108°21.5'W 108°21'W 108°20.5'W 108°20'W 108°19.5'W 108°19'W 108°18.5'W 108°18'W 108°17.5'W 108°17'W 108°16.5'W 108°16'W 108°15.5'W 108°15'W 108°14.5'W 108°14'W 108°13.5'W 108°13'W 108°12.5'W