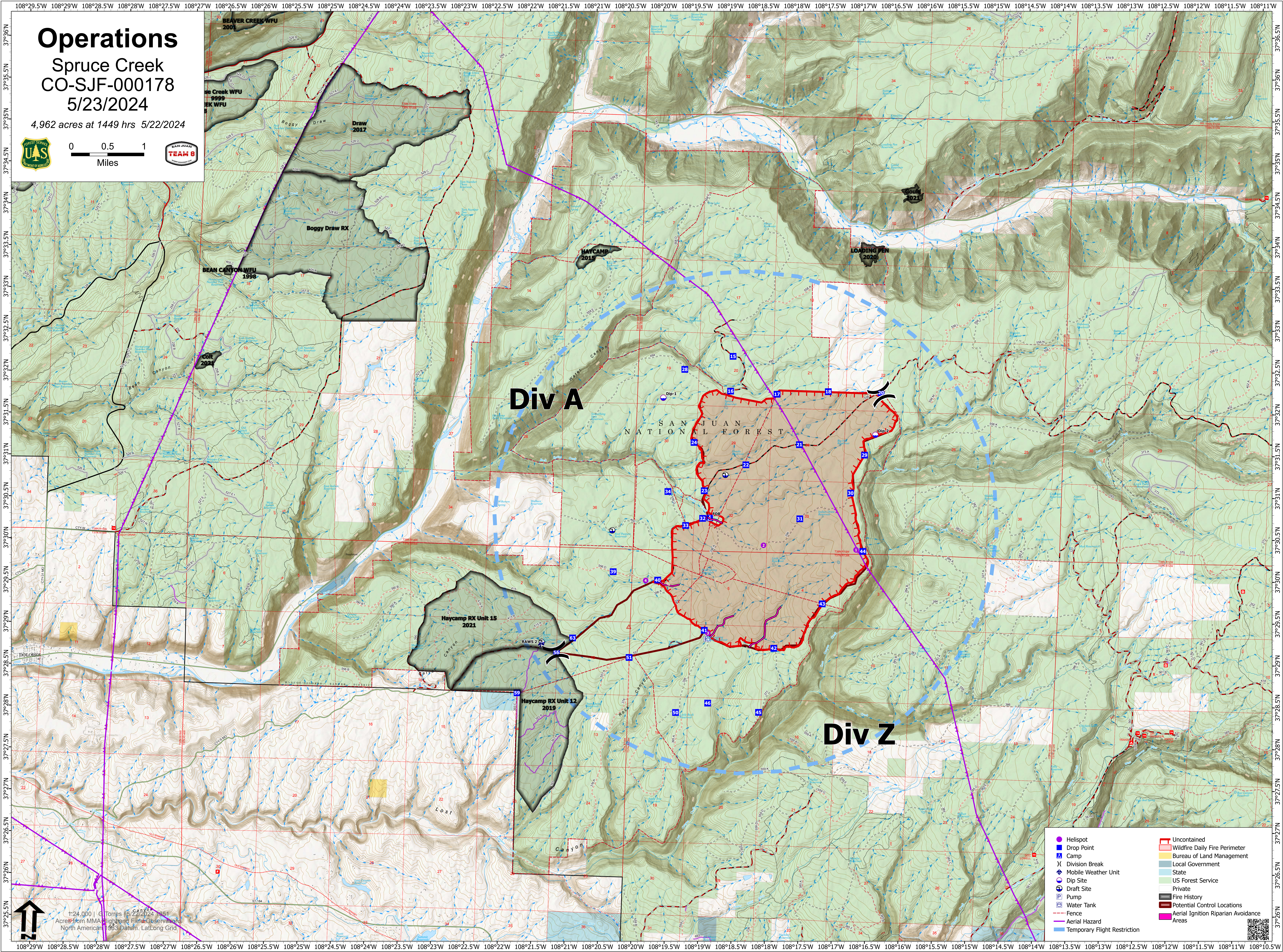
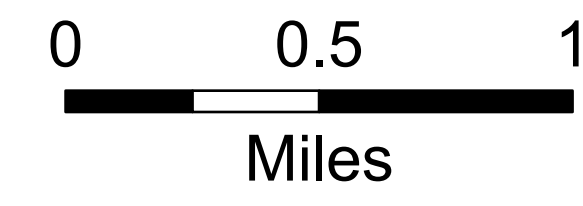


Operations

Spruce Creek
CO-SJF-000178

5/23/2024

4,962 acres at 1449 hrs 5/22/2024



Div A

Div Z

SAN JUAN NATIONAL FOREST

- Helispot
- Drop Point
- ⊗ Camp
- ⌵ Division Break
- ⊕ Mobile Weather Unit
- ⊙ Dip Site
- ⊕ Draft Site
- ⊕ Pump
- ⊕ Water Tank
- Fence
- Aerial Hazard
- Temporary Flight Restriction
- Uncontained
- Wildfire Daily Fire Perimeter
- Bureau of Land Management
- Local Government
- State
- US Forest Service
- Private
- Fire History
- Potential Control Locations
- Aerial Ignition Riparian Avoidance Areas

1:24,000 | G. Torres | 5/22/2024 16:51
Acres from MMA High-Trend Field Observations
North American 1983 Datum, LatLong Grid

