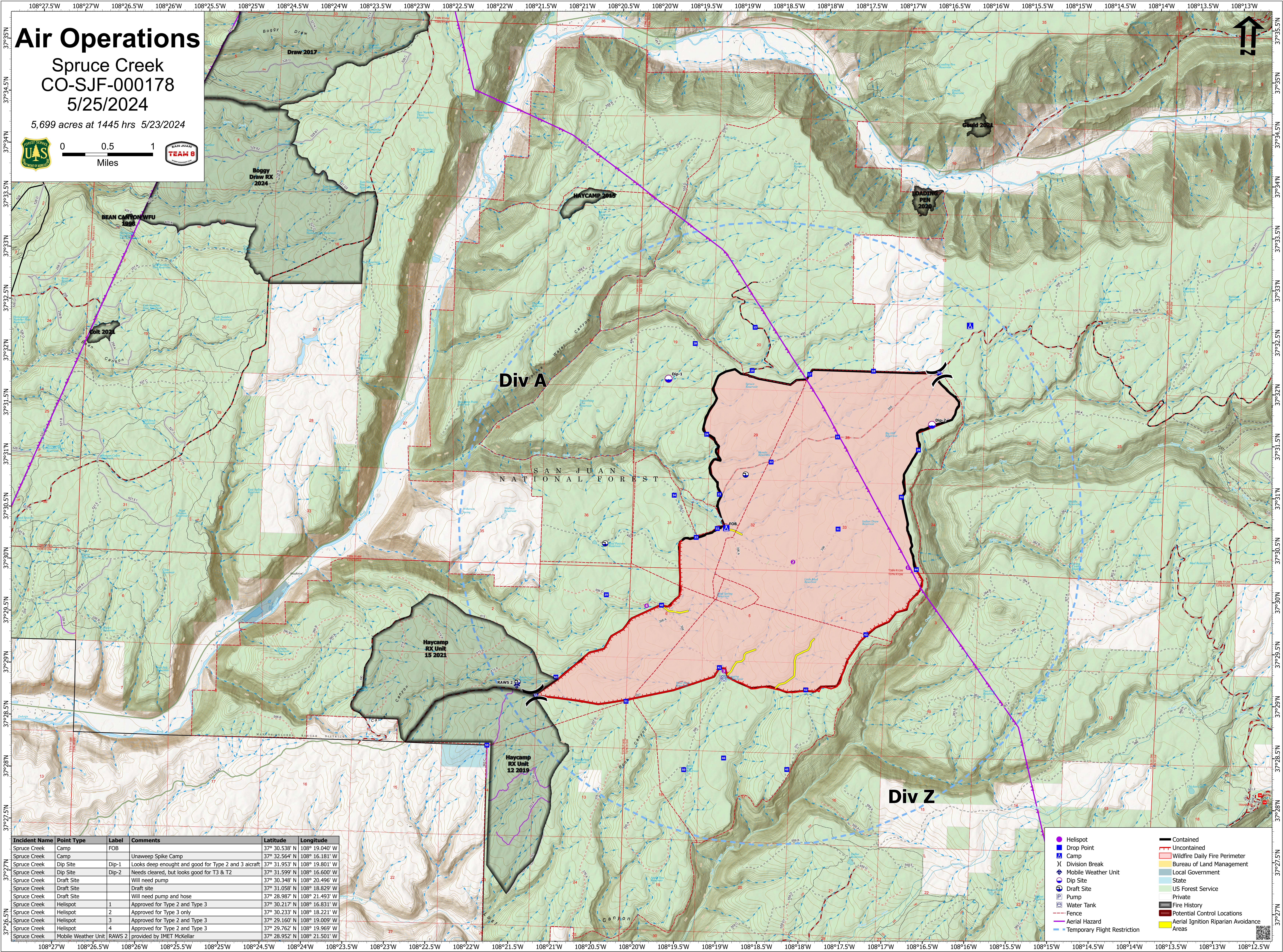
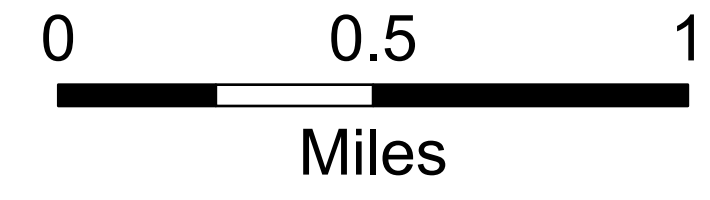


# Air Operations

Spruce Creek  
CO-SJF-000178  
5/25/2024

5,699 acres at 1445 hrs 5/23/2024



Incident Name	Point Type	Label	Comments	Latitude	Longitude
Spruce Creek	Camp	FOB		37° 30.538' N	108° 19.040' W
Spruce Creek	Camp	Unweep Spike Camp		37° 32.564' N	108° 16.181' W
Spruce Creek	Dip Site	Dip-1	Looks deep enough and good for Type 2 and 3 aircraft	37° 31.953' N	108° 19.801' W
Spruce Creek	Dip Site	Dip-2	Needs cleared, but looks good for T3 & T2	37° 31.599' N	108° 16.600' W
Spruce Creek	Draft Site		Will need pump	37° 30.348' N	108° 20.496' W
Spruce Creek	Draft Site		Draft site	37° 31.058' N	108° 18.829' W
Spruce Creek	Draft Site		Will need pump and hose	37° 28.987' N	108° 21.493' W
Spruce Creek	Helispot	1	Approved for Type 2 and Type 3	37° 30.217' N	108° 16.831' W
Spruce Creek	Helispot	2	Approved for Type 3 only	37° 30.233' N	108° 18.221' W
Spruce Creek	Helispot	3	Approved for Type 2 and Type 3	37° 29.160' N	108° 19.009' W
Spruce Creek	Helispot	4	Approved for Type 2 and Type 3	37° 29.762' N	108° 19.969' W
Spruce Creek	Mobile Weather Unit	RAWS 2	provided by IMET McKellar	37° 28.952' N	108° 21.501' W

Helispot	Contained
Drop Point	Uncontained
Camp	Wildfire Daily Fire Perimeter
Division Break	Bureau of Land Management
Mobile Weather Unit	Local Government
Dip Site	State
Draft Site	US Forest Service
Water Tank	Private
Fence	Fire History
Aerial Hazard	Potential Control Locations
Temporary Flight Restriction	Aerial Ignition Riparian Avoidance Areas