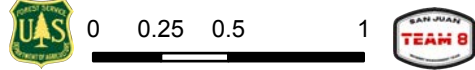


108°24.5'W 108°24'W 108°23.5'W 108°23'W 108°22.5'W 108°22'W 108°21.5'W 108°21'W 108°20.5'W 108°20'W 108°19.5'W 108°19'W 108°18.5'W 108°18'W 108°17.5'W 108°17'W 108°16.5'W 108°16'W 108°15.5'W 108°15'W 108°14.5'W 108°14'W 108°13.5'W 108°13'W 108°12.5'W

Operations

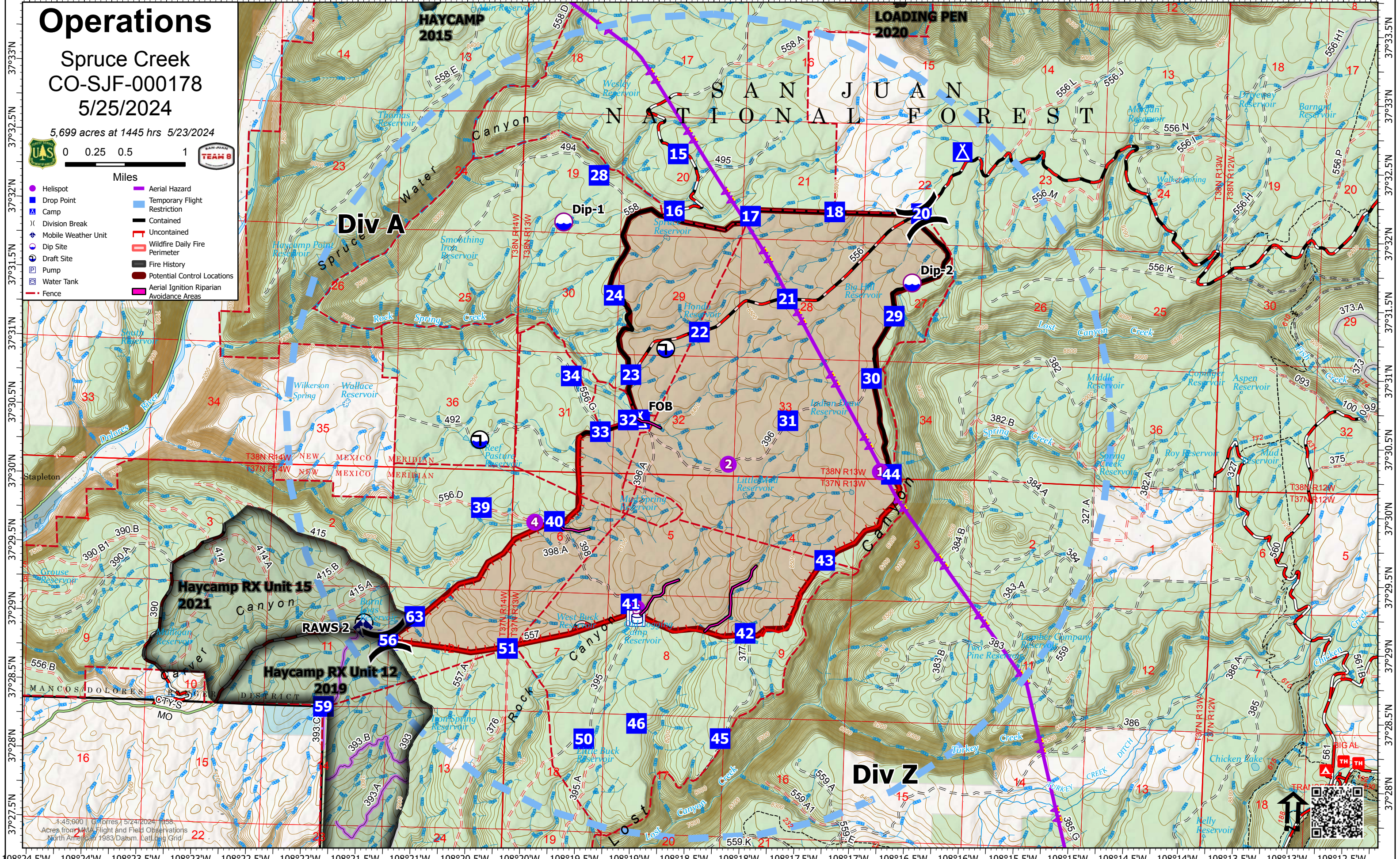
Spruce Creek
CO-SJF-000178
5/25/2024

5,699 acres at 1445 hrs 5/23/2024



Miles

- Helispot
- Drop Point
- ⌵ Camp
- ⌵ Division Break
- ⊕ Mobile Weather Unit
- ⊕ Dip Site
- ⊕ Draft Site
- ⊕ Pump
- ⊕ Water Tank
- Fence
- Aerial Hazard
- Temporary Flight Restriction
- Contained
- Uncontained
- Wildfire Daily Fire Perimeter
- Fire History
- Potential Control Locations
- Aerial Ignition Riparian Avoidance Areas



1:45,000 Colorado 5/24/2024 1858
Acres from 1:45,000 Flight and Field Observations
North American 1983 Datum, Lat/Long Grid

108°24.5'W 108°24'W 108°23.5'W 108°23'W 108°22.5'W 108°22'W 108°21.5'W 108°21'W 108°20.5'W 108°20'W 108°19.5'W 108°19'W 108°18.5'W 108°18'W 108°17.5'W 108°17'W 108°16.5'W 108°16'W 108°15.5'W 108°15'W 108°14.5'W 108°14'W 108°13.5'W 108°13'W 108°12.5'W