

Air Operations

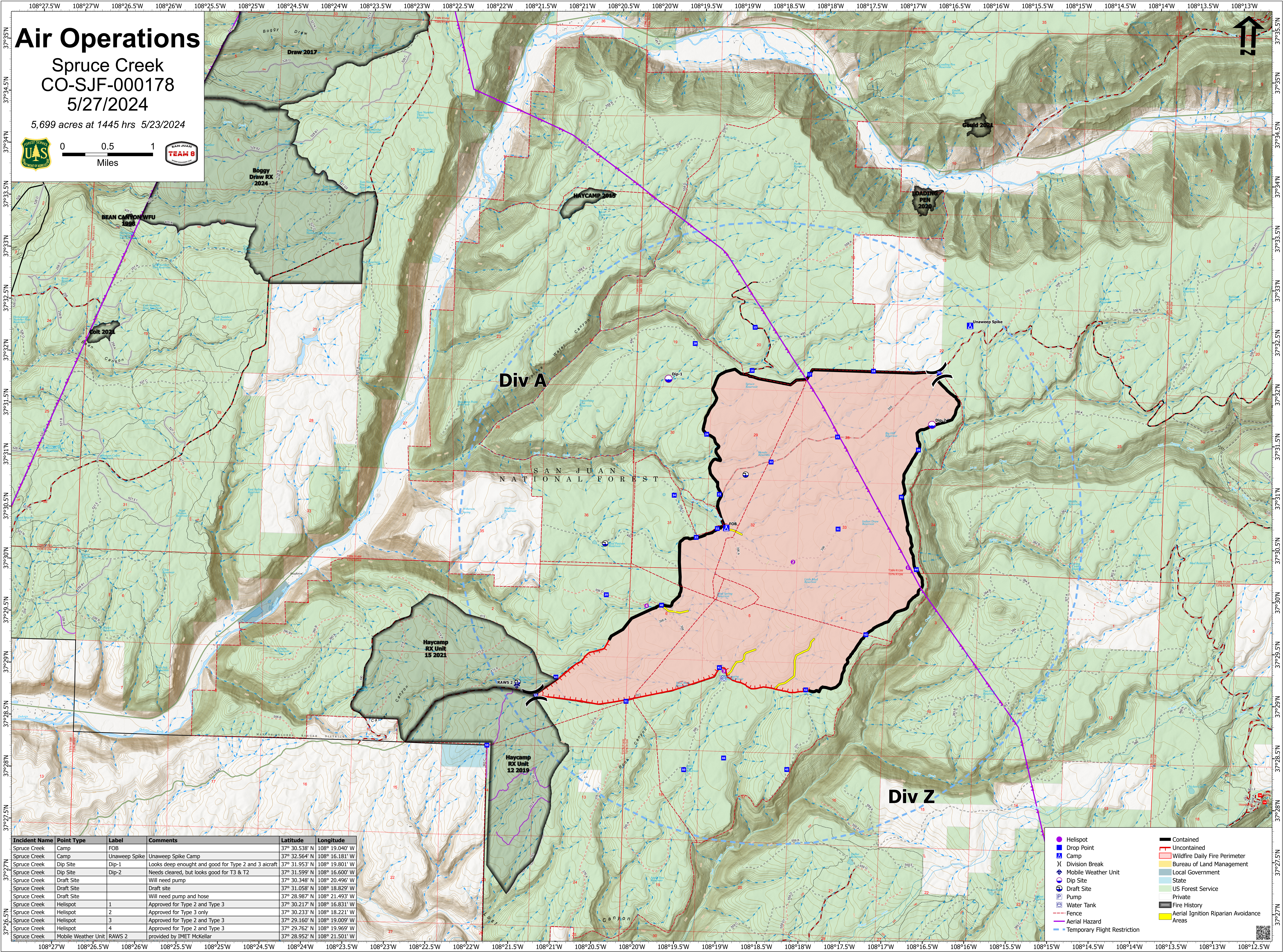
Spruce Creek
CO-SJF-000178

5/27/2024

5,699 acres at 1445 hrs 5/23/2024



0 0.5 1
Miles



Incident Name	Point Type	Label	Comments	Latitude	Longitude
Spruce Creek	Camp	FOB		37° 30.538' N	108° 19.040' W
Spruce Creek	Camp	Unaweep Spike	Unaweep Spike Camp	37° 32.564' N	108° 16.181' W
Spruce Creek	Dip Site		Looks deep enough and good for Type 2 and 3 aircraft	37° 31.953' N	108° 19.801' W
Spruce Creek	Dip Site	Dip-2	Needs cleared, but looks good for T3 & T2	37° 31.599' N	108° 16.600' W
Spruce Creek	Draft Site		Will need pump	37° 30.348' N	108° 20.496' W
Spruce Creek	Draft Site		Draft site	37° 31.058' N	108° 18.829' W
Spruce Creek	Draft Site		Will need pump and hose	37° 28.987' N	108° 21.493' W
Spruce Creek	Helispot	1	Approved for Type 2 and Type 3	37° 30.217' N	108° 16.831' W
Spruce Creek	Helispot	2	Approved for Type 3 only	37° 30.233' N	108° 18.221' W
Spruce Creek	Helispot	3	Approved for Type 2 and Type 3	37° 29.160' N	108° 19.009' W
Spruce Creek	Helispot	4	Approved for Type 2 and Type 3	37° 29.762' N	108° 19.969' W
Spruce Creek	Mobile Weather Unit	RAWS 2	provided by IMET McKellar	37° 28.952' N	108° 21.501' W

Helispot	Contained
Drop Point	Uncontained
Camp	Wildfire Daily Fire Perimeter
Camp	Bureau of Land Management
Division Break	Local Government
Mobile Weather Unit	State
Dip Site	US Forest Service
Draft Site	Private
Pump	Fire History
Water Tank	Aerial Ignition Riparian Avoidance Areas
Fence	Temporary Flight Restriction
Aerial Hazard	