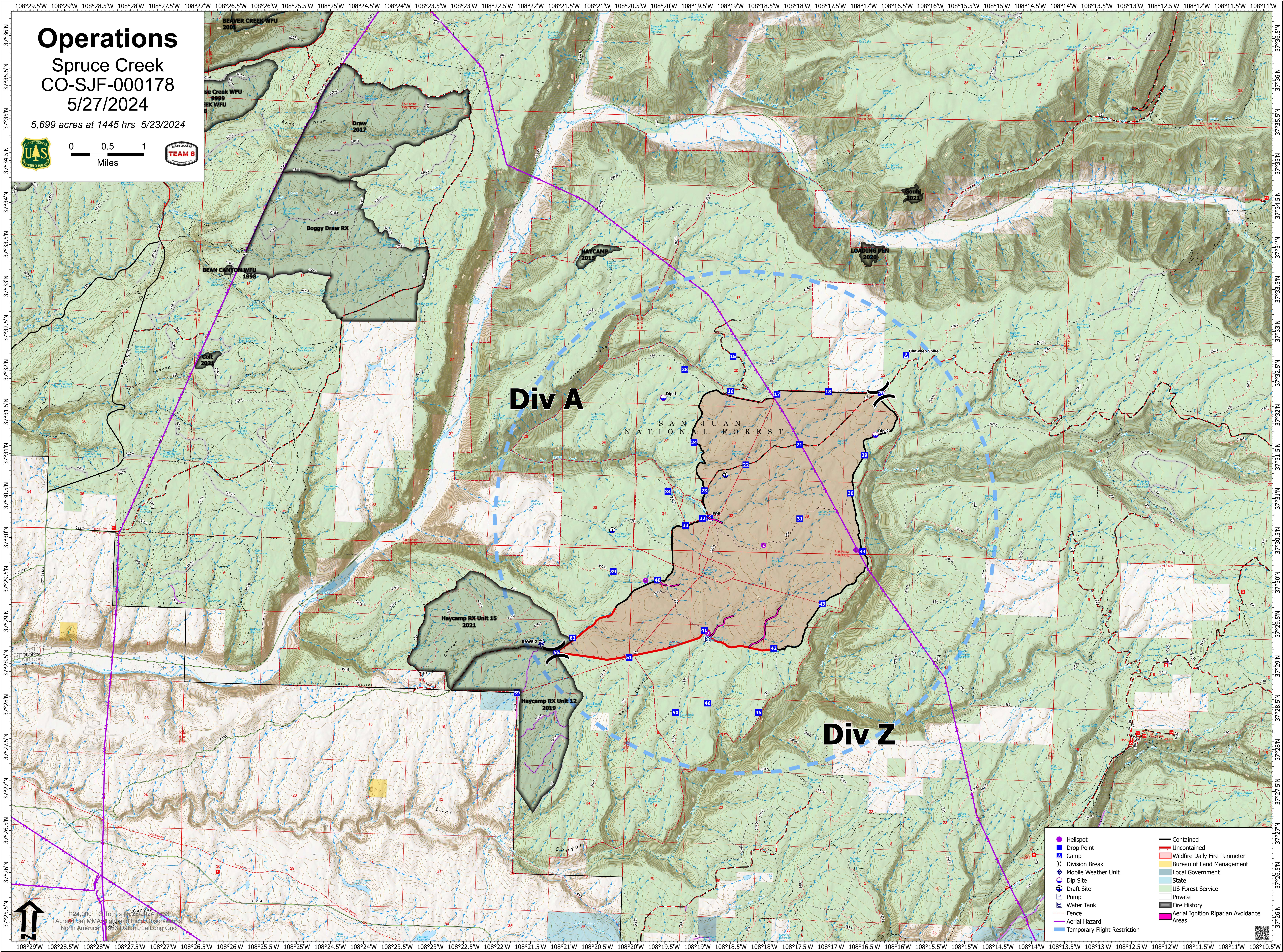
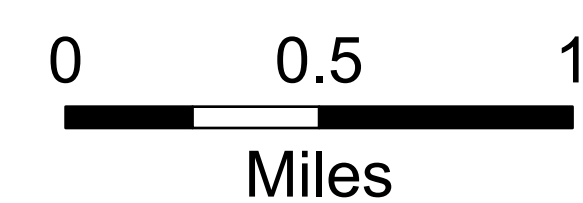


Operations

Spruce Creek
CO-SJF-000178

5/27/2024

5,699 acres at 1445 hrs 5/23/2024



Div A

Div Z

SAN JUAN NATIONAL FOREST

- Helispot
- Drop Point
- ⊗ Camp
- ⌵ Division Break
- ⊙ Mobile Weather Unit
- ⊙ Dip Site
- ⊙ Draft Site
- ⊙ Pump
- ⊙ Water Tank
- Fence
- Aerial Hazard
- Temporary Flight Restriction
- Contained
- Uncontained
- Wildfire Daily Fire Perimeter
- Bureau of Land Management
- Local Government
- State
- US Forest Service
- Private
- Fire History
- Aerial Ignition Riparian Avoidance Areas

1:24,000 | G. Torres | 5/23/2024 | 1445
Acres from MMA High-Temp Fire Observations
North American 1983 Datum, LatLong Grid