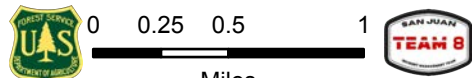


108°24.5'W 108°24'W 108°23.5'W 108°23'W 108°22.5'W 108°22'W 108°21.5'W 108°21'W 108°20.5'W 108°20'W 108°19.5'W 108°19'W 108°18.5'W 108°18'W 108°17.5'W 108°17'W 108°16.5'W 108°16'W 108°15.5'W 108°15'W 108°14.5'W 108°14'W 108°13.5'W 108°13'W 108°12.5'W

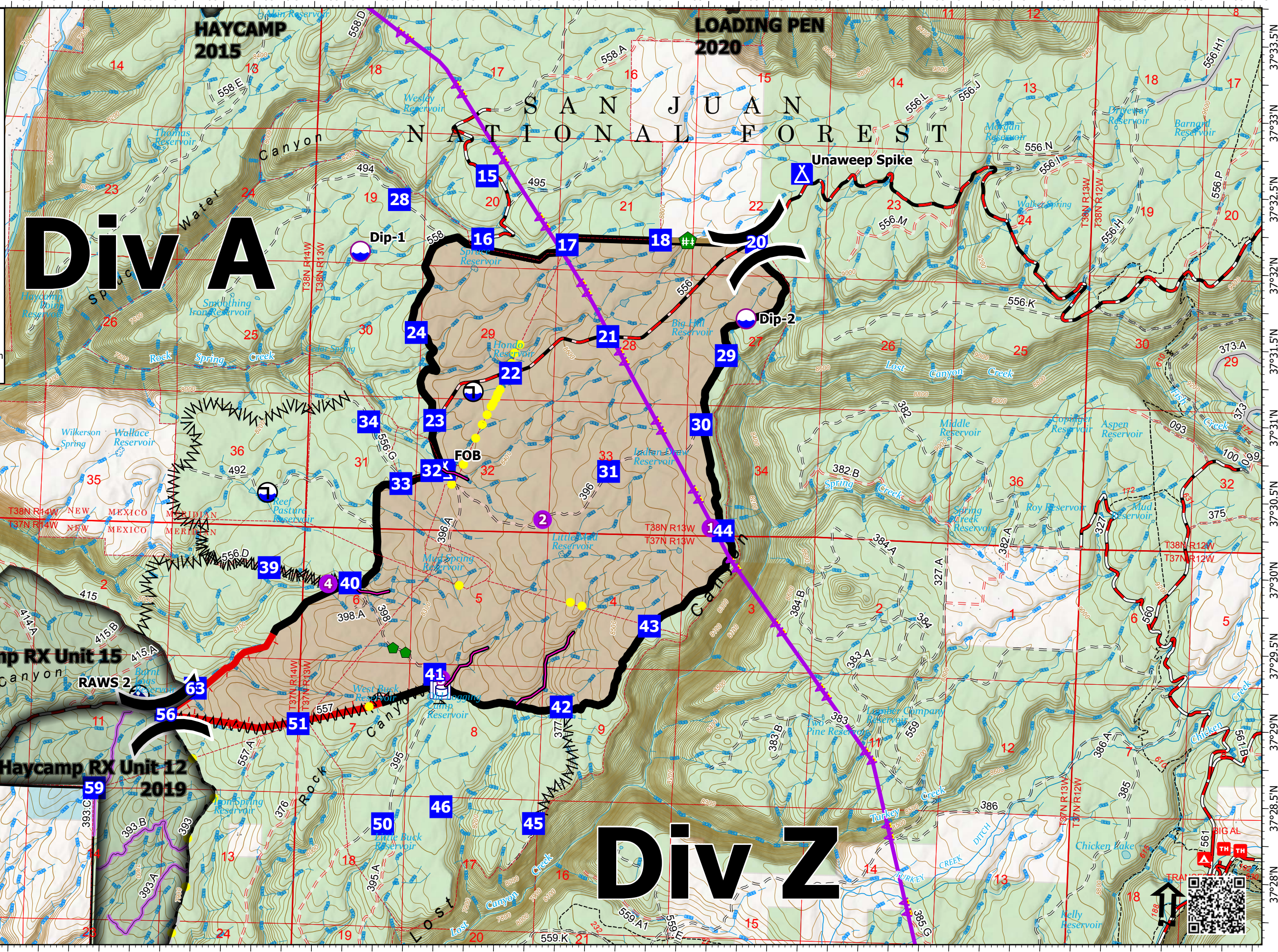
# Operations

Spruce Creek  
CO-SJF-000178  
5/28/2024

5,699 acres at 1445 hrs 5/23/2024



- Miles 0 0.25 0.5 1
- Helispot
  - Drop Point
  - ▲ Camp
  - ⋈ Division Break
  - Repair Point
  - Fence - Cut/Damaged
  - Mobile Weather Unit
  - Dip Site
  - Draft Site
  - Pump
  - Water Tank
  - Completed Fuel Break
  - Fence
  - Highlighted Feature
  - Repair Line
  - Road Repair
  - Aerial Hazard
  - Contained
  - Wildfire Daily Fire Perimeter
  - Fire History
  - Aerial Ignition Riparian Avoidance Areas



# Div A

# Div Z

1:45,000 (Color) 5/27/2024 1:36  
Acres from 1:45,000 Flight and Field Observations  
North American 1983 Datum, Lat/Long Grid



108°24.5'W 108°24'W 108°23.5'W 108°23'W 108°22.5'W 108°22'W 108°21.5'W 108°21'W 108°20.5'W 108°20'W 108°19.5'W 108°19'W 108°18.5'W 108°18'W 108°17.5'W 108°17'W 108°16.5'W 108°16'W 108°15.5'W 108°15'W 108°14.5'W 108°14'W 108°13.5'W 108°13'W 108°12.5'W