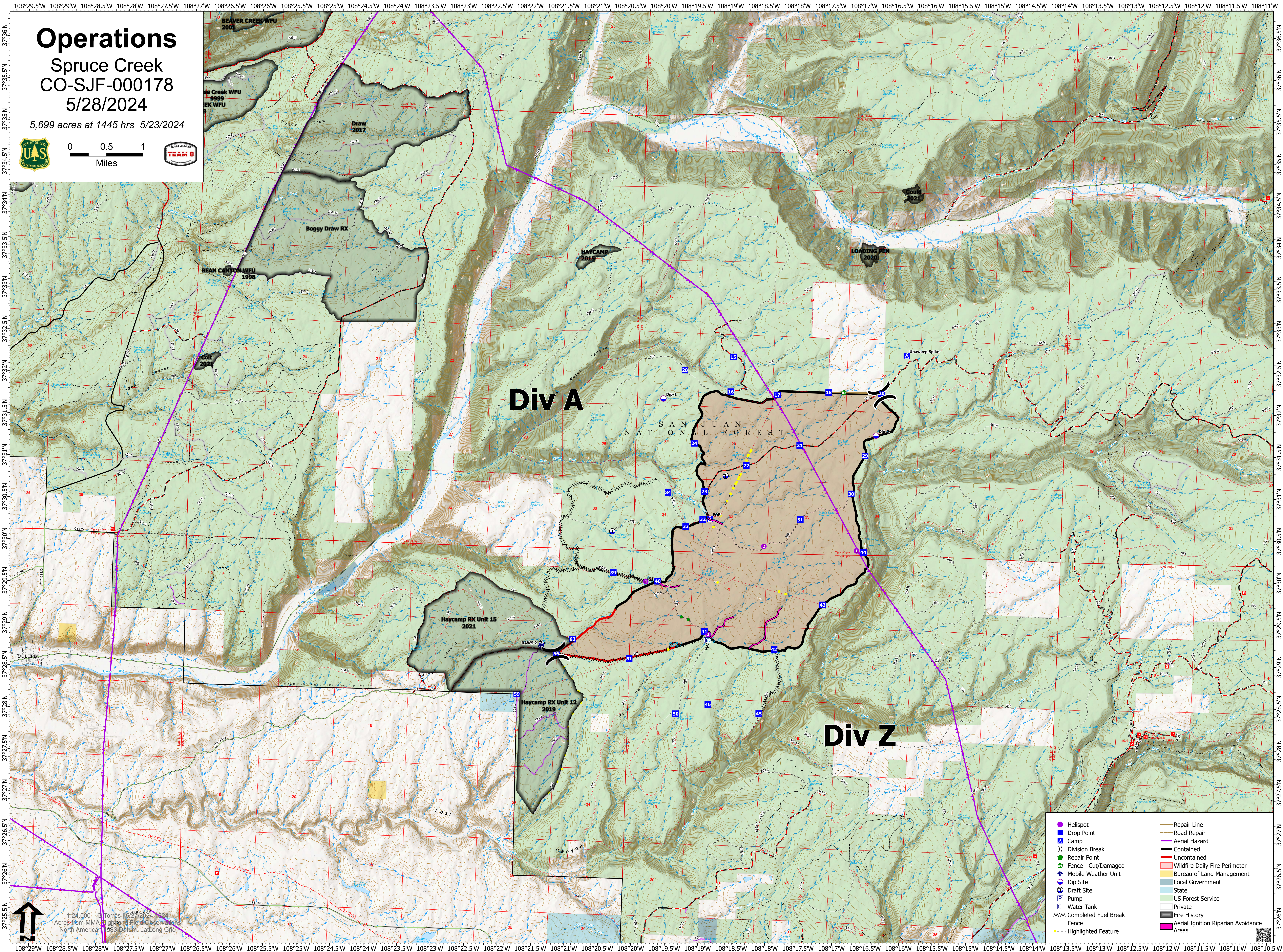
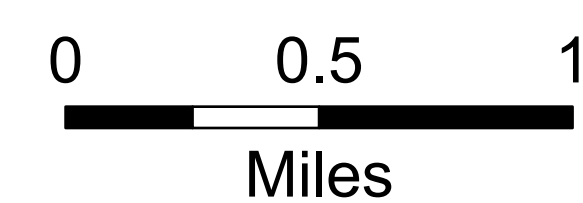


Operations

Spruce Creek
CO-SJF-000178

5/28/2024

5,699 acres at 1445 hrs 5/23/2024



Div A

Div Z

SAN JUAN NATIONAL FOREST

- Helispot
- Drop Point
- ⛑ Camp
- ⌘ Division Break
- Repair Point
- ⚡ Fence - Cut/Damaged
- Ⓜ Mobile Weather Unit
- Ⓧ Dip Site
- Ⓧ Draft Site
- Ⓧ Pump
- Ⓧ Water Tank
- Ⓧ Completed Fuel Break
- Ⓧ Fence
- Ⓧ Highlighted Feature
- Repair Line
- Road Repair
- Aerial Hazard
- Contained
- Uncontained
- Wildfire Daily Fire Perimeter
- Bureau of Land Management
- Local Government
- State
- US Forest Service
- Private
- Fire History
- Aerial Ignition Riparian Avoidance Areas

1:24,000 | G. Torres | 5/27/2024 10:01
Acres from MMA High-Temp Fire Observations
North American 1983 Datum, LatLong Grid