

# Suppression Repair

Spruce Creek  
CO-SJF-000178  
5/28/2024

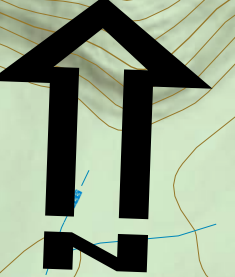
5,699 acres at 1445 hrs 5/23/2024



0 0.25  
Miles



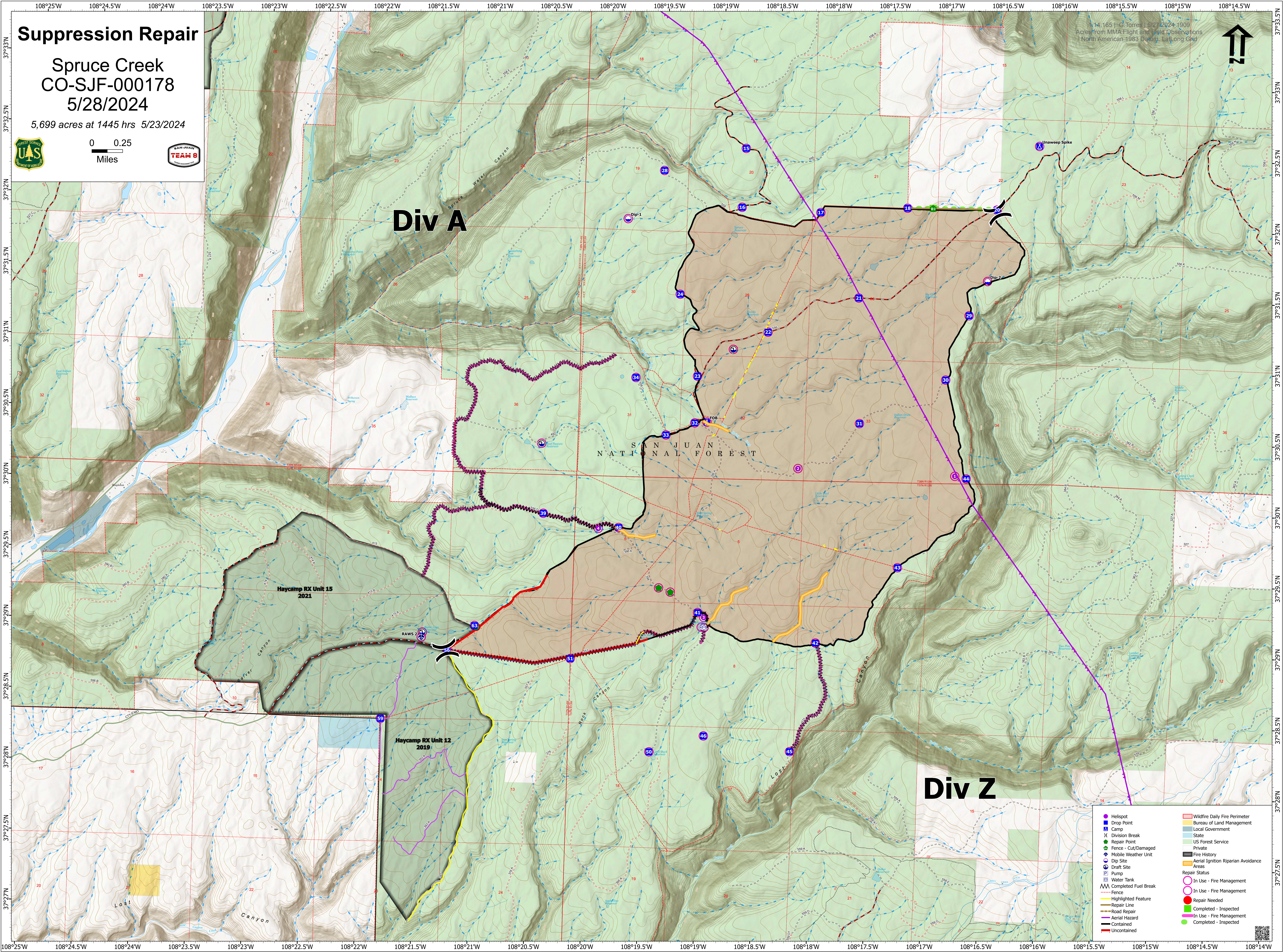
1:4,165 | G. Torres | 5/27/2024 1909  
Acreage from MMA Flight and Field Observations  
North American 1983 Datum - Lat/Long Grid



## Div A

SAN JUAN  
NATIONAL FOREST

## Div Z



- Helispot
- Drop Point
- Camp
- X Division Break
- Repair Point
- Fence - Cut/Damaged
- Mobile Weather Unit
- Dip Site
- Draft Site
- Pump
- Water Tank
- MM Completed Fuel Break
- Fence
- Highlighted Feature
- Repair Line
- Road Repair
- Aerial Hazard
- Uncontained
- Wildfire Daily Fire Perimeter
- Bureau of Land Management
- Local Government
- State
- US Forest Service
- Private
- Fire History
- Aerial Ignition Riparian Avoidance
- Areas
- Repair Status
- In Use - Fire Management
- In Use - Fire Management
- Repair Needed
- Completed - Inspected
- In Use - Fire Management
- Completed - Inspected