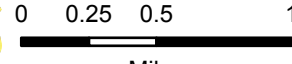


108°24.5'W 108°24'W 108°23.5'W 108°23'W 108°22.5'W 108°22'W 108°21.5'W 108°21'W 108°20.5'W 108°20'W 108°19.5'W 108°19'W 108°18.5'W 108°18'W 108°17.5'W 108°17'W 108°16.5'W 108°16'W 108°15.5'W 108°15'W 108°14.5'W 108°14'W 108°13.5'W 108°13'W 108°12.5'W

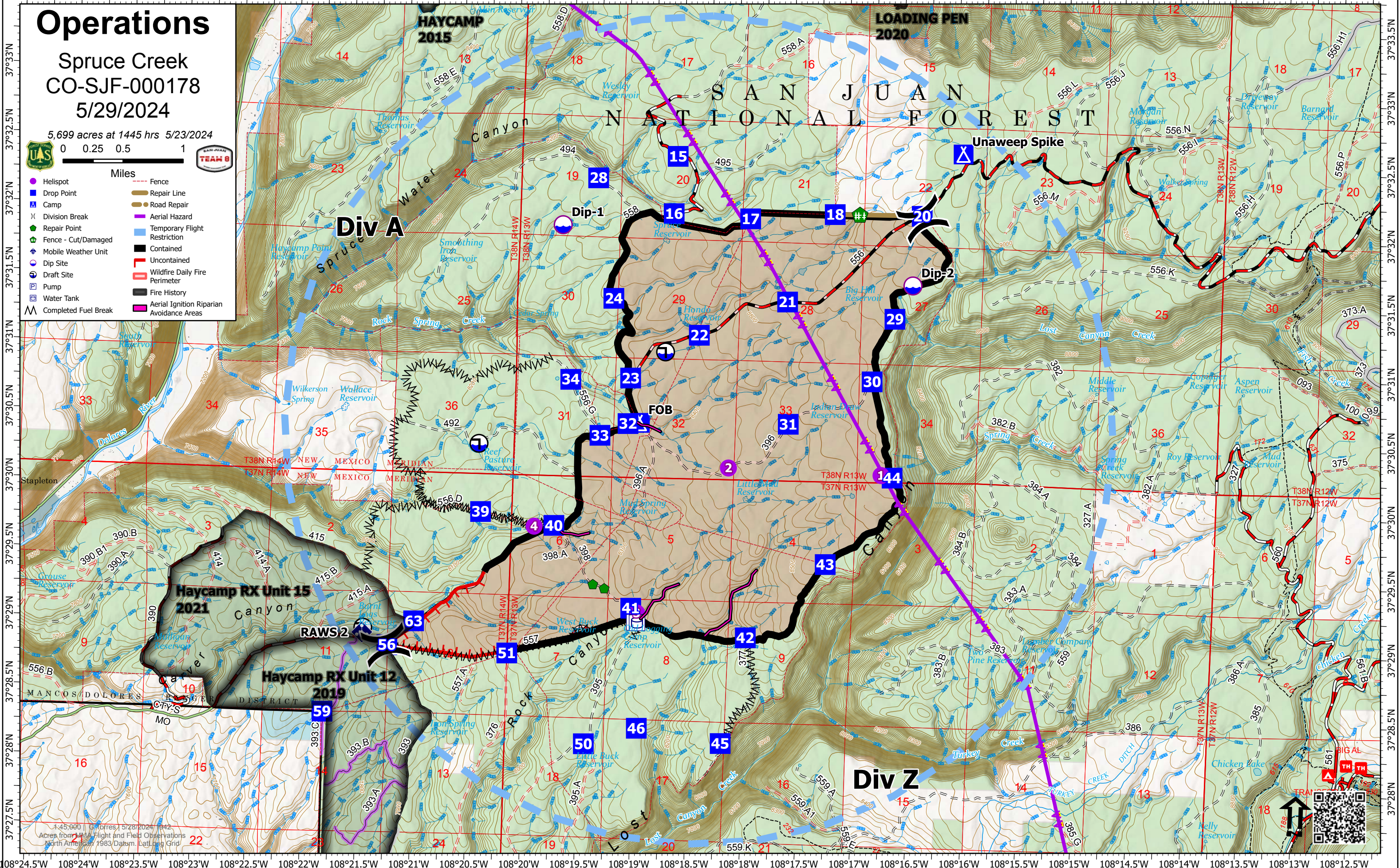
Operations

Spruce Creek
CO-SJF-000178
5/29/2024

5,699 acres at 1445 hrs 5/23/2024



- Helispot
- Drop Point
- ⓧ Camp
- ⓧ Division Break
- Repair Point
- Fence - Cut/Damaged
- ⓧ Mobile Weather Unit
- Dip Site
- ⓧ Draft Site
- ⓧ Pump
- ⓧ Water Tank
- ⓧ Completed Fuel Break
- Fence
- Repair Line
- Road Repair
- Aerial Hazard
- Temporary Flight Restriction
- Contained
- Uncontained
- Wildfire Daily Fire Perimeter
- Fire History
- Aerial Ignition Riparian Avoidance Areas



1:45,000 (Color) 5/28/2024 1:42
Acres from 1:44 Flight and Field Observations
North American 1983 Datum, Lat/Long Grid