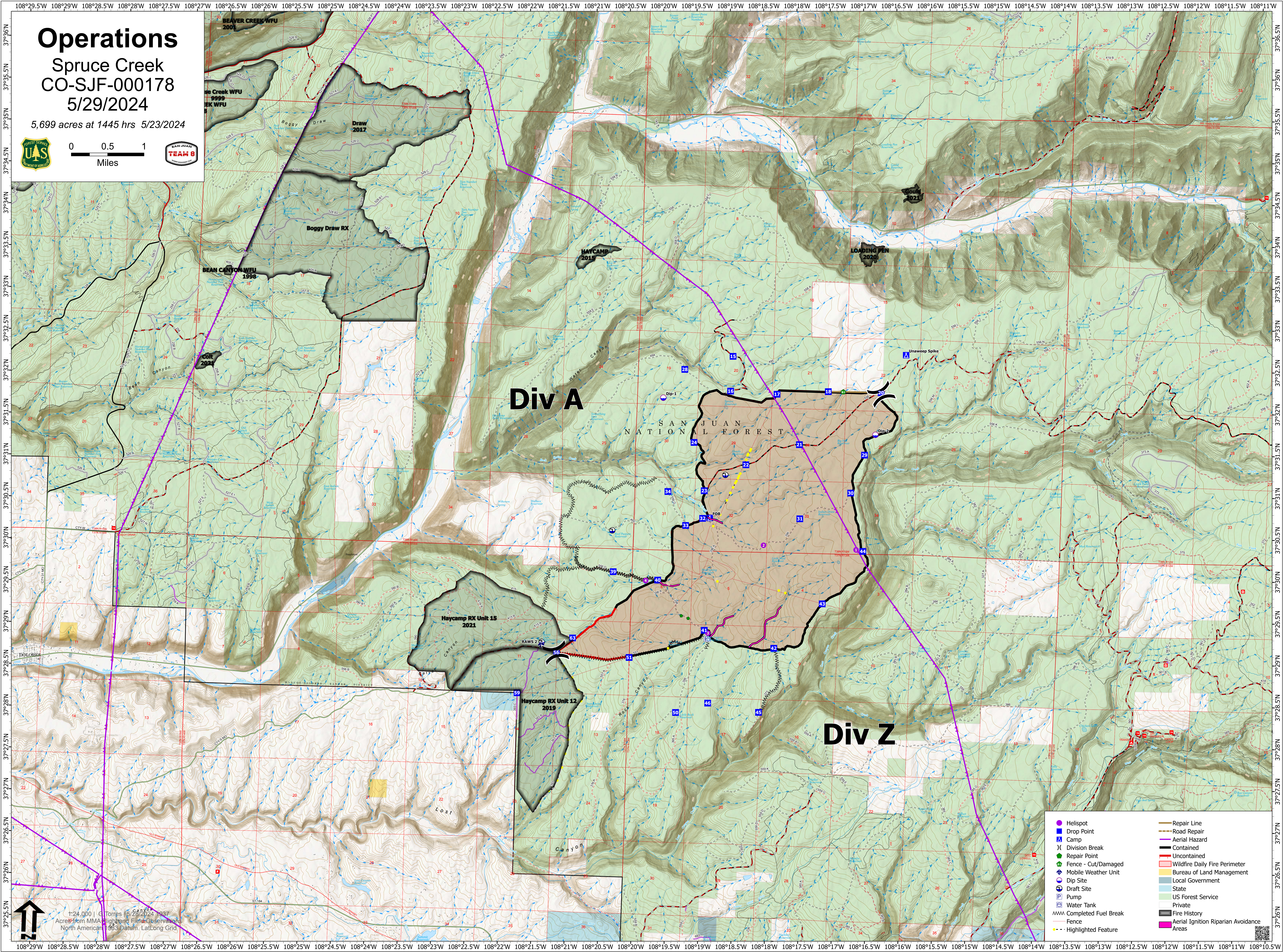
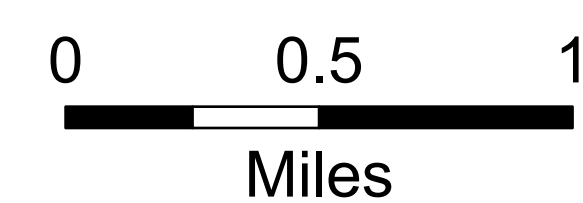


Operations

Spruce Creek
CO-SJF-000178

5/29/2024

5,699 acres at 1445 hrs 5/23/2024



Div A

Div Z

SAN JUAN NATIONAL FOREST

- Helispot
- Drop Point
- ⌘ Camp
- ⌘ Division Break
- Repair Point
- ⌘ Fence - Cut/Damaged
- ⌘ Mobile Weather Unit
- ⌘ Dip Site
- ⌘ Draft Site
- ⌘ Pump
- ⌘ Water Tank
- ⌘ Completed Fuel Break
- ⌘ Fence
- ⌘ Highlighted Feature
- Repair Line
- Road Repair
- Aerial Hazard
- Contained
- Uncontained
- Wildfire Daily Fire Perimeter
- Bureau of Land Management
- Local Government
- State
- US Forest Service
- Private
- Fire History
- Aerial Ignition Riparian Avoidance Areas

1:24,000 | G. Torres | 5/23/2024 1445
Acres from MMA High-Temp Field Observations
North American 1983 Datum, LatLong Grid