

Suppression Repair

Spruce Creek
CO-SJF-000178
5/29/2024

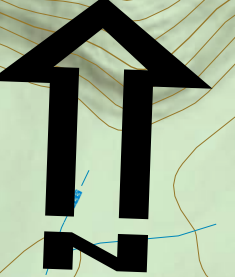
5,699 acres at 1445 hrs 5/23/2024



0 0.25
Miles



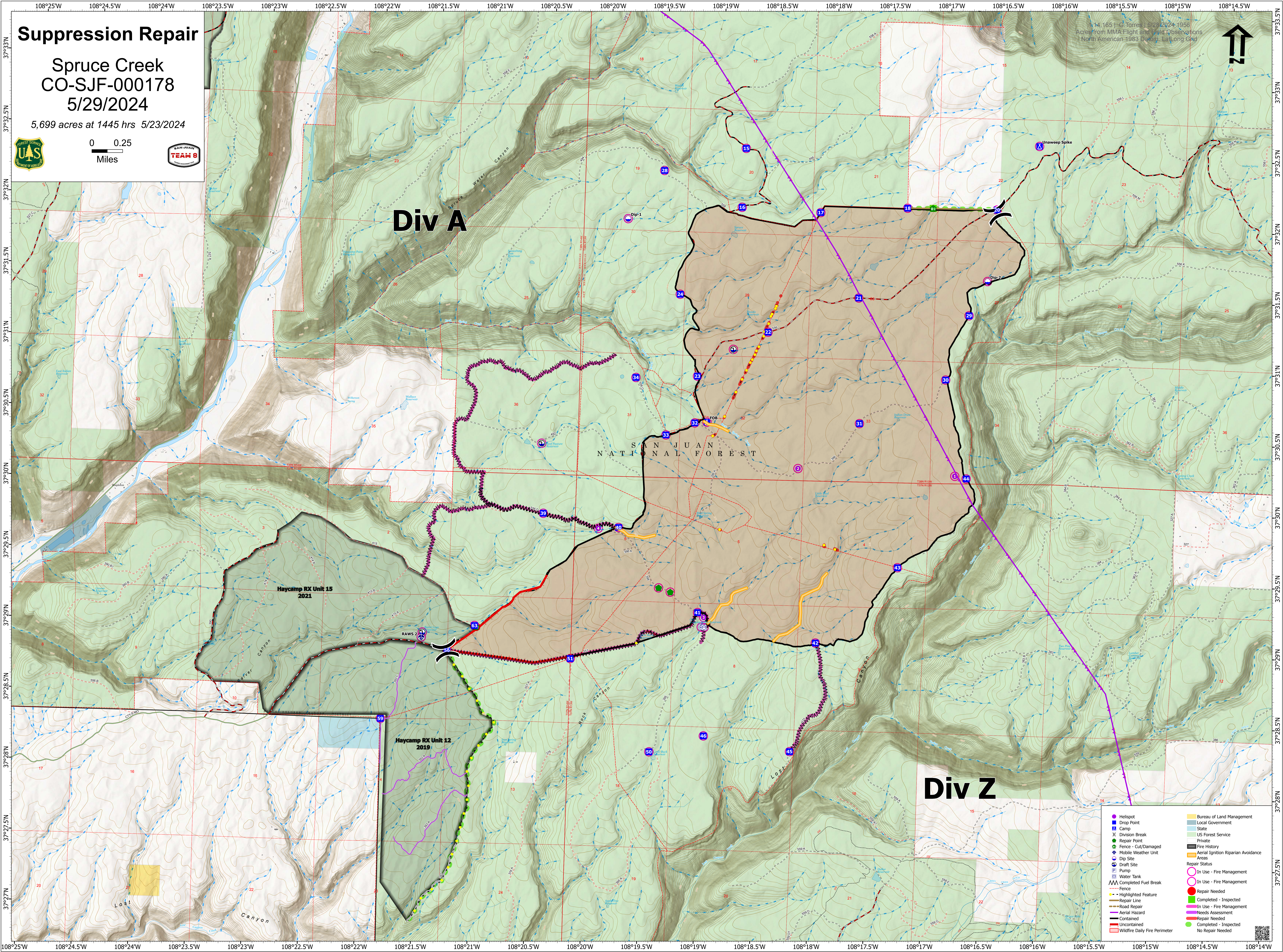
1:4,165 | G. Torres | 5/29/2024 | 1956
Acre from MMA Flight and Field Observations
North American 1983 Datum, Lat-Long Grid



Div A

SAN JUAN
NATIONAL FOREST

Div Z



- | | |
|--|---|
| <ul style="list-style-type: none">● Helispot● Drop Point● CampX Division Break● Repair Point● Fence - Cut/Damaged● Mobile Weather Unit● Dip Site● Draft Site● Pump● Water TankAA Completed Fuel Break--- Fence--- Highlighted Feature--- Repair Line--- Road Repair--- Aerial Hazard--- Contained--- Uncontained--- Wildfire Daily Fire Perimeter | <ul style="list-style-type: none">■ Bureau of Land Management■ Local Government■ State■ US Forest Service■ Private■ Fire History■ Aerial Ignition Riparian Avoidance■ Areas○ Repair Status○ In Use - Fire Management○ In Use - Fire Management○ Repair Needed○ Completed - Inspected○ In Use - Fire Management○ Needs Assessment○ Repair Needed○ Completed - Inspected○ No Repair Needed |
|--|---|