

Suppression Repair

Spruce Creek
CO-SJF-000178
5/31/2024

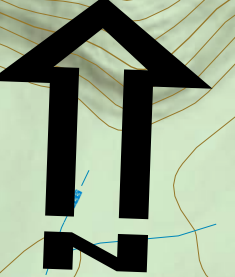
5,699 acres at 1445 hrs 5/23/2024



0 0.25
Miles



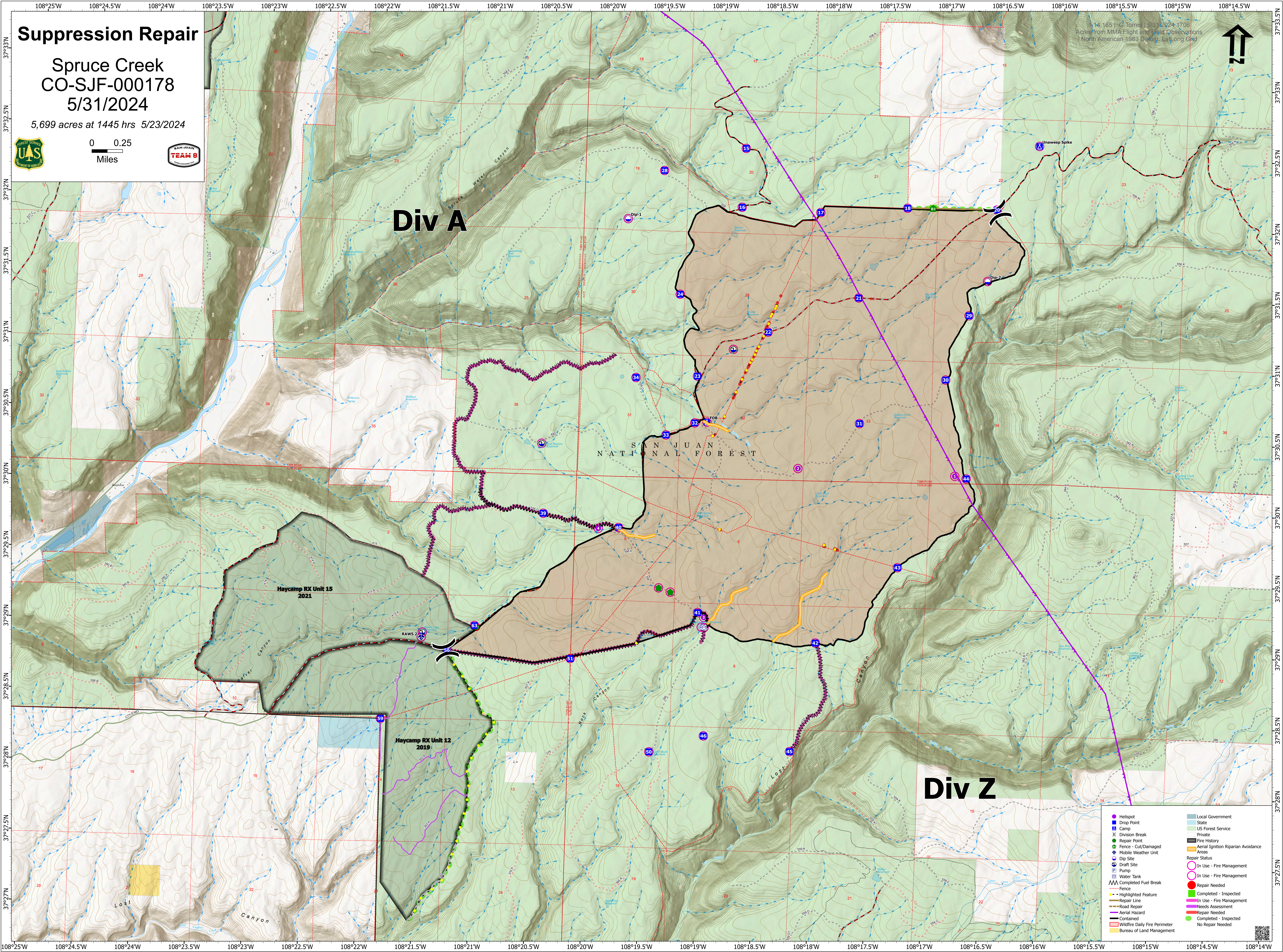
1:4,165 | G. Torres | 5/31/2024 | 1708
Aerial from MMA Flight and Flight Observations
North American 1983 Datum, Lat-Long Grid



Div A

SAN JUAN
NATIONAL FOREST

Div Z



- | | |
|---|--|
| <ul style="list-style-type: none">● Helispot● Drop Point● CampX Division Break● Repair Point● Fence - Cut/Damaged● Mobile Weather Unit● Dip Site● Draft Site● Pump● Water TankMAA Completed Fuel Break--- Fence--- Highlighted Feature--- Repair Line--- Road Repair--- Aerial Hazard--- Contained--- Wildfire Daily Fire Perimeter--- Bureau of Land Management | <ul style="list-style-type: none">Local GovernmentStateUS Forest ServicePrivateFire HistoryAerial Ignition Riparian AvoidanceAreas <p>Repair Status</p> <ul style="list-style-type: none">In Use - Fire ManagementIn Use - Fire ManagementRepair NeededCompleted - InspectedIn Use - Fire ManagementNeeds AssessmentRepair NeededCompleted - InspectedNo Repair Needed |
|---|--|

