



# Incident Action Plan

LA PLATA FIRE

CO-PSF-001374

**Operational Period:**

8/20/2025

to

8/20/2025

600

2200



**Incident Commander**

**Phillip Daniels**



**SCAN THE QR CODE TO ACCESS:**

*INCIDENT CHECK-IN FORM*

*IAPs*

*MAPS*

*CREW TIME REPORTS*

*EQUIPMENT SHIFT TICKETS*

*DEMOB FORM*

*AND MORE!!!*



1. INCIDENT NAME	La Plata Fire	3. OPERATIONAL PERIOD	Date From:	8/20/2025	Date To:	8/20/2025
2. DATE PREPARED	8/19/2025		Time From:	600	Time To:	2200
4. INCIDENT AND COMMAND STAFF			8. OPERATIONS SECTION			
Incident Commander/	Phil Daniels	Chief- Field Operations		Troy Mueller		
		Chief- Planning Operations				
		a. BRANCH				
Deputy		Branch Director				
Safety Officer	David Vitwar	Deputy				
Information Officer	Schelly Olson, Tracy LeClair (V)	Division/Group	D	Mike Evers/ John Cheroske (t)		
Liaison Officer	Shannon Byerly	Division/Group	Y	Larry Long		
		Division/Group				
5. AGENCY/ORGANIZATION REPRESENTATIVES		Division/Group				
Agency/Organization	Representative	Division/Group				
USFS Agency Admin.	Chad Bauer	Division/Group				
USFS Deputy Agency Admin.	Patrick Mercer	b. BRANCH				
Leadville Fire Department	Daniel Dailey	Branch Director				
Lake County Sheriff	Heath Speckman	Deputy				
		Division/Group				
		Division/Group				
		Division/Group				
		Division/Group				
6. PLANNING SECTION		Division/Group				
Chief	Rose Long					
Deputy		c. BRANCH				
Resources Unit	Heather Davis (t)	Branch Director				
Situation Unit		Deputy				
Documentation Unit		Division/Group				
Technical Specialists	Ben Lawrence (COTAK)	Division/Group				
Fire Behaviour Analyst		Division/Group				
G.I.S. Specialist		Division/Group				
		Division/Group				
Resource Advisor						
7. LOGISTICS SECTION		d. AIR OPERATIONS BRANCH				
Chief	Tony Mule	Air Operations Br. Dir.				
Deputy		Air Tactical Group Sup.				
a. SUPPORT BRANCH		Air Support Group Sup.				
Director						
Supply Unit						
Base Camp Manager						
Ground Support Unit		9. FINANCIAL/ADMINISTRATION SECTION				
b. SERVICE BRANCH		Chief		Allen Gallamore, Denise Tomlin		
Director		Deputy				
Communications Unit	Jim Rooney	Time Unit				
Medical Unit		Procurement Unit				
Food Unit		Compensation/Claims Unit				
		Cost Unit				
10. PREPARED BY	Position:	Planning Section Chief		Name:	Rose Long	

Spot Forecast for La Plata...Pueblo Interagency Dispatch  
National Weather Service Pueblo CO  
643 AM MDT Tue Aug 19 2025

Forecast is based on forecast start time of 0700 MDT on August 19.  
If conditions become unrepresentative, contact the National Weather  
Service.

Please contact our office at (719) 948-9429, if you have questions  
or concerns with this forecast.

.DISCUSSION...

Isolated to scattered showers and storms are expected over the  
higher terrain this afternoon. Though coverage will be sparse,  
storms could produce lightning and gusty outflow winds. Best  
chance for storms near the fire area will be early afternoon  
through mid-evening, approximately 1pm-8pm, though a shower or two  
will still be possible outside of those hours. Otherwise, warm  
today with highs in the 60s to 70s on the higher slopes, with RH  
around 15 percent this afternoon. Winds in the area will be  
variable this morning and typically around 5 mph, increasing a bit  
out of the southeast tonight. RH will recover to around 70  
percent overnight, with lows in the 30s-40s.

Chances for isolated showers and storms will return to the area  
for Wednesday, though a bit less likely than today. RH and daytime  
high temperatures will be nearly identical to today, with winds  
starting northerly by midday and turning southeasterly by evening.

.REST OF TODAY...

Sky/weather.....Mostly sunny(28 percent).  
Max temperature.....75F.  
Min humidity.....13-18 percent.  
Wind (20 ft).....Variable around 5 mph. Gusty and erratic winds expected  
near thunderstorms after 1100.  
Mixing height.....2000 ft agl until 0900. 11000 ft agl after  
1000.  
Transport winds....Southwest around 6 mph until 1000, then west  
until 1700, then east around 7 mph.  
Smoke dispersal....Poor until 0900. Good after 1000.

TIME (MDT)	7AM	8AM	9AM	10A	11A	12P	1PM	2PM	3PM	4PM	5PM
Sky (%).....	9	9	8	9	11	14	26	37	48	49	49
Weather cov....					SCH	SCH	SCH	SCH	SCH	SCH	SCH
Weather type....					RW	RW	RW	RW	RW	RW	RW
Tstm cov.....					SCH	SCH	SCH	SCH	SCH	SCH	SCH
Temp.....	52	54	56	67	70	72	72	75	73	73	73
RH.....	62	56	51	29	23	19	19	18	19	20	23
20 FT wind dir..	SW	SW	W	W	W	W	W	W	S	S	S
20 FT wind spd..	3	3	6	6	6	6	6	6	6	6	6
20 FT wind gust.	5	5	8	8	8	9	9	9	13	13	13
Eye lvl wnd dir.	SW	SW	W	W	W	W	W	W	S	S	S
Eye lvl wnd spd.	2	2	4	4	4	4	4	4	4	4	4
Eye lvl wnd gst.	3	3	5	5	5	5	5	5	8	8	8
Mix hgt (kft)...	2.0	2.0	4.0	9.0	10	12	12	12	12	11	11
Transp wind dir.	SW	SW	W	W	W	NW	NW	W	W	W	E
Transp wind spd.	6	6	6	6	6	6	6	6	6	7	7
SDspl kt-ft/1000	10	10	20	45	51	59	58	59	58	65	63

.TONIGHT...

Sky/weather.....Partly cloudy(30 percent).  
Min temperature....40F.



```

$$
Forecaster...GARBEROGLIO
Requested by...Lyndsey Wolgram
Type of request...WILDFIRE
.TAG 2520214.0/PUB
.DELDT 08/19/25
.FormatterVersion 2.0.0

```

## Assignment List (ICS 204-WF)

1. BRANCH			2. DIVISION/GROUP/STAGING		D		
3. INCIDENT NAME			4. OPERATIONAL PERIOD	Date From:	8/20/2025	Date To:	8/20/2025
La Plata Fire				Time From	0600	Time To:	2200

### 5. OPERATIONAL PERSONNEL

Operations Section Chief	Troy Mueller	Division/Group Supervisor	Mike Evers/John Cheroske (t)
Branch Director		Operations Section Chief	

### 6. RESOURCES ASSIGNED TO THIS PERIOD

Resource Identifier	Leader	LWD	No. of Persons	Radio Frequency	Remarks
C-1 CRW2 F & F	Jose		20		
C-5 CR2I Lost River	Aron		20		
C-6 CR2I NOCO	John Hill		20		
E-1 Leadville E-603	Fritz		4		
E-101	Mendez		3		

### 7. TACTICAL ASSIGNMENTS

TASK: Construct direct and indirect fireline.

PURPOSE: Keep fire from impacting values at risk.

END STATE: Fireline in the correct location with the right dimensions to contain the fire.

### 8. SPECIAL INSTRUCTIONS

### 9. COMMUNICATIONS SUMMARY

Name	Channel	Function	Rx Frequency	Rx Tone	Tx Frequency	Tx Tone	Remarks
DFPCTAC1	3	TAC	154.68	156.7	154.68	156.7	DIV 1

10. PREPARED BY	Position:	Resource Unit Leader	Name:	Heather Davis
-----------------	-----------	----------------------	-------	---------------

Assignment List (ICS 204-WF)									
1. BRANCH					2. DIVISION/GROUP/STAGING		Y		
3. INCIDENT NAME				4. OPERATIONAL PERIOD		Date From:	8/20/2025		8/20/2025
La Plata Fire						Time From	0600	Time To:	2200
5. OPERATIONAL PERSONNEL									
Operations Section Chief		Troy Mueller			Division/Group Supervisor		Larry Long		
Branch Director					Operations Section Chief				
6. RESOURCES ASSIGNED TO THIS PERIOD									
Resource Identifier	Leader	LWD	No. of Persons	Radio Frequency		Remarks			
C-4 CRW1 Smokey Bear	J. Rue		23						
7. TACTICAL ASSIGNMENTS									
TASK: Construct direct and indirect fireline.									
PURPOSE: Keep fire from impacting values at risk.									
END STATE: Fireline in the correct location with the right dimensions to contain the fire.									
8. SPECIAL INSTRUCTIONS									
9. COMMUNICATIONS SUMMARY									
Name	Channel	Function	Rx Frequency	Rx Tone	Tx Frequency	Tx Tone	Remarks		
DFPCTAC2	4	TAC	154.6950	156.7	154.6950	156.7	DIV 2		
10. PREPARED BY		Position:	Resource Unit Leader			Name:	Heather Davis		



INCIDENT RADIO COMMUNICATIONS PLAN				Incident Name		Date/Time Prepared		Operational Period Date/Time	
				LA PLATA FIRE		08/19/25 @ 1800		08/20/25 0700 to 08/20/25 2300	
Ch #	Function	Channel Name	Assignment	RX Freq	RX Tone/NAC	TX Freq	Tx Tone/NAC	Mode A, D, M	Remarks
1	CMD	NOT USED	ALL	159.4575	156.7	155.4975	156.7	A	NOT AVAILABLE
2	FOREST Net	QUAIL	FOREST Net	171.5750	110.9	162.6125	110.9	A	FOREST Net
3	TAC	DFPCTAC1	DIV 1	154.6800	156.7	154.6800	156.7	A	DIV 1
4	TAC	DFPCTAC2	DIV 2	154.6950	156.7	154.6950	156.7	A	DIV 2
5	TAC	DFPCTAC3	DIV 3	154.8300	156.7	154.8300	156.7	A	DIV 3
6	TAC	DFPCTAC4	DIV 4	154.9400	156.7	154.9400	156.7	A	DIV 4
7	NOT USED	NOT USED	---	---	---	---	---	--	
8	NOT USED	NOT USED	---	---	---	---	---	--	
9	NOT USED	NOT USED	---	---	---	---	---	--	
10	NOT USED	NOT USED	---	---	---	---	---	--	
11	NOT USED	NOT USED	---	---	---	---	---	--	
12	NOT USED	NOT USED	---	---	---	---	---	--	
13	NOT USED	NOT USED	---	---	---	---	---	--	
14	AIR EVAC	VMED28	ALL	155.3400	---	155.3400	156.7	A	Aero Medical Evac
15	A/G 1	A/G 1	Air to Ground	166.6125	---	166.6125	---	A	Air to Ground Primary
16	AIRGUARD	AIRGUARD	Emergency A/G	168.6250	---	168.6250	110.9	A	Emergency A/G
Prepared By (Communications Unit)				Last Clone Name: 081925					
Jim Rooney COML				24 Hour Communications Phone: 720-393-0875					

Use Human Repeaters when and where necessary.

Use only Channels assigned.

Controlled Unclassified Information//Basic

NFES 1330



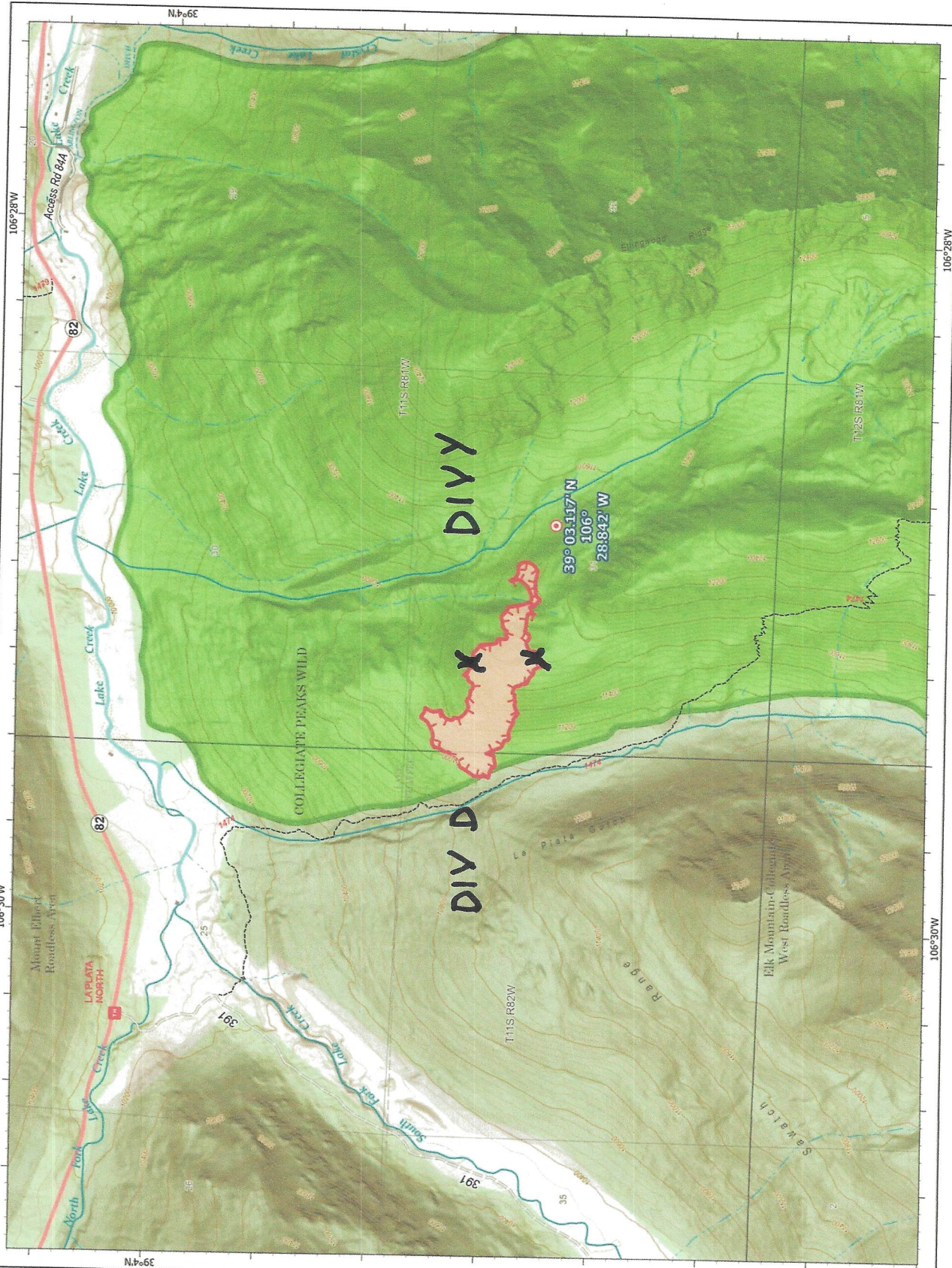
# Operations

La Plata  
CO-PSF-001374  
8/19/2025 Day  
39 acres at 08/19/2025

- USA Structures
- Hot Spot - Spot Fire
- Wildfire Perimeter
- Uncontained Fire Edge
- Trail
- Secondary Highway
- Road, Not Maintained for Passenger Car
- Road, Dirt/Gravel
- USFS Roadless Areas
- FS Wilderness Area
- Forest Service Lands
- Administrative FS Boundary
- Hot Spot - Spot Fire



1:15,000 (BIST, 8/19/2025 13:49)  
Acres from UAS Report 8/19  
North American 1983 Datum, Lat/Long Grid





**Incident:**

**La Plata Fire**

**Date:**

**8/20/2025**

**Operational Period:**

**Day**



## **SAFETY MESSAGE**



*Fire fighter safety comes first on every fire, every time*

### **Transition Day: Go Slow to Go Fast**

Regardless of fire behavior or activities, transition is a likely time for things to slip through the cracks! Know who you are working for and establish good communication with them for accountability. If you don't know something, **ASK**. If you have helpful information pass it on. Remember that an obvious hazard to you may be unknown to others, unless YOU communicate it!!!

- There are new division supervisors, do you know who you are working for?
- Do you have an updated map and have you provided your updates?
- Do you know how to use your radio and what command and tactical channels you are using? Air medical evacuation will be on VMED 28.
- Do you know what to do in case of a medical emergency? (See ICS-206)
- You will be working at 11,000' above sea level!!!! Drink water and take breaks.

### **Medical Plan:**

- The ground transportation from the fire perimeter to the trailhead is about 1 ½ hours. A REMS has been ordered, but until then, talk within your division as to how you will bring someone down.
- What medical equipment and/or EMTs do you have in your division?

### **Driving:**

- Hwy 82 is open and is a scenic byway so anticipate vehicles coming from both directions. Drive slowly through Twin Lakes and the construction zone.

### **THE TAKEAWAY MESSAGES HERE ARE ...**

*Know who you are working for, how to communicate with them and always maintain accountability. Communicate your concerns upward.*

Safety Officer: David Vitwar

# MEDICAL PLAN (ICS 206WF)

## ROCKY MOUNTAIN INCIDENT MANAGEMENT

<b>1. Incident/Project Name</b>				<b>2. Operational Period</b>			
<b>La Plata Fire</b>				<b>August 20, 2025</b>			
<b>3. Ambulance Services</b>							
Name	Location	Phone/Frequency	Advanced Life Support (ALS)				
<b>St. Vincent</b>	<b>816 W. 4<sup>th</sup> St, Leadville, CO 80461</b>	<b>719-486-7144</b>	Yes <b>X</b>	No			
<b>4. AIR AMBULANCE SERVICES</b>							
Name	Phone/Freq	Type of Aircraft & Capability					
<b>Flight For Life</b>	<b>720-321-3900</b>	<b>AS 350 AStar, Air Evacuation</b>					
<b>5. Hospitals</b>							
Name	Address	Travel Time		Phone	Helipad		Level of Care Facility
		GND	AIR		Yes	No	
<b>St. Vincent Health</b>	<b>816 W 4<sup>th</sup> Street Leadville, CO 80461</b>	<b>35 mins</b>	<b>15</b>	<b>719-486-0230</b>	<b>X</b>		<b>Critical Care- Yes</b>
<b>Heart of the Rockies</b>	<b>1000 Rush Drive Salida, CO 81201</b>	<b>60 mins</b>	<b>30 mins</b>	<b>719-530-2200</b>	<b>X</b>		<b>Level 4 Trauma Center</b>
<b>UC Health Burn Center Anschutz Medical Ctr</b>	<b>12505 E 16<sup>th</sup> Ave. Aurora, CO 80045</b>	<b>3 hrs</b>	<b>1 hr</b>	<b>720-848-0000</b>	<b>X</b>		<b>Level 1 Trauma Center Critical Care-Yes Burn Center- Yes</b>
*Travel times are from DP 20/Stagging to the facility and DO NOT include response time to the incident.							
<b>6. Division   Branch   Group</b>							
<b>Delta</b>		EMS Responders & Capability:		Check on division resources for capabilities			
		Equipment Available on Scene:					
		Medical Emergency Channel:		Command		Medical Evac: VMED 28	
<b>Yankee</b>		EMS Responders & Capability:		Check on division resources for capabilities			
		Equipment Available on Scene:					
		Medical Emergency Channel:		Command		Medical Evac: VMED 28	
		EMS Responders & Capability:					
		Equipment Available on Scene:					
		Medical Emergency Channel:					
		EMS Responders & Capability:					
		Equipment Available on Scene:					
		Medical Emergency Channel:					
		EMS Responders & Capability:					
		Equipment Available on Scene:					
		Medical Emergency Channel:					
		EMS Responders & Capability:					
		Equipment Available on Scene:					
		Medical Emergency Channel:					
		EMS Responders & Capability:					
		Equipment Available on Scene:					
		Medical Emergency Channel:					
		EMS Responders & Capability:					
		Equipment Available on Scene:					
		Medical Emergency Channel:					
		EMS Responders & Capability:					
		Equipment Available on Scene:					
		Medical Emergency Channel:					
		EMS Responders & Capability:					
		Equipment Available on Scene:					
		Medical Emergency Channel:					
		EMS Responders & Capability:					
		Equipment Available on Scene:					
		Medical Emergency Channel:					
		EMS Responders & Capability:					
		Equipment Available on Scene:					
		Medical Emergency Channel:					
		EMS Responders & Capability:					
		Equipment Available on Scene:					
		Medical Emergency Channel:					
		EMS Responders & Capability:					
		Equipment Available on Scene:					
		Medical Emergency Channel:					
		EMS Responders & Capability:					
		Equipment Available on Scene:					
		Medical Emergency Channel:					
		EMS Responders & Capability:					
		Equipment Available on Scene:					
		Medical Emergency Channel:					
		EMS Responders & Capability:					
		Equipment Available on Scene:					
		Medical Emergency Channel:					
		EMS Responders & Capability:					
		Equipment Available on Scene:					
		Medical Emergency Channel:					
		EMS Responders & Capability:					
		Equipment Available on Scene:					
		Medical Emergency Channel:					
		EMS Responders & Capability:					
		Equipment Available on Scene:					
		Medical Emergency Channel:					
		EMS Responders & Capability:					
		Equipment Available on Scene:					
		Medical Emergency Channel:					
		EMS Responders & Capability:					
		Equipment Available on Scene:					
		Medical Emergency Channel:					
		EMS Responders & Capability:					
		Equipment Available on Scene:					
		Medical Emergency Channel:					
		EMS Responders & Capability:					
		Equipment Available on Scene:					
		Medical Emergency Channel:					
		EMS Responders & Capability:					
		Equipment Available on Scene:					
		Medical Emergency Channel:					
		EMS Responders & Capability:					
		Equipment Available on Scene:					
		Medical Emergency Channel:					
		EMS Responders & Capability:					
		Equipment Available on Scene:					
		Medical Emergency Channel:					
		EMS Responders & Capability:					
		Equipment Available on Scene:					
		Medical Emergency Channel:					
		EMS Responders & Capability:					
		Equipment Available on Scene:					
		Medical Emergency Channel:					
		EMS Responders & Capability:					
		Equipment Available on Scene:					
		Medical Emergency Channel:					
		EMS Responders & Capability:					
		Equipment Available on Scene:					
		Medical Emergency Channel:					
		EMS Responders & Capability:					
		Equipment Available on Scene:					
		Medical Emergency Channel:					
		EMS Responders & Capability:					
		Equipment Available on Scene:					
		Medical Emergency Channel:					
		EMS Responders & Capability:					
		Equipment Available on Scene:					
		Medical Emergency Channel:					
		EMS Responders & Capability:					
		Equipment Available on Scene:					
		Medical Emergency Channel:					
		EMS Responders & Capability:					
		Equipment Available on Scene:					
		Medical Emergency Channel:					
		EMS Responders & Capability:					
		Equipment Available on Scene:					
		Medical Emergency Channel:					
		EMS Responders & Capability:					
		Equipment Available on Scene:					
		Medical Emergency Channel:					
		EMS Responders & Capability:					
		Equipment Available on Scene:					
		Medical Emergency Channel:					
		EMS Responders & Capability:					
		Equipment Available on Scene:					
		Medical Emergency Channel:					
		EMS Responders & Capability:					
		Equipment Available on Scene:					
		Medical Emergency Channel:					
		EMS Responders & Capability:					
		Equipment Available on Scene:					
		Medical Emergency Channel:					
		EMS Responders & Capability:					
		Equipment Available on Scene:					
		Medical Emergency Channel:					
		EMS Responders & Capability:					
		Equipment Available on Scene:					
		Medical Emergency Channel:					
		EMS Responders & Capability:					
		Equipment Available on Scene:					
		Medical Emergency Channel:					
		EMS Responders & Capability:					
		Equipment Available on Scene:					
		Medical Emergency Channel:					
		EMS Responders & Capability:					
		Equipment Available on Scene:					
		Medical Emergency Channel:					
		EMS Responders & Capability:					
		Equipment Available on Scene:					
		Medical Emergency Channel:					
		EMS Responders & Capability:					
		Equipment Available on Scene:					
		Medical Emergency Channel:					
		EMS Responders & Capability:					
		Equipment Available on Scene:					
		Medical Emergency Channel:					
		EMS Responders & Capability:					
		Equipment Available on Scene:					
		Medical Emergency Channel:					
		EMS Responders & Capability:					
		Equipment Available on Scene:					
		Medical Emergency Channel:					
		EMS Responders & Capability:					
		Equipment Available on Scene:					
		Medical Emergency Channel:					
		EMS Responders & Capability:					
		Equipment Available on Scene:					
		Medical Emergency Channel:					
		EMS Responders & Capability:					
		Equipment Available on Scene:					
		Medical Emergency Channel:					
		EMS Responders & Capability:					
		Equipment Available on Scene:					
		Medical Emergency Channel:					
		EMS Responders & Capability:					
		Equipment Available on Scene:					



# MEDICAL PLAN (ICS 206 WF)

Controlled Unclassified Information//Basic

## Medical Incident Report

**FOR A NON-EMERGENCY INCIDENT, WORK THROUGH CHAIN OF COMMAND TO REPORT AND TRANSPORT INJURED PERSONNEL AS NECESSARY.**

**FOR A MEDICAL EMERGENCY: IDENTIFY ON-SCENE INCIDENT COMMANDER BY NAME AND POSITION AND ANNOUNCE "MEDICAL EMERGENCY" TO INITIATE RESPONSE FROM IMT COMMUNICATIONS/DISPATCH.**

**Use the following items to communicate situation to communications/dispatch.**

**1. CONTACT COMMUNICATIONS / DISPATCH** (Verify correct frequency prior to starting report)

Ex: "Communications, Div. Alpha. Stand-by for Emergency Traffic."

**2. INCIDENT STATUS:** Provide incident summary (including number of patients) and command structure.

Ex: "Communications, I have a Red priority patient, unconscious, struck by a falling tree. Requesting air ambulance to Forest Road 1 at (Lat./Long.) This will be the Trout Meadow Medical, IC is TFLD Jones. EMT Smith is providing medical care."

Severity of Emergency / Transport Priority	<input type="checkbox"/> <b>RED / PRIORITY 1 Life or limb threatening injury or illness. Evacuation need is IMMEDIATE</b> Ex: Unconscious, difficulty breathing, bleeding severely, 2° – 3° burns more than 4 palm sizes, heat stroke, disoriented. <input type="checkbox"/> <b>YELLOW / PRIORITY 2 Serious Injury or illness. Evacuation may be DELAYED if necessary.</b> Ex: Significant trauma, unable to walk, 2° – 3° burns not more than 1-3 palm sizes. <input type="checkbox"/> <b>GREEN / PRIORITY 3 Minor Injury or illness. Non-Emergency transport</b> Ex: Sprains, strains, minor heat-related illness.	
Nature of Injury or Illness & Mechanism of Injury		Brief Summary of Injury or Illness (Ex: Unconscious, Struck by Falling Tree)
Evacuation Request		Air Ambulance / Short Haul/Hoist Ground Ambulance / Other
Patient Location		Descriptive Location & Lat. / Long. (WGS84)
Incident Name		Geographic Name + Medical (Ex: Trout Meadow Medical)
On-Scene Incident Commander		Name of on-scene IC of Incident within an Incident (Ex: TFLD Jones)
Patient Care		Name of Care Provider (Ex: EMT Smith)

**3. INITIAL PATIENT ASSESSMENT:** Complete this section for each patient as applicable (start with the most severe patient)

Patient Assessment: See IRPG PAGE 108

Treatment:

**4. EVACUATION PLAN:**

Evacuation Location (if different): (Descriptive Location (drop point, intersection, etc.) or Lat. / Long.) Patient's ETA to Evacuation Location:

Helispot / Extraction Site Size and Hazards:

**5. ADDITIONAL RESOURCES / EQUIPMENT NEEDS:**

Example: Paramedic/EMT, crews, immobilization devices, AED, oxygen, trauma bag, IV/fluid(s), splints, rope rescue, wheeled litter, HAZMAT, extrication

**6. COMMUNICATIONS: Identify State Air/Ground EMS Frequencies and Hospital Contacts as applicable**

Function	Channel Name/Number	Receive (RX)	Tone/NAC *	Transmit (TX)	Tone/NAC *
COMMAND					
AIR-TO-GRND					
TACTICAL					

**7. CONTINGENCY: Considerations:** If primary options fail, what actions can be implemented in conjunction with primary evacuation method? Be thinking ahead..

**8. ADDITIONAL INFORMATION:** Updates/Changes, etc.

**REMEMBER:** Confirm ETAs of resources ordered. Act according to your level of training. Be Alert. Keep Calm. Think Clearly. Act Decisively.



1. Incident Name

2. Operational Period (Date / Time)

From:

To:

UNIT LOG (CONT.)  
ICS 214-OS

6. Activity Log (Continuation Sheet)

TIME

MAJOR EVENTS

7. Prepared by:

Date / Time

UNIT LOG

June 2000

ICS 214-OS