



Incident Action Plan

LA PLATA FIRE
CO-PSF-001374

Operational Period:

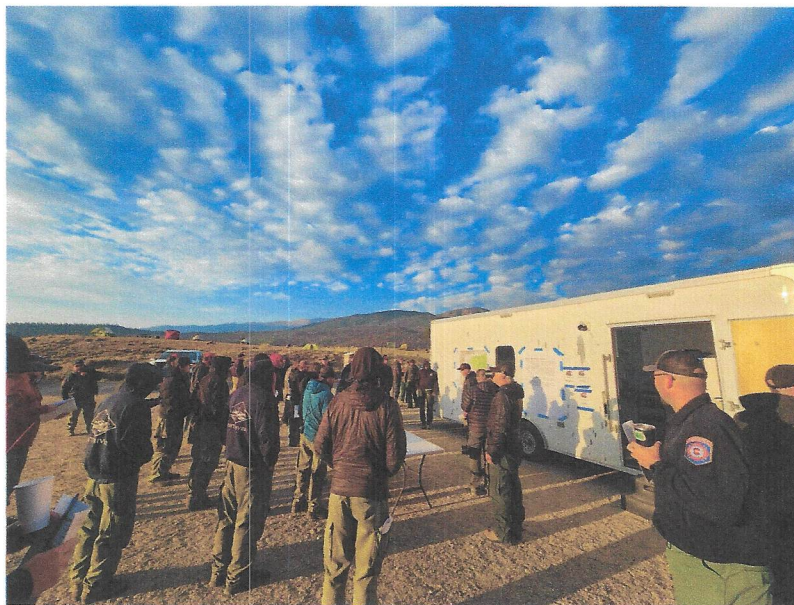
8/23/2025

to

8/23/2025

700

2200



Incident Commander:

Phillip Daniels



SCAN THE QR CODE TO ACCESS:

INCIDENT CHECK-IN FORM

IAPs

MAPS


CREW TIME REPORTS

EQUIPMENT SHIFT TICKETS

DEMOB FORM

AND MORE!!!

Incident Objectives (ICS 202-WF)

1. INCIDENT NAME	LA PLATA FIRE	2. DATE PREPARED	8/22/2025	3. FIRE SIZE	133.0 ac
4. OPERATIONAL PERIOD	Date From:	8/23/2025	Date To:	8/23/2025	
	Time From:	0700	Time To:	2200	
5. GENERAL CONTROL OBJECTIVES FOR THE INCIDENT (include alternatives)					
<p>Prioritize Safety: Ensure firefighter and public safety by implementing tactical operations that align with the values at risk, offer a high likelihood of success, and deploy the appropriate mix and quantity of resources to achieve mission objectives effectively.</p> <p>Strategic Suppression: Guide fire behavior toward natural or constructed barriers, or into areas with more favorable fuel conditions, to minimize threats to private property, communities, infrastructure, watersheds, and other critical assets. When appropriate utilize the Incident Strategic Alignment Process to determine priorities and to create a longer term strategic plan.</p> <p>Cost-Conscious Management: Apply cost containment principles to manage incident expenses, ensuring that financial decisions reflect the scale and significance of the values at risk.</p> <p>Collaborative Engagement: Strengthen partnerships across agencies, governments, and firefighting entities through transparent practices, consistent communication, and shared decision-making.</p>					
6. WEATHER FORECAST (Y/N)					
<p>Upper ridge of high pressure will flatten and shift to the south, allowing northwest flow aloft to settle in across the state and the fire area. This shift in the weather pattern will mean cooler and wetter conditions for the fire.</p> <p>Persistent northwest flow with embedded waves will then lead to daily showers and thunderstorms from Saturday into next Friday, with the greatest chance for wetting rainfall and local flash flooding from Sunday into Tuesday. Temperatures over the weekend will fall back toward seasonal averages, with a period of well below average readings for much of next week.</p> <p>**Thunderstorms imply strong gusty and erratic winds**</p>					
7. GENERAL SAFETY MESSAGE					
See 206					
8. ATTACHMENTS (check if attached)					
<input checked="" type="checkbox"/>	Organization List (ICS 203)	<input checked="" type="checkbox"/>	Assignment List (ICS 204)	<input checked="" type="checkbox"/>	Communications Plan (ICS 205)
<input checked="" type="checkbox"/>	Incident Map	<input checked="" type="checkbox"/>	Medical Plan (ICS 206)		
9. PREPARED BY: (Planning Section Chief)		Rose Long		Incident Commander Signature: (Digital or Print and Sign) <div style="text-align: center;">  </div>	
10. APPROVED BY: (Incident Commander)		Phillip Daniels			

1. INCIDENT NAME		La Plata Fire		3. OPERATIONAL PERIOD		Date From:	8/23/2025	Date To:	8/23/2025
2. DATE PREPARED		8/22/2025				Time From	700	Time To:	2200
4. INCIDENT AND COMMAND STAFF				8. OPERATIONS SECTION					
Incident Commander/		Phil Daniels		Chief- Field Operations		Mike Evers (t)			
				Chief- Planning Operations		Troy Mueller			
				a. BRANCH					
Deputy				Branch Director					
Safety Officer		David Vitwar		Deputy					
Information Officer		Schelly Olson, Tracy LeClair (V)		Division/Group		D	Justin McArthur/ John Cheroske (t)		
Liaison Officer		Shannon Byerly		Division/Group		Y	Larry Long		
				Division/Group					
5. AGENCY/ORGANIZATION REPRESENTATIVES				Division/Group					
Agency/Organization		Representative		Division/Group					
USFS Agency Admin.		Carl Bauer		Division/Group					
USFS Dep. Agency Admin.		Patrick Mercer		b. BRANCH					
USFS Agency Rep		Tighe Stoyonoft		Branch Director					
Leadville Fire Department		Daniel Dailey		Deputy					
Lake County Sheriff		Heath Speckman		Division/Group					
Chaffee County Sheriff		Andy Rohrich		Division/Group					
				Division/Group					
				Division/Group					
6. PLANNING SECTION				Division/Group					
Chief		Rose Long							
Deputy				c. BRANCH					
Resources Unit		Heather Davis (t)		Branch Director					
Situation Unit		Kristin Kolanoski (t)(v)		Deputy					
Documentation Unit				Division/Group					
Technical Specialists		Ben Lawrence, Adrien Hoff (COTAK)		Division/Group					
Fire Behaviour Analyst				Division/Group					
G.I.S. Specialist				Division/Group					
				Division/Group					
Resource Advisor									
7. LOGISTICS SECTION				d. AIR OPERATIONS BRANCH					
Chief		Tony Mule		Air Operations Br. Dir.					
Deputy		Ryan Kolling		Air Tactical Group Sup.					
a. SUPPORT BRANCH				Air Support Group Sup.					
Director									
Supply Unit									
Base Camp Manager									
Ground Support Unit				9. FINANCIAL/ADMINISTRATION SECTION					
b. SERVICE BRANCH				Chief		Denise Tomlin, Allen Gallamore (v)			
Director				Deputy		Wilson Branch (v)			
Communications Unit		Jim Rooney, Chris Reynolds		Time Unit					
Medical Unit				Procurement Unit					
Food Unit				Compensation/Claims Unit					
				Cost Unit					
10. PREPARED BY		Position:		Planning Section Chief		Name:		Rose Long	

Spot Forecast for La Plata Fire...Team CO IMT
National Weather Service Pueblo CO
232 PM MDT Fri Aug 22 2025

Forecast is based on forecast start time of 1500 MDT on August 22.
If conditions become unrepresentative, contact the National Weather Service.

.DISCUSSION...

Upper ridge of high pressure will flatten and shift to the south, allowing northwest flow aloft to settle in across the state and the fire area. This shift in the weather pattern will mean cooler and wetter conditions for the fire.

Persistent northwest flow with embedded waves will then lead to daily showers and thunderstorms from Saturday into next Friday, with the greatest chance for wetting rainfall and local flash flooding from Sunday into Tuesday. Temperatures over the weekend will fall back toward seasonal averages, with a period of well below average readings for much of next week.

****Thunderstorms imply strong gusty and erratic winds****

.SATURDAY...

Sky/weather.....Partly sunny (67 percent) until 1200, then mostly cloudy. Chance of rain showers until 1200. Slight chance of thunderstorms after 0900 until 1200, then rain showers with thunderstorms likely.

Max temperature.....65-68F.

Min humidity.....34-39 percent.

Wind (20 ft).....North-northwest 6-10 mph. Gusty and erratic winds expected near thunderstorms after 0900.

Transport winds.....Northwest around 6 mph until 1000, then north around 13 mph.

Smoke dispersal.....Poor until 1000, then fair until 1200, then good.

.SATURDAY NIGHT...

Sky/weather.....Mostly cloudy (58 percent). Scattered thunderstorms early in the evening, then scattered showers and isolated thunderstorms late in the evening. Isolated showers after midnight.

Min temperature.....40-43F.

Max humidity.....90-95 percent.

Chc of wetting rain.30 percent.

20-foot winds.....Southeast around 5 mph with gusts to around 20 mph shifting to the southwest after midnight.

15K FT MSL Winds....Northwest around 14 mph.

Mixing height.....7500 ft agl until 1900, then 2500 ft agl.

Transport winds.....East around 14 mph until 2000. West around 10 mph after 0500.

Smoke dispersal.....Poor.

.SUNDAY...

Sky/weather.....Partly sunny (64 percent). Scattered showers and isolated thunderstorms in the morning, then showers with numerous thunderstorms in the afternoon.

Max temperature.....60-65F.

Min humidity.....35-40 percent.

Chc of wetting rain.80 percent.

20-foot winds.....West around 5 mph. Gusts up to 20 mph in the afternoon.

15K FT MSL Winds....Northwest 10-20 mph becoming west 5-15 mph in the afternoon.

Mixing height.....2500 ft agl until 1000, then 5500 ft agl until 1100, then 8500 ft agl until 1200, then 10500 ft agl until 1500, then 8000 ft agl until 1700, then 5000 ft agl.

Transport winds.....West around 13 mph.

Smoke dispersal.....Fair until 1200, then good.

.MONDAY...Showers with numerous thunderstorms. Lows 39 to 44. Highs 60-65. Southwest winds around 5 mph.

RH: Morning Max 80-85% / Afternoon Min 40-45%

POP: 85-90% QPF amount: .4"-.5"

.TUESDAY...Numerous thunderstorms. Lows 38 to 43. Highs 57-62. South winds around 5 mph.

RH: Morning Max 80-85% / Afternoon Min 40-45%

POP: 85-90% QPF amount: .3"-.4"

\$\$

Forecaster...MOORE

Requested by...Rose Long

Type of request...WILDFIRE

.TAG 2520375.1/PUB

.DELDT 08/22/25

.FormatterVersion 2.0.0

Assignment List (ICS 204-WF)

1. BRANCH		2. DIVISION/GROUP/STAGING		D			
3. INCIDENT NAME		4. OPERATIONAL PERIOD		Date From:	8/23/2025	Date To:	8/23/2025
La Plata Fire				Time From	0700	Time To:	2200
5. OPERATIONAL PERSONNEL							
Operations Section Chief		Troy Mueller (9/2)		Division/Group Supervisor		Justin McArthur (8/29)/ John Cheroske (t) (9/2)	
Branch Director				Field Operations Section Chief		Mike Evers (t) (9/2)	
6. RESOURCES ASSIGNED TO THIS PERIOD							
Resource Identifier	Leader	LWD	No. of Persons	Radio Frequency	Remarks		
C-5 CR2I Lost River	Aaron Vasilis	9/1	20				
C-6 CR2I NOCO	John Hill/Daniel Cobos (t)	9/2	20				
C-4 CRW1 Smokey Bear	J.J. Rue	9/2	21				
E-1 Leadville E-603	Fritz Rogowski	9/1	4				
E-2 AMB2-AMB04	Lawrence Buckman	9/2	2				
7. TACTICAL ASSIGNMENTS							
<p>TASK: Construct direct and indirect fireline to guide fire behavior toward natural or constructed barriers.</p> <p>PURPOSE: Keep fire from impacting values at risk.</p> <p>END STATE: Fireline in the correct location with the right dimensions to contain the fire.</p>							
8. SPECIAL INSTRUCTIONS							
<p>Ambulance located at La Plata TH, see medical plan for more information.</p> <p>Request for Helicopter must go through Pueblo Dispatch on Quail.</p> <p>Medic Larry Buckman is inserted with crews in Division D.</p>							
9. COMMUNICATIONS SUMMARY							
Name	Channel	Function	Rx Frequency	Rx Tone	Tx Frequency	Tx Tone	Remarks
DFPCTAC1	1	TAC	154.68	156.7	154.68	156.7	DIV 1
10. PREPARED BY		Position:		Resource Unit Leader		Name: Heather Davis	

Assignment List (ICS 204-WF)										
1. BRANCH					2. DIVISION/GROUP/STAGING		Y			
3. INCIDENT NAME				4. OPERATIONAL PERIOD		Date From:		8/23/2025	8/23/2025	
La Plata Fire						Time From		0700	Time To:	2200
5. OPERATIONAL PERSONNEL										
Operations Section Chief		Troy Mueller (9/2)			Division/Group Supervisor		Larry Long (9/2)			
Branch Director					Field Operations Section Chief		Mike Evers (t) (9/2)			
6. RESOURCES ASSIGNED TO THIS PERIOD										
Resource Identifier	Leader	LWD	No. of Persons	Radio Frequency		Remarks				
E-3 ENG15 Black Forest	Joe Lynch	9/3	3							
E-12 DFPC 3111	Drew Gettel	9/4	4							
7. TACTICAL ASSIGNMENTS										
TASK: Maintain operational readiness and provide support for helispot H4. PURPOSE: Respond as needed to IA requests, while maintaining support to helispot H4. END STATE: Provide incident support.										
8. SPECIAL INSTRUCTIONS										
Ambulance located at La Plata TH, see medical plan for more information. Request for Helicopter must go through Pueblo Dispatch on Quail.										
9. COMMUNICATIONS SUMMARY										
Name	Channel	Function		Rx Frequency	Rx Tone	Tx Frequency	Tx Tone	Remarks		
DFPCTAC2	2	TAC		154.6950	156.7	154.6950	156.7	DIV 2		
10. PREPARED BY		Position:		Resource Unit Leader			Name:		Heather Davis	



AIR OPERATIONS SUMMARY (ICS 220 WF)

1. Incident Name / Number La Plata CO-PSF-001374		2. Date Prepared 08/22/25		3. Time Prepared 1900		4. Prepared By T Mueller OPS	
5. Sunrise 0625		Sunset 1950		Pumpkin Time Sunset +30		6. Shutdown 2020	
7. Operational Period - Date 08/23/25		8. Operational Period - Time 0700-2200					

9. General Remarks, Safety Notes, Hazards, Air Operations Special Equipment, etc. All request for helicopters made through Pueblo Dispatch on Quail.		10. Helibase Information Name: Latitude: Longitude:		11. Temp. Flight Restriction (TFR) NOTAM: Altitude: Frequency: A/A Rotor Hours:	
--	--	--	--	--	--

13. Incident Frequencies	RX	Tone	TX	Tone	AM/FM/Digital	14. Position	Name	Phone
A/A TFR						AOBD		
A/A Rotor						AOBDt		
						ASGS		
A/G Command	166.6125		166.6125			HEBM		
A/G Tactical						HEBmt		
						ATGS		
					FM	HLCO		
					FM	UAO		

12. Extraction/Medevac Information			
FAA#:	Medevac	Short-haul	Holst
Phone:			
Location:			
Capabilities			
Request Incident Personnel Extraction/Medevac Through: Pueblo Dispatch 719-553-1600			

15. Equipment/Supplies

16. HELICOPTERS					
FAA #	TYPE	Make/Model	Helibase	Start	Avail.
9CH 1		Chinook	Leadville	0800	

17. AERIAL SUPERVISION: AIR ATTACK/HELICOPTER COORDINATOR					
FAA #	Call Sign	Make/Model	Base	Start	Avail.

18. UNMANNED AIRCRAFT SYSTEMS (UAS)					
Identifier	Cat./Type	Make/Model	Location	Start	Avail.

INCIDENT RADIO COMMUNICATIONS PLAN				Incident Name LA PLATA FIRE		Date/Time Prepared 08/22/25 @ 1800		Operational Period Date/Time 08/23/25 0700 to 08/23/25 2300	
Ch #	Function	Channel Name	Assignment	RX Freq	RX Tone/NAC	TX Freq	TX Tone/NAC	Mode A, D, M	Remarks
1	TAC	DFPCTAC1	DIV 1	154.6800	156.7	154.6800	156.7	A	DIV 1
2	TAC	DFPCTAC2	DIV 2	154.6950	156.7	154.6950	156.7	A	DIV 2
3	TAC	DFPCTAC3	DIV 3	154.8300	156.7	154.8300	156.7	A	DIV 3
4	TAC	DFPCTAC4	DIV 4	154.9400	156.7	154.9400	156.7	A	DIV 4
5	CMD-1	CMD-1	OPERATIONS	159.4575	156.7	155.4975	156.7	A	
6	CMD-2	CMD-2	OPERATIONS	170.4125	114.8	165.9625	114.8	A	LINKED TO CMD-3
7	CMD-3	CMD-3	OPERATIONS	173.7750	114.8	171.4250	114.8	A	LINKED TO CMD-2
8	FOREST NET	QUAIL	FOREST Net	171.5750	110.9	162.6125	110.9	A	FOREST Net
9	NOT USED	NOT USED	---	---	---	---	---	--	
10	NOT USED	NOT USED	---	---	---	---	---	--	
11	NOT USED	NOT USED	---	---	---	---	---	--	
12	NOT USED	NOT USED	---	---	---	---	---	--	
13	NOT USED	NOT USED	---	---	---	---	---	--	
14	AIR EVAC	VMED28	ALL	155.3400	---	155.3400	156.7	A	Aero Medical Evac
15	A/G 1	A/G 1	Air to Ground	166.6125	---	166.6125	---	A	Air to Ground Primary
16	AIRGUARD	AIRGUARD	Emergency A/G	168.6250	---	168.6250	110.9	A	Emergency A/G
Prepared By (Communications Unit)				Last Clone Name: 081925					
Jim Rooney COMIL				24 Hour Communications Phone: 720-393-0875					

Use Human Repeaters when and where necessary.

Use only Channels assigned.

Controlled Unclassified Information//Basic

NFES 1330



Incident Management Team Contact List

Phil Daniels- Incident Commander- 720.315.4240
Troy Mueller- Operations Section Chief (Planning)- 620-960-1659
Mike Evers- Operations Section Chief (Field)- 719-640-8991
Larry Long- Division Supervisor- 719-492-0233
John Cheroske- Division Supervisor- 970-729-2165
David Vitwar- Safety Officer- 720-654-6841
Tony Mule - Logistics- 719-221-5789
Ryan Kolling - Logistics - 720-594-9612
Denise Tomlin- Finance-720-548-7644
Allen Gallamore- Finance-303-489-8060
Shannon Byerly - Liasion Officer - 719-221-5456
Schelly Olson- Information- 720-371-9358
Tracy LeClair- Information- 970-841-9230
Rose Long- Plans Section Chief- 720-219-0357

Demob Tips

*****Note: If you have cell phone coverage and have nothing to return, you will not physically need to come to demob.*****

After being notified by your supervisor of your tentative release date:

Step 1. Return all supplies, radios, etc. that were checked out. If you have no items to return, you can complete Finance and Demob virtually.

Step 2. Submit time for all personnel and equipment to Finance per directions in IAP.

Step 4. Complete Demob Checkout Sheet using QR code on the cover of the IAP. If unable to use, see demob. Once demob receives confirmation from Finance and your demob checkout sheet has been electronically submitted, you will be released in the system.

SAFE TRAVELS!!








IAP

La Plata

CO-PSF-001374

8/23/2025 Day

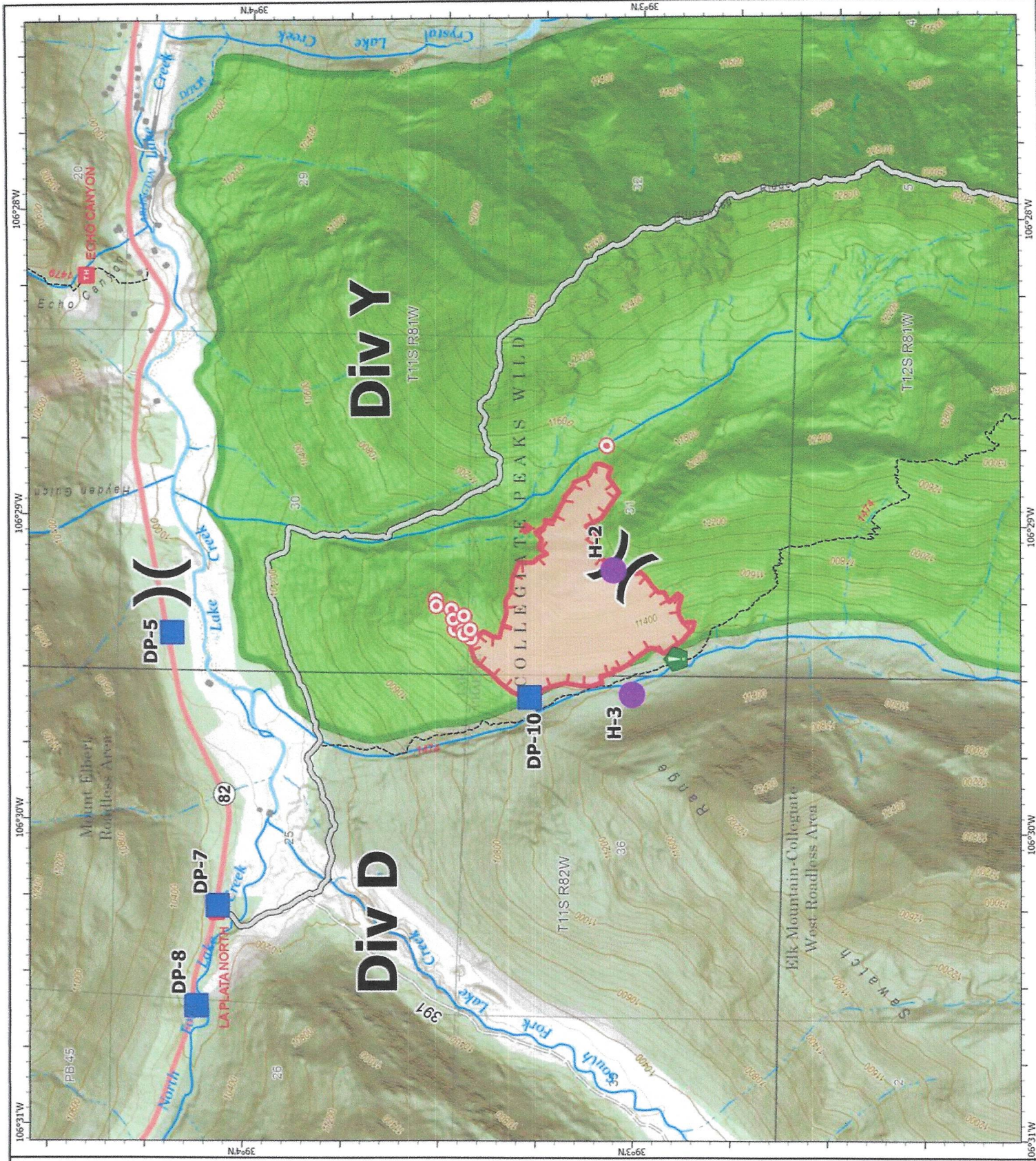
133 acres at 08/22/2025 1303 MDT

-  USA Structures
-  Helispot
-  Division Break
-  Hot Spot - Spot Fire
-  Drop Point
-  Resource Location
-  Access Route
-  Wildfire Perimeter
-  Uncontained Fire Edge
-  Trail
-  Secondary Highway
-  Road, Not Maintained for Passenger Car
-  Road, Dirt/Gravel
-  USFS Roadless Areas
-  FS Wilderness Area
-  Forest Service Lands
-  Administrative FS Boundary



Miles

1:24,000 | La Plata GIS | 8/22/2025 1417
 Notes: Item MDA Input 8/22/2025 1:50 PM
 Earth Awareness 1000 1000 1000 1000



Incident: La Plata Fire	Date: 08/23/2025	Operational Period: 0700-2200
-----------------------------------	----------------------------	---



SAFETY MESSAGE

Fire fighter safety comes first on every fire, every time

SOME OF THE MANY HAZARDS YOU ARE EXPOSED TO

STEEP TERRAIN SPEED ON HIGHWAY 82 THUNDERSTORMS with LIGHTNING & RAIN HIGH ALTITUDE!!!!	DEHYDRATION BUCKET DROPS FIRE WEAKENED TREES & SNAGS FIRE BEHAVIOR	CHAINSaws COMMUNICATIONS CONSTRUCTION ZONE TWIN LAKES TOWN LONG MEDICAL EVAC
---	--	--

Operational Tempo

Operational tempo is the speed and intensity of our actions relative to the speed and intensity of unfolding events in the operational environment. Within this context, fire leaders plan, prepare, and execute operations proactively, rather than continuously being forced to react to the environment.

Successfully maintaining operational tempo is not solely about speeding up to match or exceed the pace of the environment. It is also about knowing when operations should slow down and why.

We are most vulnerable to accidents and errors when the operational tempo is changing, especially when it changes quickly. Maintaining good situation awareness in spite of change in operational tempo represents a considerable challenge.

The key to managing operational tempo successfully is monitoring the changing environment and capabilities of the team and then applying good judgment to determine whether to push forward or pull back while making necessary planning and resource adjustments.

Discussion Points:

- How do you maintain situational awareness in different operational tempos?
- When do you see this occurring most?
- Give an example of when you experienced changes in operational tempo that resulted in you feeling uncomfortable

Your Safety Officer: David Vitwar



MEDICAL PLAN (ICS 206WF)

ROCKY MOUNTAIN INCIDENT MANAGEMENT

1. Incident/Project Name			2. Operational Period				
La Plata Fire			August 23, 2025				
3. Ambulance Services							
Name	Location	Phone/Frequency	Advanced Life Support (ALS) Yes No				
St. Vincent	822 W. 4th St, Leadville, CO 80461	911 / 719-486-7144	X				
4. AIR AMBULANCE SERVICES							
Name	Phone/Freq	Type of Aircraft & Capability					
Flight For Life	720-321-3900	AS 350 A-Star, Air Evacuation					
6BH – Short Haul (Incident Ship)		Quail FS Repeater & AG 1 Type 3 with Short Haul					
5. Hospitals							
Name	Address	Travel Time GND AIR		Phone	Helipad Yes No	Level of Care Facility	
St. Vincent Health	816 W 4th Street Leadville, CO 80461	35 mins	15	719-486-0230	X	Critical Care- Yes	
Heart of the Rockies	1000 Rush Drive Salida, CO 81201	60 mins	30 mins	719-530-2200	X	Level 4 Trauma Center	
UC Health Burn Center Anschutz Medical Ctr	12505 E 16th Ave. Aurora, CO 80045	3 hrs	1 hr	720-848-0000	X	Level 1 Trauma Center Critical Care-Yes Burn Center- Yes	
*Travel times are from staging at La Plata Trail Head to the facility and DO NOT include response time to the incident.							
6. Division Branch Group							
Delta	EMS Responders & Capability:		Delta Medic (ALS)				
	Equipment Available on Scene:		ALS Ambo #4 at H-1				
	Medical Emergency Channel:		Command Medical Evac: VMED 28				
Yankee	EMS Responders & Capability:		Check on division resources for capabilities & Delta Medic available				
	Equipment Available on Scene:		ALS Ambo #4 at H-1				
	Medical Emergency Channel:		Command Medical Evac: VMED 28				
ICP	EMS Responders & Capability:						
	Equipment Available on Scene:						
	Medical Emergency Channel:		Call 911				
	EMS Responders & Capability:						
	Equipment Available on Scene:						
	Medical Emergency Channel:						
	EMS Responders & Capability:						
	Equipment Available on Scene:						
	Medical Emergency Channel:						
	EMS Responders & Capability:						
	Equipment Available on Scene:						
	Medical Emergency Channel:						
7. Prepared By (Medical Unit Leader)		8. Date/Time		9. Reviewed By (Safety Officer)		10. Date/Time	
David Vitwar		8/22/25 - 1730		David Vitwar		8/22/25 - 1800	

MEDICAL PLAN (ICS 206 WF)

Controlled Unclassified Information//Basic

Medical Incident Report

FOR A NON-EMERGENCY INCIDENT, WORK THROUGH CHAIN OF COMMAND TO REPORT AND TRANSPORT INJURED PERSONNEL AS NECESSARY.

FOR A MEDICAL EMERGENCY: IDENTIFY ON-SCENE INCIDENT COMMANDER BY NAME AND POSITION AND ANNOUNCE "MEDICAL EMERGENCY" TO INITIATE RESPONSE FROM IMT COMMUNICATIONS/DISPATCH.

Use the following items to communicate situation to communications/dispatch.

1. CONTACT COMMUNICATIONS / DISPATCH (Verify correct frequency prior to starting report)

Ex: "Communications, Div. Alpha. Stand-by for Emergency Traffic."

2. INCIDENT STATUS: Provide incident summary (including number of patients) and command structure.

Ex: "Communications, I have a Red priority patient, unconscious, struck by a falling tree. Requesting air ambulance to Forest Road 1 at (Lat./Long.) This will be the Trout Meadow Medical, IC is TFLD Jones. EMT Smith is providing medical care."

Severity of Emergency / Transport Priority	<input type="checkbox"/> RED / PRIORITY 1 Life or limb threatening injury or illness. Evacuation need is IMMEDIATE Ex: Unconscious, difficulty breathing, bleeding severely, 2° – 3° burns more than 4 palm sizes, heat stroke, disoriented. <input type="checkbox"/> YELLOW / PRIORITY 2 Serious injury or illness. Evacuation may be DELAYED if necessary. Ex: Significant trauma, unable to walk, 2° – 3° burns not more than 1-3 palm sizes. <input type="checkbox"/> GREEN / PRIORITY 3 Minor injury or illness. Non-Emergency transport Ex: Sprains, strains, minor heat-related illness.
Nature of Injury or Illness & Mechanism of Injury	Brief Summary of Injury or Illness (Ex: Unconscious, Struck by Falling Tree)
Evacuation Request	Air Ambulance / Short Haul/Hoist Ground Ambulance / Other
Patient Location	Descriptive Location & Lat. / Long. (WGS84)
Incident Name	Geographic Name + Medical (Ex: Trout Meadow Medical)
On-Scene Incident Commander	Name of on-scene IC of Incident within an Incident (Ex: TFLD Jones)
Patient Care	Name of Care Provider (Ex: EMT Smith)

3. INITIAL PATIENT ASSESSMENT: Complete this section for each patient as applicable (start with the most severe patient)

Patient Assessment: See IRPG PAGE 108

Treatment:

4. EVACUATION PLAN:

Evacuation Location (if different): (Descriptive Location (drop point, intersection, etc.) or Lat. / Long.) Patient's ETA to Evacuation Location:

Helispot / Extraction Site Size and Hazards:

5. ADDITIONAL RESOURCES / EQUIPMENT NEEDS:

Example: Paramedic/EMT, crews, immobilization devices, AED, oxygen, trauma bag, IV/fluid(s), splints, rope rescue, wheeled litter, HAZMAT, extrication

6. COMMUNICATIONS: Identify State Air/Ground EMS Frequencies and Hospital Contacts as applicable

Function	Channel Name/Number	Receive (RX)	Tone/NAC *	Transmit (TX)	Tone/NAC *
COMMAND					
AIR-TO-GRND					
TACTICAL					

7. CONTINGENCY: Considerations: If primary options fail, what actions can be implemented in conjunction with primary evacuation method? Be thinking ahead..

8. ADDITIONAL INFORMATION: Updates/Changes, etc.

REMEMBER: Confirm ETAs of resources ordered. Act according to your level of training. Be Alert. Keep Calm. Think Clearly. Act Decisively.

