



# Incident Action Plan

LA PLATA FIRE  
CO-PSF-001374

**Operational Period:**

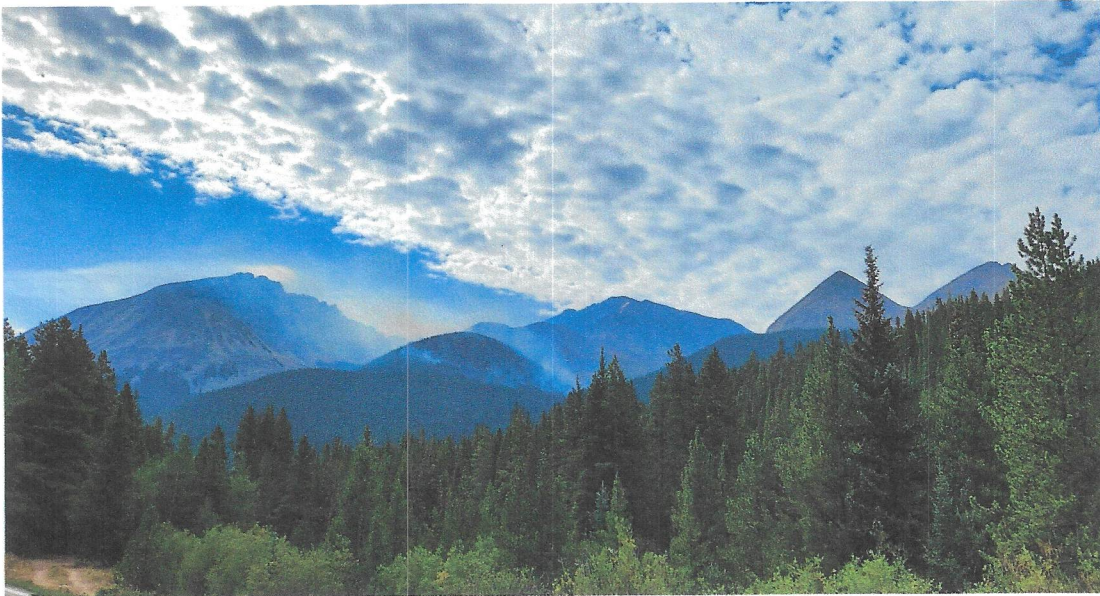
8/24/2025

to

8/24/2025

700

2200



**Incident Commander:**

Phillip Daniels



**SCAN THE QR CODE TO ACCESS:**

*INCIDENT CHECK-IN FORM*

*IAPs*

*MAPS*


*CREW TIME REPORTS*

*EQUIPMENT SHIFT TICKETS*

*DEMOB FORM*

*AND MORE!!!*

## Incident Objectives (ICS 202-WF)

<b>1. INCIDENT NAME</b>	LA PLATA FIRE	<b>2. DATE PREPARED</b>	8/23/2025	<b>3. FIRE SIZE</b>	133.0 ac
<b>4. OPERATIONAL PERIOD</b>	<b>Date From:</b>	8/24/2025	<b>Date To:</b>	8/24/2025	
	<b>Time From:</b>	0700	<b>Time To:</b>	2200	
<b>5. GENERAL CONTROL OBJECTIVES FOR THE INCIDENT (include alternatives)</b>					
<p><b>Prioritize Safety:</b> Ensure firefighter and public safety by implementing tactical operations that align with the values at risk, offer a high likelihood of success, and deploy the appropriate mix and quantity of resources to achieve mission objectives effectively.</p> <p><b>Strategic Suppression:</b> Guide fire behavior toward natural or constructed barriers, or into areas with more favorable fuel conditions, to minimize threats to private property, communities, infrastructure, watersheds, and other critical assets. When appropriate utilize the Incident Strategic Alignment Process to determine priorities and to create a longer term strategic plan.</p> <p><b>Cost-Conscious Management:</b> Apply cost containment principles to manage incident expenses, ensuring that financial decisions reflect the scale and significance of the values at risk.</p> <p><b>Collaborative Engagement:</b> Strengthen partnerships across agencies, governments, and firefighting entities through transparent practices, consistent communication, and shared decision-making.</p>					
<b>6. WEATHER FORECAST (Y/N)</b>					
<p>A wetter and cooler pattern will continue through the next several days, with widespread showers and thunderstorms each afternoon and evening. The greatest chance for wetting rainfall and local flash flooding will be in the Sunday through Tuesday time period, with slightly lower chances for heavy rainfall by the end of the week. Temperatures will be near seasonal averages on Sunday, then generally cooler than average for much of the week. Relative humidity recovery will be very good to excellent the next several days.</p>					
<b>7. GENERAL SAFETY MESSAGE</b>					
See 206					
<b>8. ATTACHMENTS (check if attached)</b>					
<input checked="" type="checkbox"/>	Organization List (ICS 203)	<input checked="" type="checkbox"/>	Assignment List (ICS 204)	<input checked="" type="checkbox"/>	Communications Plan (ICS 205)
<input checked="" type="checkbox"/>	Incident Map	<input checked="" type="checkbox"/>	Medical Plan (ICS 206)	<input type="checkbox"/>	
<input type="checkbox"/>		<input type="checkbox"/>		<input type="checkbox"/>	
<b>9. PREPARED BY:</b> (Planning Section Chief)		Rose Long		<b>Incident Commander Signature:</b> (Digital or Print and Sign) 	
<b>10. APPROVED BY:</b> (Incident Commander)		Phillip Daniels			



<b>1. INCIDENT NAME</b>		La Plata Fire	<b>3. OPERATIONAL PERIOD</b>		<b>Date From:</b> 8/24/2025	<b>Date To:</b> 8/24/2025
<b>2. DATE PREPARED</b>		8/23/2025			<b>Time From:</b> 700	<b>Time To:</b> 2200
<b>4. INCIDENT AND COMMAND STAFF</b>			<b>8. OPERATIONS SECTION</b>			
<b>Incident Commander/</b>		Phil Daniels	<b>Chief- Field Operations</b>		Mike Evers (t)	
			<b>Chief- Planning Operations</b>		Troy Mueller	
			<b>a. BRANCH</b>			
<b>Deputy</b>			<b>Branch Director</b>			
<b>Safety Officer</b>		David Vitwar	<b>Deputy</b>			
<b>Information Officer</b>		Schelly Olson, Tracy LeClair (V)	<b>Division/Group</b>	<b>D</b>	Justin McArthur	
<b>Liaison Officer</b>		Shannon Byerly	<b>Division/Group</b>	<b>Y</b>	Larry Long	
			<b>Division/Group</b>			
<b>5. AGENCY/ORGANIZATION REPRESENTATIVES</b>			<b>Division/Group</b>			
<b>Agency/Organization</b>		<b>Representative</b>	<b>Division/Group</b>			
USFS Agency Admin.		Carl Bauer	<b>Division/Group</b>			
USFS Dep. Agency Admin.		Patrick Mercer	<b>b. BRANCH</b>			
USFS Agency Rep		Tighe Stoyonoft	<b>Branch Director</b>			
Leadville Fire Department		Daniel Dailey	<b>Deputy</b>			
Lake County Sheriff		Heath Speckman	<b>Division/Group</b>			
Chaffee County Sheriff		Andy Rohrich	<b>Division/Group</b>			
			<b>Division/Group</b>			
			<b>Division/Group</b>			
			<b>Division/Group</b>			
<b>6. PLANNING SECTION</b>			<b>Division/Group</b>			
<b>Chief</b>		Rose Long				
<b>Deputy</b>			<b>c. BRANCH</b>			
<b>Resources Unit</b>		Heather Davis (t)	<b>Branch Director</b>			
<b>Situation Unit</b>		Kristin Kolanoski (t)(v)	<b>Deputy</b>			
<b>Documentation Unit</b>			<b>Division/Group</b>			
<b>Technical Specialists</b>		Ben Lawrence, Adrien Hoff (COTAK)	<b>Division/Group</b>			
<b>Fire Behaviour Analyst</b>			<b>Division/Group</b>			
<b>G.I.S. Specialist</b>			<b>Division/Group</b>			
			<b>Division/Group</b>			
<b>Resource Advisor</b>		Kate Demorest				
<b>7. LOGISTICS SECTION</b>			<b>d. AIR OPERATIONS BRANCH</b>			
<b>Chief</b>		Tony Mule	<b>Air Operations Br. Dir.</b>			
<b>Deputy</b>		Ryan Kolling	<b>Air Tactical Group Sup.</b>			
<b>a. SUPPORT BRANCH</b>			<b>Air Support Group Sup.</b>			
<b>Director</b>						
<b>Supply Unit</b>		Leon Montoya				
<b>Base Camp Manager</b>						
<b>Ground Support Unit</b>			<b>9. FINANCIAL/ADMINISTRATION SECTION</b>			
<b>b. SERVICE BRANCH</b>			<b>Chief</b>		Denise Tomlin, Allen Gallamore (v)	
<b>Director</b>			<b>Deputy</b>		Wilson Branch (v)	
<b>Communications Unit</b>		Jim Rooney, Chris Reynolds	<b>Time Unit</b>		Janelle Valladares	
<b>Radio Operator</b>		Ben Forehand	<b>Procurement Unit</b>			
<b>Medical Unit</b>			<b>Compensation/Claims Unit</b>			
<b>Food Unit</b>			<b>Cost Unit</b>			
<b>10. PREPARED BY</b>		<b>Position:</b> Planning Section Chief	<b>Name:</b>		Rose Long	

**Spot Forecast for La Plata Fire...Team CO IMT**  
**National Weather Service Pueblo CO**  
**305 PM MDT Sat Aug 23 2025**

Forecast is based on forecast start time of 1500 MDT on August 23.

**.DISCUSSION...**

A wetter and cooler pattern will continue through the next several days, with widespread showers and thunderstorms each afternoon and evening. The greatest chance for wetting rainfall and local flash flooding will be in the Sunday through Tuesday time period, with slightly lower chances for heavy rainfall by the end of the week. Temperatures will be near seasonal averages on Sunday, then generally cooler than average for much of the week. Relative humidity recovery will be very good to excellent the next several days.

**.SUNDAY...**

Sky/weather.....Mostly cloudy(69 percent). Chance of rain showers until 1200, then rain showers with thunderstorms likely.  
Max temperature.....69F.  
Min humidity.....39-44 percent.  
Wind (20 ft).....Northwest 4-8 mph. Gusty and erratic winds expected near thunderstorms after 1200.  
Transport winds.....Northwest around 11 mph.  
Smoke dispersal.....Poor to good.

**.MONDAY...**Showers with numerous thunderstorms. Lows 42 to 54. Highs 55 to 65. Southwest winds around 10 mph.

RH: Morning Max 85-90 percent / Afternoon Min 45-50 percent  
POP: 85-90% Rainfall amount: 0.25 to 0.50 inch

**.TUESDAY...**Numerous thunderstorms. Lows 42 to 53. Highs 55 to 65. South winds around 10 mph.

RH: Morning Max 85-90 percent / Afternoon Min 45-50 percent  
POP: 85-90% Rainfall amount: around 0.25 inch

**.WEDNESDAY...**Numerous thunderstorms. Lows 42 to 53. Highs 58 to 70. Southwest winds around 10 mph.

RH: Morning Max 85-90 percent / Afternoon Min 45-50 percent  
POP: 75-80% Rainfall amount: around 0.25 inch

\$\$

Forecaster...PETERSEN  
Requested by...Rose Long  
Type of request...WILDFIRE  
.TAG 2520375.2/PUB  
.DELDLT 08/23/25  
.FormatterVersion 2.0.0



## Assignment List (ICS 204-WF)

<b>1. BRANCH</b>		<b>2. DIVISION/GROUP/STAGING</b>		D			
<b>3. INCIDENT NAME</b>		<b>4. OPERATIONAL PERIOD</b>		<b>Date From:</b>	8/24/2025	<b>Date To:</b>	8/24/2025
La Plata Fire				<b>Time From</b>	0700	<b>Time To:</b>	2200
<b>5. OPERATIONAL PERSONNEL</b>							
<b>Operations Section Chief</b>		Troy Mueller (9/2)		<b>Division/Group Supervisor</b>		Justin McArthur (8/29)	
<b>Branch Director</b>				<b>Field Operations Section Chief</b>		Mike Evers (t) (9/2)	
<b>6. RESOURCES ASSIGNED TO THIS PERIOD</b>							
<b>Resource Identifier</b>	<b>Leader</b>	<b>LWD</b>	<b>No. of Persons</b>	<b>Radio Frequency</b>		<b>Remarks</b>	
C-5 CR2I Lost River	Aaron Vasilis	9/1	20				
C-6 CR2I NOCO	John Hill/Daniel Cobos (t)	9/2	20				
C-4 CRW1 Smokey Bear	J.J. Rue	9/2	21				
E-1 Leadville E-603	Fritz Rogowski	9/1	4				
O-24 REM2 West Metro	John Gulledge	8/31	4				
E-2 AMB2-AMBO4	Lawrence Buckman	9/2	2				
<b>7. TACTICAL ASSIGNMENTS</b>							
<p>TASK: Construct direct and indirect fireline to guide fire behavior toward natural or constructed barriers.</p> <p>PURPOSE: Keep fire from impacting values at risk.</p> <p>END STATE: Fireline in the correct location with the right dimensions to contain the fire.</p>							
<b>8. SPECIAL INSTRUCTIONS</b>							
<p>Ambulance located at La Plata TH, see medical plan for more information.</p> <p>Request for Helicopter must go through Pueblo Dispatch on Quail.</p> <p>Medic Larry Buckman is inserted with crews in Division D.</p>							
<b>9. COMMUNICATIONS SUMMARY</b>							
<b>Name</b>	<b>Channel</b>	<b>Function</b>	<b>Rx Frequency</b>	<b>Rx Tone</b>	<b>Tx Frequency</b>	<b>Tx Tone</b>	<b>Remarks</b>
DFPCTAC1	1	TAC	154.68	156.7	154.68	156.7	DIV 1
<b>10. PREPARED BY</b>		<b>Position:</b>			<b>Name:</b>		
		Resource Unit Leader			Heather Davis		

Assignment List (ICS 204-WF)									
1. BRANCH			2. DIVISION/GROUP/STAGING			Y			
3. INCIDENT NAME			4. OPERATIONAL PERIOD		Date From:	8/24/2025		8/24/2025	
La Plata Fire					Time From	0700	Time To:	2200	
5. OPERATIONAL PERSONNEL									
Operations Section Chief		Troy Mueller (9/2)			Division/Group Supervisor		Larry Long (9/2)		
Branch Director					Field Operations Section Chief		Mike Evers (t) (9/2)		
6. RESOURCES ASSIGNED TO THIS PERIOD									
Resource Identifier	Leader	LWD	No. of Persons	Radio Frequency		Remarks			
E-3 ENG15 Black Forest	Joe Lynch	9/3	3						
E-12 DFPC 3111	Drew Gettel	9/4	4						
7. TACTICAL ASSIGNMENTS									
TASK: Maintain operational readiness and provide support for helispot H4. PURPOSE: Respond as needed to IA requests, while maintaining support to helispot H4. END STATE: Provide incident support.									
8. SPECIAL INSTRUCTIONS									
Ambulance located at La Plata TH, see medical plan for more information. Request for Helicopter must go through Pueblo Dispatch on Quail.									
9. COMMUNICATIONS SUMMARY									
Name	Channel	Function		Rx Frequency	Rx Tone	Tx Frequency	Tx Tone	Remarks	
DFPCTAC2	2	TAC		154.6950	156.7	154.6950	156.7	DIV 2	
10. PREPARED BY		Position:			Resource Unit Leader		Name:	Heather Davis	





## AIR OPERATIONS SUMMARY (ICS 220 WF)

1. Incident Name / Number La Plata CO-PSF-001374		2. Date Prepared 08/23/25	3. Time Prepared 1900	4. Prepared By T Mueller OPS
5. Sunrise 0625	Sunset 1950	Pumpkin Time Sunset +30	6. Shutdown 2020	7. Operational Period - Date 08/24/25
		8. Operational Period - Time 0700-2200		

9. General Remarks, Safety Notes, Hazards, Air Operations Special Equipment, etc. All requests for helicopters made through Pueblo Dispatch on Quail.		10. Helibase Information Name:  Latitude:  Longitude:	11. Temp. Flight Restriction (TFR) NOTAM: 5/0181 Altitude: Surface-17000FT Frequency: A/A Rotor 119.750 Hours: 0600-2100
---	--	--	--

13. Incident Frequencies	RX	Tone	TX	Tone	AM/FM/Digital	14. Position	Name	Phone
A/A TFR						A0BD		
A/A Rotor						A0BDt		
						ASGS		
A/G Command	166.6125		166.6125			HEBM		
A/G Tactical						HEBMT		
						ATGS		
					FM	HLCO		
					FM	UAO		

12. Extraction/Medevac Information			
FAA#:	Medevac	Short-haul	Hoist
Phone:	5HX	X	
Location:	Grand Jct		
Capabilities			
Request Incident Personnel Extraction/Medevac Through: Pueblo Dispatch 719-553-1600			

15. Equipment/Supplies

16. HELICOPTERS					
FAA #	TYPE	Make/Model	Helibase	Start	Remarks
9CH	1	Chinook	Leadville	0800	Bucket work
5HX	3	AirBus/ B3	Grand Jct	0800	Short Haul

17. AERIAL SUPERVISION: AIR ATTACK/HELICOPTER COORDINATOR					
FAA #	Call Sign	Make/Model	Base	Start	Remarks

18. UNMANNED AIRCRAFT SYSTEMS (UAS)					
Identifier	Cat./Type	Make/Model	Location	Start	Remarks



INCIDENT RADIO COMMUNICATIONS PLAN				Incident Name <b>LA PLATA FIRE</b>		Date/Time Prepared <b>08/23/25 @ 1800</b>		Operational Period Date/Time <b>08/24/25 0700 to 08/24/25 2300</b>	
Ch #	Function	Channel Name	Assignment	RX Freq	RX Tone/NAC	TX Freq	Tx Tone/NAC	Mode A, D, M	Remarks
1	TAC	DFPCTAC1	DIV 1	154.6800	156.7	154.6800	156.7	A	DIV 1
2	TAC	DFPCTAC2	DIV 2	154.6950	156.7	154.6950	156.7	A	DIV 2
3	TAC	DFPCTAC3	DIV 3	154.8300	156.7	154.8300	156.7	A	DIV 3
4	TAC	DFPCTAC4	DIV 4	154.9400	156.7	154.9400	156.7	A	DIV 4
5	CMD-1	NOT USED	NOT USED	159.4575	156.7	155.4975	156.7	A	DFPC REPEATER
6	CMD-2	CMD-2	OPERATIONS	170.4125	114.8	165.9625	114.8	A	LINKED TO CMD-3
7	CMD-3	CMD-3	OPERATIONS	173.7750	114.8	171.4250	114.8	A	LINKED TO CMD-2
8	FOREST NET	QUAIL	FOREST Net	171.5750	110.9	162.6125	110.9	A	FOREST Net
9	NOT USED	NOT USED	---	---	---	---	---	--	
10	NOT USED	NOT USED	---	---	---	---	---	--	
11	NOT USED	NOT USED	---	---	---	---	---	--	
12	NOT USED	NOT USED	---	---	---	---	---	--	
13	NOT USED	NOT USED	---	---	---	---	---	--	
14	AIR EVAC	VMED28	ALL	155.3400	---	155.3400	156.7	A	Aero Medical Evac
15	A/G 1	A/G 1	Air to Ground	166.6125	---	166.6125	---	A	Air to Ground Primary
16	AIRGUARD	AIRGUARD	Emergency A/G	168.6250	---	168.6250	110.9	A	Emergency A/G
Prepared By (Communications Unit)				Last Clone Zone Name: <b>082425</b>					
Jim Rooney COMIL				24 Hour Communications Phone: <b>720-393-0875</b>					

Use Human Repeaters when and where necessary.

Use only Channels assigned.

Controlled Unclassified Information//Basic

NFES 1330





## Incident Management Team Contact List

Phil Daniels- Incident Commander- 720.315.4240  
Troy Mueller- Operations Section Chief (Planning)- 620-960-1659  
Mike Evers- Operations Section Chief (Field)- 719-640-8991  
Larry Long- Division Supervisor- 719-492-0233  
David Vitwar- Safety Officer- 720-654-6841  
Tony Mule - Logistics- 719-221-5789  
Ryan Kolling - Logistics - 720-594-9612  
Denise Tomlin- Finance-720-548-7644  
Allen Gallamore- Finance-303-489-8060  
Shannon Byerly - Liaison Officer - 719-221-5456  
Schelly Olson- Information- 720-371-9358  
Tracy LeClair- Information- 970-841-9230  
Rose Long- Plans Section Chief- 720-219-0357

## Demob Tips

**\*\*\*Note: If you have cell phone coverage and have nothing to return, you will not physically need to come to demob.\*\*\***

*After being notified by your supervisor of your tentative release date:*

Step 1. Return all supplies, radios, etc. that were checked out. If you have no items to return, you can complete Finance and Demob virtually.

Step 2. Submit time for all personnel and equipment to Finance per directions in IAP.

Step 4. Complete Demob Checkout Sheet using QR code on the cover of the IAP. If unable to use, see demob. Once demob receives confirmation from Finance and your demob checkout sheet has been electronically submitted, you will be released in the system.

**SAFE TRAVELS!!**





# IAP

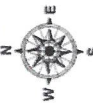
La Plata

CO-PSF-001374

8/24/2025 Day

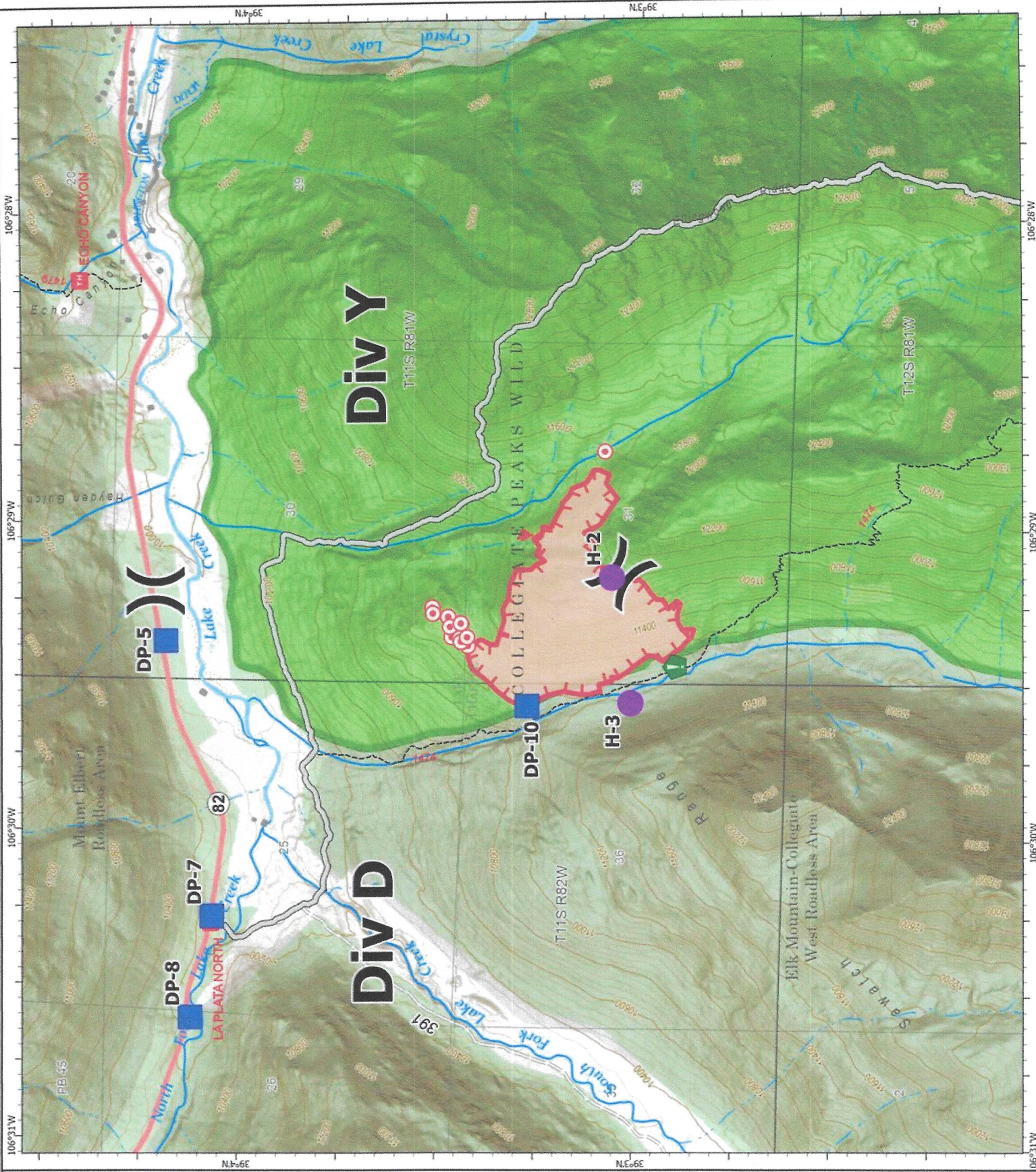
133 acres at 08/22/2025 1303 MDT

-  USA Structures
-  Helispot
-  Division Break
-  Hot Spot - Spot Fire
-  Drop Point
-  Resource Location
-  Access Route
-  Temporary Flight Restriction
-  Wildfire Perimeter
-  Uncontained Fire Edge
-  Trail
-  Secondary Highway
-  Road, Not Maintained for Passenger Car
-  Road, Dirt/Gravel
-  USFS Roadless Areas
-  FS Wilderness Area
-  Forest Service Lands
-  Administrative FS Boundary



0 0.5 Miles

1:24,000 (La Plata GIS) 8/22/2025 11:15  
North Arrow: 100.31 degrees (all mag. decl.)





<b>Incident:</b> La Plata Fire	<b>Date:</b> 08/24/2025	<b>Operational Period:</b> 0700-2200
-----------------------------------	----------------------------	---



## ***SAFETY MESSAGE***

*Fire fighter safety comes first on every fire, every time*

### ***SOME OF THE MANY HAZARDS YOU ARE EXPOSED TO***

SPEED ON HIGHWAY 82 THUNDERSTORMS with LIGHTNING & RAIN	HIGH ALTITUDE!! SNAGS STEEP TERRAIN	COMMUNICATIONS TWIN LAKES TOWN LONG MEDICAL EVAC
---	---	--

### ***Leader's Intent***

We provide leader's intent so people closest to the scene of action can adapt plans and exercise initiative to accomplish the objective when unanticipated opportunities arise or when the original plan no longer suffices.

Leader's intent is a crucial element of effective operations because it reduces internal friction and empowers subordinates – even when chaotic conditions prevent the chain of command from communicating effectively.

Leader's intent is a clear, concise statement about what people must do to succeed in their assignments. It delineates three essential components:

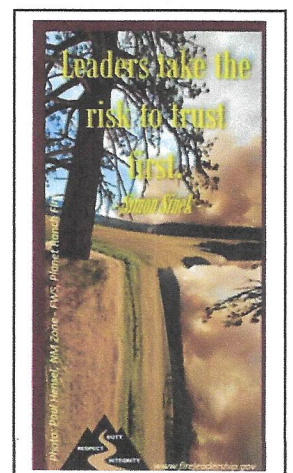
1. **Task** - what is the objective or goal of the assignment?
2. **Purpose** – why the assignment needs to be done.
3. **End state** – how the situation should look when the assignment is successfully completed.

**What is your Leader's intent for you? If you don't know... ask!**

### ***Model Professionalism***

Each of us represents Team CO and the La Plata Fire. While assigned to this fire the expectation is that all resources model Duty, Integrity, and Respect. Personnel will be fit and available for duty while assigned.

*Your Safety Officer:* David Vitwar





# MEDICAL PLAN (ICS 206WF)

## ROCKY MOUNTAIN INCIDENT MANAGEMENT

<b>1. Incident/Project Name</b>				<b>2. Operational Period</b>			
<b>La Plata Fire</b>				<b>August 24, 2025</b>			
<b>3. Ambulance Services</b>							
Name	Location	Phone/Frequency		Advanced Life Support (ALS) Yes                      No			
<b>St. Vincent</b>	<b>822 W. 4<sup>th</sup> St, Leadville, CO 80461</b>	<b>911 / 719-486-7144</b>		<b>X</b>			
<b>4. AIR AMBULANCE SERVICES</b>							
Name	Phone/Freq	Type of Aircraft & Capability					
<b>Flight For Life</b>	<b>720-321-3900</b>	<b>AS 350 A-Star, Air Evacuation</b>					
<b>5. Hospitals</b>							
Name	Address	Travel Time GND                      AIR		Phone	Helipad Yes                      No		Level of Care Facility
<b>St. Vincent Health</b>	<b>816 W 4<sup>th</sup> Street Leadville, CO 80461</b>	<b>35 mins</b>	<b>15</b>	<b>719-486-0230</b>	<b>X</b>		<b>Critical Care- Yes</b>
<b>Heart of the Rockies</b>	<b>1000 Rush Drive Salida, CO 81201</b>	<b>60 mins</b>	<b>30 mins</b>	<b>719-530-2200</b>	<b>X</b>		<b>Level 4 Trauma Center</b>
<b>UC Health Burn Center Anschutz Medical Ctr</b>	<b>12505 E 16<sup>th</sup> Ave. Aurora, CO 80045</b>	<b>3 hrs</b>	<b>1 hr</b>	<b>720-848-0000</b>	<b>X</b>		<b>Level 1 Trauma Center Critical Care-Yes Burn Center- Yes</b>
<b>*Travel times are from staging at La Plata Trail Head to the facility and DO NOT include response time to the incident.</b>							
<b>6. Division   Branch   Group</b>							
<b>Delta</b>	EMS Responders & Capability:		Delta Medic (ALS) & West Metro REMS (ALS)				
	Equipment Available on Scene:		Ambo #4 at H-1 or Hwy 82				
	Medical Emergency Channel:		Command                      Medical Evac: VMED 28				
<b>Yankee</b>	EMS Responders & Capability:		Check on division resources for EMTs and Equipment				
	Equipment Available on Scene:		Ambo #4 at H-1 or Hwy 82				
	Medical Emergency Channel:		Command                      Medical Evac: VMED 28				
<b>ICP</b>	EMS Responders & Capability:						
	Equipment Available on Scene:						
	Medical Emergency Channel:		Call 911				
	EMS Responders & Capability:						
	Equipment Available on Scene:						
	Medical Emergency Channel:						
	EMS Responders & Capability:						
	Equipment Available on Scene:						
	Medical Emergency Channel:						
	EMS Responders & Capability:						
	Equipment Available on Scene:						
	Medical Emergency Channel:						
<b>7. Prepared By (Medical Unit Leader)</b>		<b>8. Date/Time</b>		<b>9. Reviewed By (Safety Officer)</b>		<b>10. Date/Time</b>	
<b>David Vitwar</b>		<b>8/23/25 - 1500</b>		<b>David Vitwar</b>		<b>8/23/25 - 1800</b>	



# MEDICAL PLAN (ICS 206 WF)

Controlled Unclassified Information//Basic

## Medical Incident Report

**FOR A NON-EMERGENCY INCIDENT, WORK THROUGH CHAIN OF COMMAND TO REPORT AND TRANSPORT INJURED PERSONNEL AS NECESSARY.**

**FOR A MEDICAL EMERGENCY: IDENTIFY ON-SCENE INCIDENT COMMANDER BY NAME AND POSITION AND ANNOUNCE "MEDICAL EMERGENCY" TO INITIATE RESPONSE FROM IMT COMMUNICATIONS/DISPATCH.**

**Use the following items to communicate situation to communications/dispatch.**

**1. CONTACT COMMUNICATIONS / DISPATCH** (Verify correct frequency prior to starting report)

Ex: "Communications, Div. Alpha. Stand-by for Emergency Traffic."

**2. INCIDENT STATUS:** Provide incident summary (including number of patients) and command structure.

Ex: "Communications, I have a Red priority patient, unconscious, struck by a falling tree. Requesting air ambulance to Forest Road 1 at (Lat./Long.) This will be the Trout Meadow Medical, IC is TFLD Jones. EMT Smith is providing medical care."

Severity of Emergency / Transport Priority	<input type="checkbox"/> <b>RED / PRIORITY 1 Life or limb threatening injury or illness. Evacuation need is IMMEDIATE</b> Ex: Unconscious, difficulty breathing, bleeding severely, 2° – 3° burns more than 4 palm sizes, heat stroke, disoriented. <input type="checkbox"/> <b>YELLOW / PRIORITY 2 Serious Injury or illness. Evacuation may be DELAYED if necessary.</b> Ex: Significant trauma, unable to walk, 2° – 3° burns not more than 1-3 palm sizes. <input type="checkbox"/> <b>GREEN / PRIORITY 3 Minor Injury or illness. Non-Emergency transport</b> Ex: Sprains, strains, minor heat-related illness.
Nature of Injury or Illness & Mechanism of Injury	Brief Summary of Injury or Illness (Ex: Unconscious, Struck by Falling Tree)
Evacuation Request	Air Ambulance / Short Haul/Hoist Ground Ambulance / Other
Patient Location	Descriptive Location & Lat. / Long. (WGS84)
Incident Name	Geographic Name + Medical (Ex: Trout Meadow Medical)
On-Scene Incident Commander	Name of on-scene IC of Incident within an Incident (Ex: TFLD Jones)
Patient Care	Name of Care Provider (Ex: EMT Smith)

**3. INITIAL PATIENT ASSESSMENT:** Complete this section for each patient as applicable (start with the most severe patient)

Patient Assessment: See IRPG PAGE 108

Treatment:

**4. EVACUATION PLAN:**

Evacuation Location (if different): (Descriptive Location (drop point, intersection, etc.) or Lat. / Long.) Patient's ETA to Evacuation Location:

Helispot / Extraction Site Size and Hazards:

**5. ADDITIONAL RESOURCES / EQUIPMENT NEEDS:**

Example: Paramedic/EMT, crews, immobilization devices, AED, oxygen, trauma bag, IV/fluid(s), splints, rope rescue, wheeled litter, HAZMAT, extrication

**6. COMMUNICATIONS: Identify State Air/Ground EMS Frequencies and Hospital Contacts as applicable**

Function	Channel Name/Number	Receive (RX)	Tone/NAC *	Transmit (TX)	Tone/NAC *
COMMAND					
AIR-TO-GRND					
TACTICAL					

**7. CONTINGENCY: Considerations:** If primary options fail, what actions can be implemented in conjunction with primary evacuation method? Be thinking ahead..

**8. ADDITIONAL INFORMATION:** Updates/Changes, etc.

**REMEMBER:** Confirm ETAs of resources ordered. Act according to your level of training. Be Alert. Keep Calm. Think Clearly. Act Decisively.

[illegible]