

Field Maps Overview

This document highlights creating a NIFC account in ArcGIS Online, covers Authenticator applications, logging into Field Maps, changing units/settings for incidents, gaining access to data and incident maps, downloading maps, turning on and off layers, applying filters, finding coordinates for a location, adding data, editing data, deleting data, and syncing.

Creating a NIFC Account (Authenticator App Required)

NIFC is using an ArcGIS Online (AGOL) Support Hub. Here, you can request a new account, get support through the request form, read the acceptable use policy, and the NIFC AGOL rules of behavior. NIFC periodically removes or deletes accounts that are inactive, or if they haven't been setup with 2 Factor Authentication. One way to check this is to try resetting your password and see if you get an email (personal or government, depending on how you set it up).



1. Scan the QR code and select the New Account Request Form on the NIFC AGOL Hub site (support-nifc.hub.arcgis.com).
2. Fill out the Microsoft Form. A government/agency named email address or a personal email address with attached Interagency Qualification Card (Red Card) is required before your account is created.
3. Download one of the Approved 2 Factor Authentication Applications onto your mobile device or tablet. This device will need to be connected to the internet to setup (ethernet, cellular, or wireless). For iOS, 2FA Authenticator, Google Authenticator, and Okta Verify are listed. Microsoft Authenticator is also an option for Android.
4. Check your email for an activation link for your NIFC account. Priorities are given for those on active incidents. The link will open in a browser on your mobile device or computer.
5. Set a password for your NIFC Account.
6. 2 Factor Authentication is required for NIFC account creation. If you are using a computer to setup your NIFC account, you can scan the QR code from your mobile device to setup 2 Factor Authentication. If you are using a mobile device to setup your NIFC account, you can copy the code into your Authenticator App to setup 2 Factor Authentication. Processes may vary depending on the application.
7. Save your NIFC account recovery codes. It may be a good idea to take a picture of them or a screenshot on your phone in case you should ever need them.

Your organization requires Multifactor Authentication (MFA)

After completing the configuration, expect to complete additional security steps whenever you sign in.

Install a supported authenticator app to your device. This will enable you to receive verification codes. Follow these steps to add an extra level of security to your account. Once you're finished, you'll be asked for additional security information each time you sign in to your account from any computer or device.

Esri supports authenticator apps using a Time-based One Time Password (TOTP) algorithm.

[Learn more](#)

[Android](#) [iOS](#)

[Google Authenticator](#)

[2FA Authenticator](#)

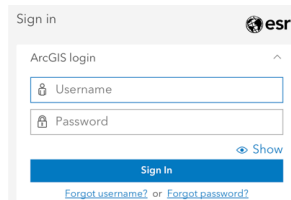
[Okta Verify](#)

[Cancel](#)

[Next](#)

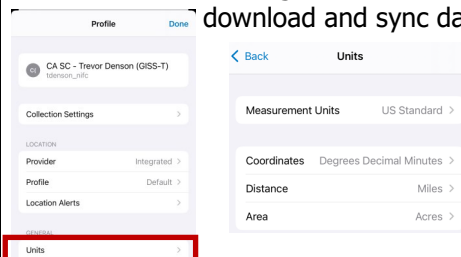
Logging Into ArcGIS Field Maps

1. Open up the Field Maps mobile application on your device.
2. Click the Sign In with ArcGIS Online button. Make sure your device is connected to internet.
3. Enter in your NIFC Username and Password that you set in the previous section. If you forgot your username and or password, you may reset it.
4. Swap over to your 2 Factor Authentication application on your mobile device and enter in the code associated with your NIFC ArcGIS Online Account. These codes change every 30 seconds automatically.
5. If this is the first time you have logged into your account, you may need to verify your email. You may skip this step.
6. Click on the person icon in the upper left hand corner to confirm that you are signed into your NIFC Account.



Units and Settings

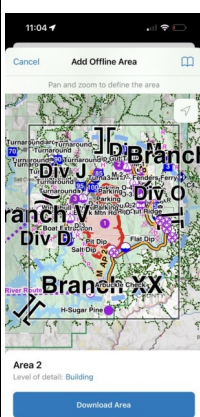
1. Click on the person icon (Profile).
2. Select Units.
3. Set Measurement Units to "US Standard", Coordinates to Degrees Decimal Minutes, Distance to Miles, and Area to Acres. Other Settings can be modified in this menu as needed such as Cellular Data. Cellular Data will allow you to download and sync data without internet connectivity.



Getting Access to Maps

Contact your incident's SITL or GIS Shop to get added to the group for your incident. Then, you will be able to access the Mobile Map and any other map products associated with your incident.

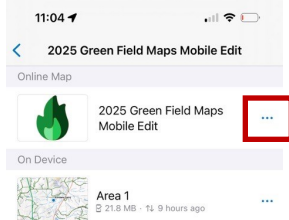
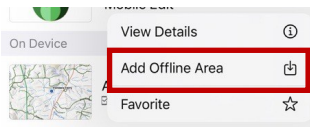
Download an Offline Area



1. Once your NIFC Account is added to an ArcGIS Online Group, maps should be made available for your incident. Locate your incident Group. Example shows the 2025 Green Fire Group and Mobile Edit Map.

2. Select the ... for your map and select Add Offline Area. A map view will open.

3. Pan to your Area of Interest. This is where you will want to be collecting data or viewing data while out in the field. The Level of Detail may need to be expanded in order to capture your area of interest. The larger the area, the longer it will take to download and update. The screenshot to the left shows the "Building" Level of Detail for the 2025 Green fire. Anything within the black outline would be downloaded after selecting "Download Area". If your download fails, try a different Wi-Fi network or signing out of your NIFC account and back in.



Toggle Layers in a Map

1. Click the Layers Stack
2. Toggle On and Off Layers



Structure Triage



Structure Triage



A layer that is greyed out or "Off" will not display on map.

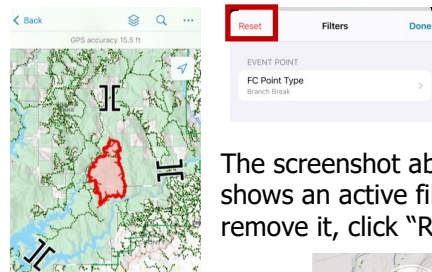
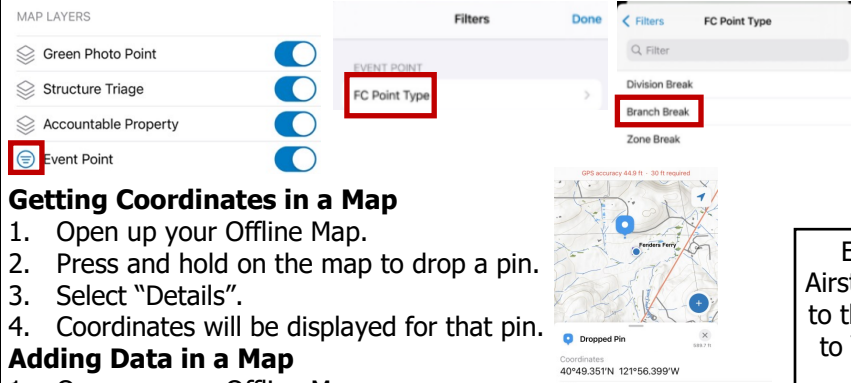
The layer above is set to off and **is not** visible in the map.

The layer above is set to on and **is** visible in the map.

Filter Layers to Only Show Features Matching Criteria in a Map

1. Click the Layers Stack
2. Select the three lines next to the layer name you want to filter. Not all layers will have this symbology for filter. If a layer does not have this symbol, you cannot filter.
3. Select the field you want to filter for
4. Select the values you want to filter for
5. Once complete, Select "Done"
6. Clear the filter by selecting, "Reset"

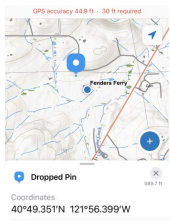
Example below shows the process for displaying the Branch Breaks under the *Event Point* layer.



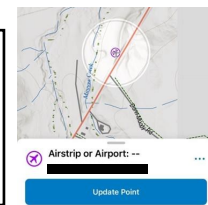
The screenshot above shows an active filter. To remove it, click "Reset".

Getting Coordinates in a Map

1. Open up your Offline Map.
2. Press and hold on the map to drop a pin.
3. Select "Details".
4. Coordinates will be displayed for that pin.



Example (right) shows a Airstrip or Airport being added to the map. Data added is set to "Proposed" by default for review and approval.

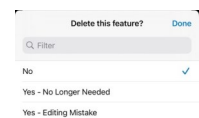


Adding Data in a Map

1. Open up your Offline Map.
2. Press the icon on your map. You may not be able to add data to that map if icon is missing.
3. Select the feature that you want to add. For point features, a single vertex geometry is required. For line features, two or more vertices are required. For polygon features, three or more vertices are required. Use the crosshair to update or add vertices in your map, depending on where your feature is. Once your geometry (shape or location of vertices) are complete, fill in the field portion of your feature. At a minimum, confirm Incident Name, FC Type, and any comments are filled out for your feature. Additional fields may be autopopulated or required.

Edit Data in a Map

1. Data can be edited by pressing and holding on a feature and selecting the "pencil" icon. Both geometry (location of vertex/vertices) and attributes can be edited. Do not update or edit data without prior approval.



Delete Data in a Map

1. Data can be flagged for deletion using one of the "Delete this feature?" field. Select the reason why the feature needs to be removed.

Sync Data in a Map

1. Sync edits for offline areas after returning from the field. Pending edits will look like:

