

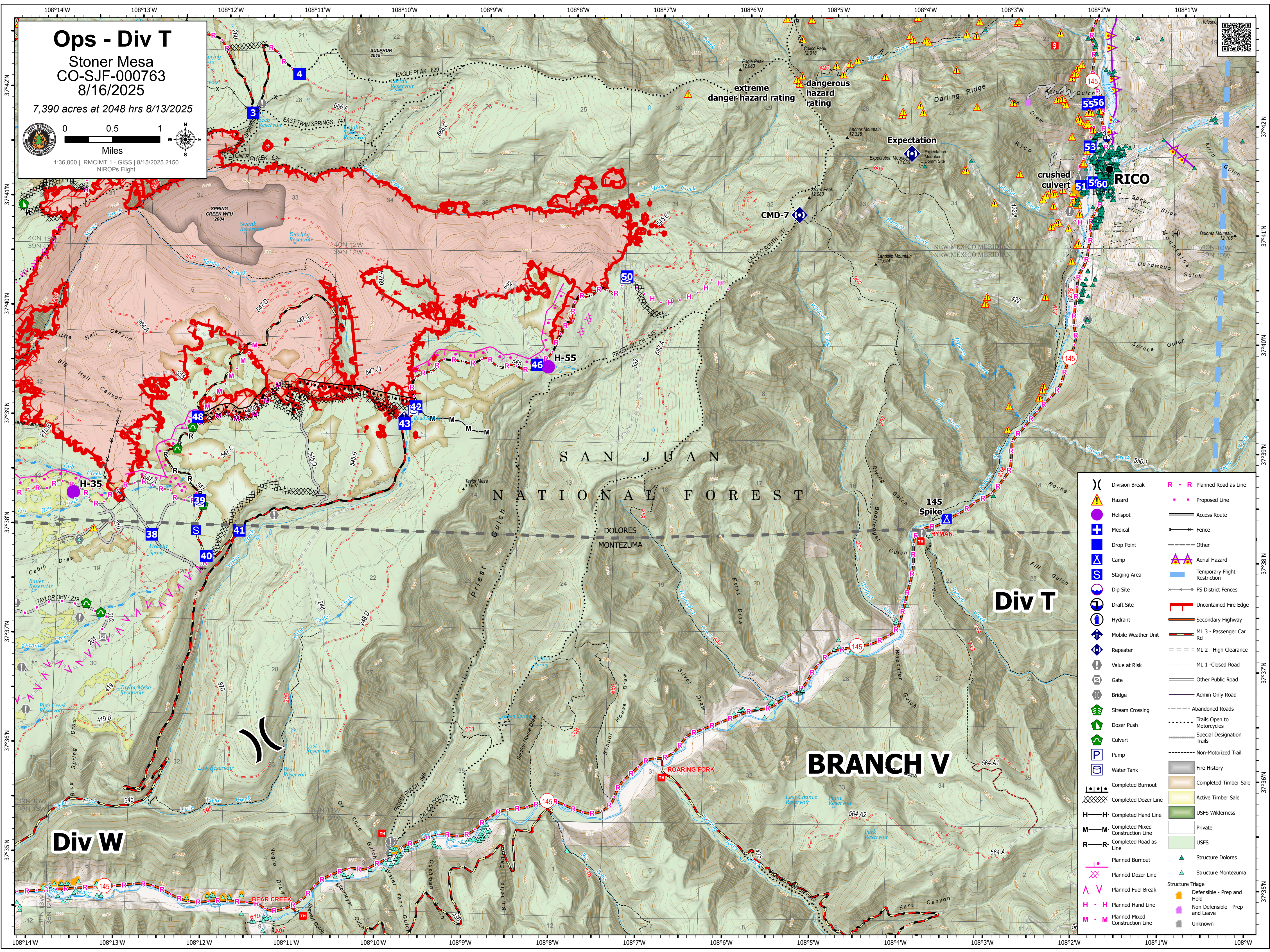
Ops - Div T

Stoner Mesa
CO-SJF-000763
8/16/2025

7,390 acres at 2048 hrs 8/13/2025



0 0.5 1
Miles
1:36,000 | RMCIMT 1 - GISS | 8/15/2025 2150
NIROPs Flight



- | | | | |
|-------|-----------------------------------|-------|---------------------------------|
| () | Division Break | R · R | Planned Road as Line |
| ⚠ | Hazard | — · — | Proposed Line |
| ⚡ | Helispot | — | Access Route |
| + | Medical | X — X | Fence |
| ⬇ | Drop Point | --- | Other |
| ⛴ | Camp | ⚠ | Aerial Hazard |
| S | Staging Area | ⬜ | Temporary Flight Restriction |
| ⬇ | Dip Site | X — X | FS District Fences |
| ⬇ | Draft Site | ⬜ | Uncontained Fire Edge |
| ⬇ | Hydrant | — | Secondary Highway |
| ⬇ | Mobile Weather Unit | — | ML 3 - Passenger Car Rd |
| ⬇ | Repeater | == | ML 2 - High Clearance |
| ⚠ | Value at Risk | --- | ML 1 - Closed Road |
| ⚠ | Gate | — | Other Public Road |
| ⚠ | Bridge | — | Admin Only Road |
| ⚠ | Stream Crossing | --- | Abandoned Roads |
| ⚠ | Dozer Push | ⋯ | Trails Open to Motorcycles |
| ⚠ | Culvert | ⋯ | Special Designation Trails |
| P | Pump | --- | Non-Motorized Trail |
| ⚠ | Water Tank | ⬜ | Fire History |
| ⋯ | Completed Burnout | ⬜ | Completed Timber Sale |
| ⋯ | Completed Dozer Line | ⬜ | Active Timber Sale |
| H — H | Completed Hand Line | ⬜ | USFS Wilderness |
| M — M | Completed Mixed Construction Line | ⬜ | Private |
| R — R | Completed Road as Line | ⬜ | USFS |
| ⋯ | Planned Burnout | ⬜ | Structure Dolores |
| ⋯ | Planned Dozer Line | ⬜ | Structure Montezuma |
| ⋯ | Planned Fuel Break | ⬜ | Structure Triage |
| ⋯ | Planned Hand Line | ⬜ | Defensible - Prep and Hold |
| ⋯ | Planned Mixed Construction Line | ⬜ | Non-Defensible - Prep and Leave |
| | | ⬜ | Unknown |