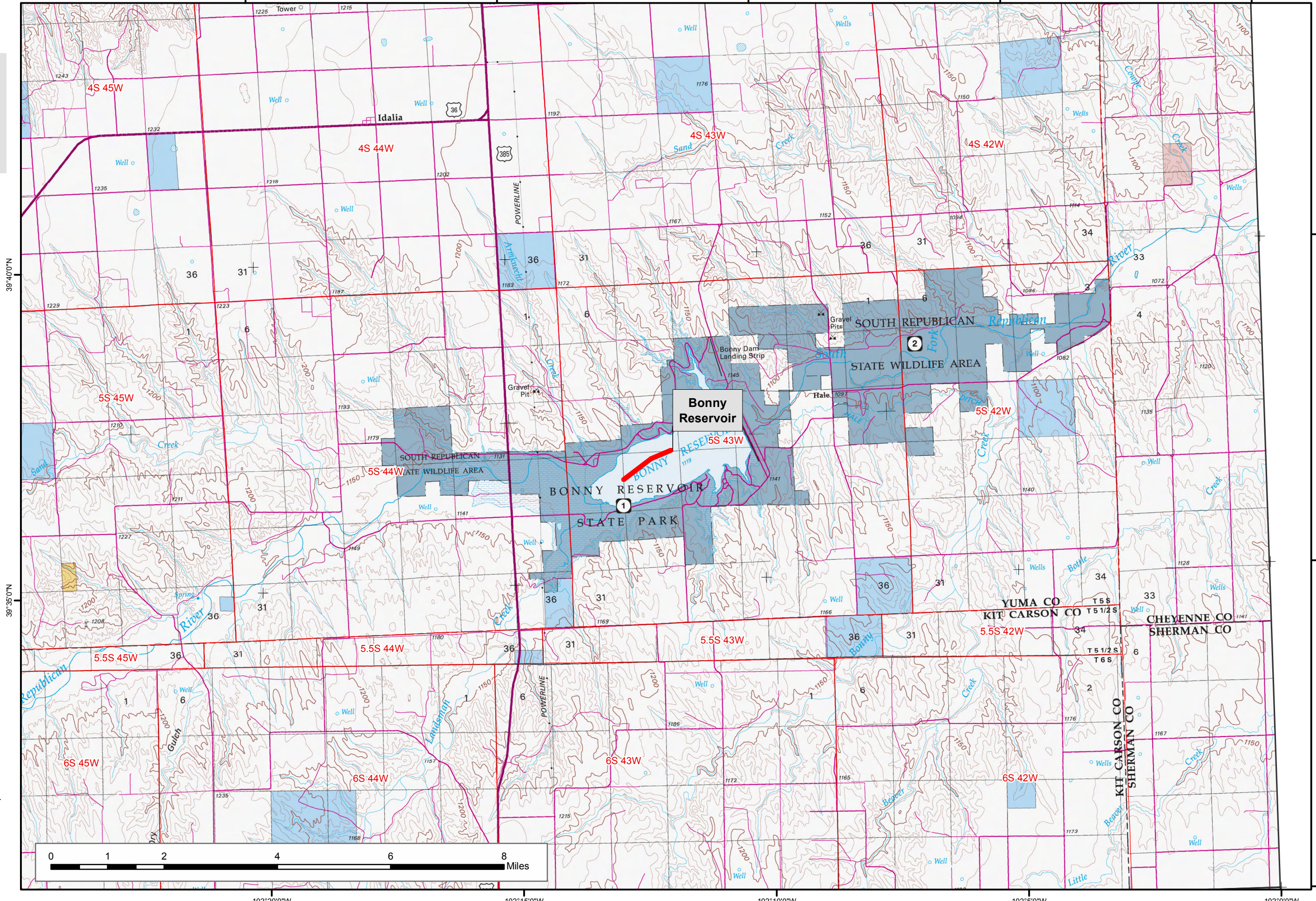




# 2017 Colorado Aquatic Invasive Species Locations

# Map 33: Yuma County

102°20'0"W 102°15'0"W 102°10'0"W 102°5'0"W 102°0'0"W



**Legend**

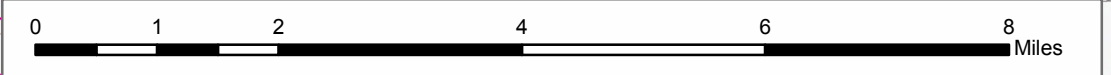
- 2017 AIS Buffered Waterbodies
- Bureau of Land Management
- Private
- State
- State, County, City; Areas

Note:  
 For line features the AIS buffer is one half mile upstream/downstream & 200 feet from riparian zone from line segment.  
 For polygon waterbodies if there were point detections the whole water body was shown as having AIS.

Species may include one of more of the following: Asian Clam, Curly Pondweed, New Zealand Mudsnail, and Rusty Crawfish.

1:100,000  
 Date: 6/12/2017, LJ Datum: NAD83

No warranty is made by the Bureau of Land Management as to the accuracy, reliability, or completeness of these data. Original data were compiled from various sources. This information may not meet National Map Accuracy Standards. This project was developed through digital means and may be updated without notice.



102°20'0"W 102°15'0"W 102°10'0"W 102°5'0"W 102°0'0"W

39°40'0"N

39°35'0"N

39°40'0"N

39°35'0"N

39°30'0"N