

**BIGHORN NATIONAL FOREST KNOWN AERIAL HAZARD MAP**  
DO NOT USE FOR NAVIGATIONAL PURPOSES

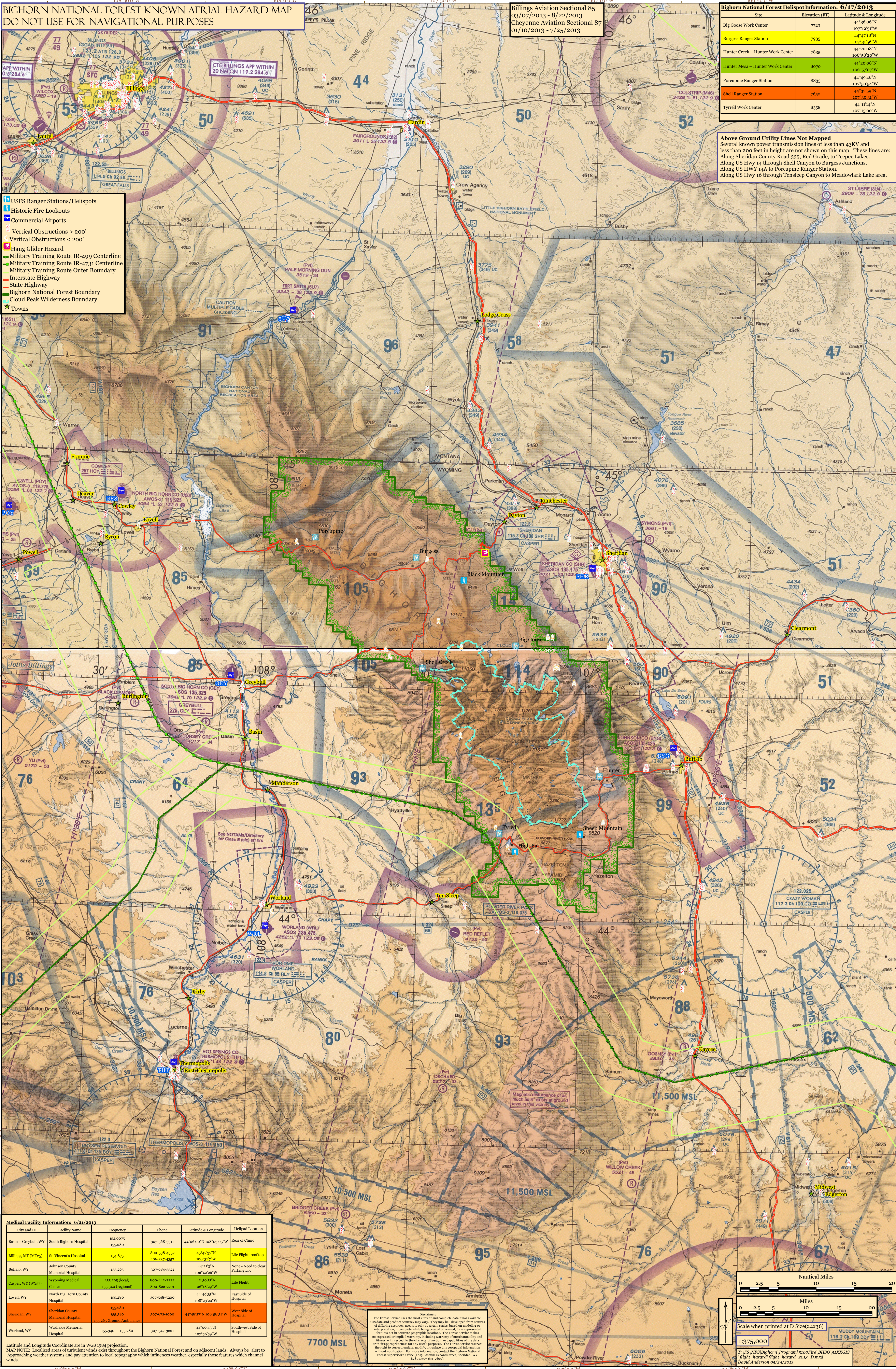
Billings Aviation Sectional 85  
03/07/2013 - 8/22/2013  
Cheyenne Aviation Sectional 87  
01/10/2013 - 7/25/2013

**Bighorn National Forest Helispot Information: 6/17/2013**

Site	Elevation (FT)	Latitude & Longitude
Big Goose Work Center	7743	44°36'06"N 107°23'34"W
Burgess Ranger Station	7935	44°47'48"N 107°21'56"W
Hunter Creek - Hunter Work Center	7835	44°20'08"N 106°58'20"W
Hunter Mesa - Hunter Work Center	8070	44°20'08"N 106°57'07"W
Porcupine Ranger Station	8835	44°49'46"N 107°50'54"W
Shell Ranger Station	7650	44°32'59"N 107°30'31"W
Tyrell Work Center	8358	44°11'14"N 107°15'00"W

**Above Ground Utility Lines Not Mapped**  
Several known power transmission lines of less than 43KV and less than 200 feet in height are not shown on this map. These lines are:  
Along Sheridan County Road 335, Red Grade, to Teepee Lakes.  
Along US Hwy 14 through Shell Canyon to Burgess Junctions.  
Along US HWY 14A to Porcupine Ranger Station.  
Along US Hwy 16 through Tensleep Canyon to Meadowlark Lake area.

- USFS Ranger Stations/Helispots
- Historic Fire Lookouts
- Commercial Airports
- Vertical Obstructions > 200'
- Vertical Obstructions < 200'
- Hang Glider Hazard
- Military Training Route IR-499 Centerline
- Military Training Route IR-4731 Centerline
- Military Training Route Outer Boundary
- Interstate Highway
- State Highway
- Bighorn National Forest Boundary
- Cloud Peak Wilderness Boundary
- Towns

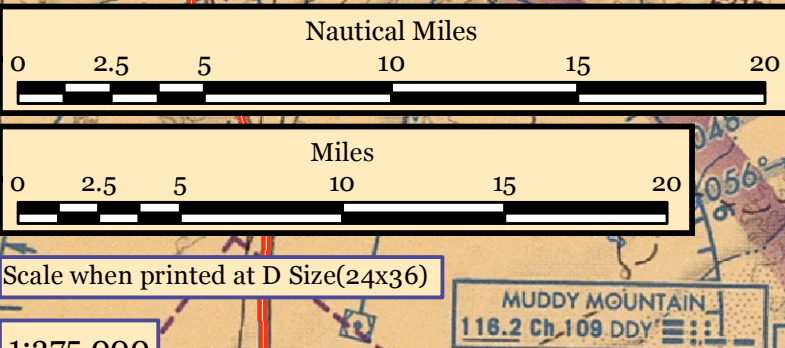


**Medical Facility Information: 6/21/2013**

City and ID	Facility Name	Frequency	Phone	Latitude & Longitude	Helipad Location
Basin - Greybull, WY	South Bighorn Hospital	152.0075 155.280	307-568-3311	44°26'00"N 108°03'05"W	Rear of Clinic
Billings, MT (MT26)	St. Vincent's Hospital	154.875	800-538-4357 406-237-4327	45°47'37"N 108°13'12"W	Life Flight, roof top
Johnson County	Memorial Hospital	155.265	307-684-5521	44°21'3"N 106°42'26"W	None - Need to clear Parking Lot
Casper, WY (WY37)	Wyoming Medical Center	155.295 (local) 155.340 (regional)	800-444-2222 800-822-7201	42°50'31"N 106°48'30"W	Life Flight
Lovell, WY	North Big Horn County Hospital	155.280	307-548-5200	44°49'35"N 108°23'20"W	East Side of Hospital
Sheridan, WY	Sheridan County Memorial Hospital	155.280 155.340	307-672-1000	44°48'27"N 106°58'31"W	West Side of Hospital
Worldard, WY	Washakie Memorial Hospital	155.340 155.280	307-347-3221	44°00'43"N 107°56'00"W	Southwest Side of Hospital

The Forest Service uses the most current and complete data it has available. GIS data and product accuracy may vary. They may be developed from sources of differing accuracy, accuracy at certain scales, based on modeling or interpretation, incomplete while being created or revised, have represented features not in accurate geographic locations. The Forest Service makes no expressed or implied warranty, including warranty of merchantability and fitness, with respect to the character, quality, or accuracy of the data or their appropriateness for any user's purposes. The Forest Service reserves the right to correct, update, modify, or replace this geospatial information without notification. For more information, contact the Bighorn National Forest Supervisor's Office (202) 845-6000, Sheridan, WY (307) 674-2000.

Latitude and Longitude Coordinate are in WGS 1984 projection.  
MAP NOTE: Localized areas of turbulent winds exist throughout the Bighorn National Forest and on adjacent lands. Always be alert to approaching weather systems and pay attention to local topography which influences weather, especially those features which channel winds.



Scale when printed at D Size (24x36)  
1:375,000  
Muddy Mountain  
118.2 Ch 109 DDV  
T:\FS\NFS\Bighorn\Program\5100\Fire\BISO\51XXGIS  
Flight\_Hazard\Flight\_Hazard\_2012\_D.mxd  
David Anderson 05/24/2012