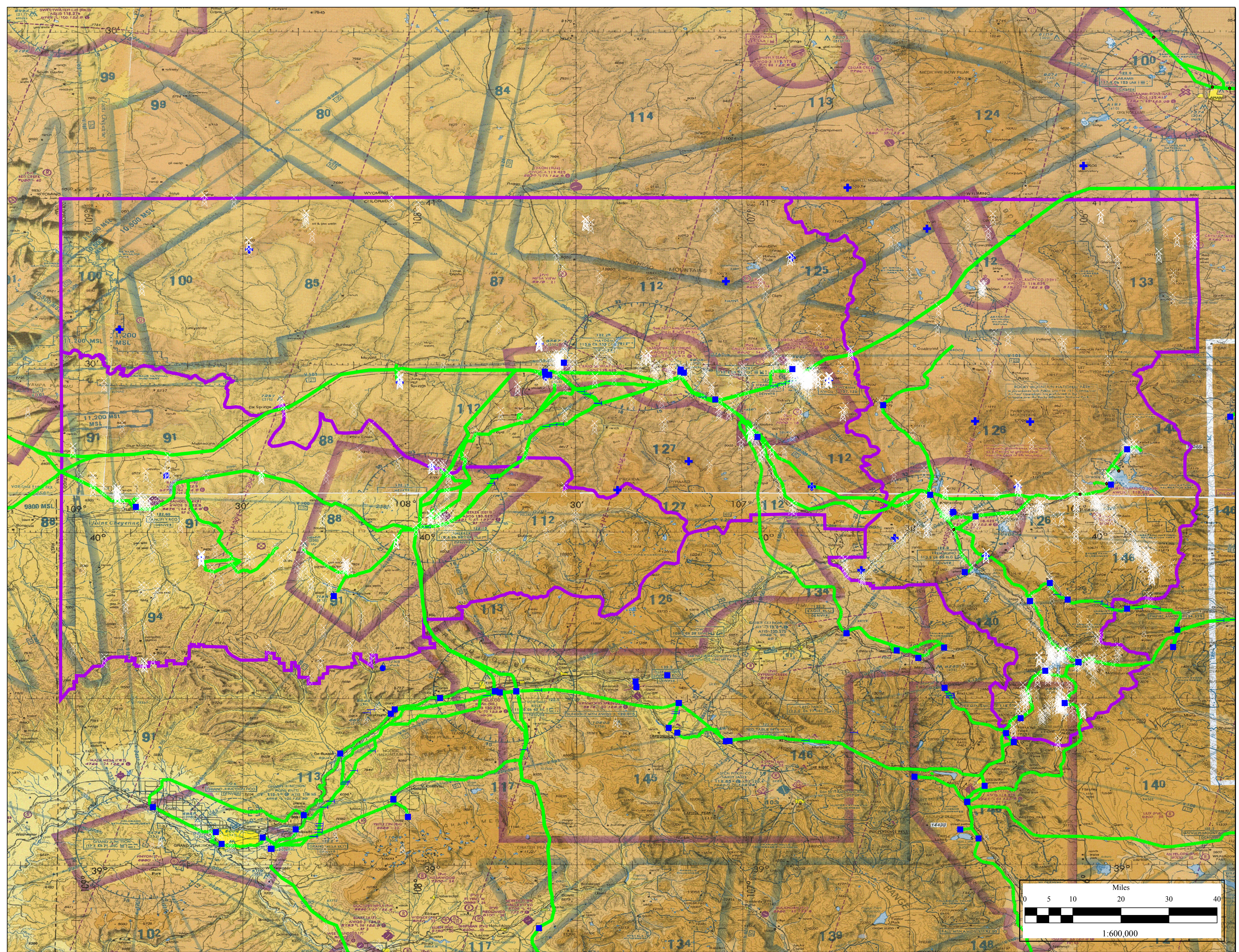


Northwest Colorado Fire Management Unit Aerial Hazard Map

Please return to Craig Dispatch



Legend
Not all hazards may be present on this map

- Aerial Cable
- Bridge
- Structure
- Pylon/Tower
- Smokestack
- Communication Sites (repeaters)
- Linear Hazards
- Field Office Boundary

LEGEND
Airports having Control Towers are shown in blue, all others in magenta. Consult Airport/Facility Directory (AFD) for details involving airport lighting, navigation aids, and services. For additional symbol information refer to the Chart User's Guide.

AIRPORTS

- Other than hard-surfaced
- Hard-surfaced runways 1000 ft. to 8000 ft. in length
- Hard-surfaced runways greater than 8000 ft. or more than one runway length more than 8000 ft.
- Open dot white hard-surfaced runway configuration indicates approximate VOR, VOR-DME, or VORTAC location.
- Other than hard-surfaced runways
- Runways with
- Other than hard-surfaced runways including those closed, are shown for visual identification. Airports may be public or private.

ADDITIONAL AIRPORT INFORMATION

- Private "Pvt" - Non-public use having emergency or landmark value
- Military - Other than hard-surfaced, all military airports are identified by abbreviation ATIS, VFR, and IFR. Do not use for enroute communications control (except ATIS)
- Unimproved
- Abandoned paved runway having landmark value
- Unmanned Flight Path
- 300 ft. or greater

AIRPORT DATA

- FSS - Flight Service Station
- NO SVFR - No Special VFR flight is prohibited. ATIS - 118.3 - Control Tower (CT) - primary frequency
- ASOS/AWS 135.42 - Automated Surface Weather Observing System shown where full-time ATIS not available. Some ASOS/AWS facilities may not be located at airports.
- UNCOM - Aeronautical advisory station
- VFR Advisory - VFR Advisory Service shown where full-time ATIS not available and frequency is other than primary CT frequency.
- UNCOM - Airport of Entry
- ACE - Airport of Entry

AIRPORT DATA (continued)

- Box indicates FAR #
- Special Air Traffic
- Runway with
- Light
- RP # - Special conditions exist - see AFD.
- ACE - Airport of Entry

Services - fuel available and field tented during normal working hours depicted by use of field tenting symbol. Thermal winds shown as *W* with *W* in *W* (in *W* A.M. to *W* P.M. local time). Consult AFD for service availability at airports with hard-surfaced runways greater than 8000 ft. or longer.

Pulsing airport beacon in operation Subject to Sunrise

COMMUNICATION BOXES

- 122.1R 122.8 123.8
- 122.1R 122.8 123.8
- Heavy fine box indicates Flight Service Station (FSS) frequencies 121.3, 241.0 and 241.4 (Canada - 121.3, 198.1 and 241.4) are available at many FSS and are not shown above boxes. All other frequencies are shown. Certain FSS provide Airport Advisory Service, see AFD.
- Frequencies above this box are not used for VFR traffic. Other FSS frequencies are available for use for VFR traffic. Consult Airport/Facility Directory for complete information.

RADIO AIDS TO NAVIGATION

- VHF OMNI RANGE (VOR)
- VORTAC
- VOR-DME
- Other facilities, i.e., FSS Outlet, HCO, etc.
- Non-Directional Radiobeacon (NDB)
- NDB - DME

OBSTRUCTIONS

- 1000 ft. and higher
- below 1000 ft. AGL
- Obstruction
- Group Obstruction
- Obstruction with high-intensity lights, flash frequency and elevation of the top above mean sea level
- Height above ground
- UC - Under construction or erection; position and elevation unverified
- NOTE: Guy wires may extend outward from structures.

MISCELLANEOUS

- Inoperative Line (5000 VALUE)
- Usage
- Flaring Light
- Hang Glider
- Marine Light
- Other Obstructions
- Parachute Landing Area (See Airport/Facility Directory)
- VFRVZ - VFR Flight Restrictions (See Airport/Facility Directory)
- Military Training Routes (MTR) (MPPZ) (See Airport/Facility Directory for route information)

AIRPORT TRAFFIC SERVICE AND AIRSPACE INFORMATION

Class A Airspace

Class B Airspace

Class C Airspace

Class D Airspace

Class E Airspace

Class G Airspace

2400 MSL

Class E Airspace with floor 1200 ft. or greater above surface that abuts Class G Airspace

Class E Airspace with floor 700 ft. above surface

Class E Airspace with floor 1200 ft. or greater above surface that abuts Class G Airspace

4500 MSL

Class E Airspace with floor 1200 ft. AGL, unless otherwise designated as shown above.

Class E Airspace low altitude Federal Airports are indicated by directed towards the runway; Class E Airspace low altitude Federal Airports are indicated by directed towards the runway; Class E Airspace low altitude Federal Airports are indicated by directed towards the runway.

GRANT

Prohibited, Restricted, and Warning Areas: Canadian Advisory, Change, and Restricted Areas

Military Operation Area

Special Airport Traffic Area (See FAR 91 for details)

Air Defense Identification Zone

Class E Airspace (See FAR 91.215(a))

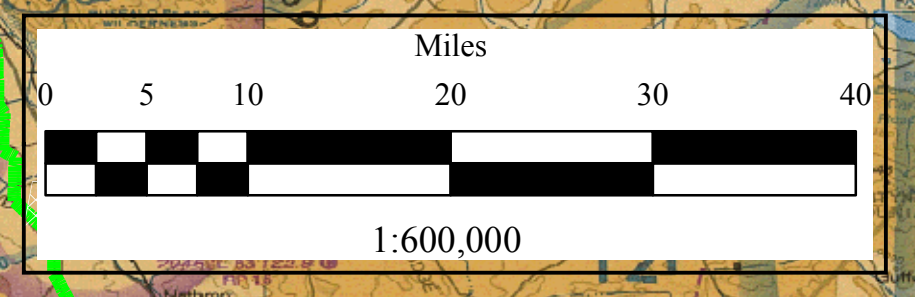
National Security Area

Terminal Radar Service Area (TRSA)

MTR - Military Training Route

TOPOGRAPHIC INFORMATION

- Roads & Road Markers
- Power Transmission Line
- Aerial Cable
- Landmark Feature - stadium, factory, school, golf course, etc.
- Outdoor Theater
- Lighthouse Tower
- 618 Elevation Base of Tower
- Coast Guard Station
- Risk Track
- Tank, water, oil or gas
- Oil Well
- Water Well
- Mine or Quarry
- Mountain Peak
- 1182 Elevation of Peak (Peak symbol does not indicate a recommended route or direction of flight and use caution; does not indicate a recommended clearance altitude. Hazardous fault conditions may exist within and near mountain passes.)
- Ditch
- Low Potential
- Slopes and Valleys



CONTOUR INTERVAL 500 feet
Intermediate contour 250 feet

HIGHEST TERRAIN elevation is 14433 feet
located at 39° 07' N - 106° 27' W

Spot elevation: *x* 454
Approximate elevation: *.....* *x* 300
Doubtful locations are indicated by omission of the point locator (dot or "x")

ENTIRE AREA OF THIS CHART IS WITHIN THE MOUNTAIN STANDARD TIME ZONE +7 (+MST) - UTC

MILITARY TRAINING ROUTES (MTR)

All IR and VFR MTRs are shown, and may extend from the surface upwards. Only the route centerline, direction of flight along the route and the route designator are depicted - route width and altitude are not shown. Since these routes are subject to change every 90 days, and the charts are renewed every 6 months, you are cautioned and advised to contact the nearest FSS for route dimensions and current status for those routes affecting your flight. Routes with a change in the alignment of the charted route centerline will be indicated in the Aeronautical Chart Bulletin of the Airport/Facility Directory. (DND users refer to Area Planning #P18 Military Training Route North and South America for current routes.)