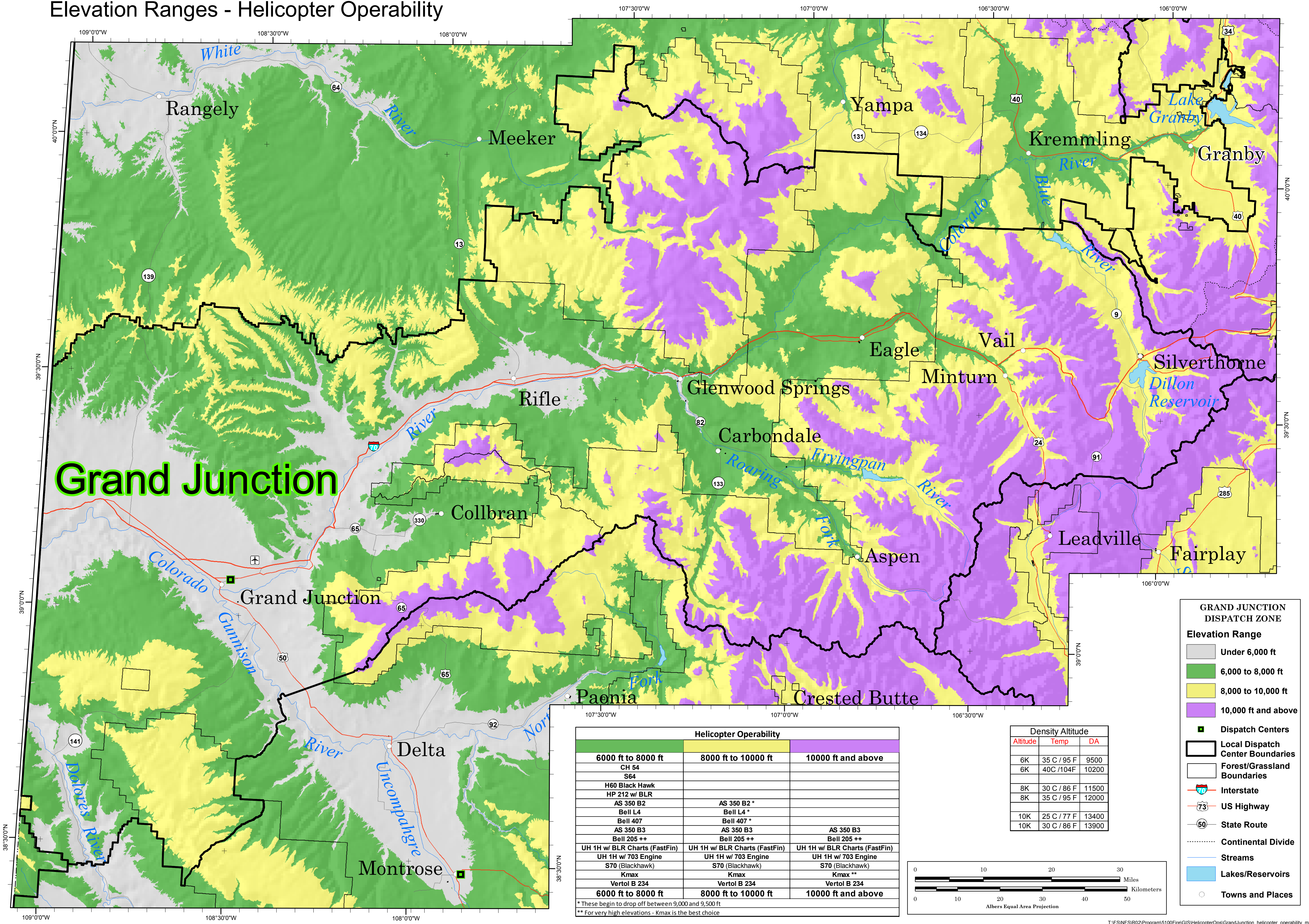


# Grand Junction Dispatch Zone Elevation Ranges - Helicopter Operability

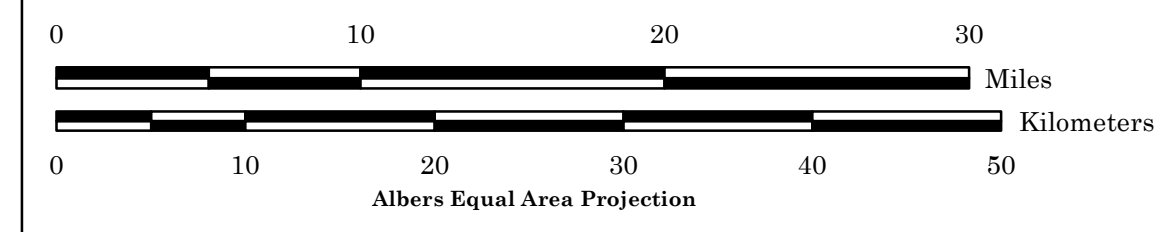


**Grand Junction**

Helicopter Operability		
6000 ft to 8000 ft	8000 ft to 10000 ft	10000 ft and above
CH 54		
S64		
H60 Black Hawk		
HP 212 w/ BLR		
AS 350 B2	AS 350 B2 *	
Bell L4	Bell L4 *	
Bell 407	Bell 407 *	
AS 350 B3	AS 350 B3	AS 350 B3
Bell 205 ++	Bell 205 ++	Bell 205 ++
UH 1H w/ BLR Charts (FastFin)	UH 1H w/ BLR Charts (FastFin)	UH 1H w/ BLR Charts (FastFin)
UH 1H w/ 703 Engine	UH 1H w/ 703 Engine	UH 1H w/ 703 Engine
S70 (Blackhawk)	S70 (Blackhawk)	S70 (Blackhawk)
Kmax	Kmax	Kmax **
Vertol B 234	Vertol B 234	Vertol B 234
6000 ft to 8000 ft	8000 ft to 10000 ft	10000 ft and above

Density Altitude		
Altitude	Temp	DA
6K	35 C / 95 F	9500
6K	40C /104F	10200
8K	30 C / 86 F	11500
8K	35 C / 95 F	12000
10K	25 C / 77 F	13400
10K	30 C / 86 F	13900

\* These begin to drop off between 9,000 and 9,500 ft  
\*\* For very high elevations - Kmax is the best choice



**GRAND JUNCTION DISPATCH ZONE**

**Elevation Range**

- Under 6,000 ft
- 6,000 to 8,000 ft
- 8,000 to 10,000 ft
- 10,000 ft and above

**Dispatch Centers**

**Local Dispatch Center Boundaries**

**Forest/Grassland Boundaries**

**Interstate**

**US Highway**

**State Route**

**Continental Divide**

**Streams**

**Lakes/Reservoirs**

**Towns and Places**