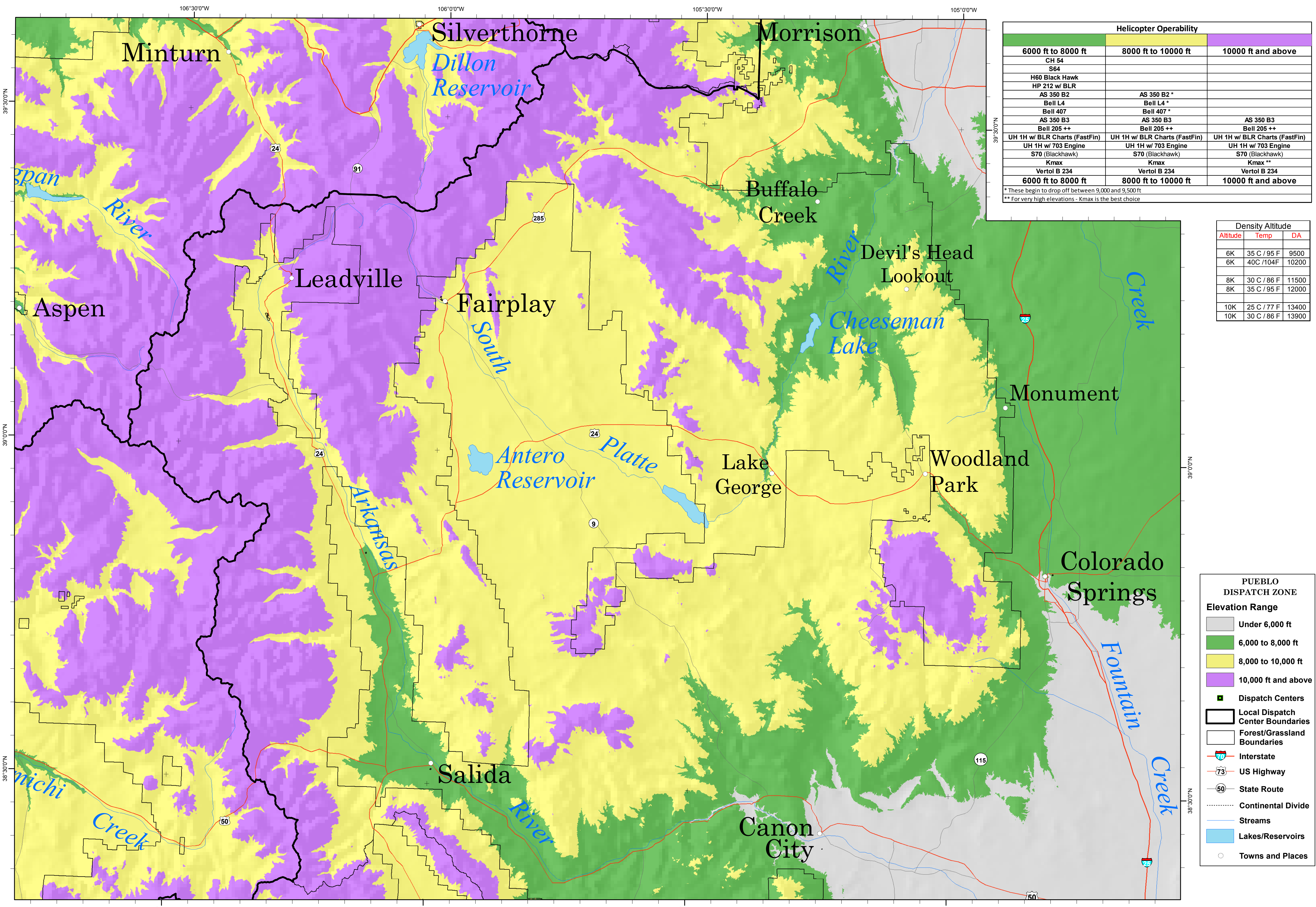


Pueblo Dispatch Zone - Pike NF and San Isabel NF North Elevation Ranges - Helicopter Operability



Helicopter Operability		
6000 ft to 8000 ft	8000 ft to 10000 ft	10000 ft and above
CH 54		
S64		
H60 Black Hawk		
HP 212 w/ BLR		
AS 350 B2	AS 350 B2 *	
Bell L4	Bell L4 *	
Bell 407	Bell 407 *	
AS 350 B3	AS 350 B3	AS 350 B3
Bell 205 ++	Bell 205 ++	Bell 205 ++
UH 1H w/ BLR Charts (FastFin)	UH 1H w/ BLR Charts (FastFin)	UH 1H w/ BLR Charts (FastFin)
UH 1H w/ 703 Engine	UH 1H w/ 703 Engine	UH 1H w/ 703 Engine
S70 (Blackhawk)	S70 (Blackhawk)	S70 (Blackhawk)
Kmax	Kmax	Kmax **
Vertol B 234	Vertol B 234	Vertol B 234
6000 ft to 8000 ft	8000 ft to 10000 ft	10000 ft and above

* These begin to drop off between 9,000 and 9,500 ft
** For very high elevations - Kmax is the best choice

Density Altitude		
Altitude	Temp	DA
6K	35 C / 95 F	9500
6K	40C /104F	10200
8K	30 C / 86 F	11500
8K	35 C / 95 F	12000
10K	25 C / 77 F	13400
10K	30 C / 86 F	13900

PUEBLO DISPATCH ZONE

Elevation Range

- Under 6,000 ft
- 6,000 to 8,000 ft
- 8,000 to 10,000 ft
- 10,000 ft and above

Dispatch Centers

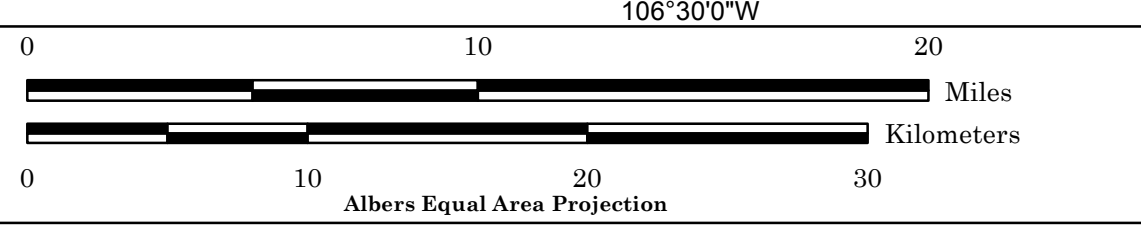
- Local Dispatch Center Boundaries
- Forest/Grassland Boundaries

Roads

- Interstate
- US Highway
- State Route

Other Features

- Continental Divide
- Streams
- Lakes/Reservoirs
- Towns and Places



T:\FS\FSR02\Program5100\Fire\GIS\HelicopterOps\Pueblo_Pike_SanIsN_helicopter_operability_map
e.bowne 8/11/2014