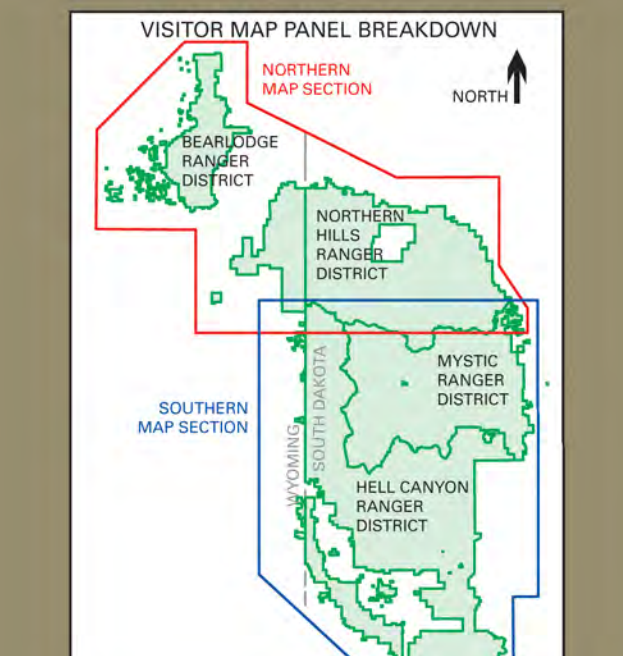


South Dakota Wyoming Forest Service United States Department of Agriculture



Black Hills National Forest Offices

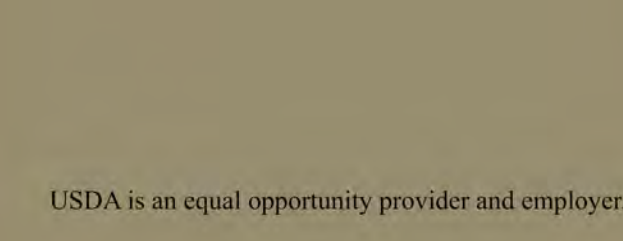
- List of regional offices including Forest Supervisor's Office, Ranger Districts (Bear Lodge, Northern Hills, Mystic, Hill Canyon, Packer, Packer-Victor, Packer-Deer Creek, Packer-Deer Creek), and State Parks.

State Parks

- List of state parks including Wyoming Field Office, Agate Recreation Area, Bear Butte State Park, and Custer State Park.

Tourism Information

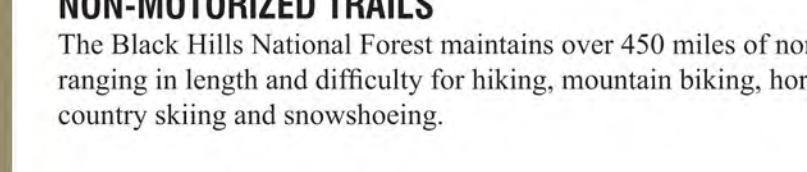
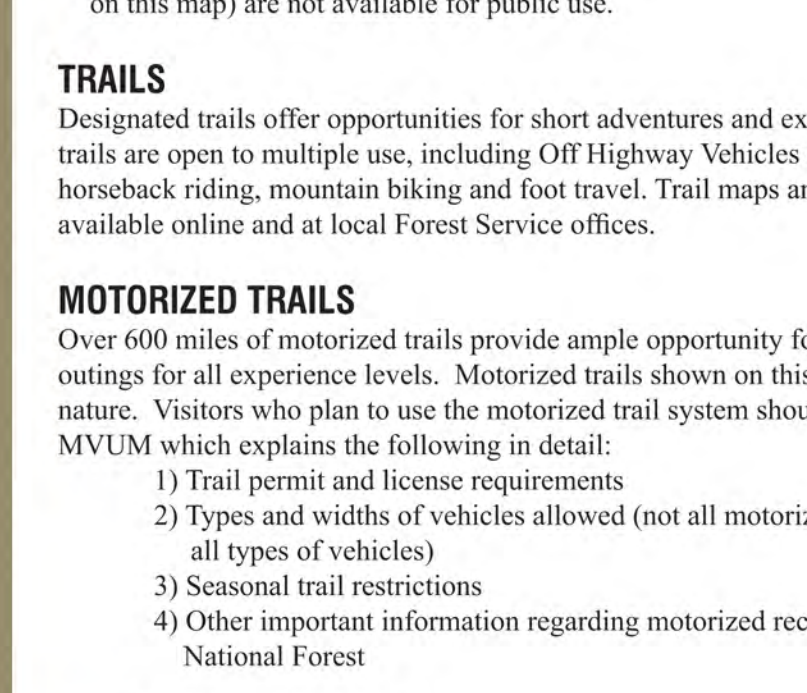
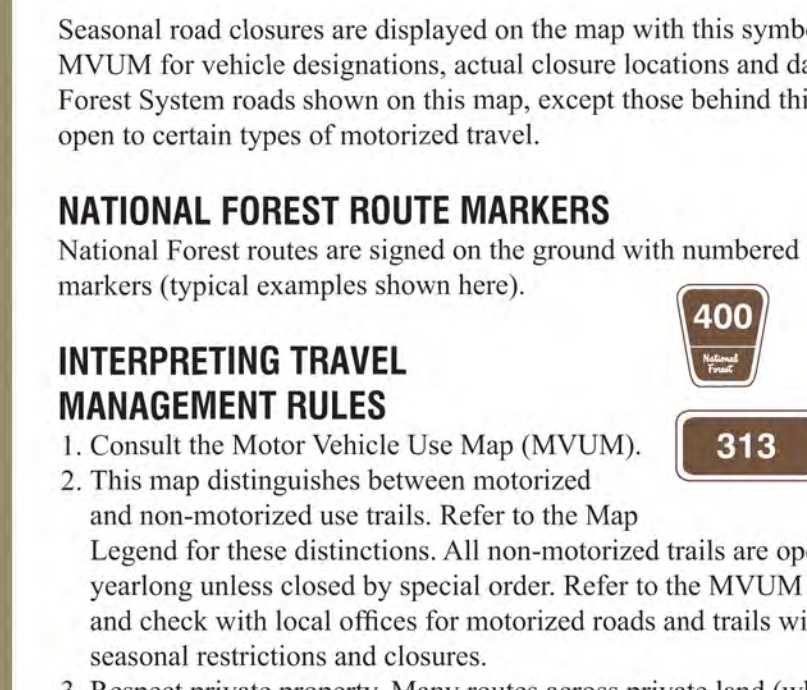
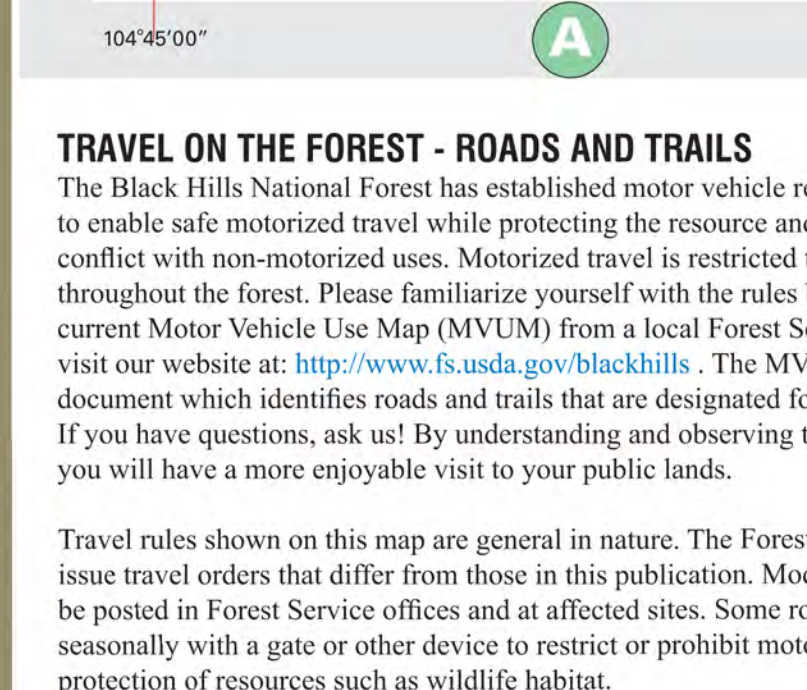
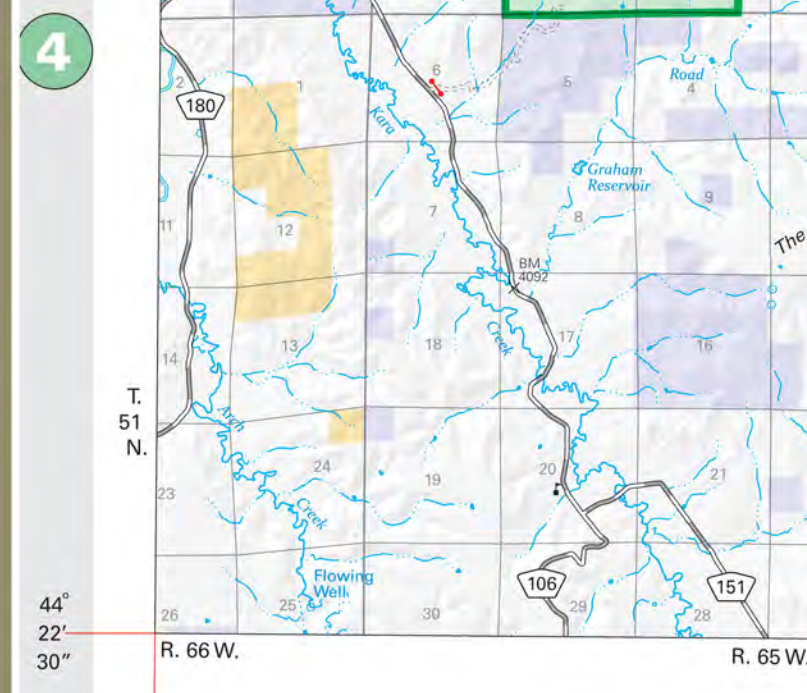
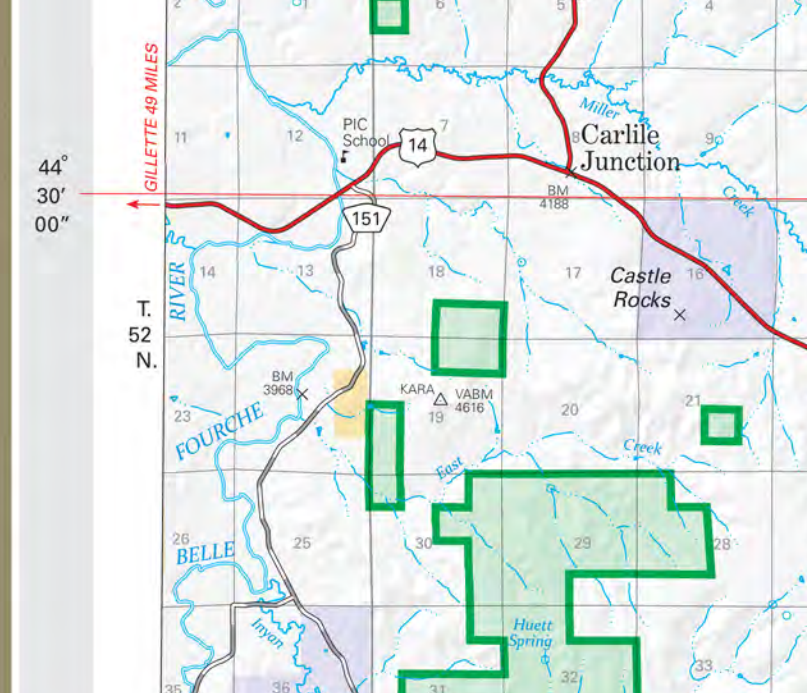
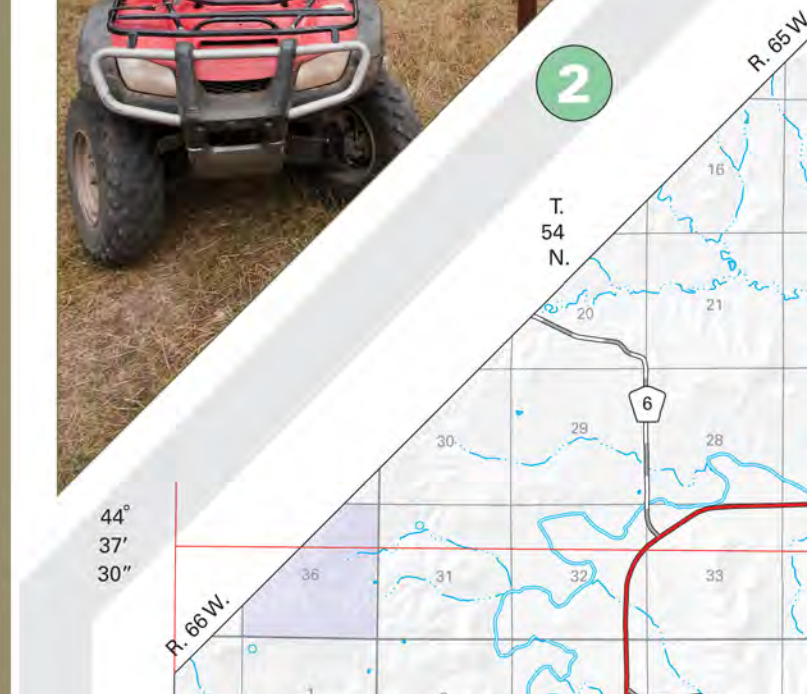
- Interpretive Partner information for Black Hills Parks & Forest Association, Wyoming Department of Tourism, and Wyoming State Parks and Trails Department.



USDA is an equal opportunity provider and employer.

WELCOME TO THE BLACK HILLS NATIONAL FOREST. For many people, from early Native Americans to today's visitors, the Black Hills has been a special place for physical and spiritual renewal.

EXPLORE AND ENJOY. Amid the splendid scenery of the "Island in the Plains," year-round recreation opportunities abound!



LAND AND RESOURCE MANAGEMENT. President Grover Cleveland established the Black Hills Forest Reserve in 1897 to protect the Hills from wildfires and timber theft.

TRAVEL ON THE FOREST - ROADS AND TRAILS. The Black Hills National Forest has established motor vehicle regulations in order to enable safe motorized travel while protecting the resource and minimizing conflict with non-motorized users.

WINTER TRAILS. The Black Hills is a winter wonderland, with some areas receiving 180 inches of snow annually.

SCENIC BYWAYS. Named for South Dakota's former governor and US Senator, the Peter Norbeck Scenic Byway offers 66 miles of outstanding views.

NATIONAL FOREST ROUTE MARKERS. National Forest routes are marked on the ground with numbered route markers (typical examples shown here).

INTERPRETING TRAIL MANAGEMENT RULES. This map distinguishes between motorized and non-motorized use trails. Refer to the Map Legend for these distinctions.

TRAILS. Designated trails offer opportunities for short adventures and extended trips. Many trails are open to multiple use, including Off Highway Vehicles (OHV), motorcycle, horseback riding, mountain biking and foot travel.

MOTORIZED TRAILS. Over 600 miles of motorized trails provide ample opportunity for short or extended outings for all experience levels.

NON-MOTORIZED TRAILS. The Black Hills National Forest maintains over 450 miles of non-motorized trails ranging in length and difficulty for hiking, mountain biking, horseback riding, cross-country skiing and snowshoeing.

Table with 5 columns: Name of Site, Map Location, Picnic Sites, Elevation, Facilities. Lists sites like BREEZY POINT, SANDY POINT GROUP, WACKLEBEE, IRON MOUNTAIN, etc.

Table with 5 columns: Name of Site, Map Location, Picnic Sites, Elevation, Facilities. Lists sites like MOUNT ROOSEVELT, FACTOLA POINT, CROW PEAK, etc.

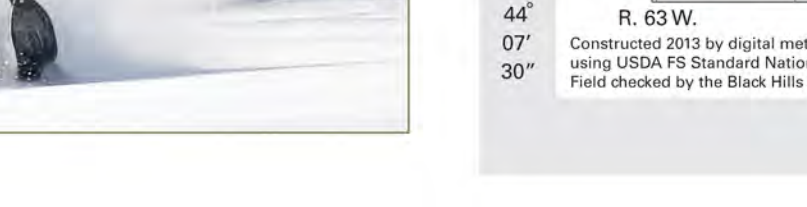
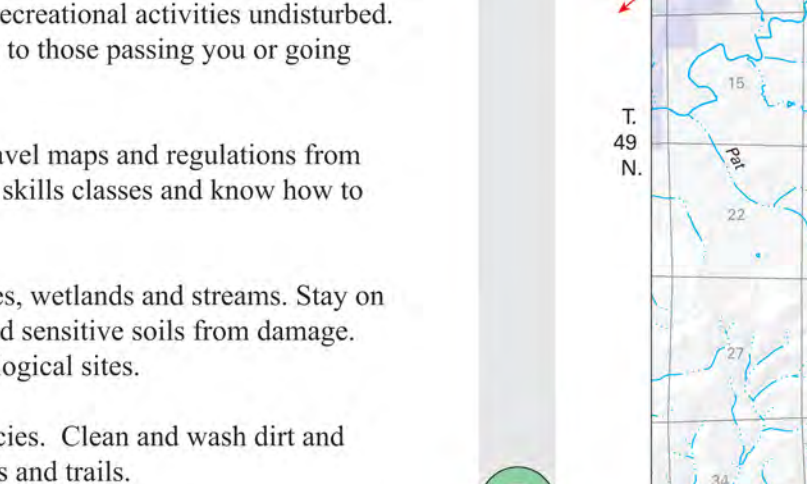
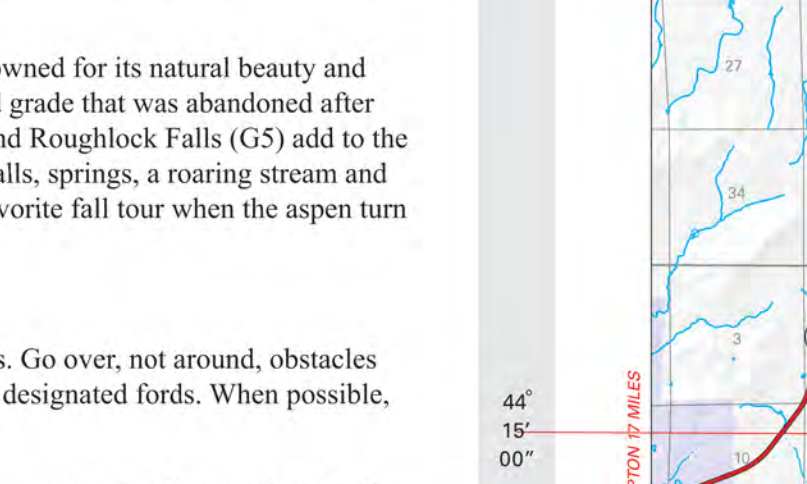
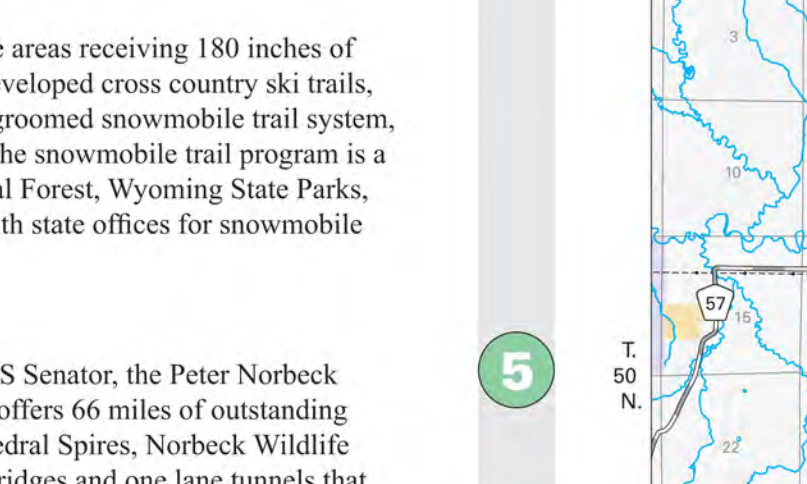
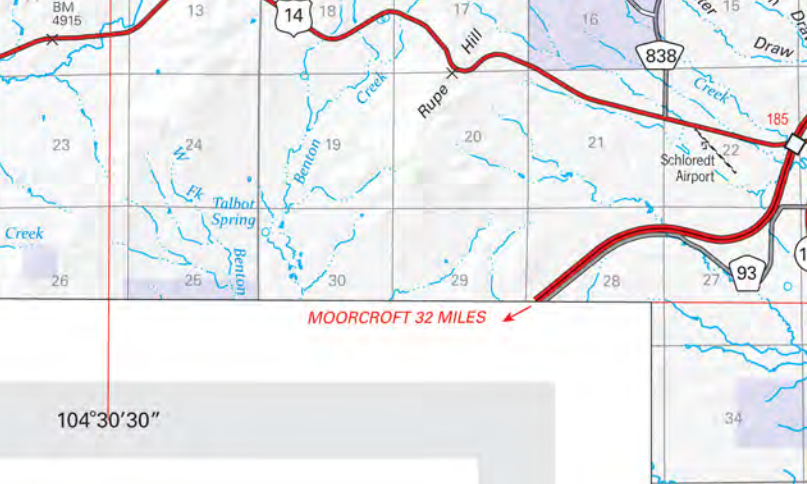
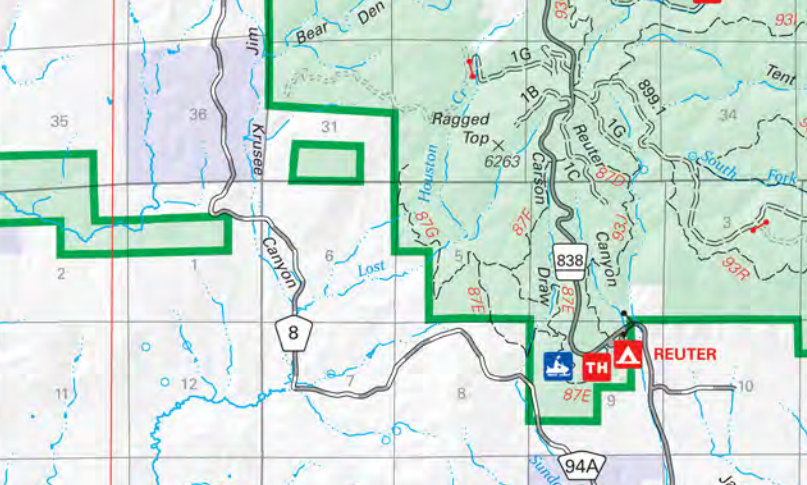
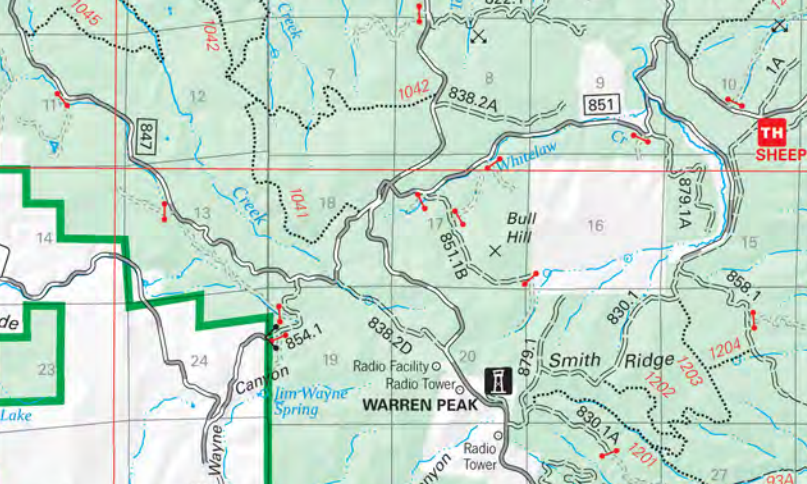
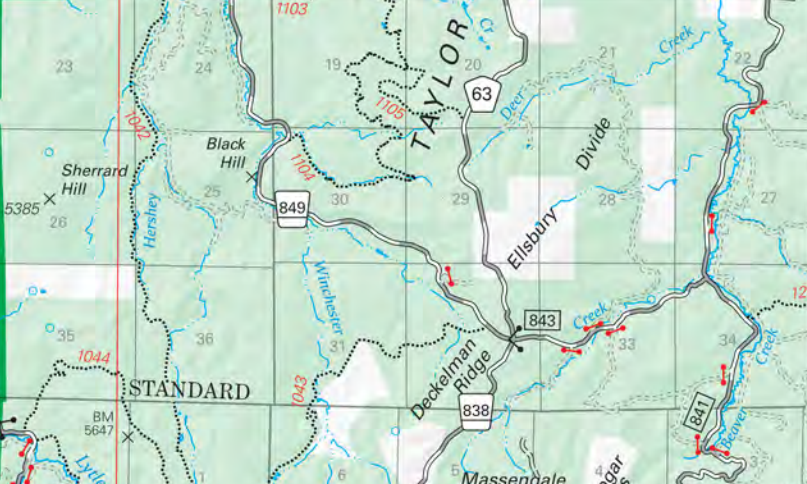
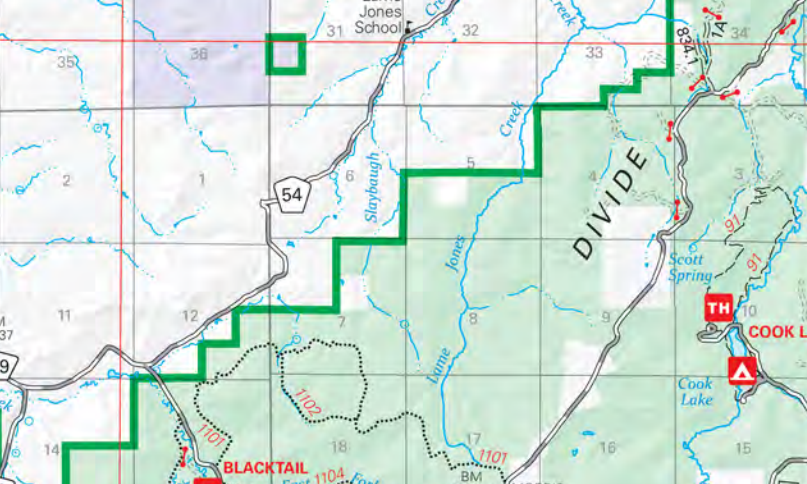
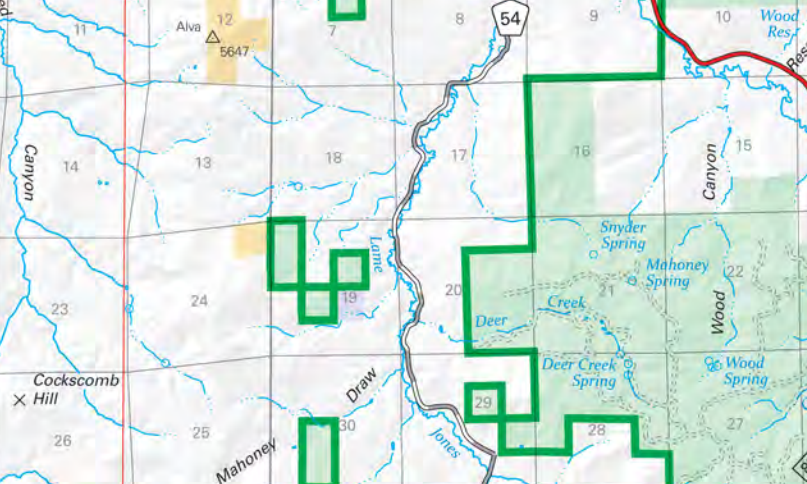


Table with 5 columns: Name of Site, Map Location, Picnic Sites, Elevation, Facilities. Lists sites like BUSH HILL, BIG PINE, BLACKLAC, BLUEBIRD, etc.

Table with 5 columns: Name of Site, Map Location, Picnic Sites, Elevation, Facilities. Lists sites like DAKOTA, HELL CANYON, HELL TOP, etc.

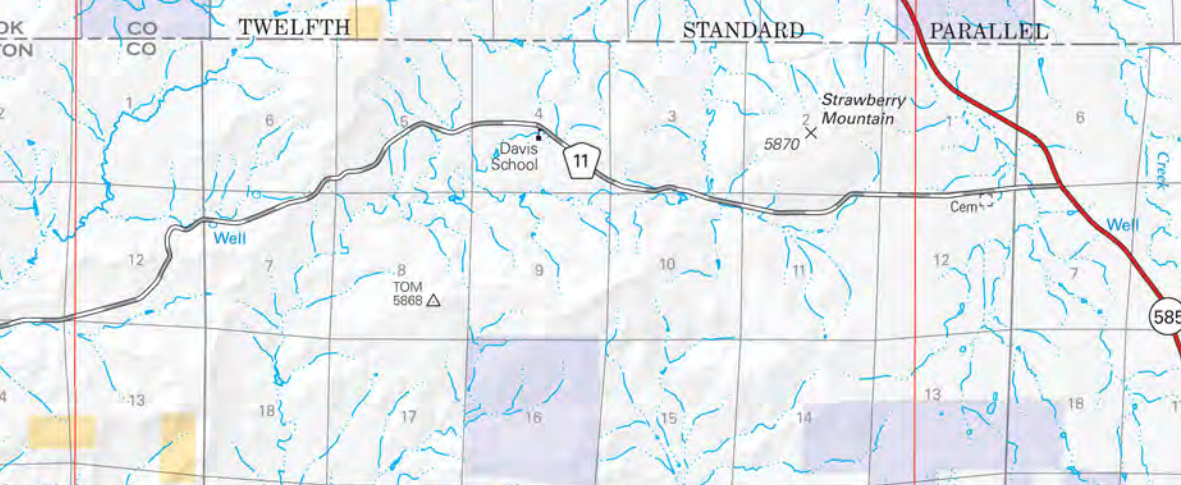
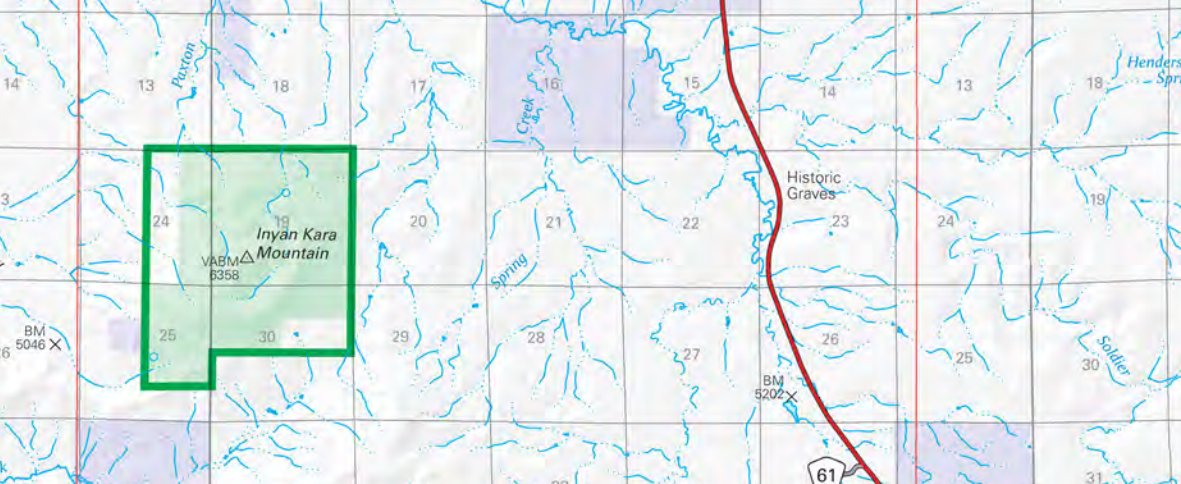
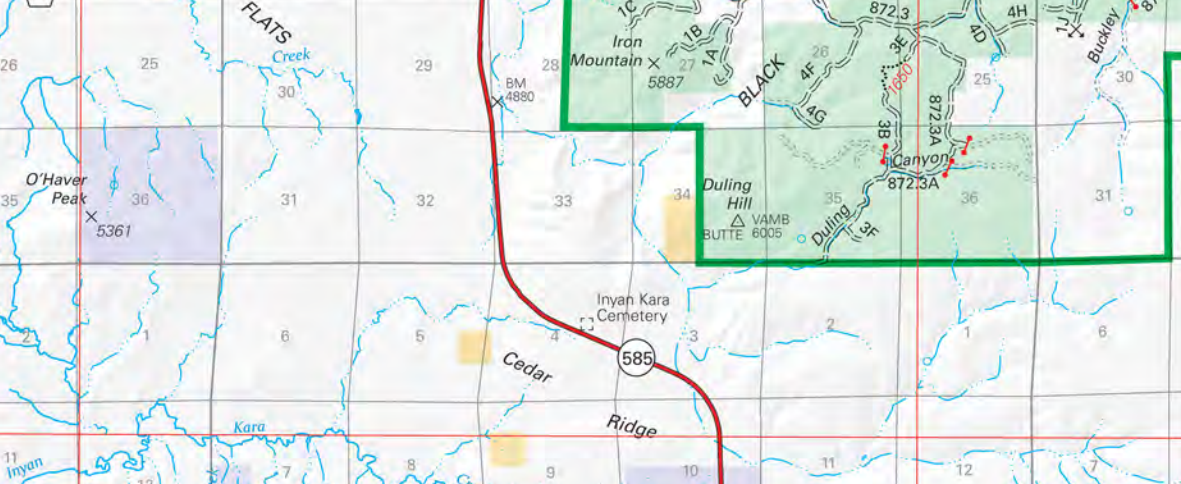
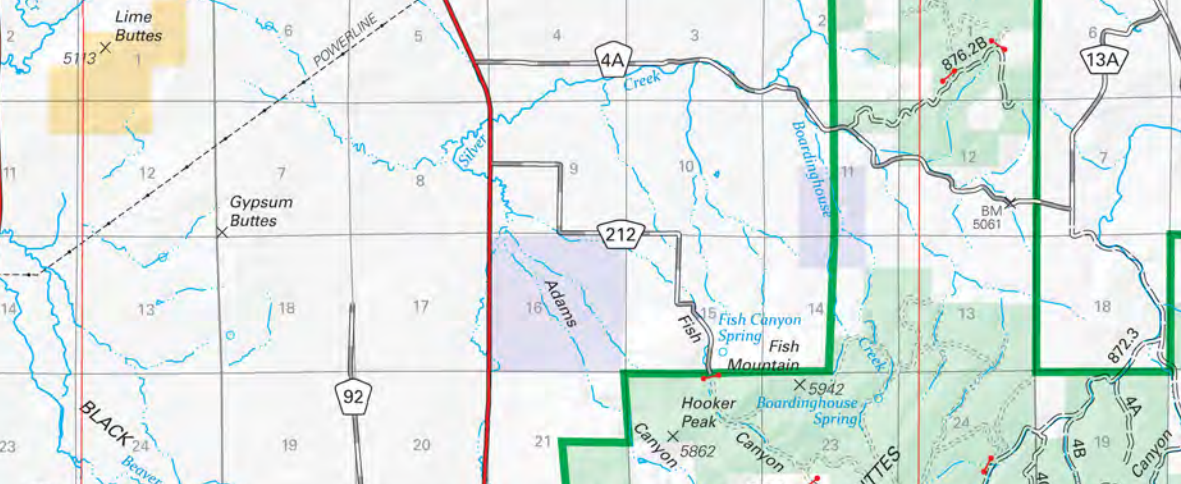
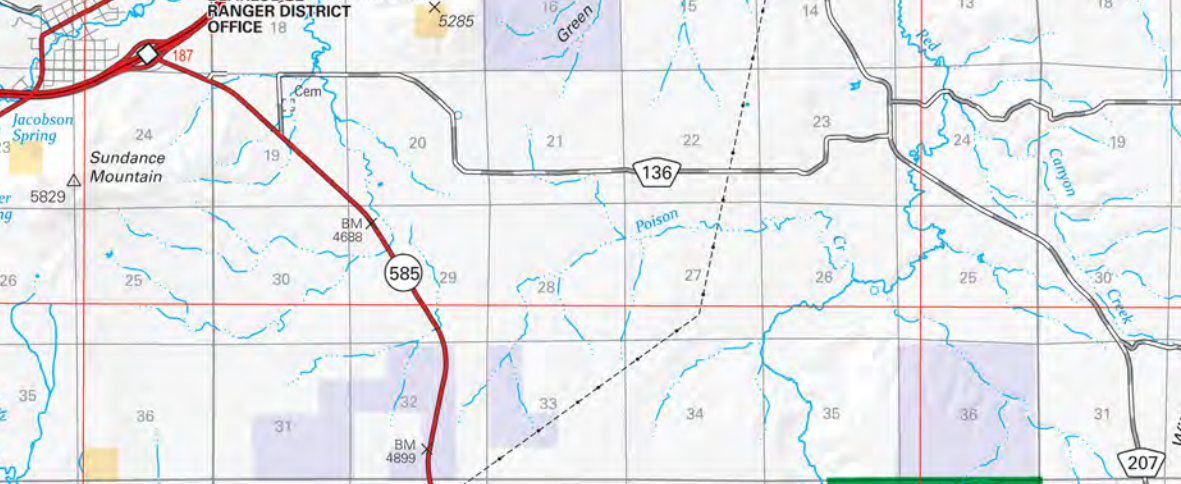
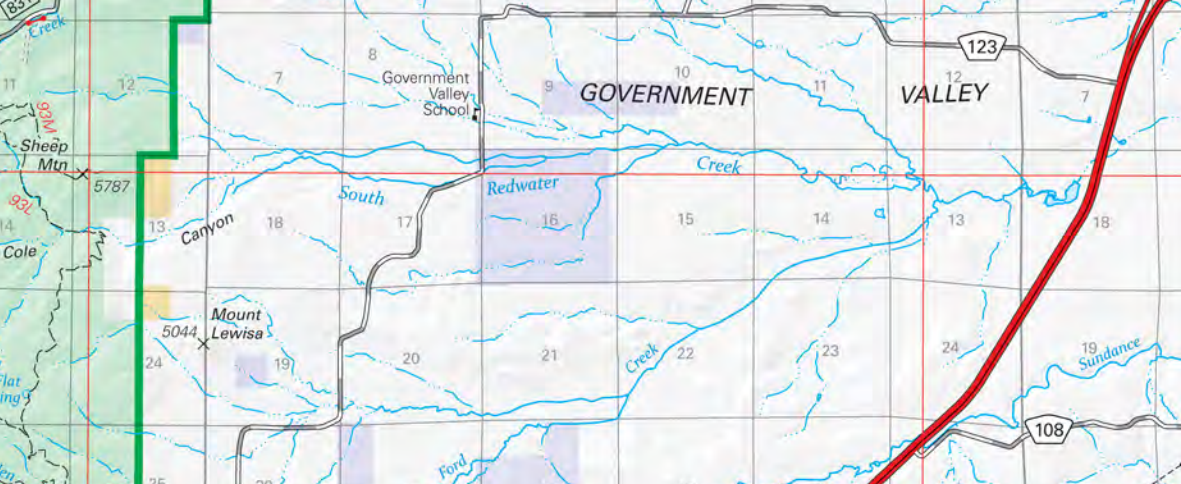
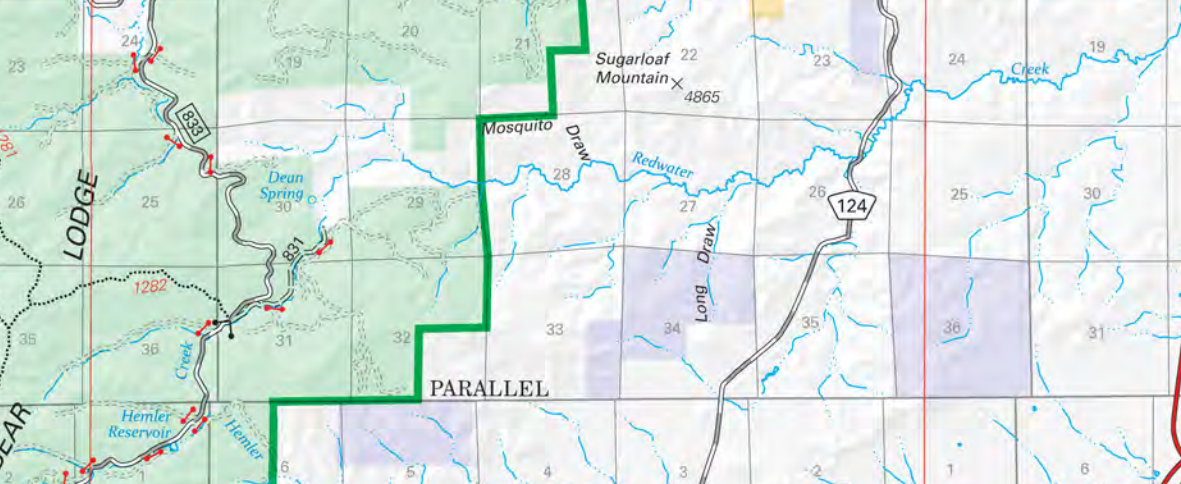
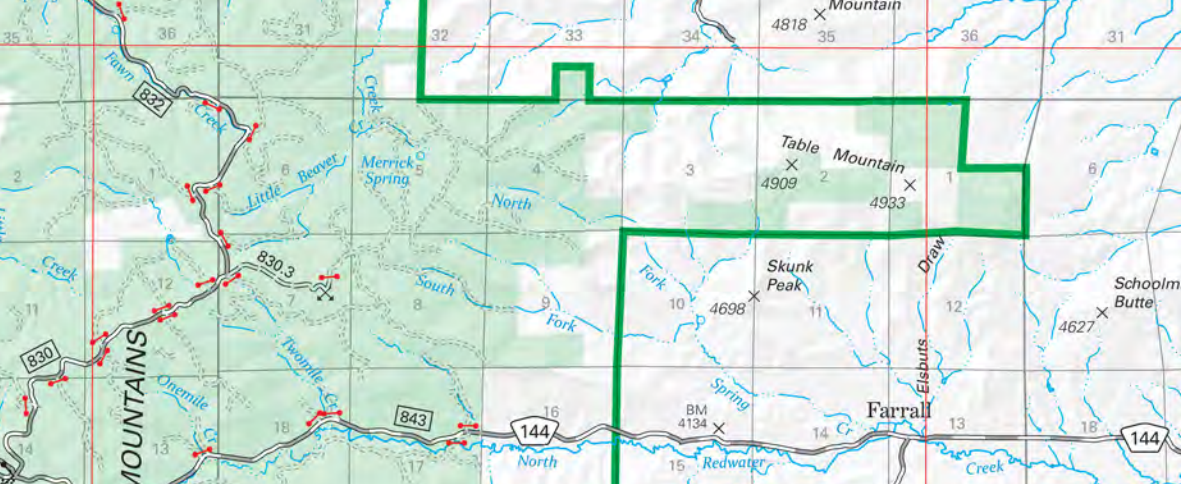
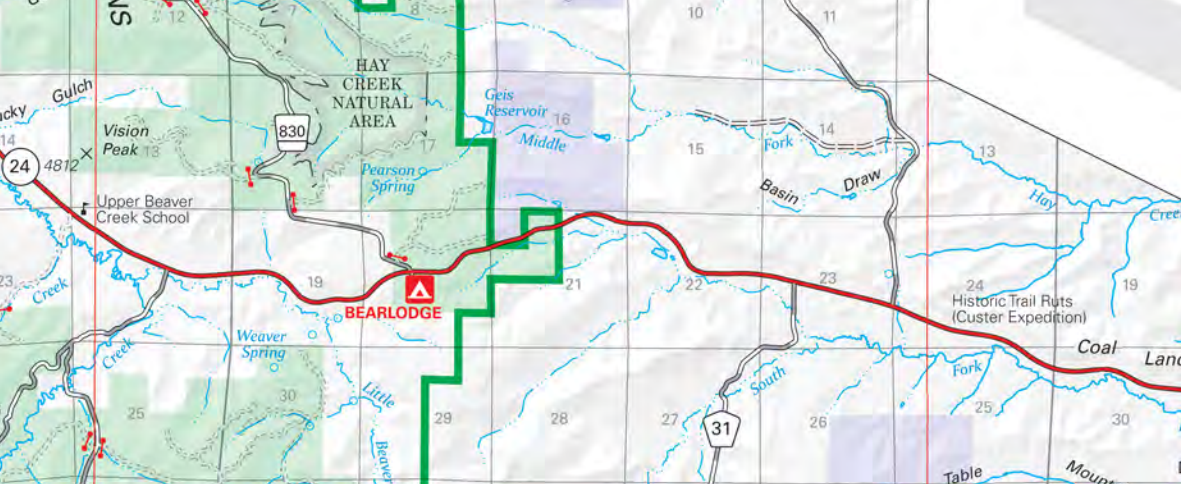


Table with 5 columns: Name of Site, Map Location, Picnic Sites, Elevation, Facilities. Lists sites like DAKOTA, HELL CANYON, HELL TOP, etc.

Table with 5 columns: Name of Site, Map Location, Picnic Sites, Elevation, Facilities. Lists sites like DAKOTA, HELL CANYON, HELL TOP, etc.

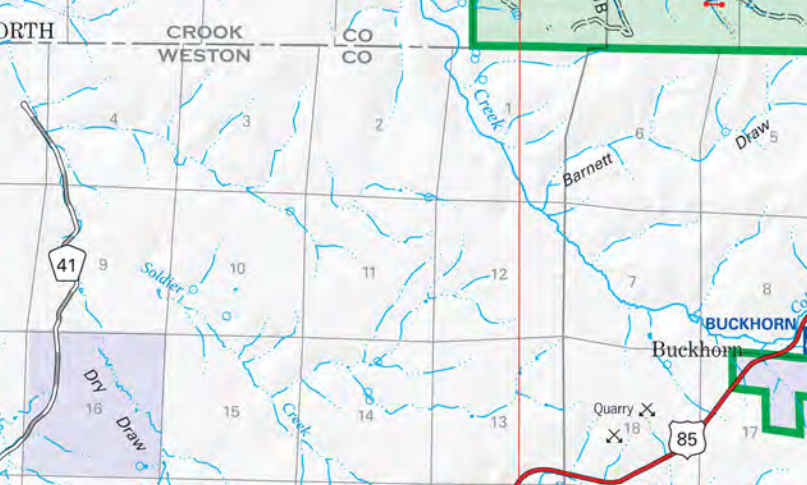
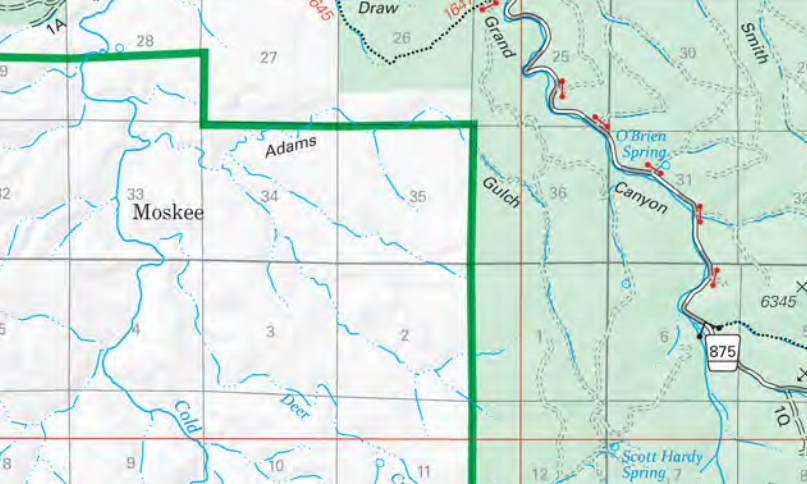
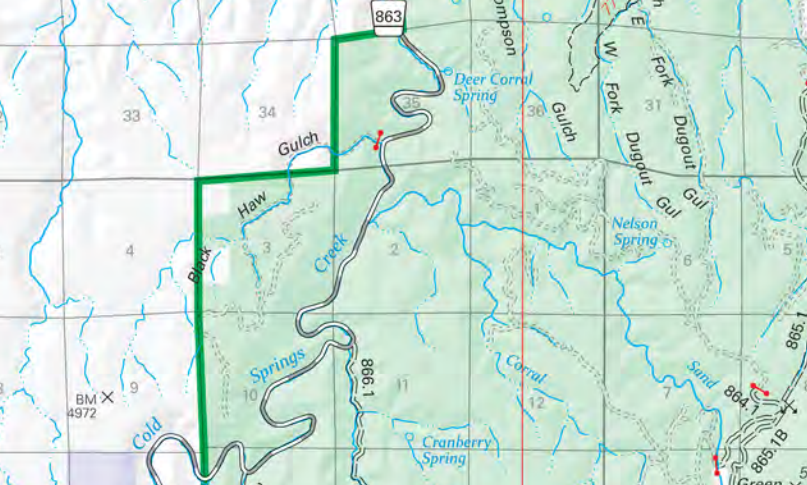
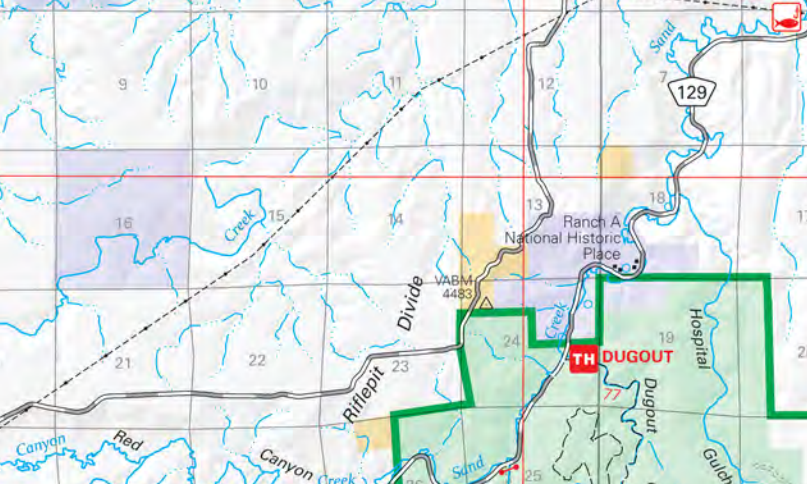
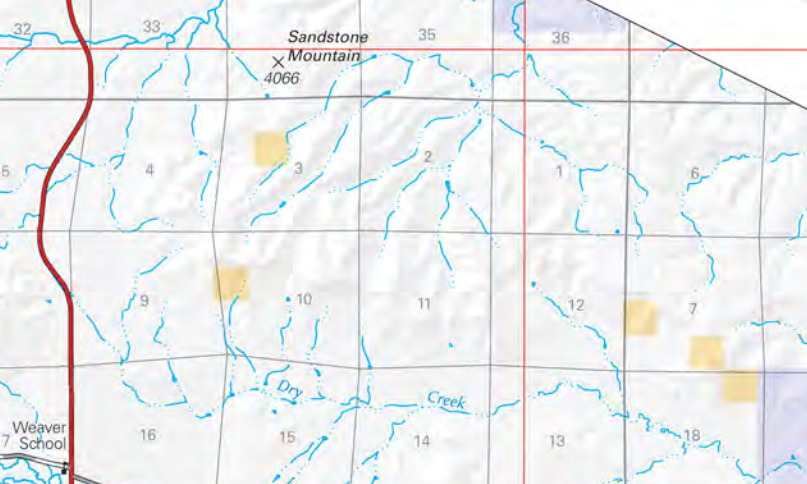


Table with 5 columns: Name of Site, Map Location, Picnic Sites, Elevation, Facilities. Lists sites like DAKOTA, HELL CANYON, HELL TOP, etc.

Table with 5 columns: Name of Site, Map Location, Picnic Sites, Elevation, Facilities. Lists sites like DAKOTA, HELL CANYON, HELL TOP, etc.

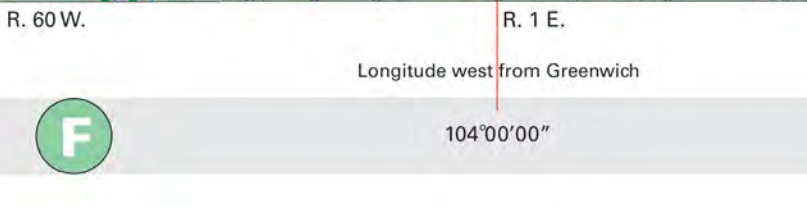
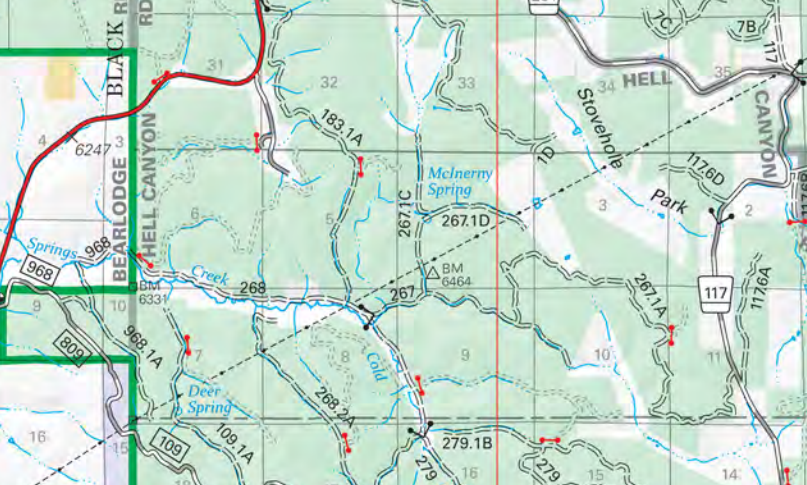
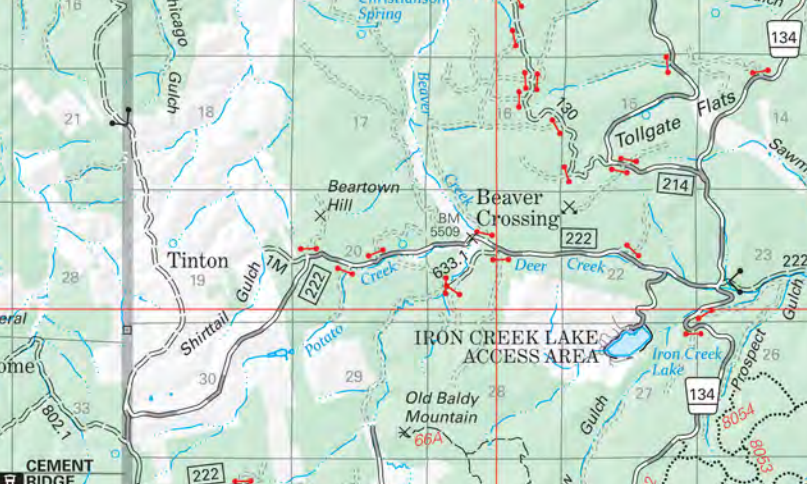
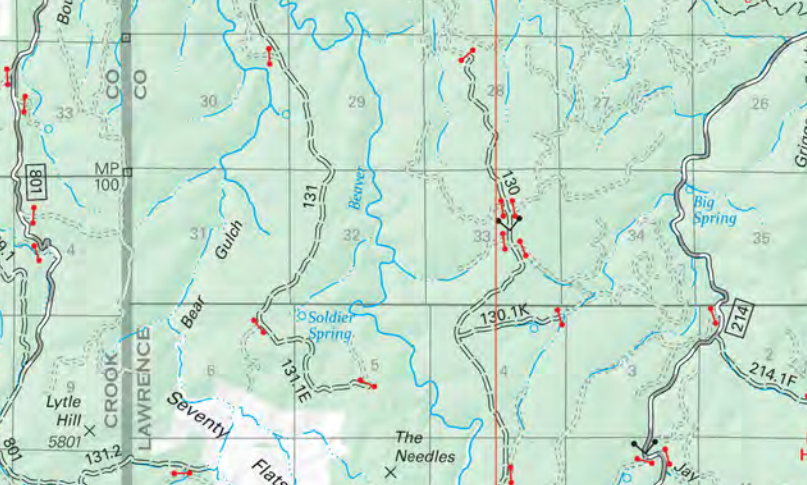
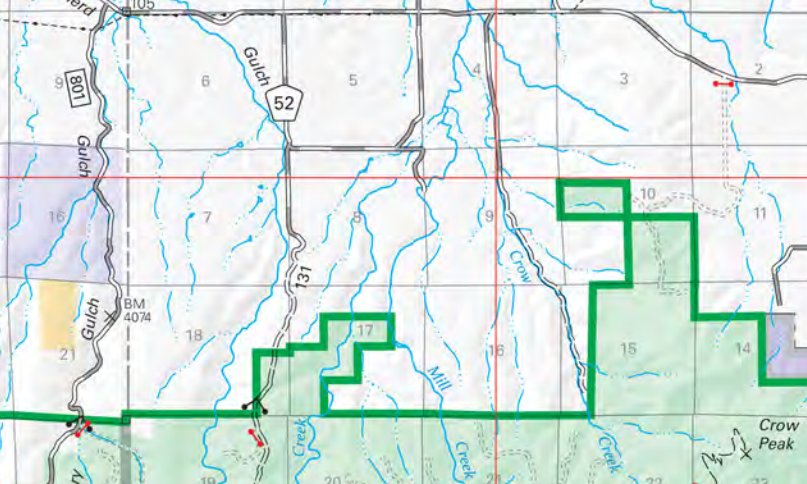


Table with 5 columns: Name of Site, Map Location, Picnic Sites, Elevation, Facilities. Lists sites like DAKOTA, HELL CANYON, HELL TOP, etc.

Table with 5 columns: Name of Site, Map Location, Picnic Sites, Elevation, Facilities. Lists sites like DAKOTA, HELL CANYON, HELL TOP, etc.

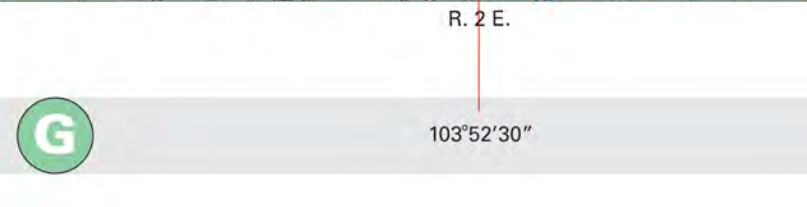
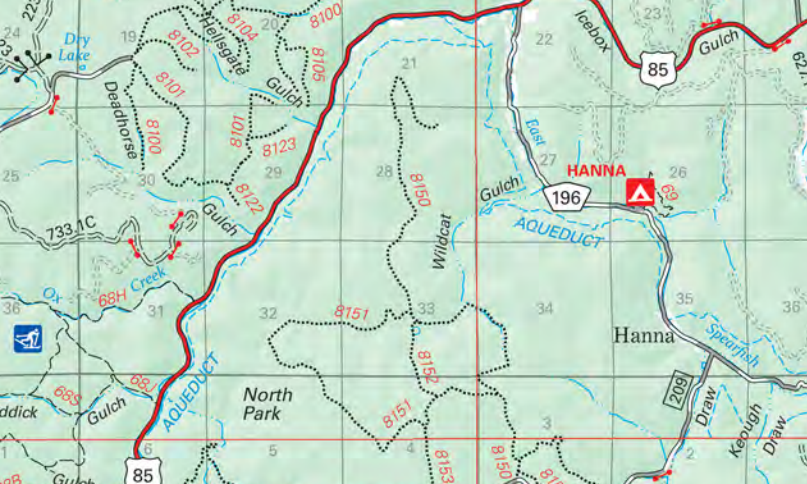
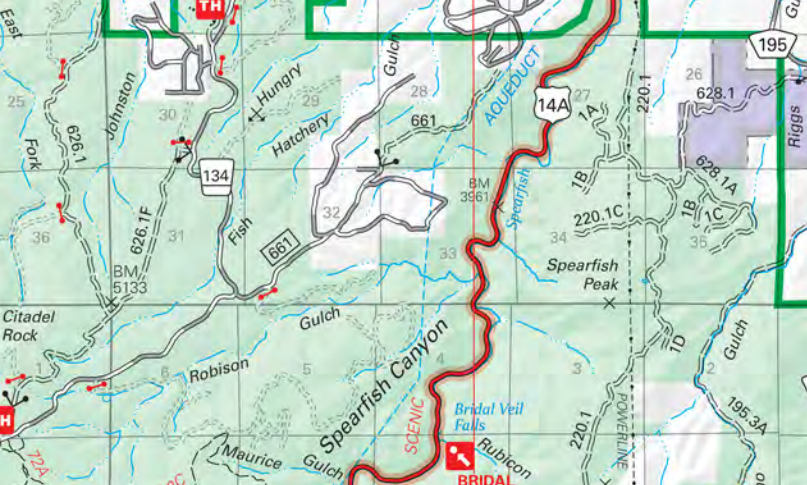
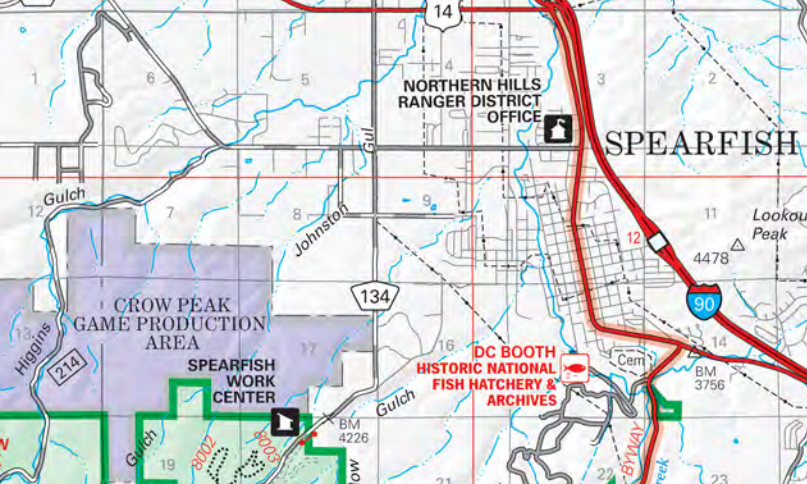
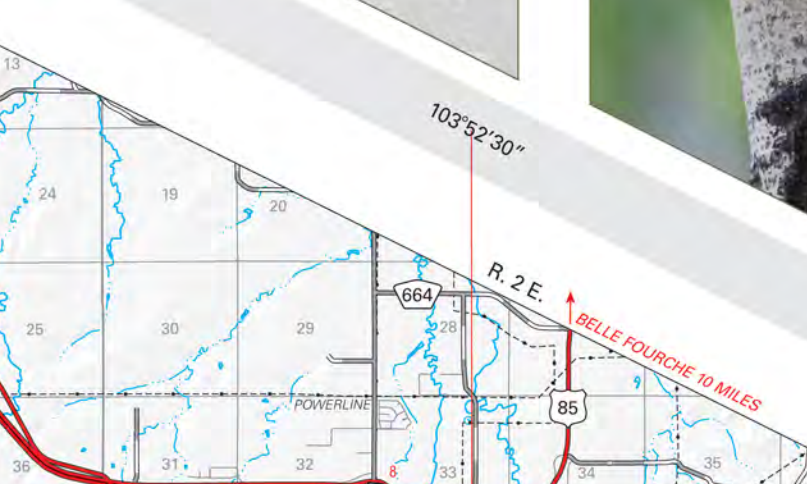
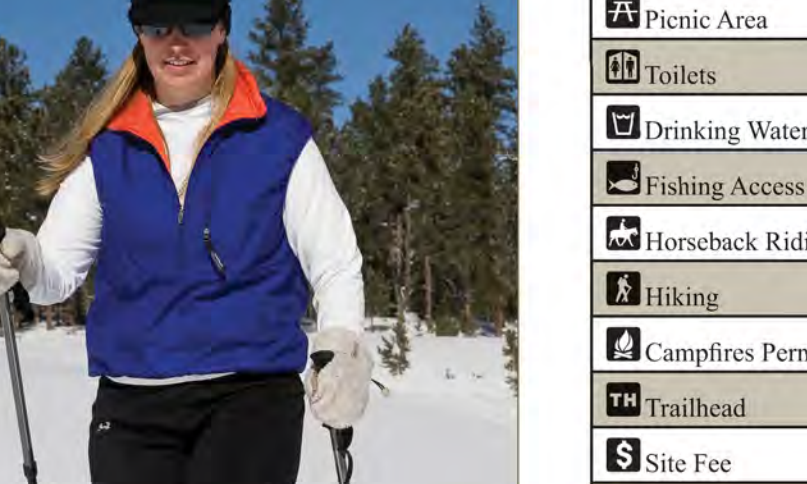


Table with 5 columns: Name of Site, Map Location, Picnic Sites, Elevation, Facilities. Lists sites like DAKOTA, HELL CANYON, HELL TOP, etc.

Table with 5 columns: Name of Site, Map Location, Picnic Sites, Elevation, Facilities. Lists sites like DAKOTA, HELL CANYON, HELL TOP, etc.

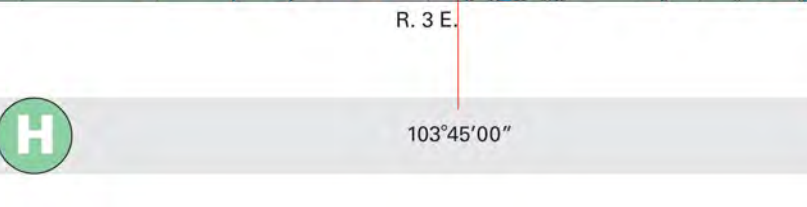
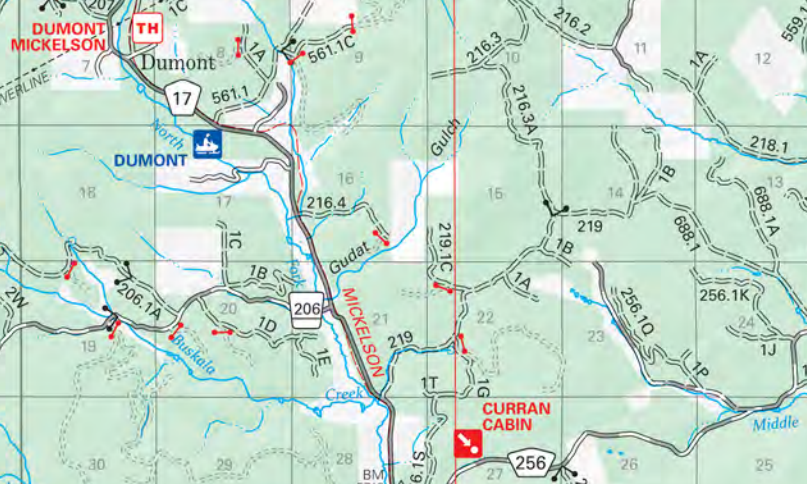
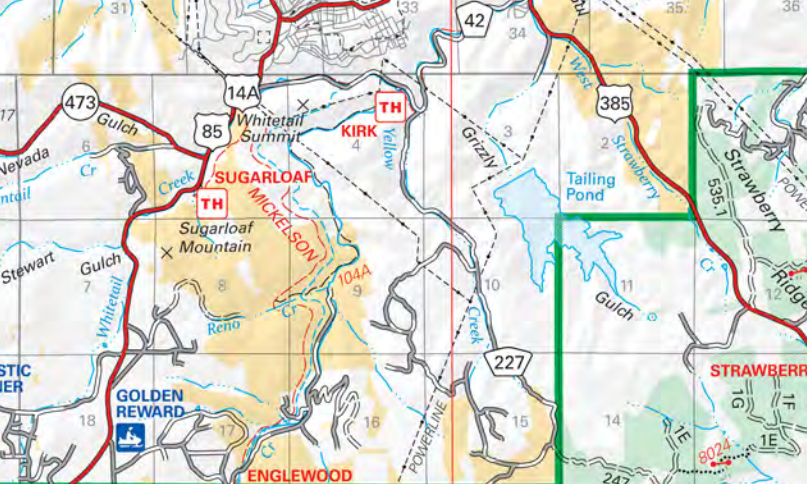
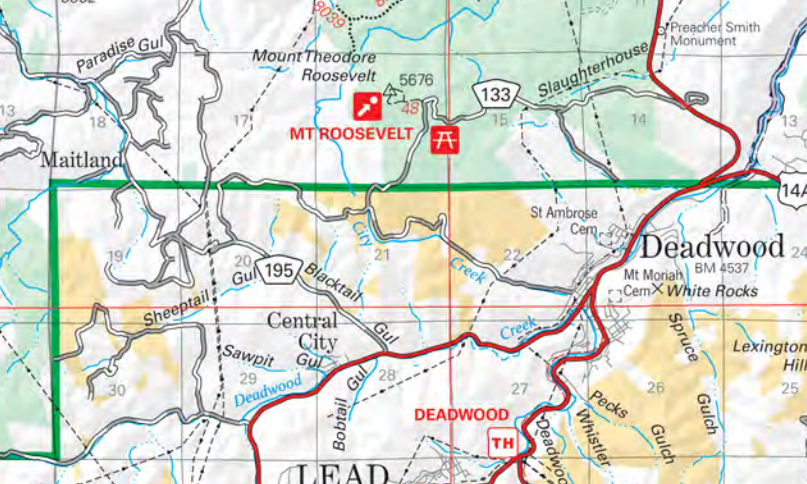
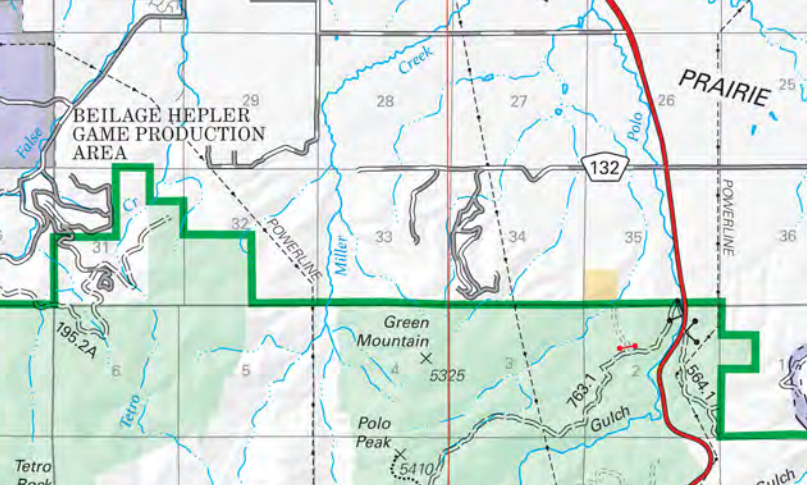
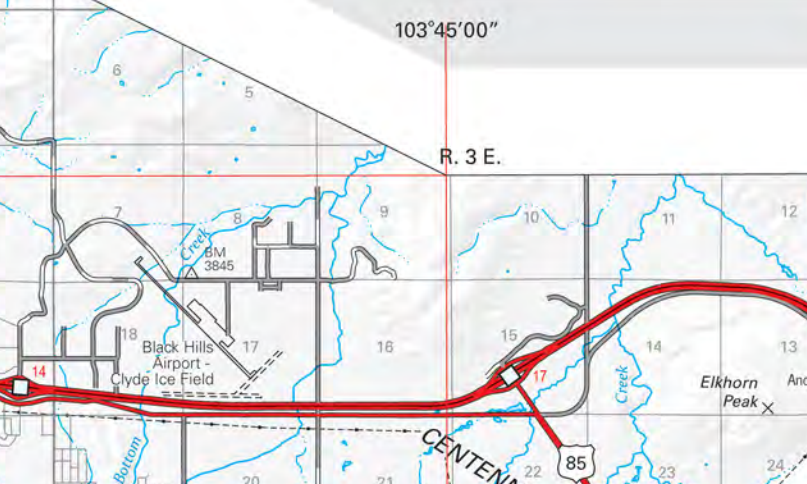
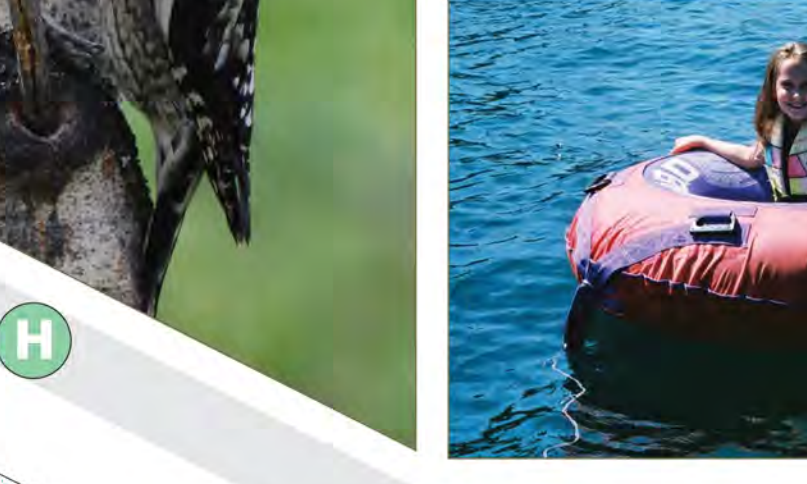
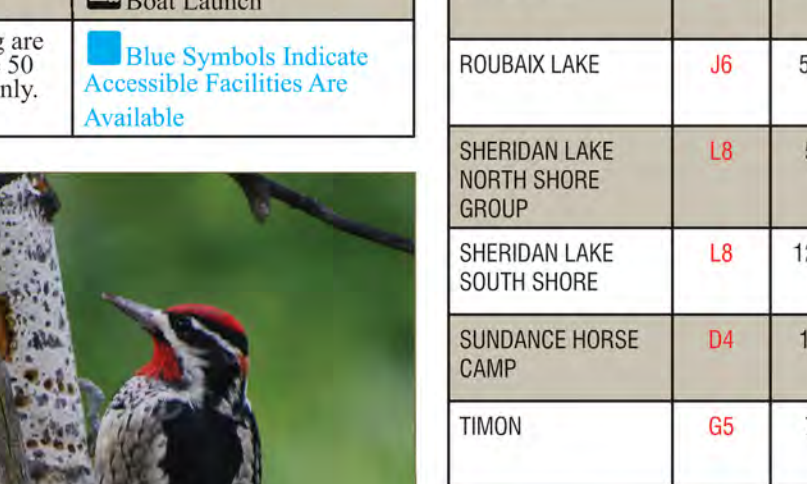


Table with 5 columns: Name of Site, Map Location, Picnic Sites, Elevation, Facilities. Lists sites like DAKOTA, HELL CANYON, HELL TOP, etc.

Table with 5 columns: Name of Site, Map Location, Picnic Sites, Elevation, Facilities. Lists sites like DAKOTA, HELL CANYON, HELL TOP, etc.

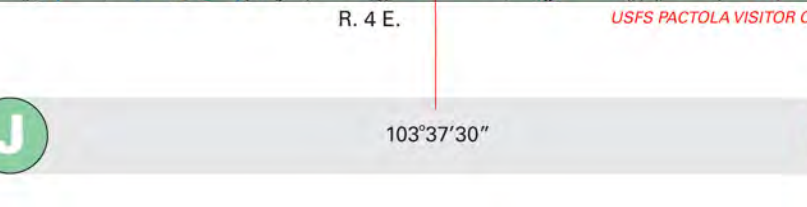
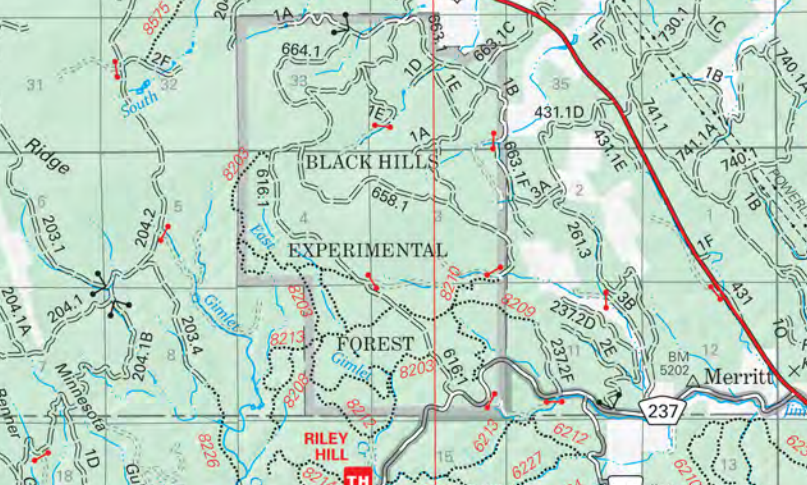
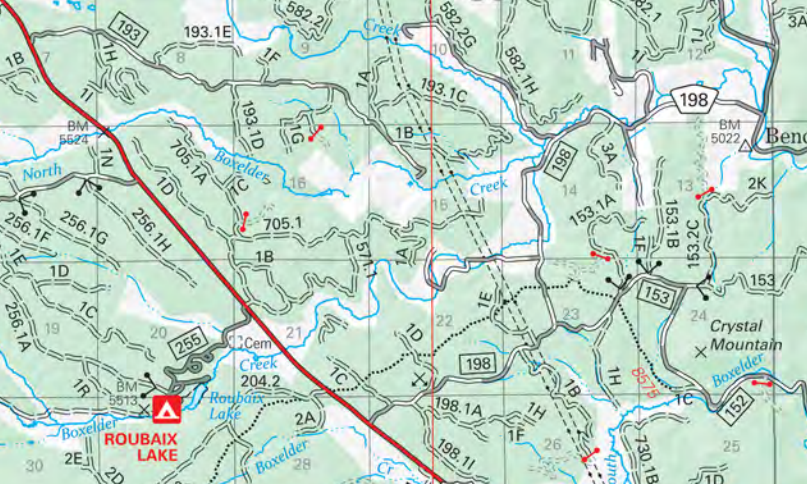
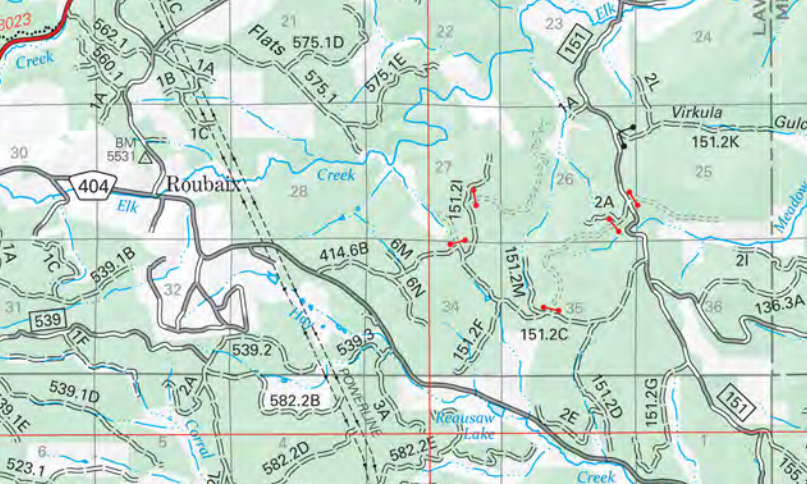
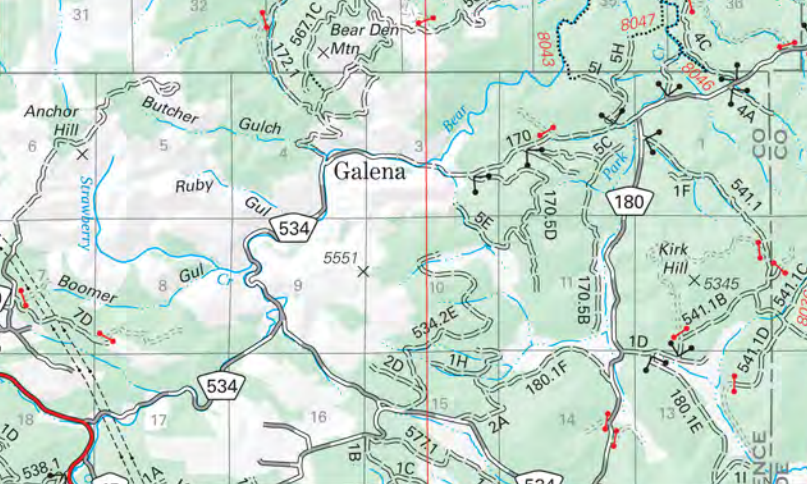
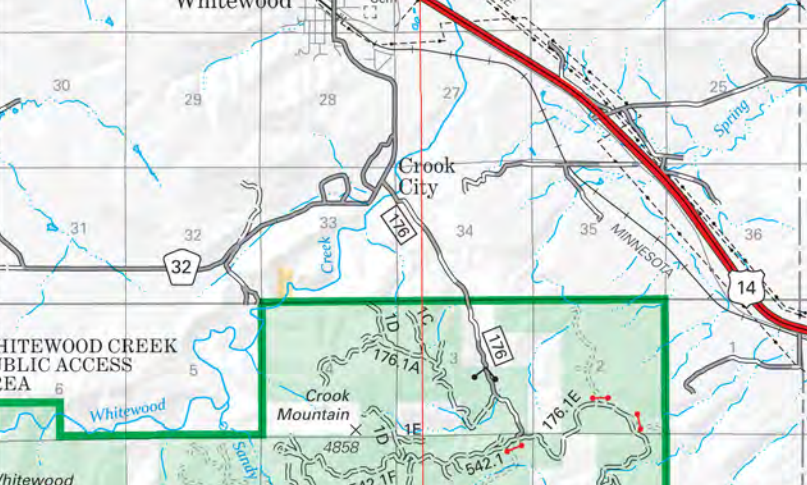
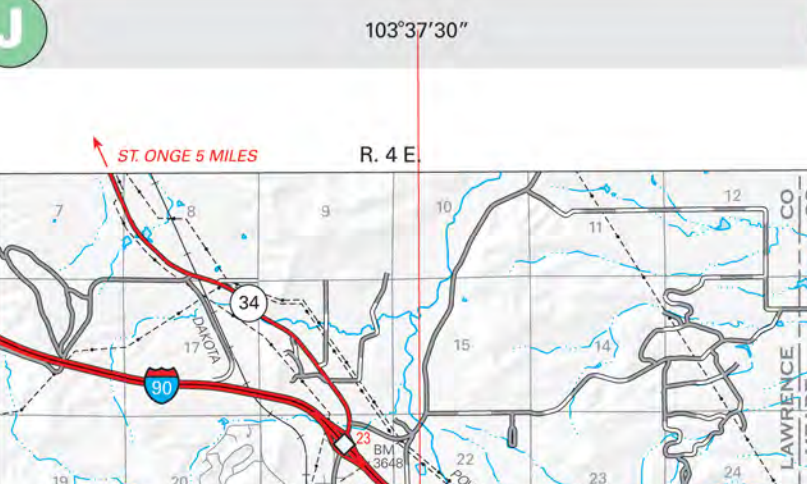
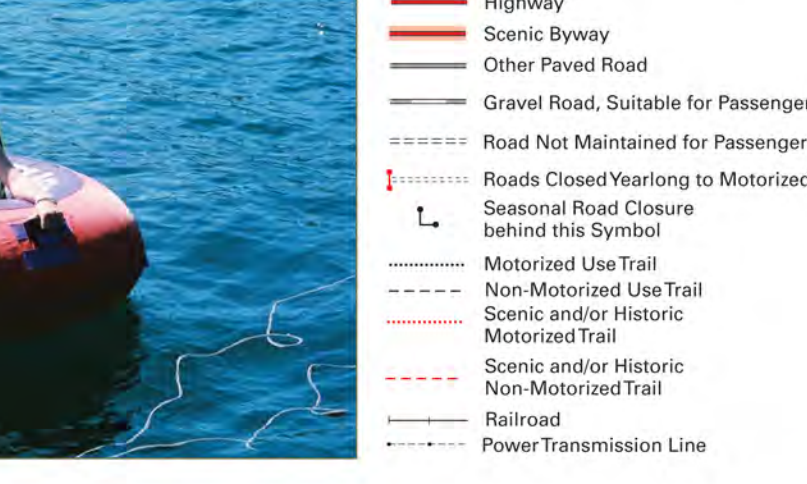
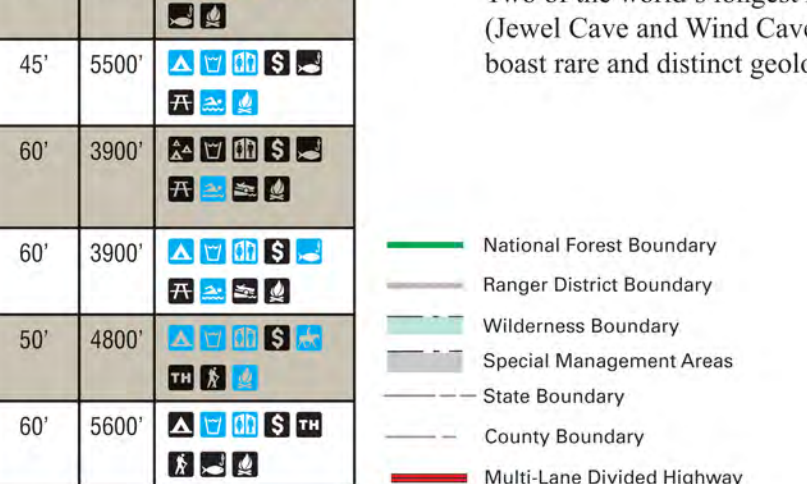
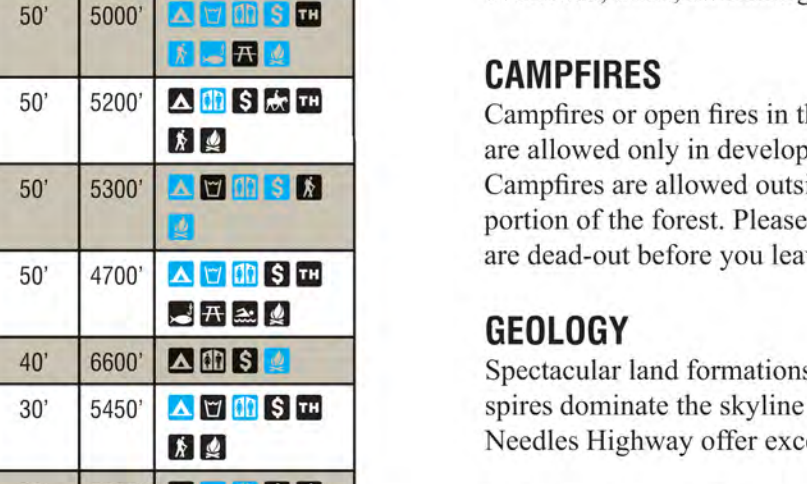


Table with 5 columns: Name of Site, Map Location, Picnic Sites, Elevation, Facilities. Lists sites like DAKOTA, HELL CANYON, HELL TOP, etc.

Table with 5 columns: Name of Site, Map Location, Picnic Sites, Elevation, Facilities. Lists sites like DAKOTA, HELL CANYON, HELL TOP, etc.

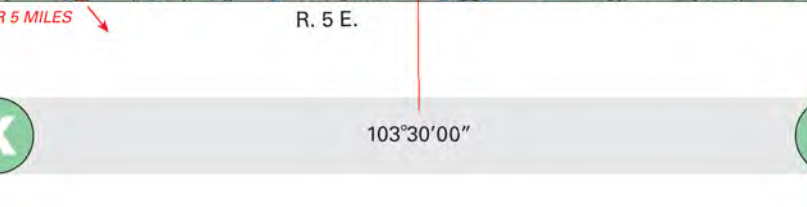
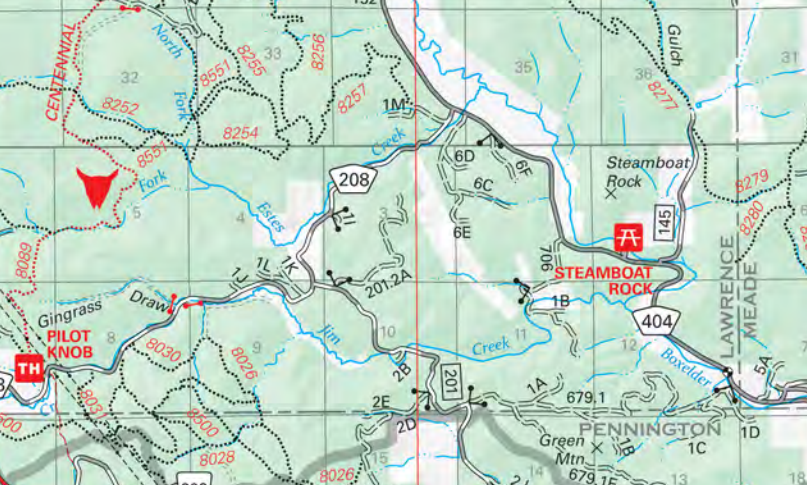
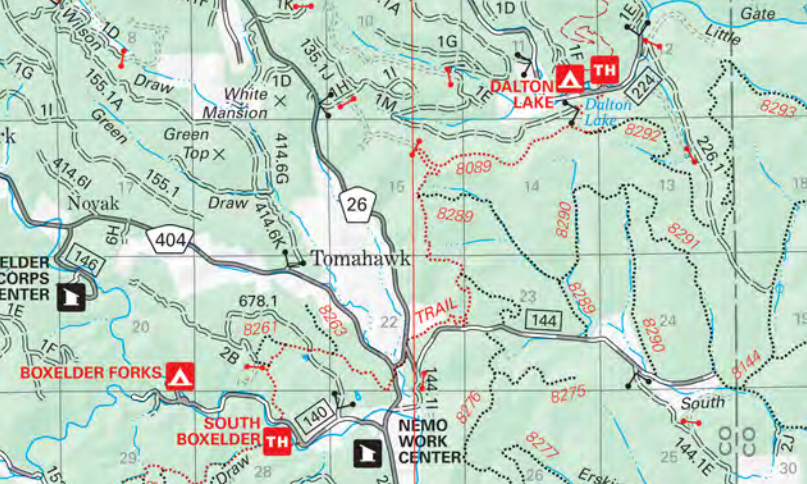
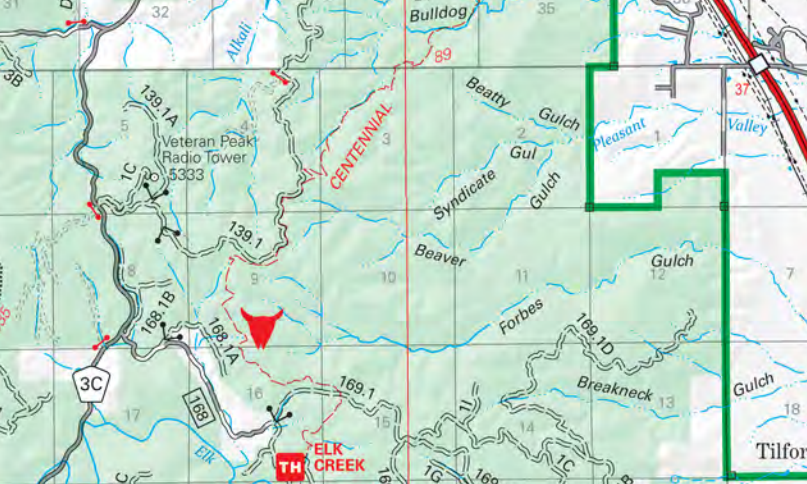
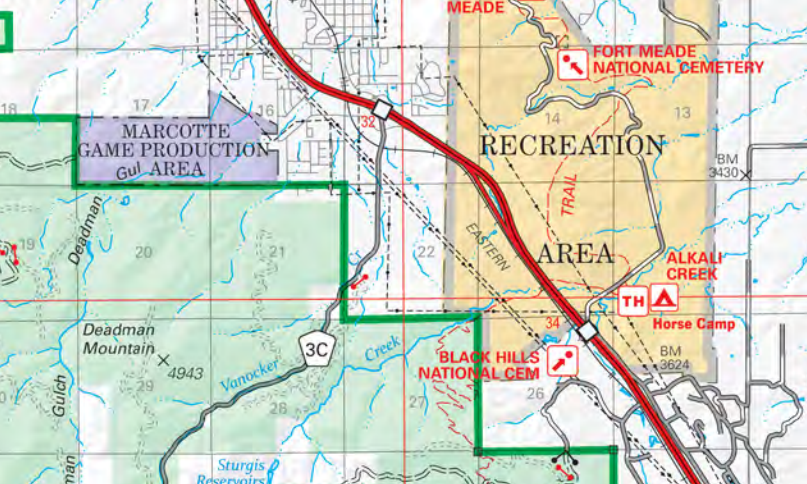
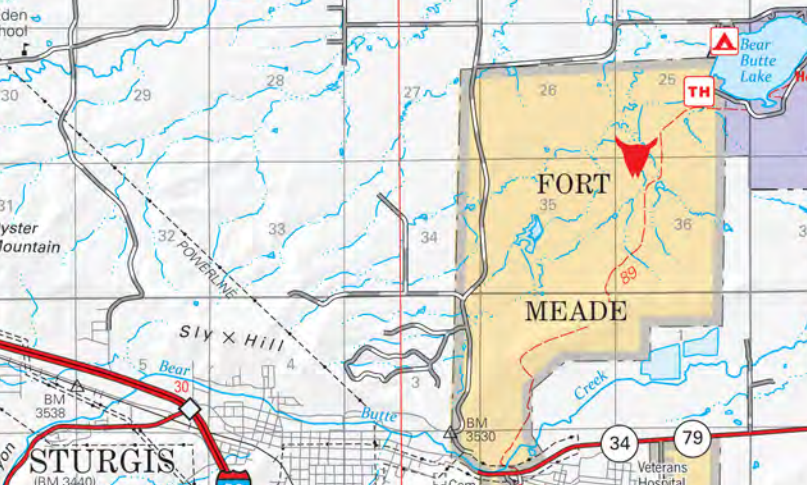
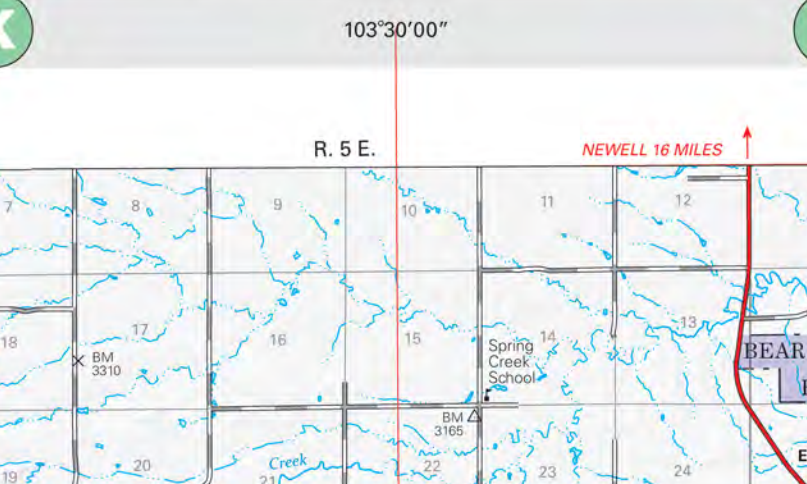
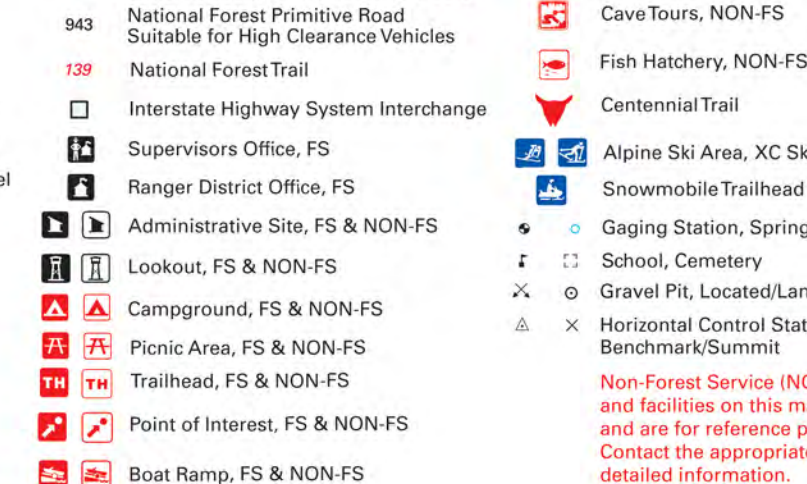
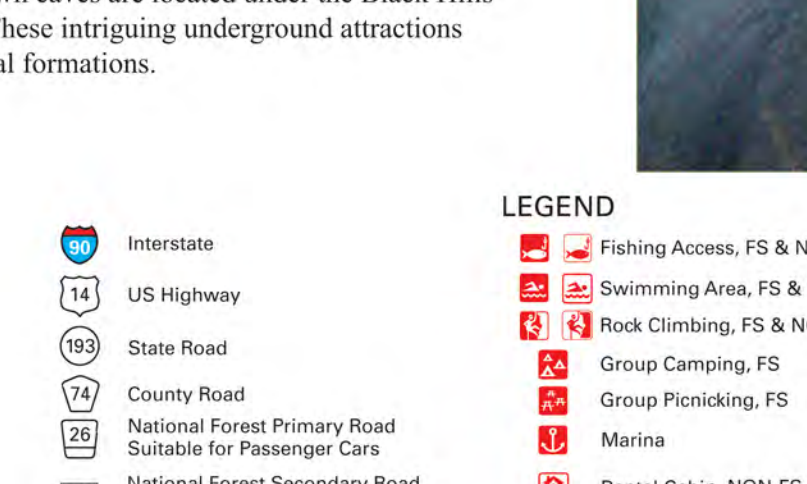
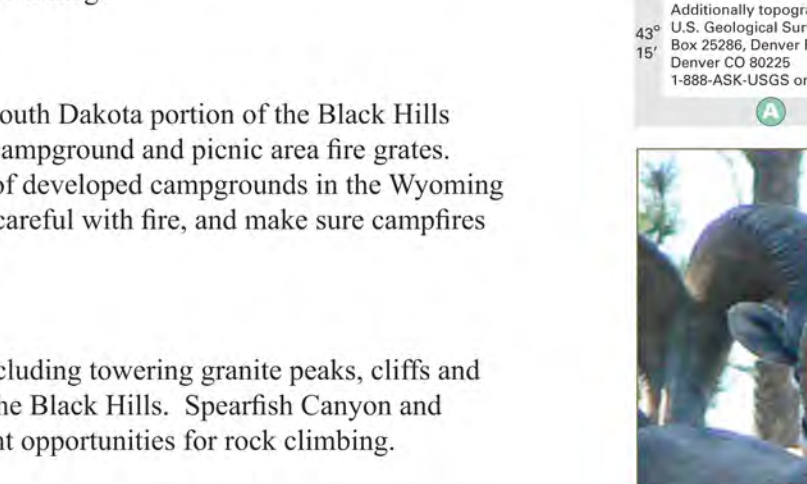
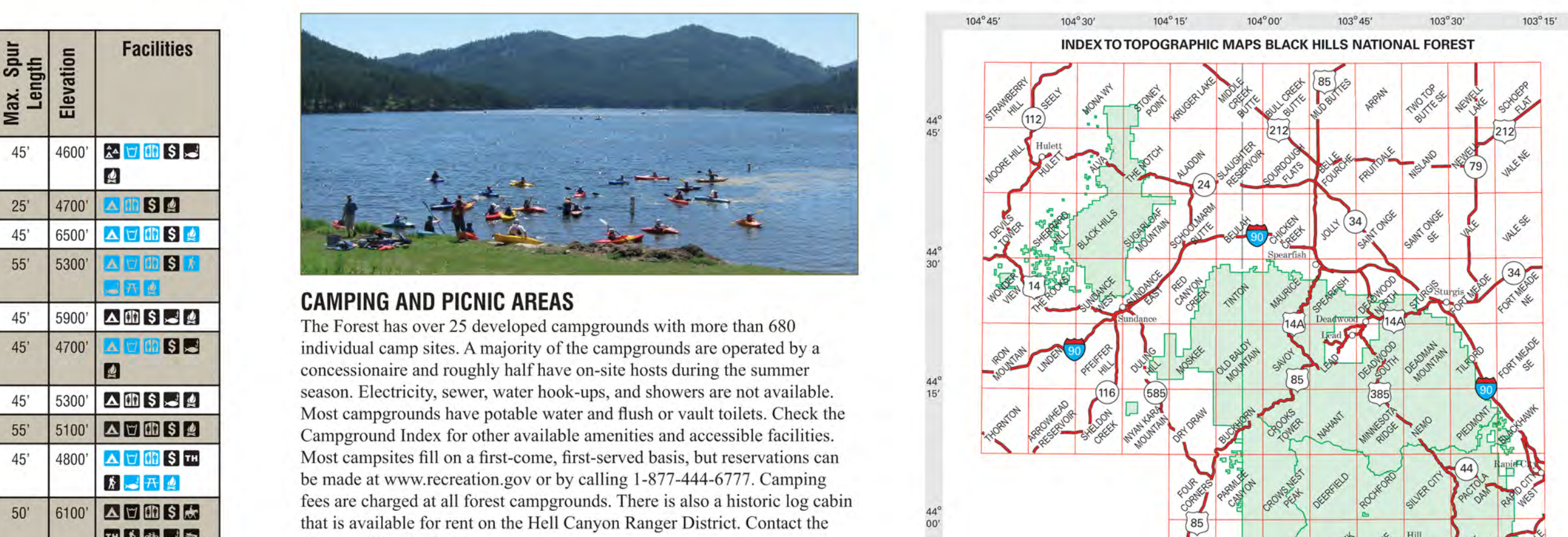
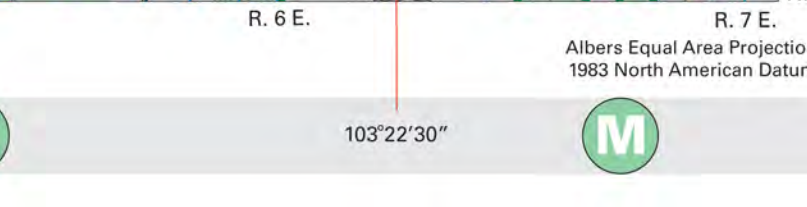
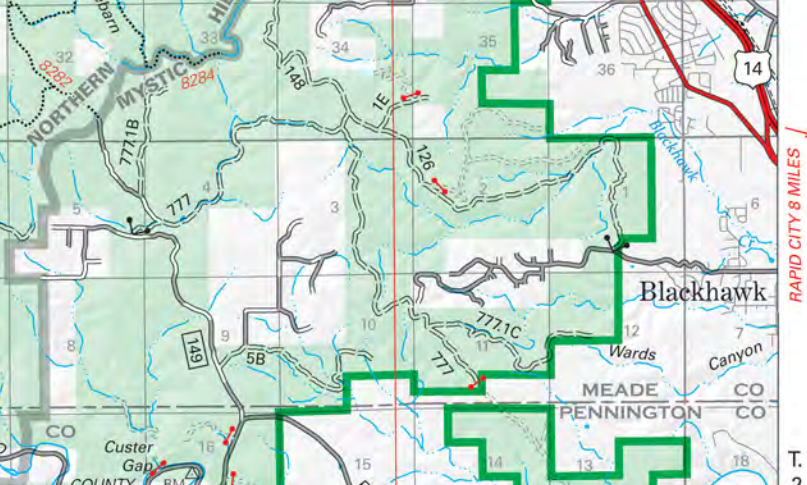
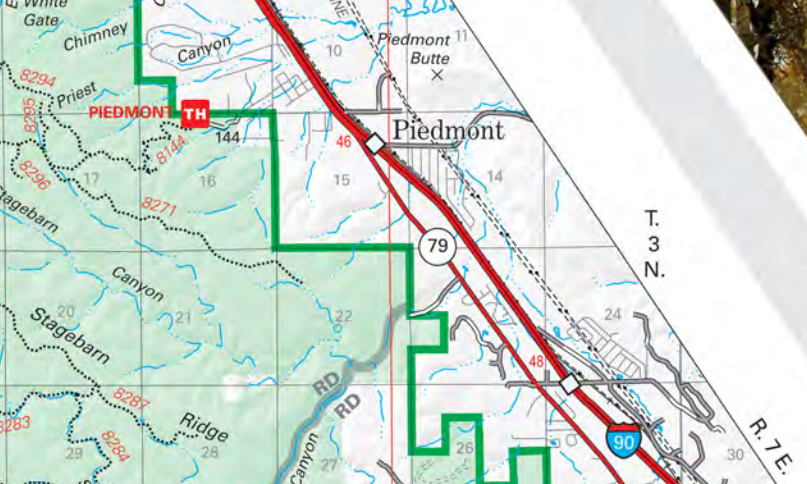
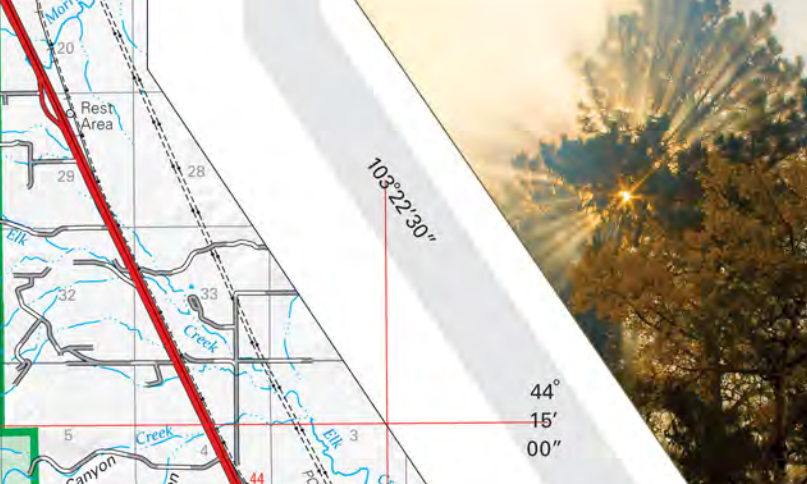
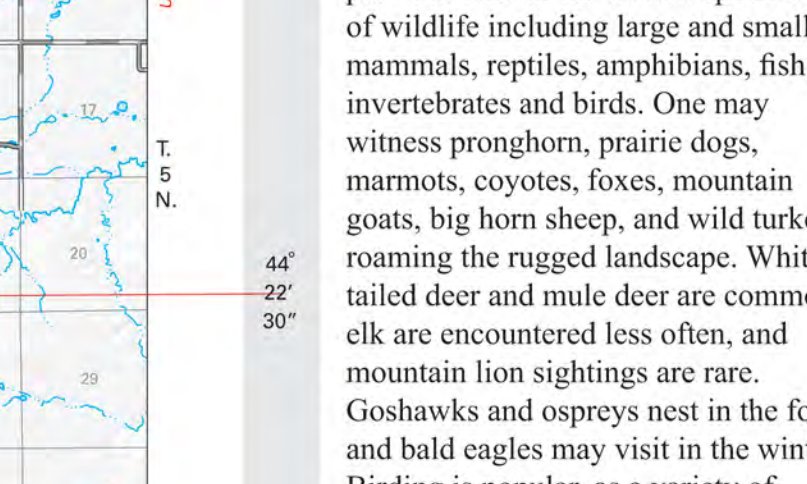
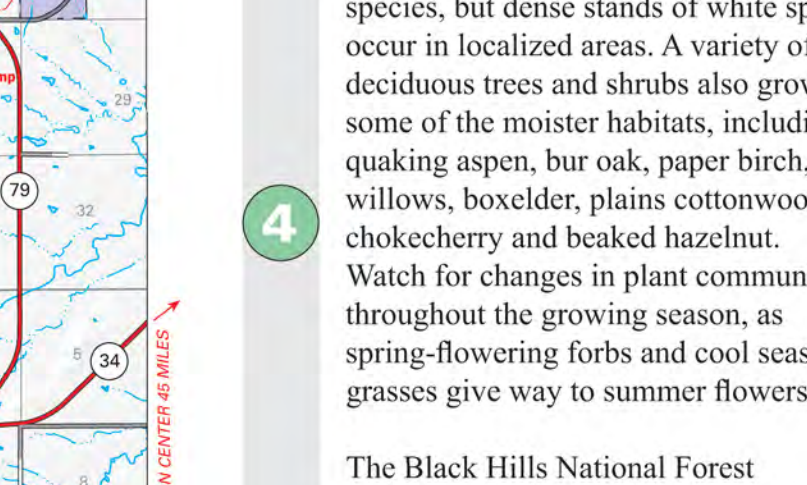
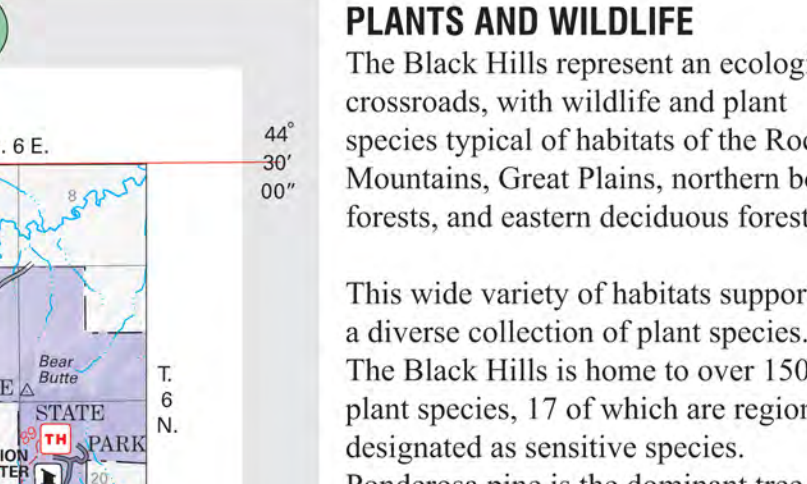
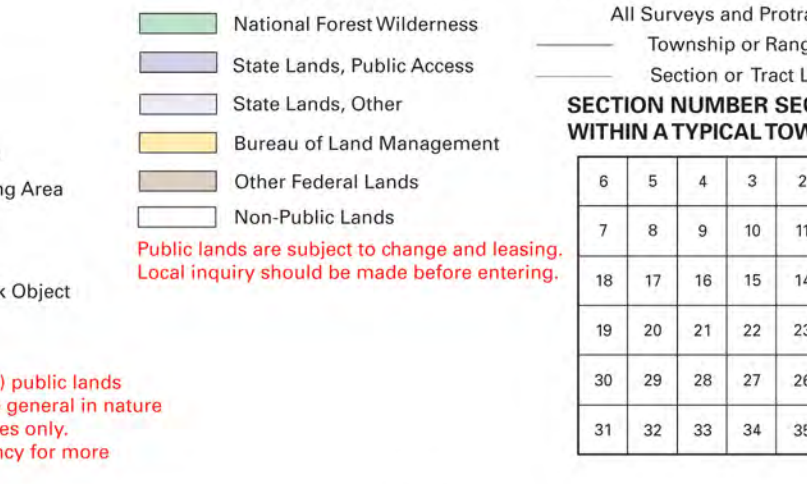
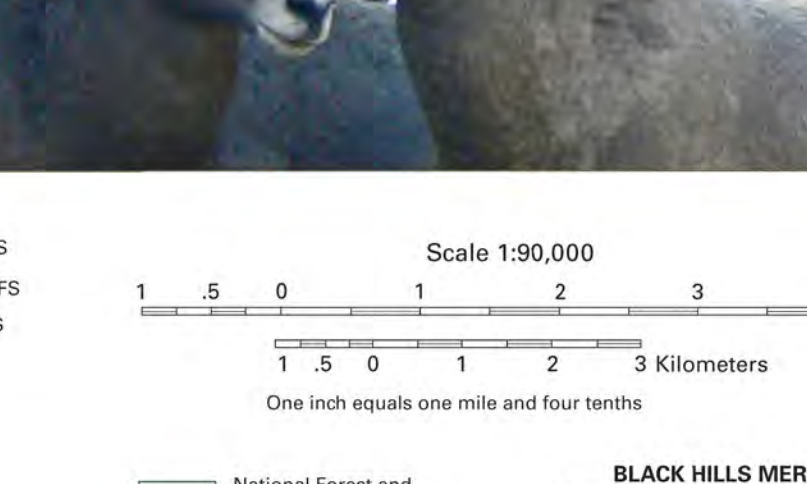
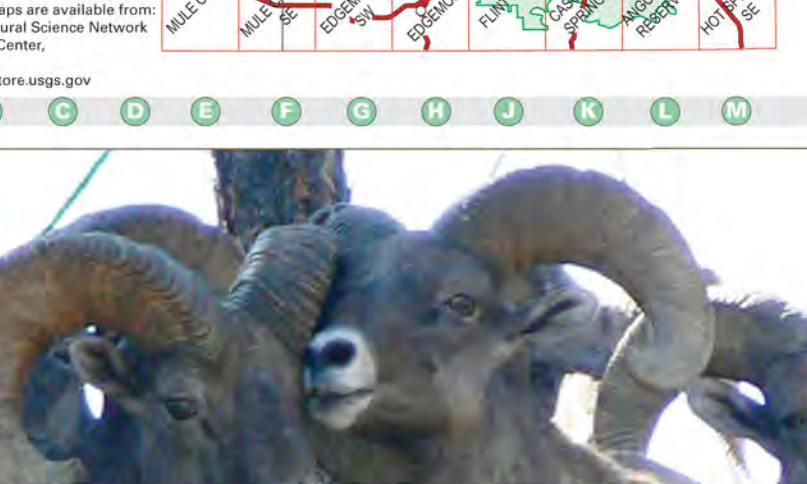


Table with 5 columns: Name of Site, Map Location, Picnic Sites, Elevation, Facilities. Lists sites like DAKOTA, HELL CANYON, HELL TOP, etc.

Table with 5 columns: Name of Site, Map Location, Picnic Sites, Elevation, Facilities. Lists sites like DAKOTA, HELL CANYON, HELL TOP, etc.



CAMPING AND PICNIC AREAS. The Forest has over 24 developed campgrounds with more than 680 individual camp sites. A majority of the campgrounds are operated by a concessionaire and roughly half have on-site hosts during the summer season.

DISPERSED CAMPING IS ALLOWED on most National Forest Lands for a maximum of 14 days in any 60-day period. Around developed campgrounds and campgrounds, dispersed camping is allowed only in designated areas.

PICNIC AREAS are available across the forest in a variety of settings. Many developed campgrounds have designated picnic areas within or adjacent to them.

CAMPFIRES. Campfires or open fires in the South Dakota portion of the Black Hills are allowed only in developed campground and picnic area fire grates.

GEOLGY. Spectacular land formations, including towering granite peaks, cliffs and spires dominate the skyline of the Black Hills.

PLANTS AND WILDLIFE. The Black Hills represent an ecological crossroads, with wildlife and plant species typical of habitats of the Rocky Mountains, Great Plains, northern boreal forests, and eastern deciduous forests.

TRAIL MAP PANEL BREAKDOWN. A detailed legend for the trail map panels, including symbols for National Forest Boundary, Wilderness Boundary, and various trail types.

LEGEND. A comprehensive legend for the map, detailing symbols for roads, trails, campgrounds, and other geographical features.

BLACK HILLS MIDDIAN TRAIL AND SECTION LINE CLASSIFICATION. A legend for the Black Hills Midian Trail and section line classification.

SECTION NUMBER GUIDE WITHIN A TOWNSHIP. A grid showing township and section numbers for navigation.

Scale 1:50,000. A scale bar showing distances in miles and kilometers.

Map title and publication information: Black Hills National Forest, 2015 Edition.