

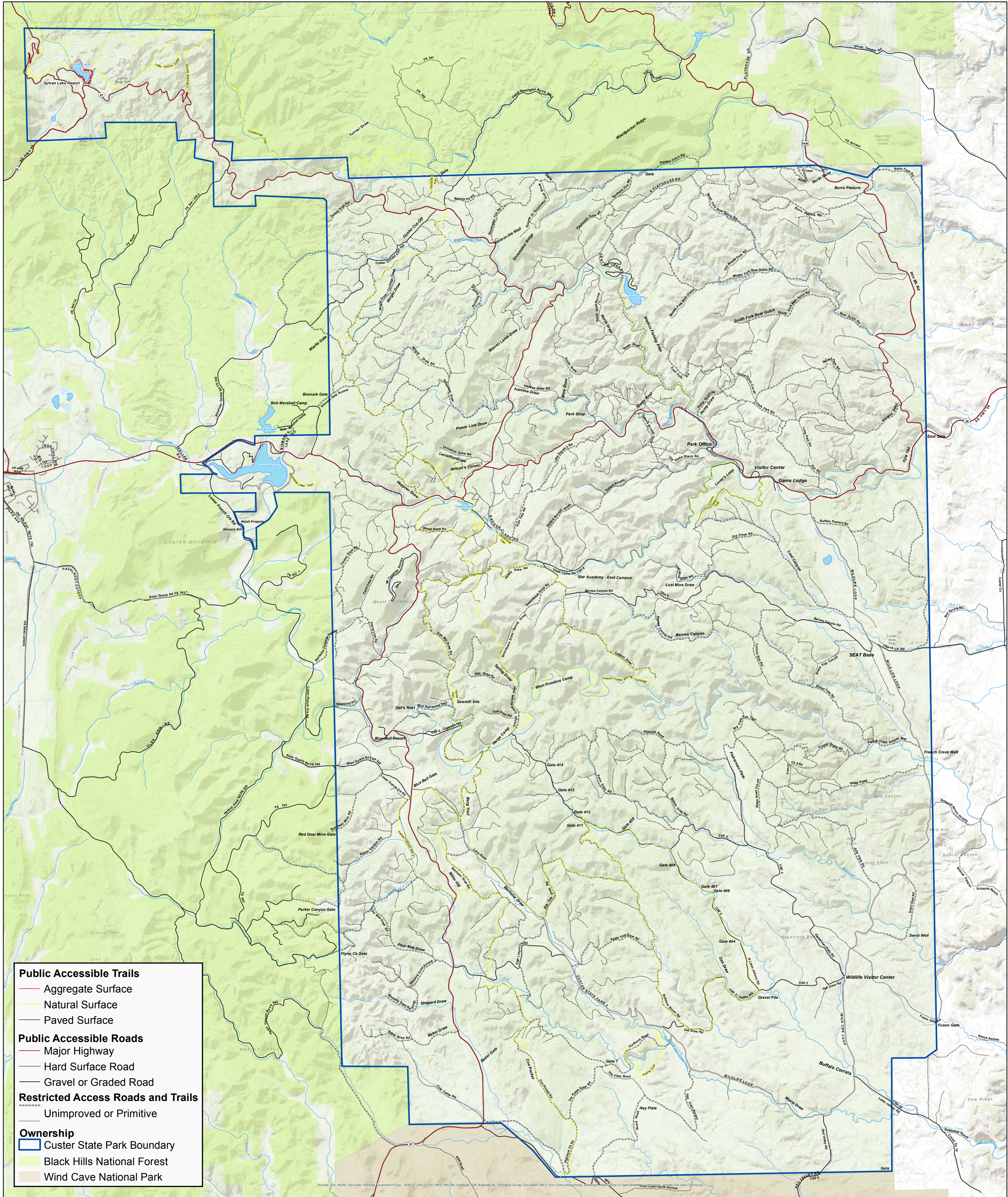


# Fire Access Map - Custer State Park

## FOR INTERNAL USE ONLY



**DISCLAIMER:** The roads and trails represented on this map are intended for use by individuals and staff performing duties for the State of South Dakota. The majority of these roads ARE NOT accessible to the public, and downloading of this map does not give permission to use these roads.



**Public Accessible Trails**

- Aggregate Surface
- Natural Surface
- Paved Surface

**Public Accessible Roads**

- Major Highway
- Hard Surface Road
- Gravel or Graded Road

**Restricted Access Roads and Trails**

- Unimproved or Primitive

**Ownership**

- Custer State Park Boundary
- Black Hills National Forest
- Wind Cave National Park

Source: ESRI, HERE, DeLorme, International P Corp, GEBCO, IGN, FAO, NPS, NRCAN, GeoBasis, IGN, Kadaster NL, Ordnance Survey, Esri/Jacar, METI, Esri China (Hong Kong), SwireInfo, Mapbox, © OpenStreetMap contributors, Swire, © GIS User Community