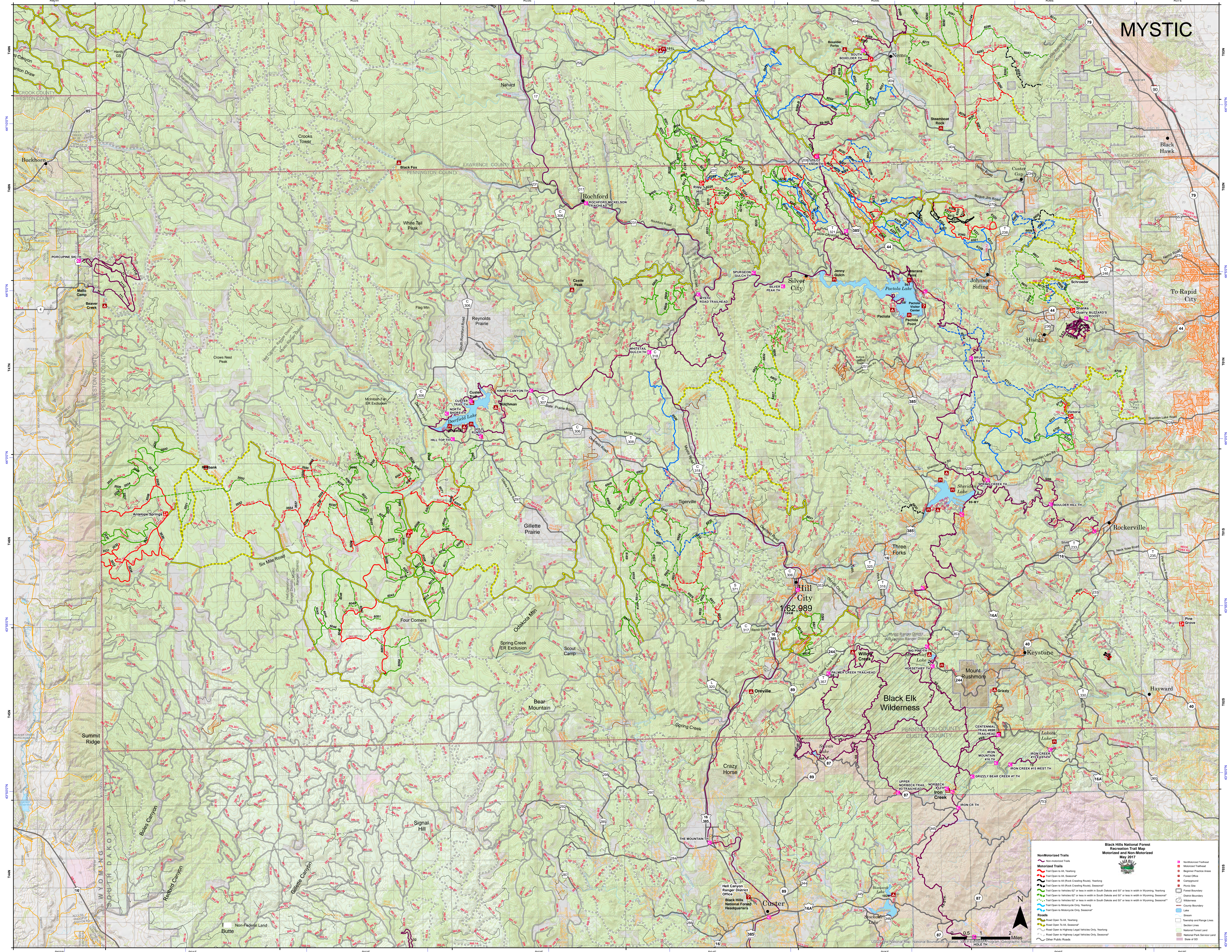


MYSTIC



Black Hills National Forest Recreation Trail Map Motorized and Non-Motorized
May 2017

Non-Motorized Trails

- Non-Motorized Trails
- Motorized Trails
- Trail Open to All Yearlong
- Trail Open to All Season*
- Trail Open to All Snow-Clearing Roads, Yearlong
- Trail Open to All Snow-Clearing Roads, Season*
- Trail Open to Vehicles 62" or less in width in South Dakota and 50" or less in width in Wyoming, Yearlong
- Trail Open to Vehicles 62" or less in width in South Dakota and 50" or less in width in Wyoming, Season*
- Trail Open to Vehicles 62" or less in width in South Dakota and 50" or less in width in Wyoming, Season*
- Trail Open to Motorcycles Only, Yearlong
- Trail Open to Motorcycles Only, Season*

Motorized and Non-Motorized

- Trail Open to All Yearlong
- Trail Open to All Season*
- Trail Open to Heavy Legal Vehicles Only, Yearlong
- Trail Open to Heavy Legal Vehicles Only, Season*
- Trail Open to Highways Legal Vehicles Only, Season*
- Other Public Roads

Other Symbols:

- Trailhead
- Trailhead
- Designated Practice Area
- Forest Office
- Campground
- Private Land
- Forest Boundary
- District Boundary
- Wilderness
- County Boundary
- State Boundary
- Section Lines
- Section Lines
- National Forest Land
- National Park Service Land
- State of SD

Scale: 0 0.5 1 2 Miles

Map showing the Black Hills National Forest Recreation Trail Map, including motorized and non-motorized trails. The map covers the area around Hill City, Silver City, and Custer, South Dakota. Key locations include Hill City (62,989), Silver City, Custer, and various trailheads and landmarks. The map includes a grid of latitude and longitude coordinates, a scale bar, and a legend in the bottom right corner.