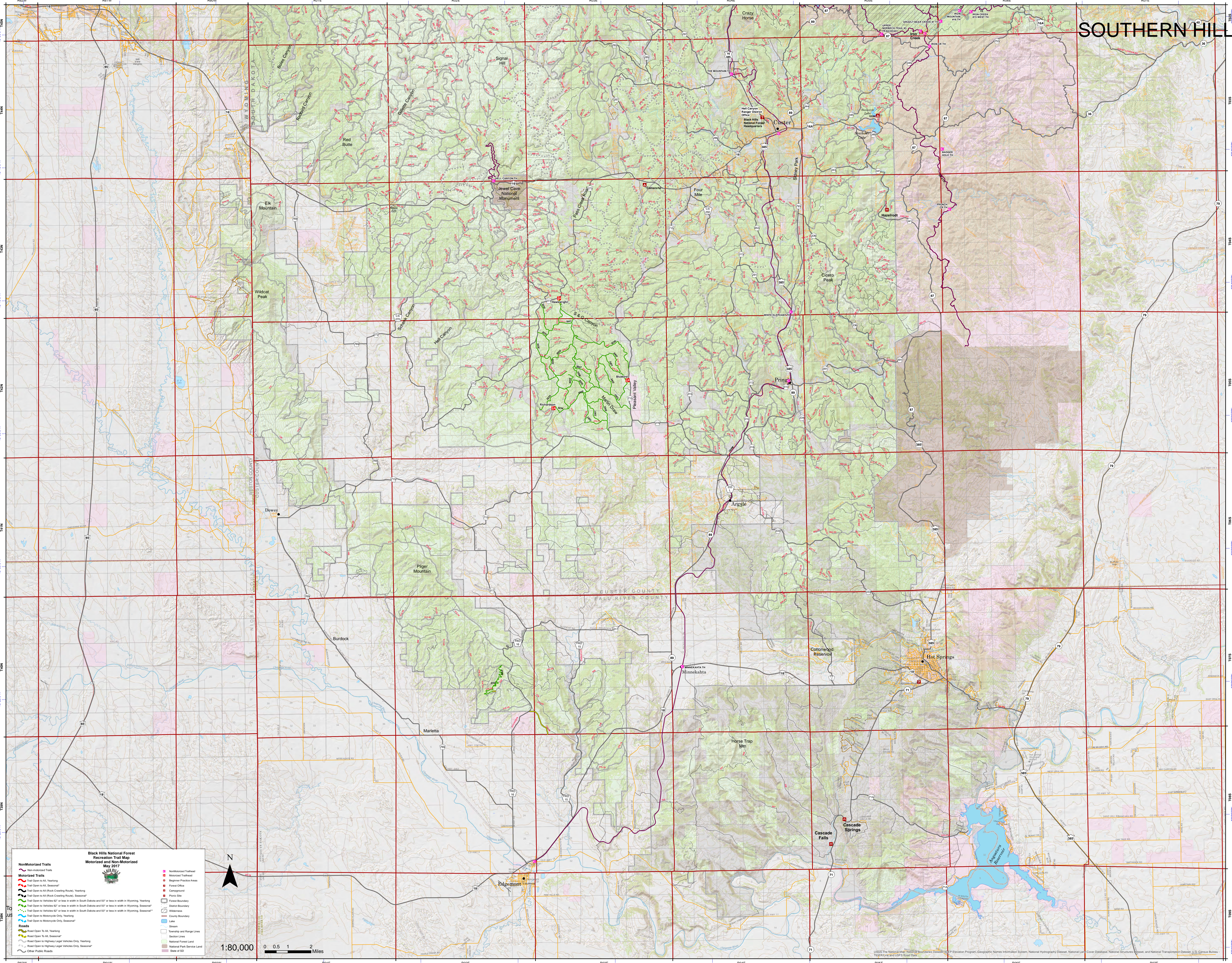


# SOUTHERN HILLS



**Black Hills National Forest  
Recreation Trail Map  
Motorized and Non-Motorized  
May 2017**

**Non-Motorized Trails**

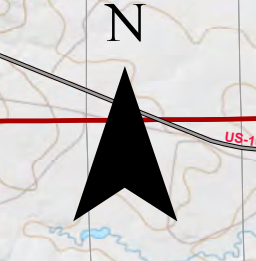
- Trail Open to All, Yearlong
- Trail Open to All, Seasonal
- Trail Open to All (Black-Crossing Routes), Yearlong
- Trail Open to All (Black-Crossing Routes), Seasonal
- Trail Open to Vehicles 62" or less in width in South Dakota and 50" or less in width in Wyoming, Yearlong
- Trail Open to Vehicles 62" or less in width in South Dakota and 50" or less in width in Wyoming, Seasonal
- Trail Open to Vehicles 62" or less in width in South Dakota and 50" or less in width in Wyoming, Seasonal\*
- Trail Open to Motorcycle Only, Yearlong
- Trail Open to Motorcycle Only, Seasonal\*

**Roads**

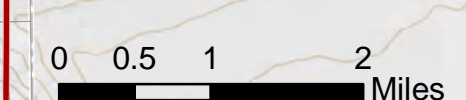
- Road Open to All, Yearlong
- Road Open to All, Seasonal
- Road Open to Highway Legal Vehicles Only, Yearlong
- Road Open to Highway Legal Vehicles Only, Seasonal\*
- Other Public Roads

**Other Features**

- Non-Motorized Trailhead
- Motorized Trailhead
- Beginner Practice Areas
- Forest Office
- Campground
- Picnic Site
- Forest Boundary
- District Boundary
- Interagency
- County Boundary
- Stream
- Township and Range Lines
- Section Lines
- National Forest Land
- National Park Service Land
- State of SD



1:80,000



USGS The National Map, National Geographic Society, National Hydrography Dataset, National Land Cover Database, National Structures Dataset, and National Transportation Dataset, U.S. Census Bureau, 2016 Integrated Land Use Database