



USDA Forest Service
Nebraska National Forests & Grasslands
Fort Pierre Ranger District



Water Source



Drop Point



Mow Line

State Highways
and Main Roads

Local Public
Road

USFS Road

Burn Unit

Pasture/Fence

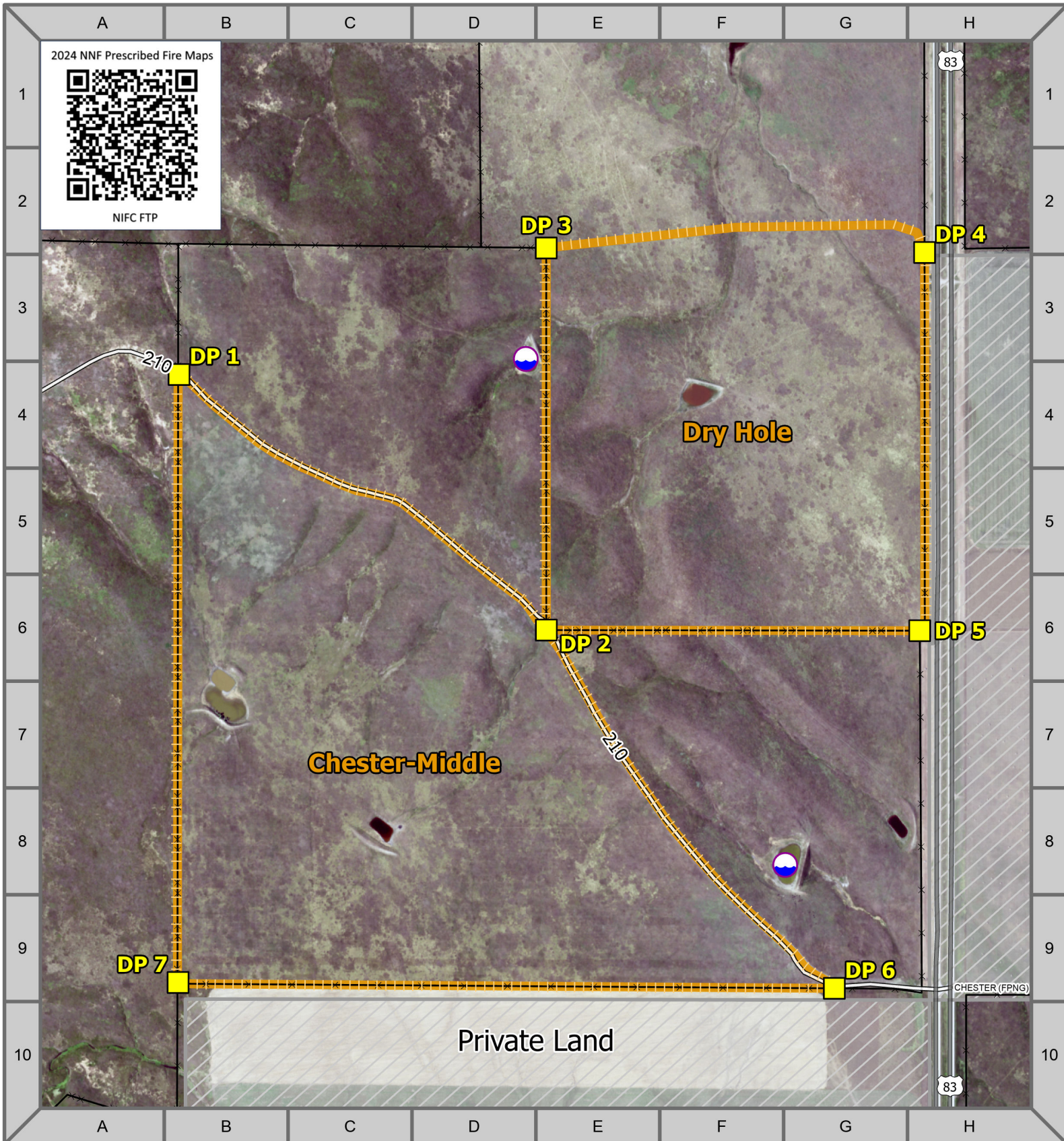
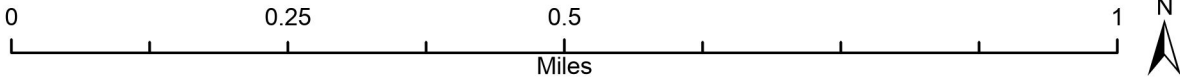
NON-FS Land

Chester-Middle & Dry Hole

Burn Units 2024

Chester-Middle: 258 Acres

Dry Hole: 173 Acres



2024 NNF Prescribed Fire Maps



NIFC FTP